

RED ROCK MEADOWS SUBDIVISION

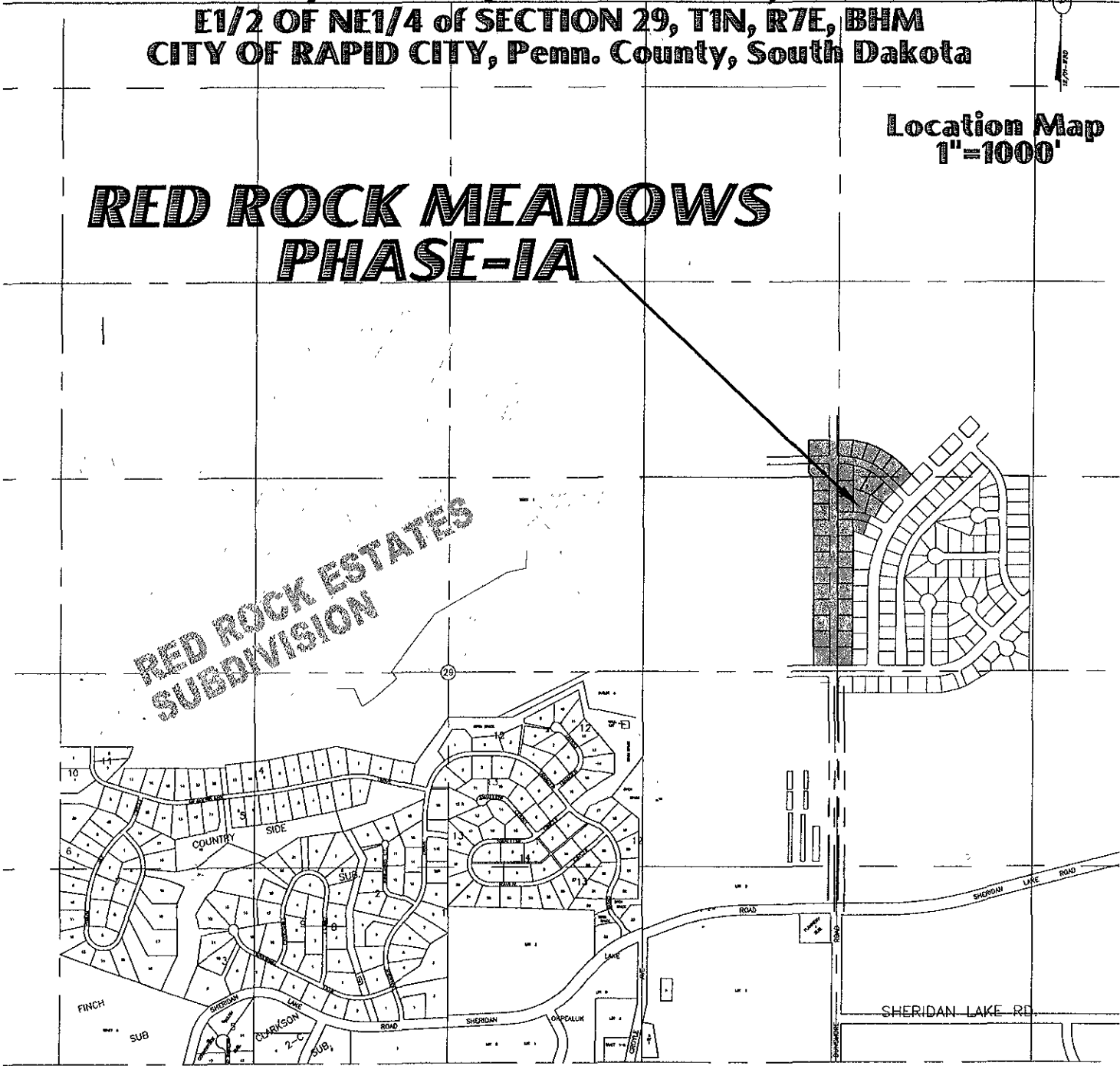
W1/2 OF NW1/4 of SECTION 28, AND
E1/2 OF NE1/4 of SECTION 29, T1N, R7E, BHM
CITY OF RAPID CITY, Penn. County, South Dakota



Location Map
1"=1000'

RED ROCK MEADOWS PHASE-1A

RED ROCK ESTATES
SUBDIVISION



RECEIVED

MAY 27 2005

Rapid City Growth
Management Department