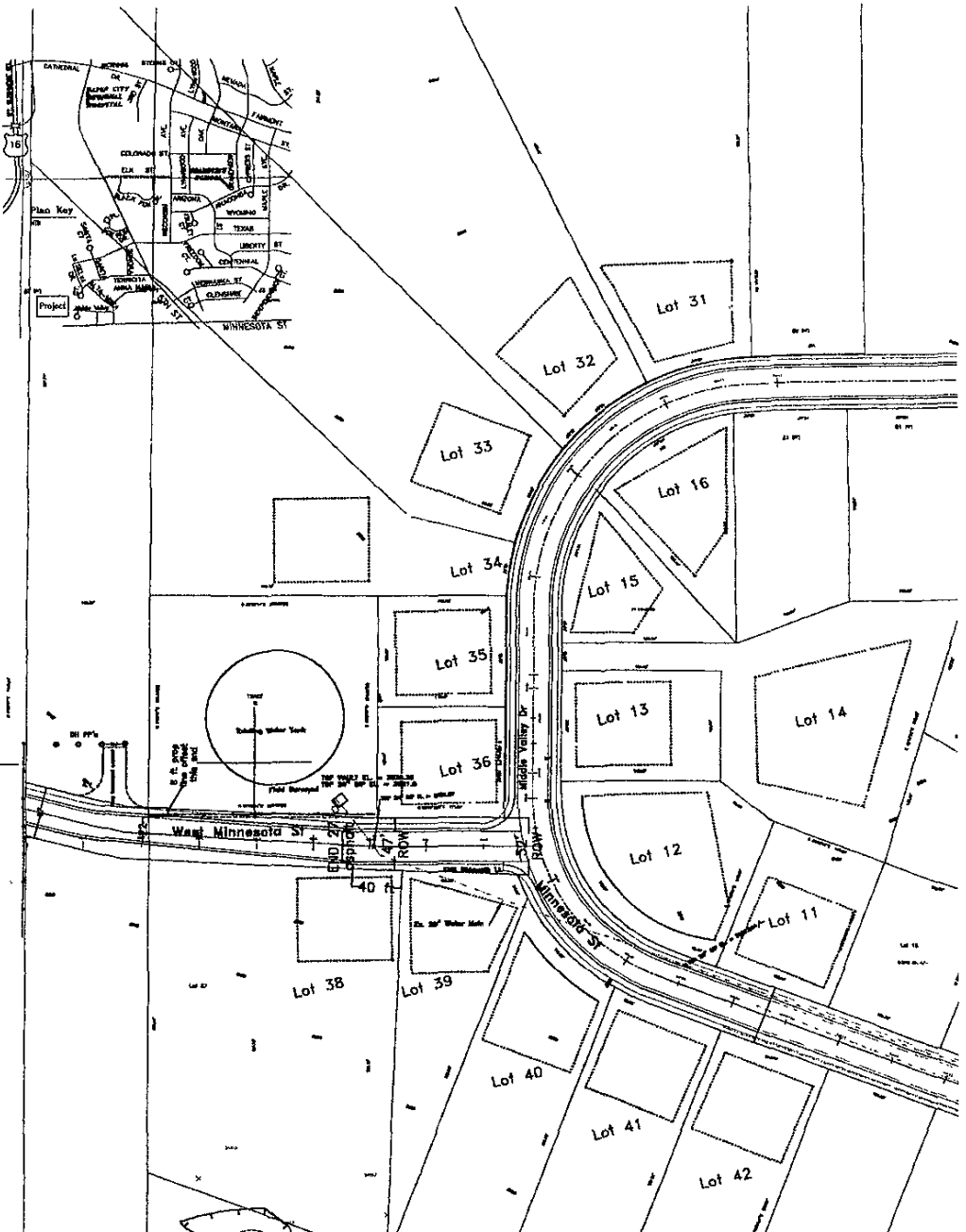





636,000 N



Minnesota Ridge Heights Subdivision - Planned Residential Criteria: Phase 4 C
 3T's LLC PO Box 2824 Rapid City, SD 57709

Setbacks: Front: 18' to Garage; 15' to Structure Side: 8' Rear: 25'
 Landscape: Conventional shrubs, trees and plants for residential lots.
 Lighting: Entry way, low wattage yard light & standard street lights.
 Exteriors: Stone, brick, wood, driveway and siding: earth-tone colors.

	CENTERLINE	project no. : 03984CPRD
	731 St. Joe Street, Suite 120, Rapid City, SD 57701	date: 9-24-04
	Phone: (605) 341-3193 Fax: (605) 341-3358	file: 0398
	centrlme@aol.com	sheet: 1