

04VE017

LEGAL DESCRIPTION: TRACT 1 - (FORMERLY LOTS C, D & E,
LESS THE NW 47' OF LOT E) OF LOT 3 OF DOW TRACT
ALL LOCATED IN SW1/4 NW1/4 OF SECTION 2, T1N, R7E, BHM,
RAPID CITY, PENNINGTON COUNTY, SOUTH DAKOTA

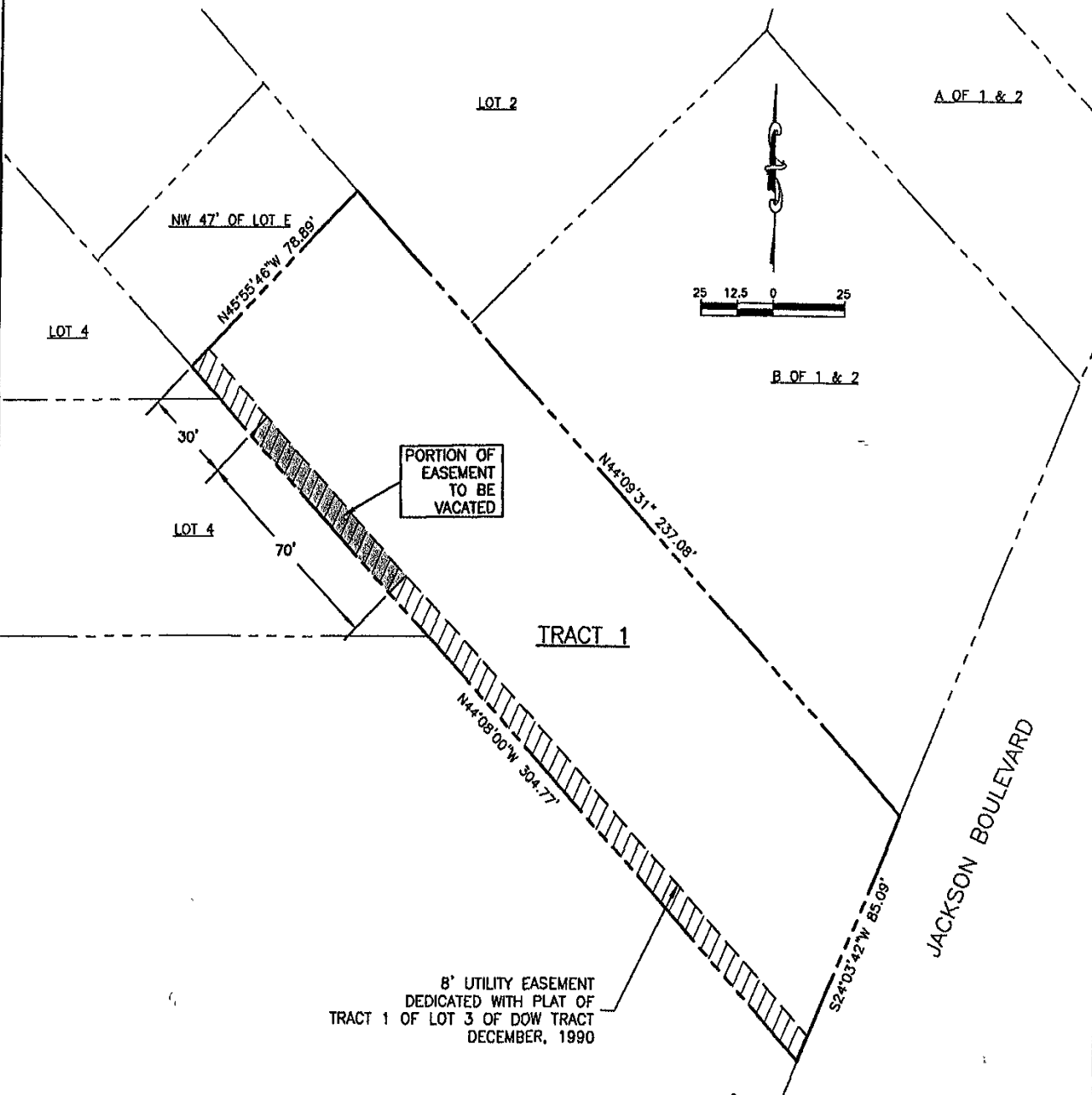


EXHIBIT A
VACATION OF EASEMENT
TRACT 1 OF LOT 3 OF DOW TRACT

Ferber Engineering Company, Inc.
 Civil Engineering • Water Resources • Transportation • Land Surveying
 728 East Victoriana, Rapid City, SD 57701 • Phone: (605) 343-8114

PROJECT NO. JO4-116
FIGURE NO. 1