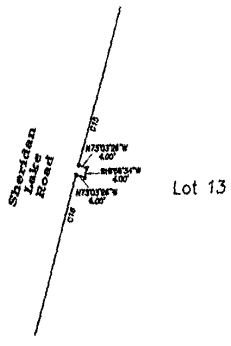


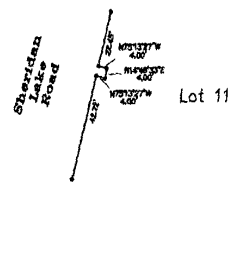
**Plat of Lots 1 through 16 inclusive and Drainage Lot A of Block 10 of Fairway Hills P.R.D. and Dedicated R.O.W.** 04SV016

Formerly all of Lot 3, all of Lot DE1 of Lot 3A and a portion of Lot 3A of Fairway Hills P.R.D., and a Portion of the unplatted portion of the NW1/4 SW1/4 of Section 15, T1N, R7E, BHM of Fairway Hills P.R.D.  
 All located in the SW1/4 of Section 15, T1N, R7E, BHM, Rapid City, Pennington County, South Dakota

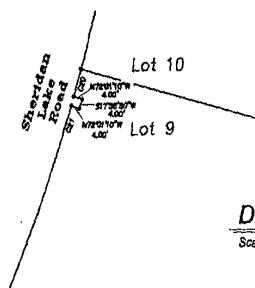
Prepared by:  
 Pink Lead Surveying &  
 Consulting Engineers, Inc.  
 P.O. Box 8124  
 Rapid City, South Dakota 57109  
 605-348-1538  
 Project # 03-07-02



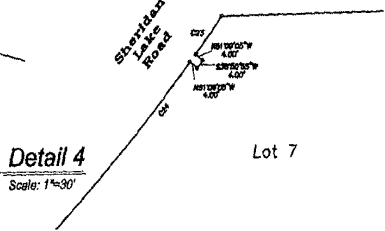
**Detail 1**  
 Scale: 1"=30'



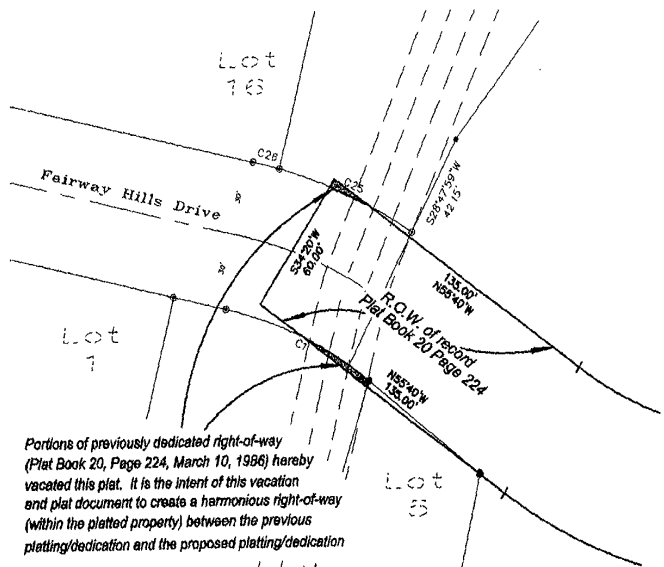
**Detail 2**  
 Scale: 1"=30'



**Detail 3**  
 Scale: 1"=30'



**Detail 4**  
 Scale: 1"=90'



Portions of previously dedicated right-of-way (Plat Book 20, Page 224, March 10, 1986) hereby vacated this plat. It is the intent of this vacation and plat document to create a harmonious right-of-way (within the platted property) between the previous platting/dedication and the proposed platting/dedication

**Detail 5**  
 Scale: 1"=30'