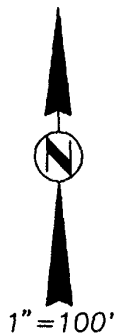


EXHIBIT B

BOUNDARY OF LOTS 7 THRU 10, BLOCK 14
AND OUT LOT LS
IN THE UNPLATTED PORTION OF W $\frac{1}{2}$ NW $\frac{1}{4}$ NE $\frac{1}{4}$
SECTION 29, T1N, R7E, BHM
RAPID CITY, PENNINGTON COUNTY, SOUTH DAKOTA

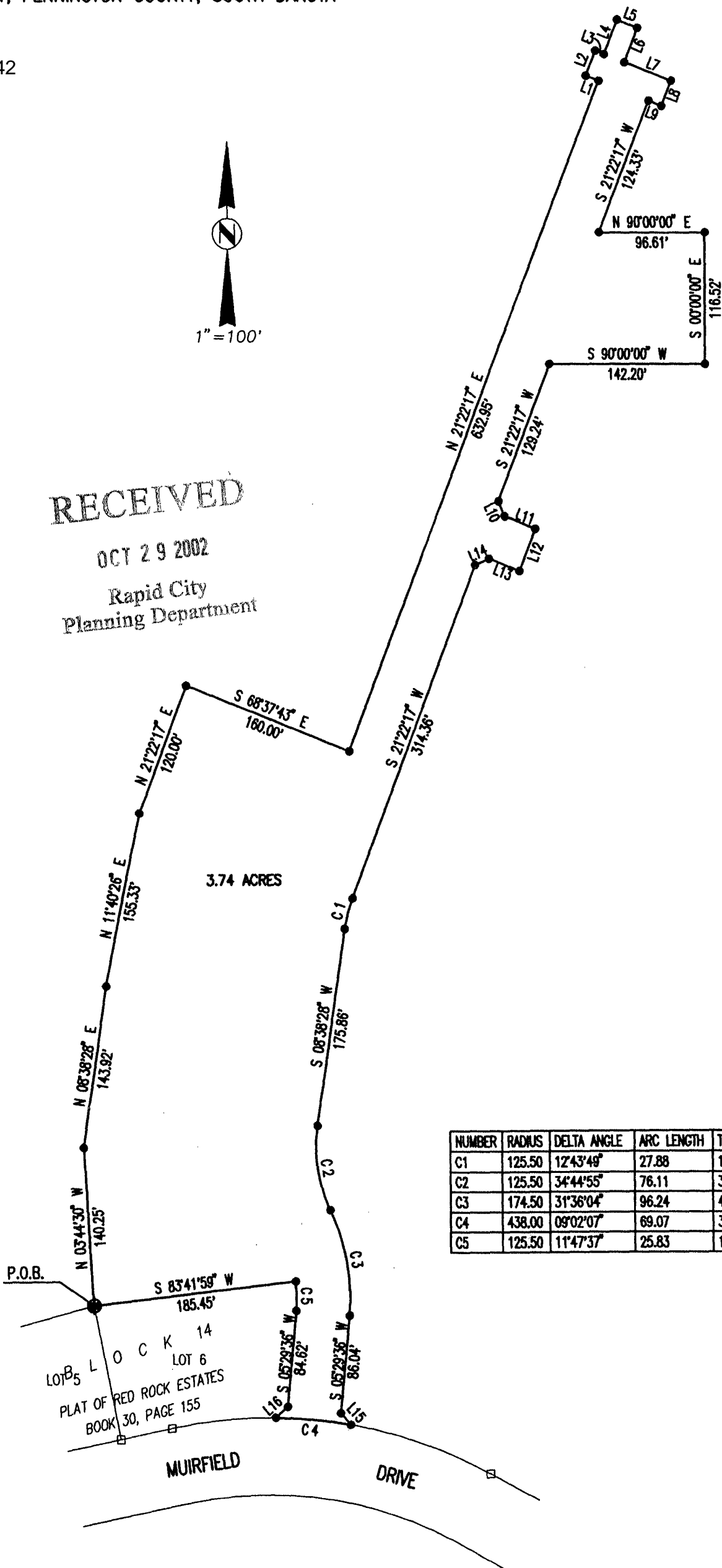
02SV042



RECEIVED

OCT 29 2002

Rapid City
Planning Department



NUMBER	DIRECTION	DISTANCE
L1	N 68°45'17" W	12.50'
L2	N 21°22'17" E	24.00'
L3	S 68°45'17" E	8.37'
L4	N 21°22'31" E	32.50'
L5	S 68°45'17" E	20.00'
L6	S 21°22'31" W	32.50'
L7	S 68°45'17" E	45.83'
L8	S 21°22'17" W	24.00'
L9	N 68°45'17" W	12.50'
L10	S 23°37'43" E	14.14'
L11	S 68°37'43" E	30.17'
L12	S 21°22'17" W	40.00'
L13	N 68°37'43" W	30.17'
L14	S 66°22'17" W	14.14'
L15	S 41°39'56" E	13.64'
L16	N 48°34'56" E	14.64'

NUMBER	RADIUS	DELTA ANGLE	ARC LENGTH	TANGENT	CHORD DIRECTION	CHORD LENGTH
C1	125.50	12°43'49"	27.88	14.00	S 15°00'22" W	27.83
C2	125.50	34°44'55"	76.11	39.27	S 08°44'00" E	74.95
C3	174.50	31°36'04"	96.24	49.38	S 10°18'26" E	95.03
C4	438.00	09°02'07"	69.07	34.61	N 84°30'24" W	69.00
C5	125.50	11°47'37"	25.83	12.96	N 00°24'12" W	25.79

P.O.B.
S 83°41'59" W 185.45'
LOT 5
LOT 6
PLAT OF RED ROCK ESTATES
BOOK 30, PAGE 155

MUIRFIELD DRIVE