

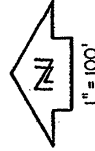
PLAT OF LOTS 1 THROUGH 7 OF VISTA LAKE SUBDIVISION

FORMERLY ALL OF LOT 1 AND A PORTION OF LOT F-1 OF FISH HATCHERY SUBDIVISION,
 LOCATED IN THE NE1/4 SE1/4 AND N1/2 SE1/4 OF SECTION 8, T1N, R7E, BHM, RAPID CITY, PENNINGTON COUNTY,
 SOUTH DAKOTA
 PAGE 1 OF 2

PREPARED BY:
 Fisk Land Surveying & Consulting Engineers, Inc
 P.O. Box 8154
 Rapid City, SD 57709
 (605) 348-1538
 October 12, 2001

Project No: 01-01-02

TRACT A

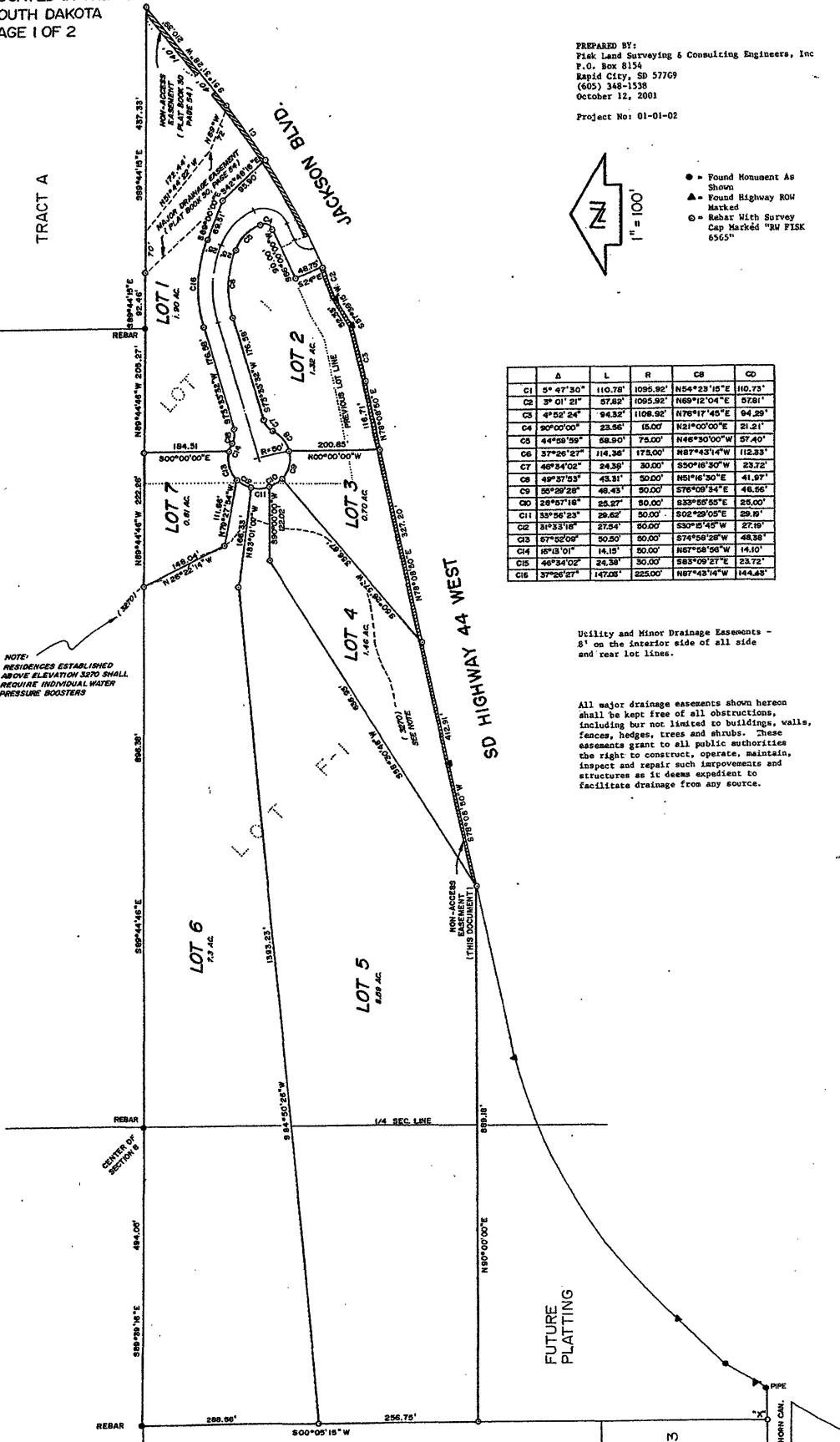


- = Found Monument As Shown
- ▲ = Found Highway ROW Marked
- = Subst With Survey Cap Marked "BW FISK 6565"

	A	L	R	CB	CD
C1	5° 47' 30"	110.78'	1086.92'	N54°23'15"E	110.73'
C2	3° 01' 21"	57.82'	1095.92'	N69°12'04"E	57.81'
C3	4° 02' 24"	94.32'	1108.92'	N76°17'45"E	94.29'
C4	90°00'00"	23.56'	15.00'	N21°00'00"E	21.21'
C5	44°08'59"	58.90'	75.00'	N46°30'00"W	57.40'
C6	37°26'21"	114.36'	175.00'	N87°43'14"W	112.33'
C7	46°54'02"	24.39'	30.00'	S50°16'30"W	23.72'
C8	49°37'53"	43.31'	50.00'	N51°16'30"E	41.97'
C9	50°29'28"	48.43'	50.00'	S76°09'34"E	48.56'
C10	28°57'18"	25.27'	50.00'	S33°55'55"E	25.00'
C11	33°56'23"	26.62'	50.00'	S02°29'05"E	26.19'
C12	21°33'18"	27.54'	50.00'	S30°14'10"W	27.16'
C13	57°52'02"	30.50'	30.00'	S74°59'28"W	48.38'
C14	15°12'10"	14.15'	50.00'	N67°58'56"W	14.10'
C15	46°54'02"	24.38'	30.00'	S83°09'27"E	23.72'
C16	37°26'27"	147.02'	225.00'	N87°43'14"W	144.43'

Utility and Minor Drainage Easements - 8' on the interior side of all side and rear lot lines.

All major drainage easements shown hereon shall be kept free of all obstructions, including but not limited to buildings, walls, fences, hedges, trees and shrubs. These easements grant to all public authorities the right to construct, operate, maintain, inspect and repair such improvements and structures as it deems expedient to facilitate drainage from any source.



NOTE: RESIDENCES ESTABLISHED ABOVE ELEVATION 3270 SHALL REQUIRE INDIVIDUAL WATER PRESSURE BOOSTERS

SD HIGHWAY 44 WEST

FUTURE PLATTING

ANGLE IRON ANGLE IRON

PIPE CLEVERING CHAIN