

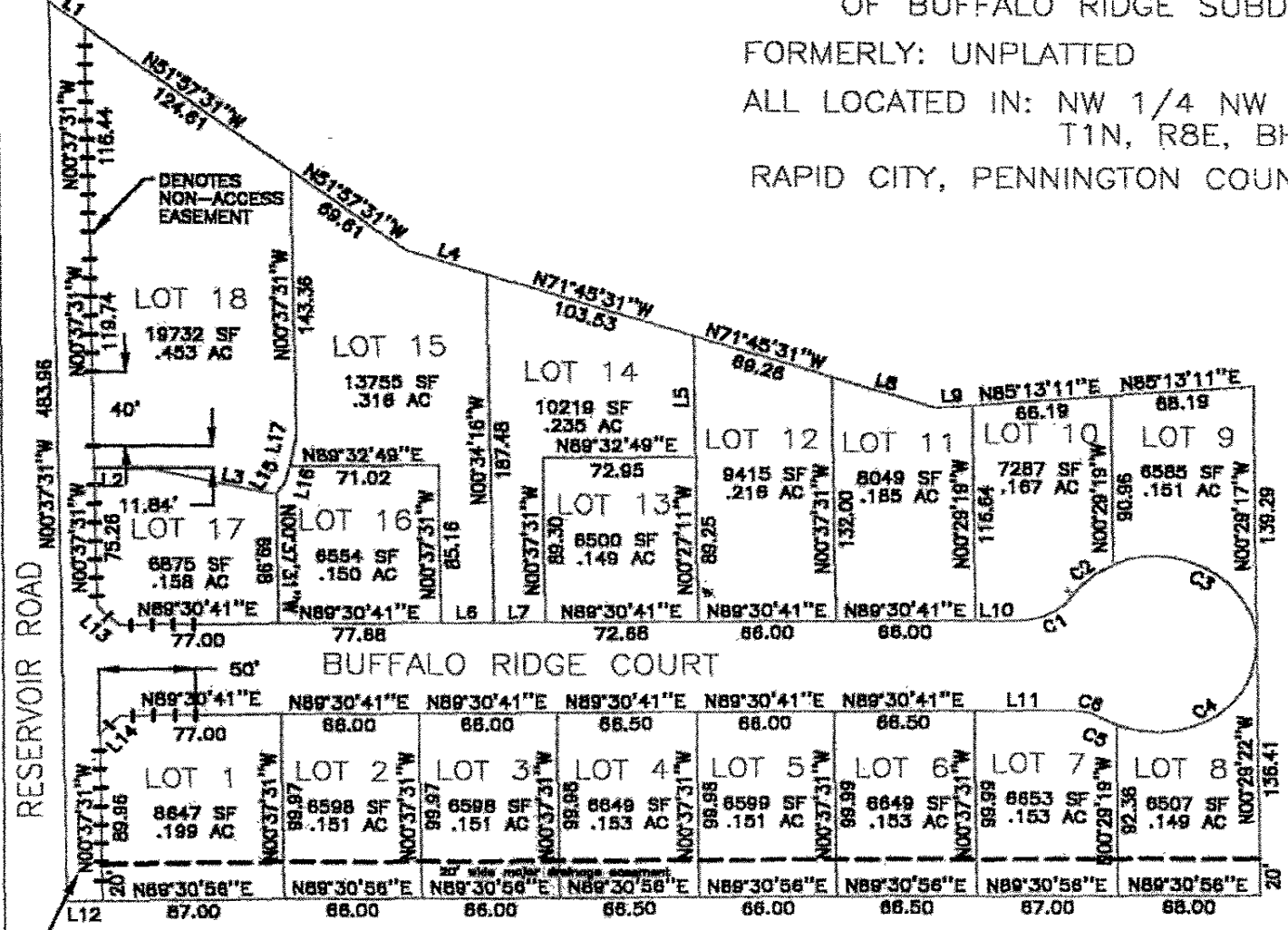
01SV025

PLAT OF LOTS 1 THRU 18
OF BUFFALO RIDGE SUBDIVISION

FORMERLY: UNPLATTED

ALL LOCATED IN: NW 1/4 NW 1/4 OF SECTION 11,
T1N, R8E, BHM

RAPID CITY, PENNINGTON COUNTY, SOUTH DAKOTA



BEARING TABLE

NUMBER	DIRECTION	DISTANCE
L1	N51°57'31"W	21.77
L2	N89°32'49"E	22.54
L3	N77°10'25"W	88.27
L4	N71°45'31"W	40.37
L5	N77°10'25"W	84.99
L6	N89°30'41"E	25.00
L7	N89°30'41"E	25.00
L8	N71°45'31"W	51.85
L9	N85°13'11"E	17.28
L10	N89°30'41"E	20.92
L11	N89°30'41"E	45.67
L12	N89°30'58"E	17.00
L13	N45°33'25"W	14.18
L14	N44°28'35"E	14.13
L15	N32°58'20"E	8.52
L16	N12°49'35"E	8.33
L17	N12°49'35"E	15.87