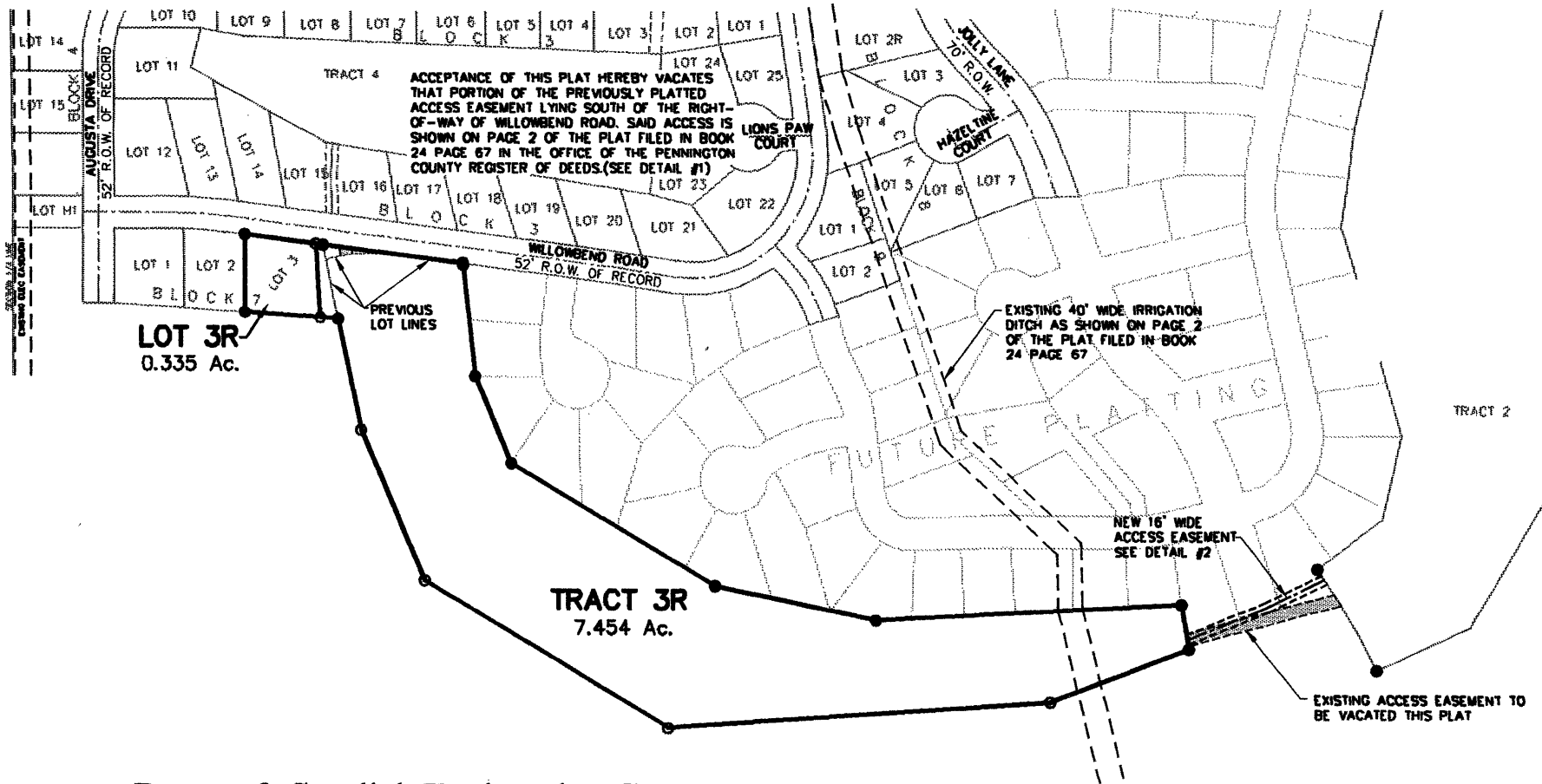


00PL132

# PLAT OF LOT 3R OF BLOCK 7 OF ELKS COUNTRY ESTATES AND TRACT 3R OF THE E1/2 OF SECTION 16

(Lot 3R of Block 7: formerly a portion of Lot 3 of Block 7 of Elks Country Estates and Tract 3R: formerly a portion of Lot 3 of Block 7 of Elks Country Estates and Tract 3 and a portion of Tract 1 of the E1/2 of Section 16)

LOCATED IN THE E1/2  
SECTION 16, T1N, R8E, BHM  
RAPID CITY, PENNINGTON COUNTY, SOUTH DAKOTA



Renner & Sperlich Engineering Co.

616 Sixth St. • Rapid City, SD 57701 • 605/342-1191  
FAX: 605/342-1405 • E-MAIL: RSEC@RAPIDNET.COM