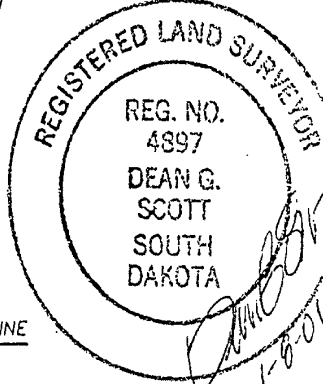
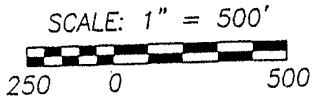


LAYOUT PLAT OF

TRACT 2 REVISED, TRACT 3, TRACT 4, AND TRACT 5 OF BRENNAN HILL SUBDIVISION,
 FORMERLY TRACT 2 OF BRENNAN HILL SUBDIVISION AND THE E1/2 SW1/4 OF SECTION 3,
 TOWNSHIP 1 SOUTH, RANGE 8 EAST OF THE BLACK HILLS MERIDIAN,
 PENNINGTON COUNTY, SOUTH DAKOTA.

JANUARY, 2001



LEGEND

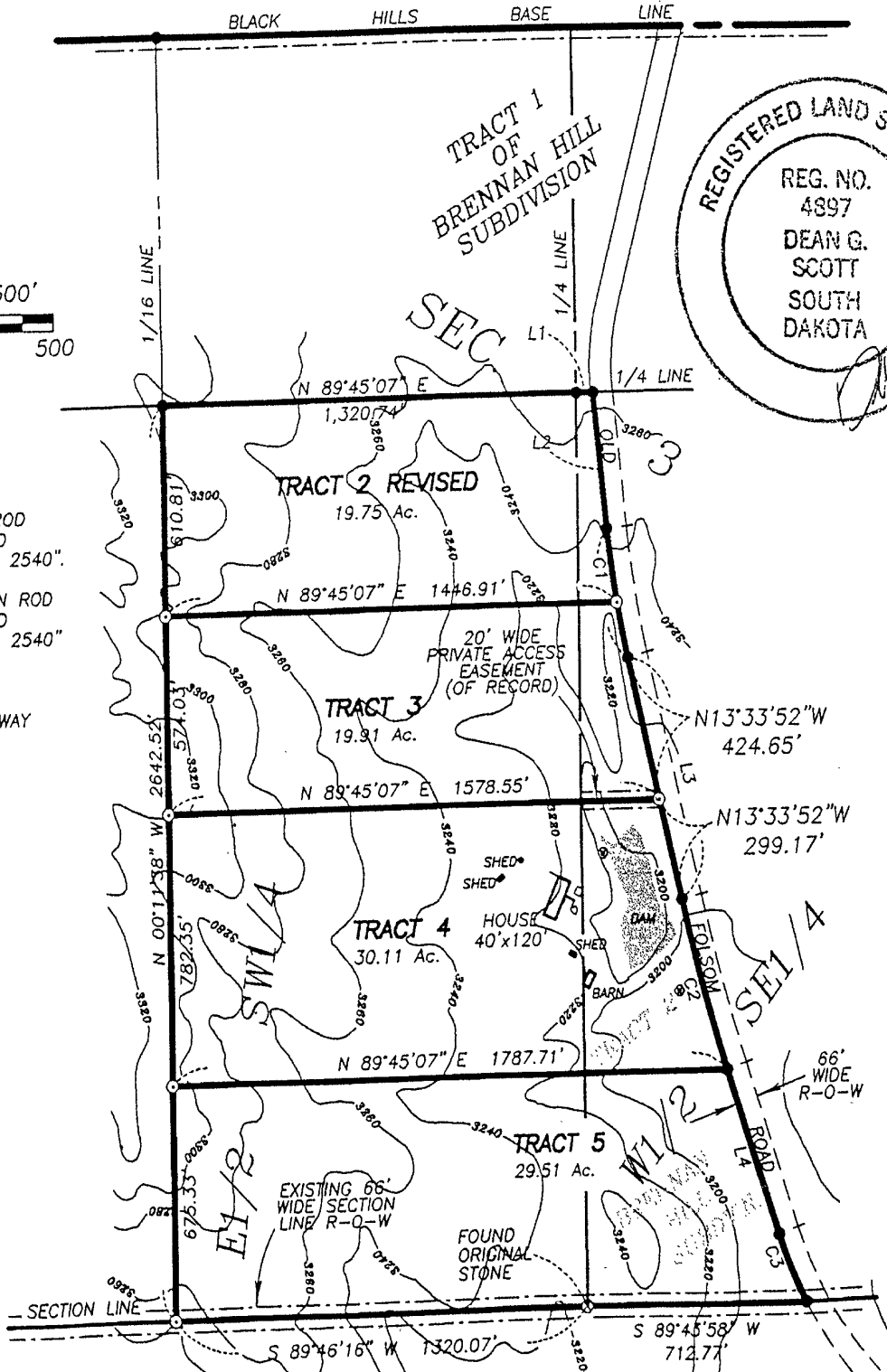
- ⊙ SET 5/8" IRON ROD WITH CAP MARKED "D.C. SCOTT, L.S. 2540".
- FOUND 5/8" IRON ROD WITH CAP MARKED "D.C. SCOTT, L.S. 2540"
- ⊕ WELL
- R-O-W RIGHT-OF-WAY

LINE TABLE

- L1 S 89°45'07" W 55.66'
- L2 S 06°01'13" E 397.62'
- L3 S 13°33'52" E 723.82'
- L4 S 18°38'36" E 504.12'

CURVE TABLE

- C1 Δ=07°32'40"
R=2897.79'
L=381.56'
- C2 Δ=05°04'44"
R=5762.58'
L=510.82'
- C3 Δ=10°02'58"
R=1226.66'
L=215.15'



Handwritten signature and date: 1-8-01