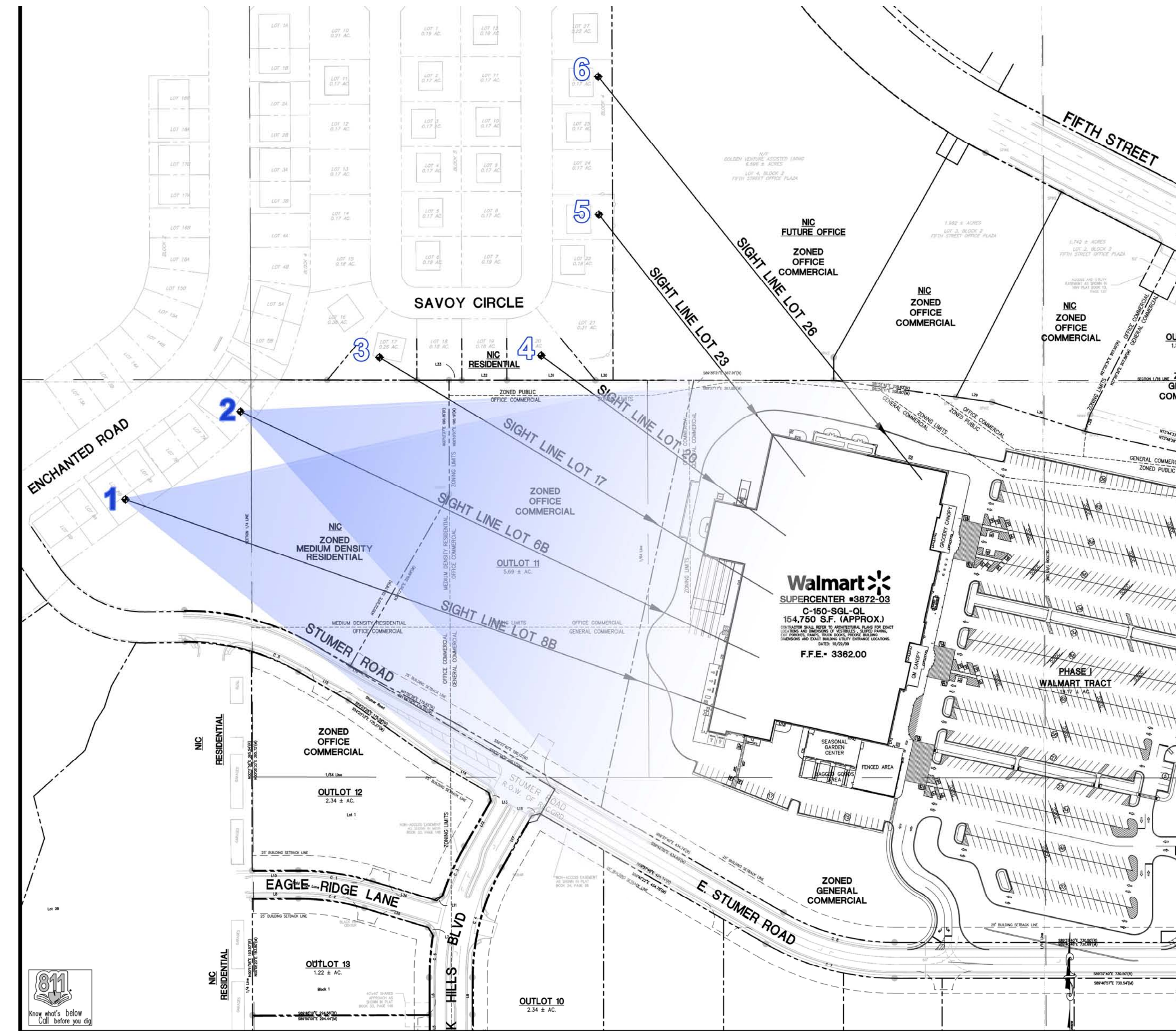


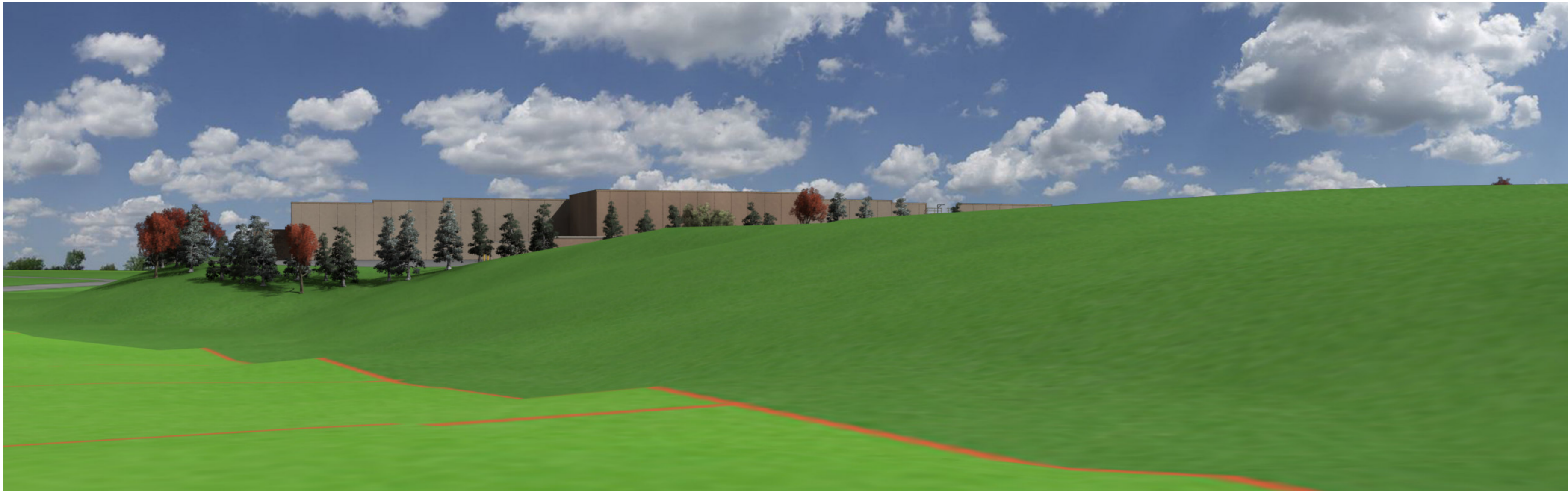
1. Sight Line Lot 8B



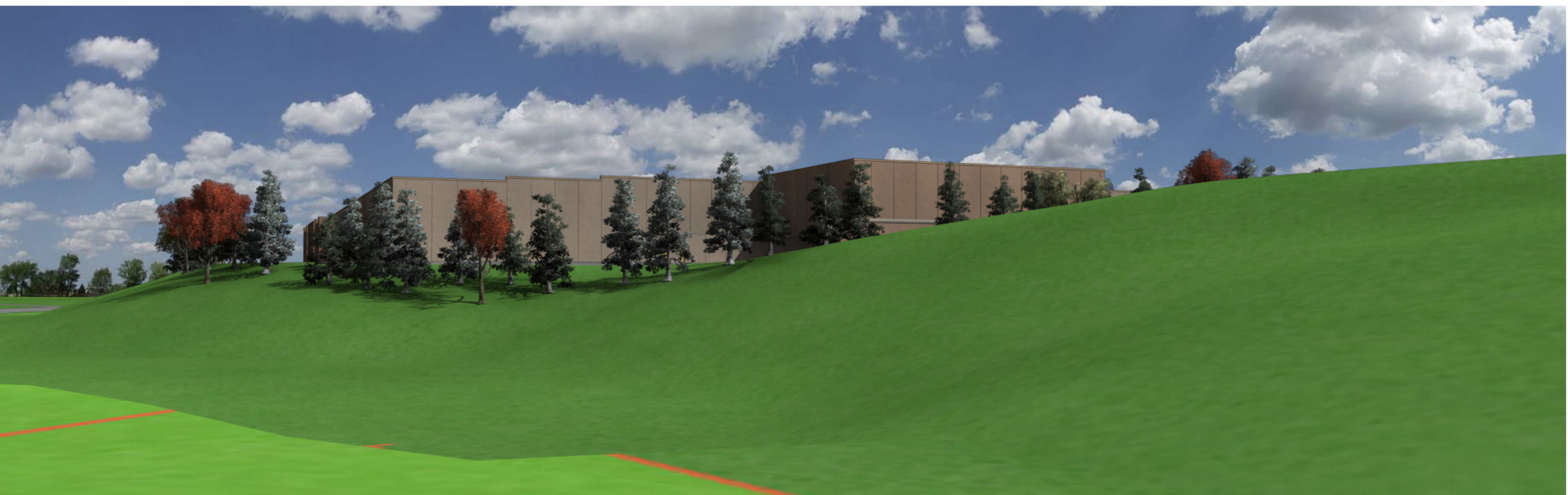
2. Sight Line Lot 6B

Note: Trees are an approximation of mature height and growth. Perspective views are at eye level per diagramed sight lines.

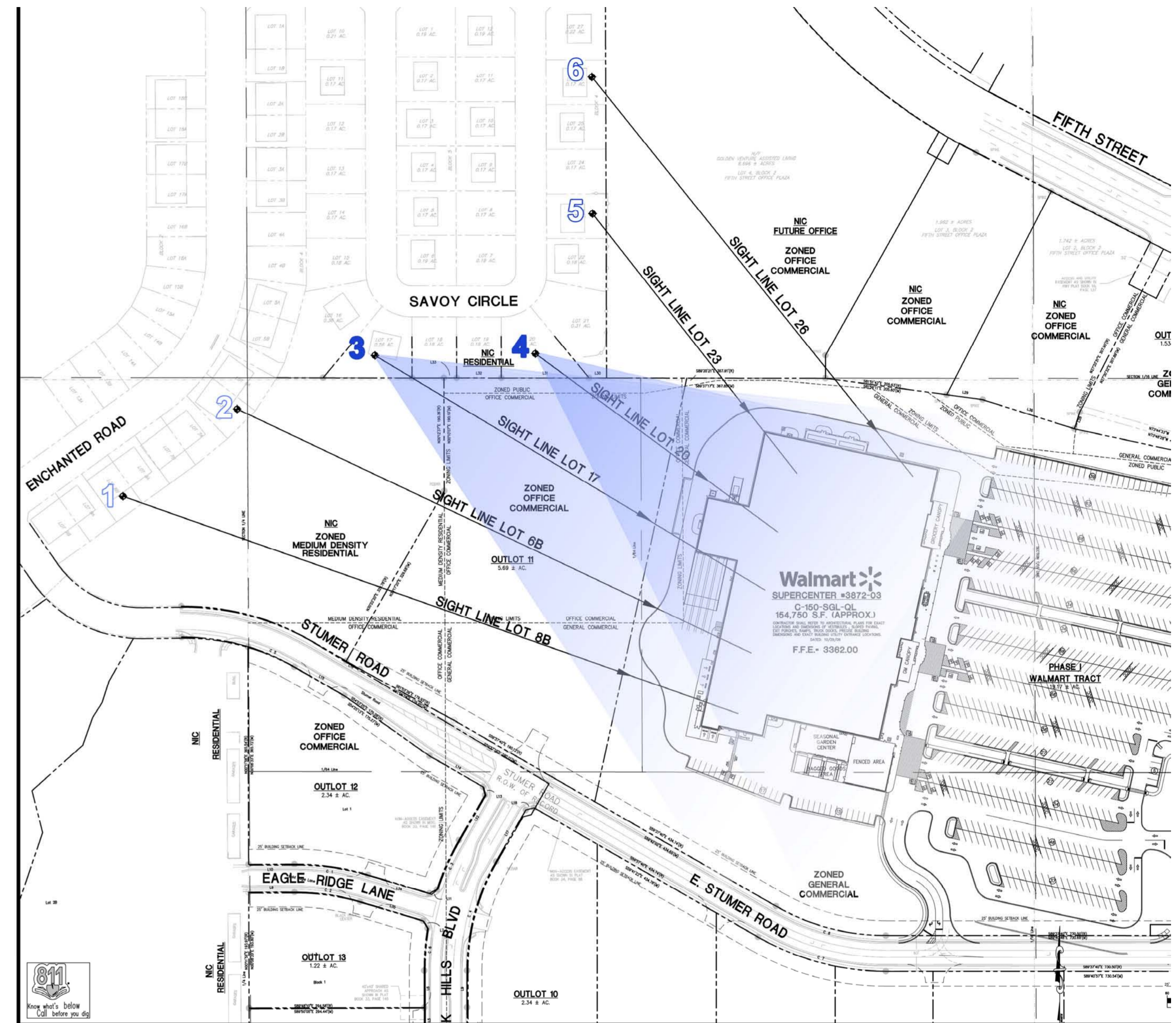




3. Sight Line Lot 17

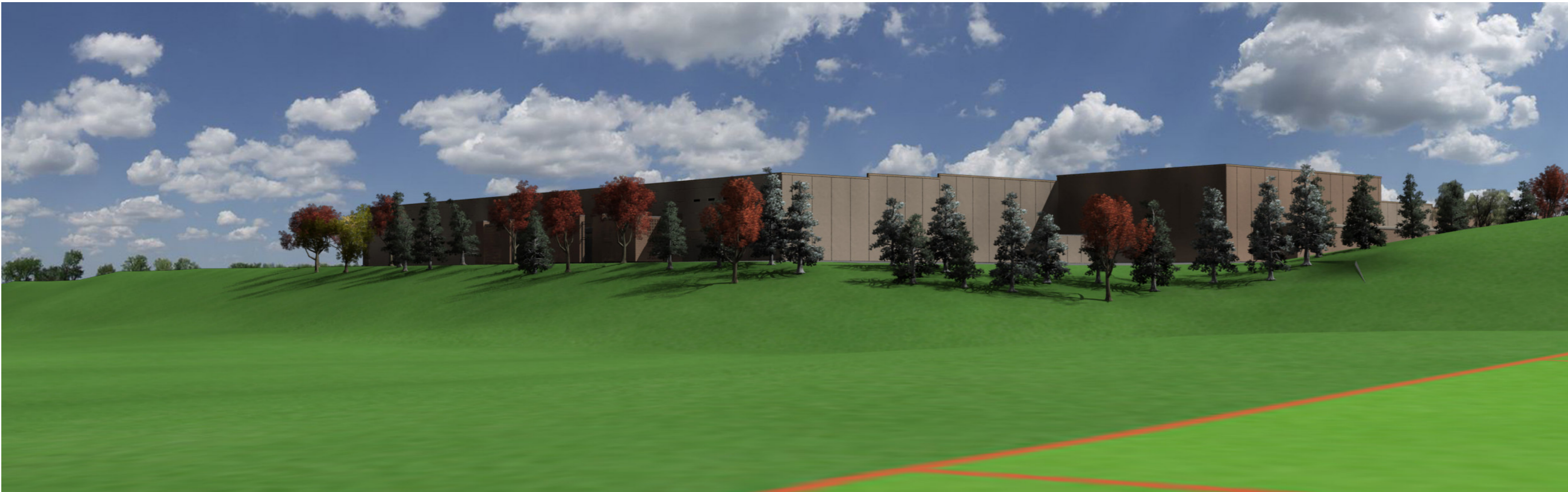


4. Sight Line Lot 20

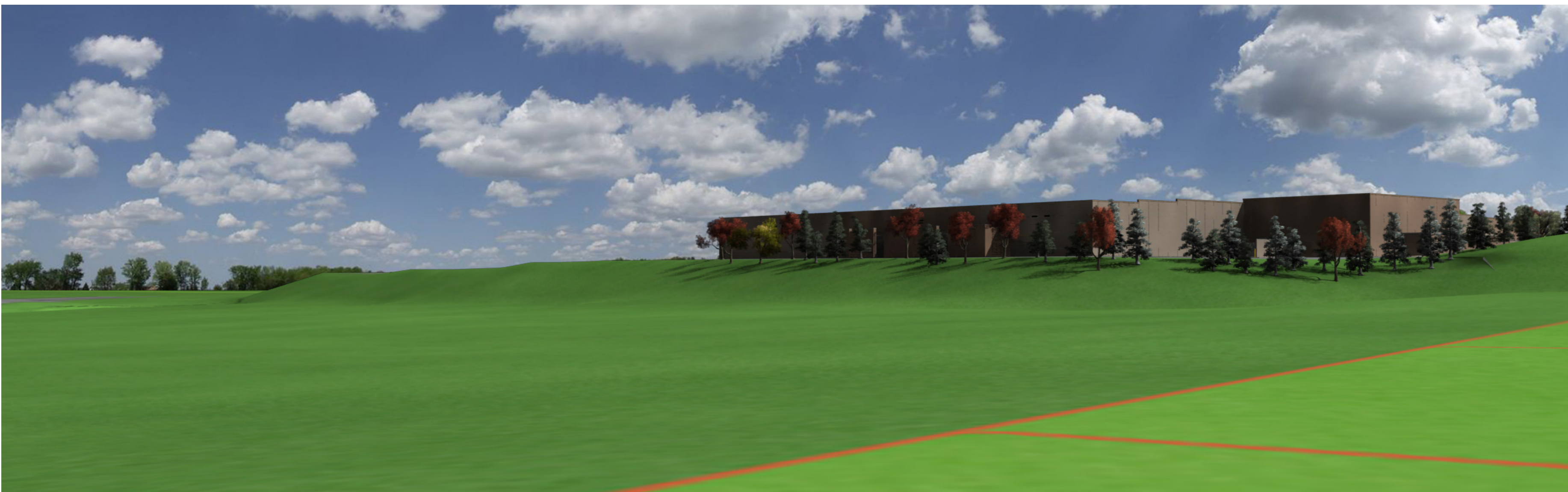


Note: Trees are an approximation of mature height and growth. Perspective views are at eye level per diagramed sight lines.

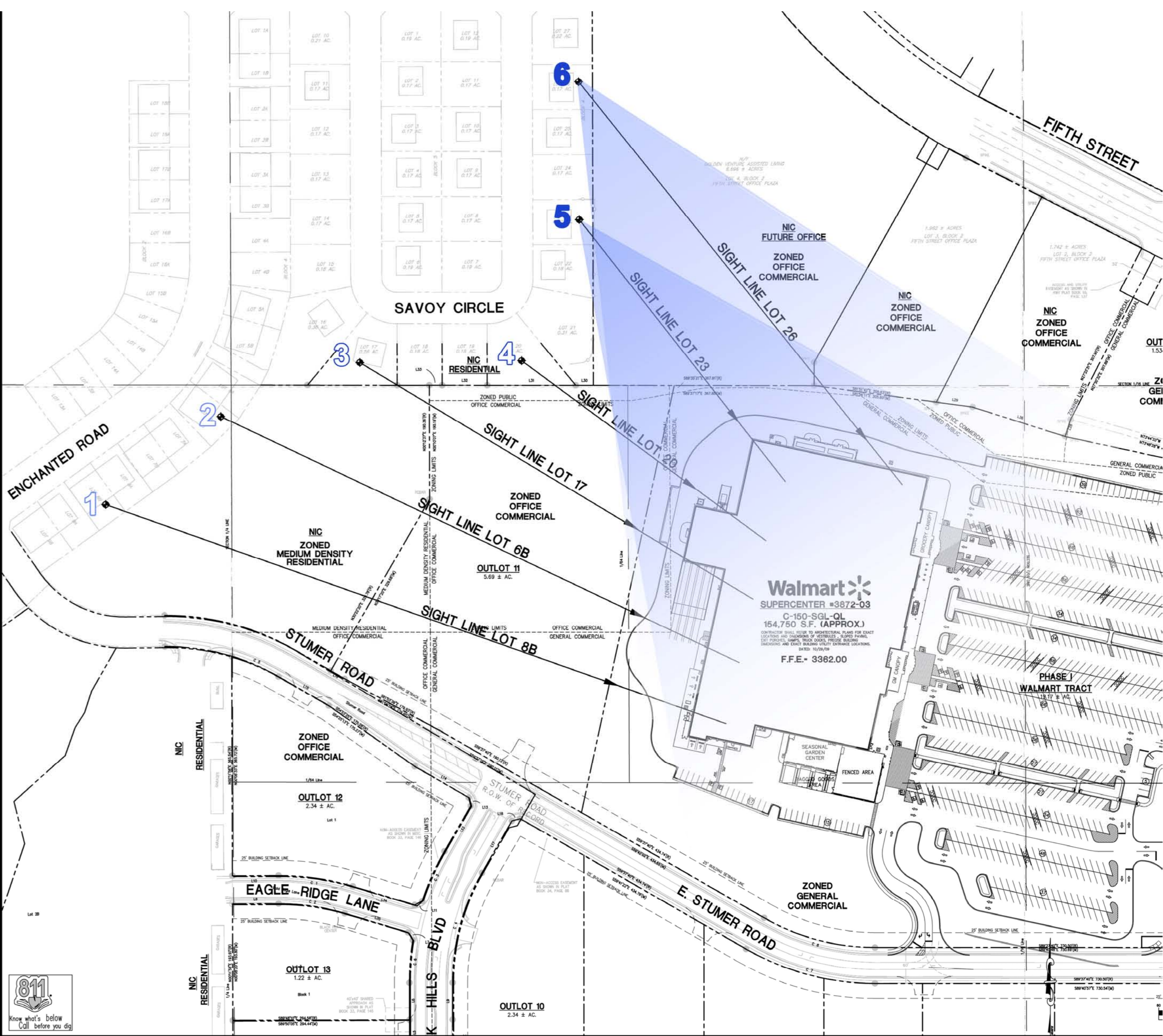




5. Sight Line Lot 23



6. Sight Line Lot 26



Note: Trees are an approximation of mature height and growth. Perspective views are at eye level per diagramed sight lines.



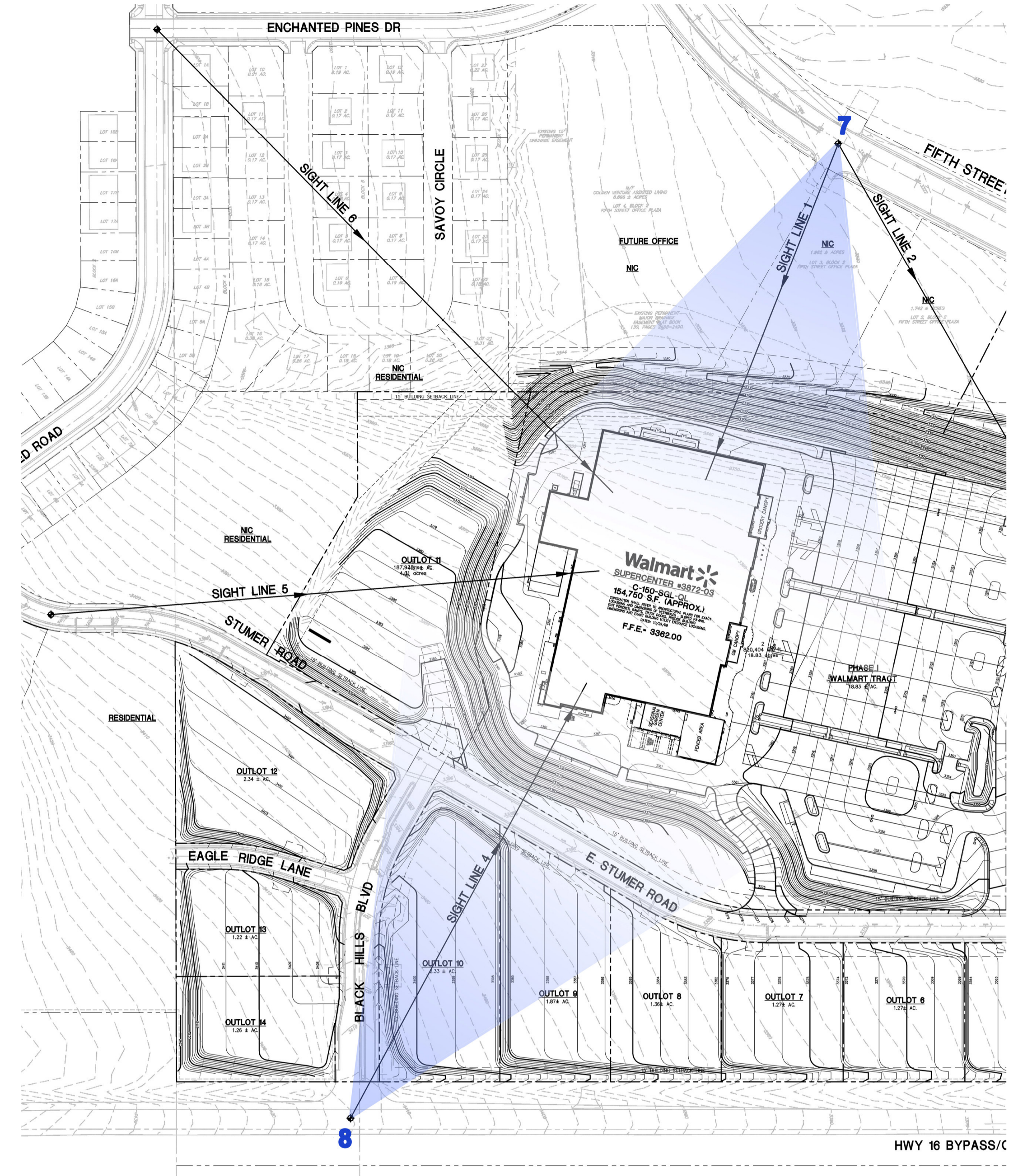
DESIGN REPRESENTATION ONLY-NOT FOR CONSTRUCTION The building images shown are a representation of the current design intent only. The building images may not reflect variations in color, tone, hue, tint, shading, ambient light intensity, materials, texture, contrast, font style, construction variations required by building codes or inspectors, material availability or final design detailing.



7. Sight Line 1



8. Sight Line 4



Note: Trees are an approximation of mature height and growth. Perspective views are at eye level per diagramed sight lines.



April 1, 2010

Rapid City (S), SD Store #3872

Sight Perspectives