

NIC FUTURE OFFICE  
ZONED OFFICE COMMERCIAL

1.962 ± ACRES  
LOT 3, BLOCK 2  
FIFTH STREET OFFICE PLAZA

NIC ZONED OFFICE COMMERCIAL

NIC ZONED MEDIUM DENSITY RESIDENTIAL

ZONED OFFICE COMMERCIAL

OUTLOT II  
3.69 ± AC.

**Walmart**  
SUPERCENTER #3872-03  
C-150-SGL-QL  
154,750 S.F. (APPROX.)  
CONTRACTOR SHALL REFER TO ARCHITECTURAL PLANS FOR EXACT LOCATIONS AND DIMENSIONS OF UTILITIES, EXISTING PAVING, EXIST PIPING, MANHOLE, TELEPHONE, FIBER OPTIC, CABLE, AND OTHER UTILITIES. FIELD SURVEY TO BE CONDUCTED BY CONTRACTOR. DATE: 10/21/09  
F.F.E. = 3362.00

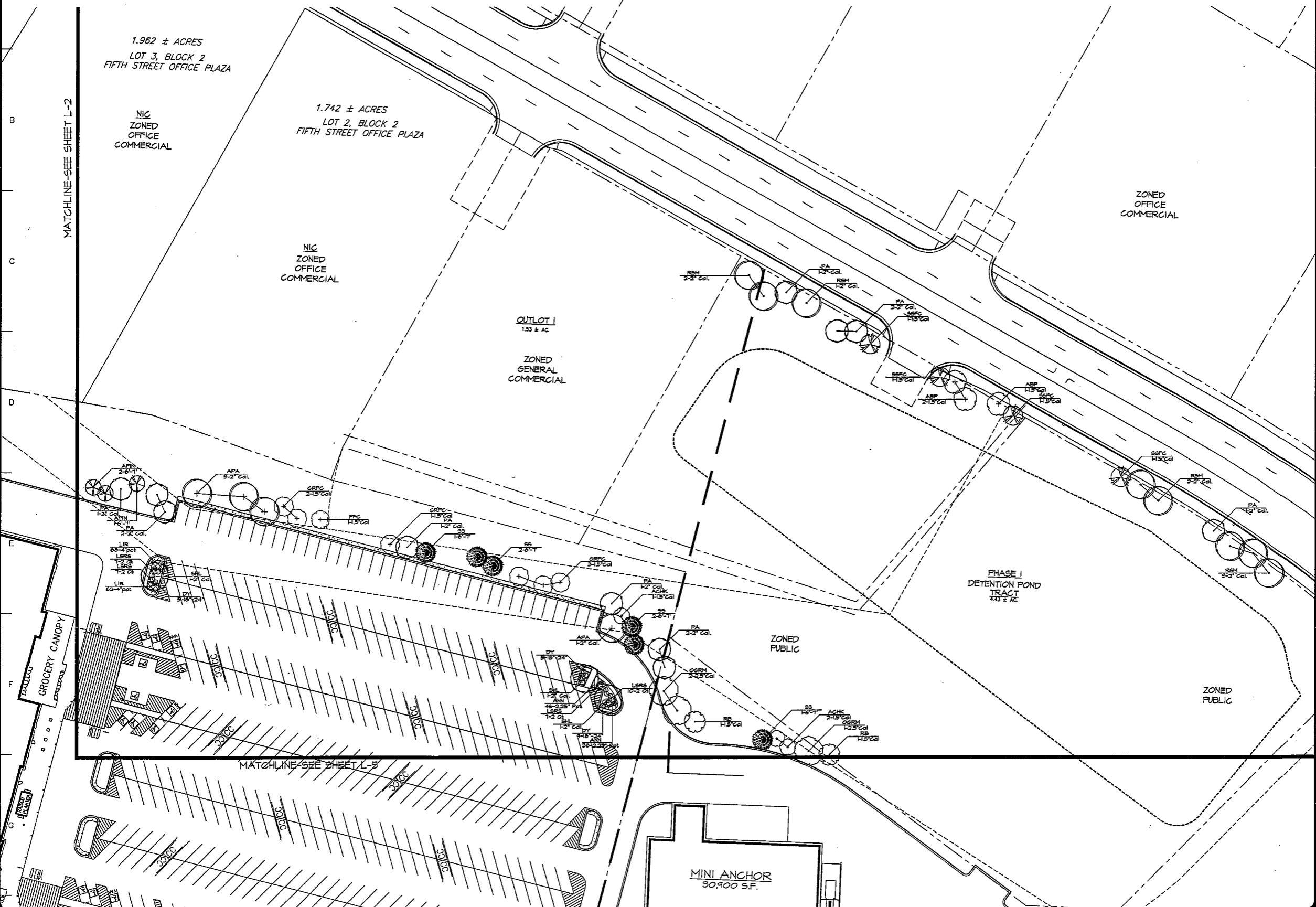
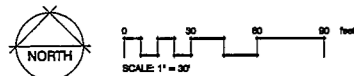
GROCERY CANOPY

REVISIONS	BY

**landscape TECHNOLOGIES**  
1000 43rd Street  
St. Joseph, Missouri 64504  
Tel: (816) 432-1200  
Fax: (816) 432-0200

PRELIMINARY PLANTING PLAN FOR THE PROPOSED  
**Black Hills Center**  
WAL-MART #3872-03  
RAPID CITY, PENNINGTON COUNTY, SOUTH DAKOTA

DRAWN  
R. HARRIS  
CHECKED  
RHH/LSB  
DATE  
3/4/10  
SCALE  
1"=30'-0"  
JOB NO.  
2010-106  
SHEET  
**L-2**  
OF SEVEN SHEETS



1.962 ± ACRES  
LOT 3, BLOCK 2  
FIFTH STREET OFFICE PLAZA

1.742 ± ACRES  
LOT 2, BLOCK 2  
FIFTH STREET OFFICE PLAZA

OUTLOT 1  
1.53 ± AC

PHASE I  
DETENTION POND  
TRACT  
143 ± AC

MINI ANCHOR  
30,900 S.F.

REVISIONS	BY



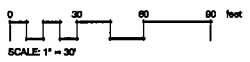
PRELIMINARY PLANTING PLAN FOR THE PROPOSED  
**Black Hills Center**  
 WAL-MART #3872-03  
 RAPID CITY, PENNINGTON COUNTY, SOUTH DAKOTA

DRAWN	R. HARRIS
CHECKED	RHW/LS
DATE	3/15/10
SCALE	1"=30'-0"
JOB No.	2010-106
SHEET	L-3
OF SEVEN SHEETS	

10PD031

ZONED  
MEDIUM DENSITY  
RESIDENTIAL

OUTLOT 11  
5.69 ± AC.



MATCHLINE-SEE SHEET L-2

**Walmart**  
SUPERCENTER #3872-03  
C-150-SGL-01  
154,750 S.F. (APPROX.)

SEASONAL  
GARDEN  
CENTER  
BAGGED GOODS  
AREA  
FENCED AREA

GM CANOPY

ZONED  
OFFICE  
COMMERCIAL

OUTLOT 12  
2.34 ± AC.

RIDGE LANE

E STUMER ROAD

ZONED  
GENERAL  
COMMERCIAL

**Entrance A**

See Planting Detail, Sht. L-6

SIGHT TRIANGLE

OUTLOT 13

BLACK HILLS BOULEVARD

OUTLOT 10  
2.34 ± AC.

ZONED  
GENERAL  
COMMERCIAL

OUTLOT 9  
1.87 ± AC.

OUTLOT 8  
1.36 ± AC.

OUTLOT 7  
0.55 ± AC.

OUTLOT 6  
1.27 ± AC.

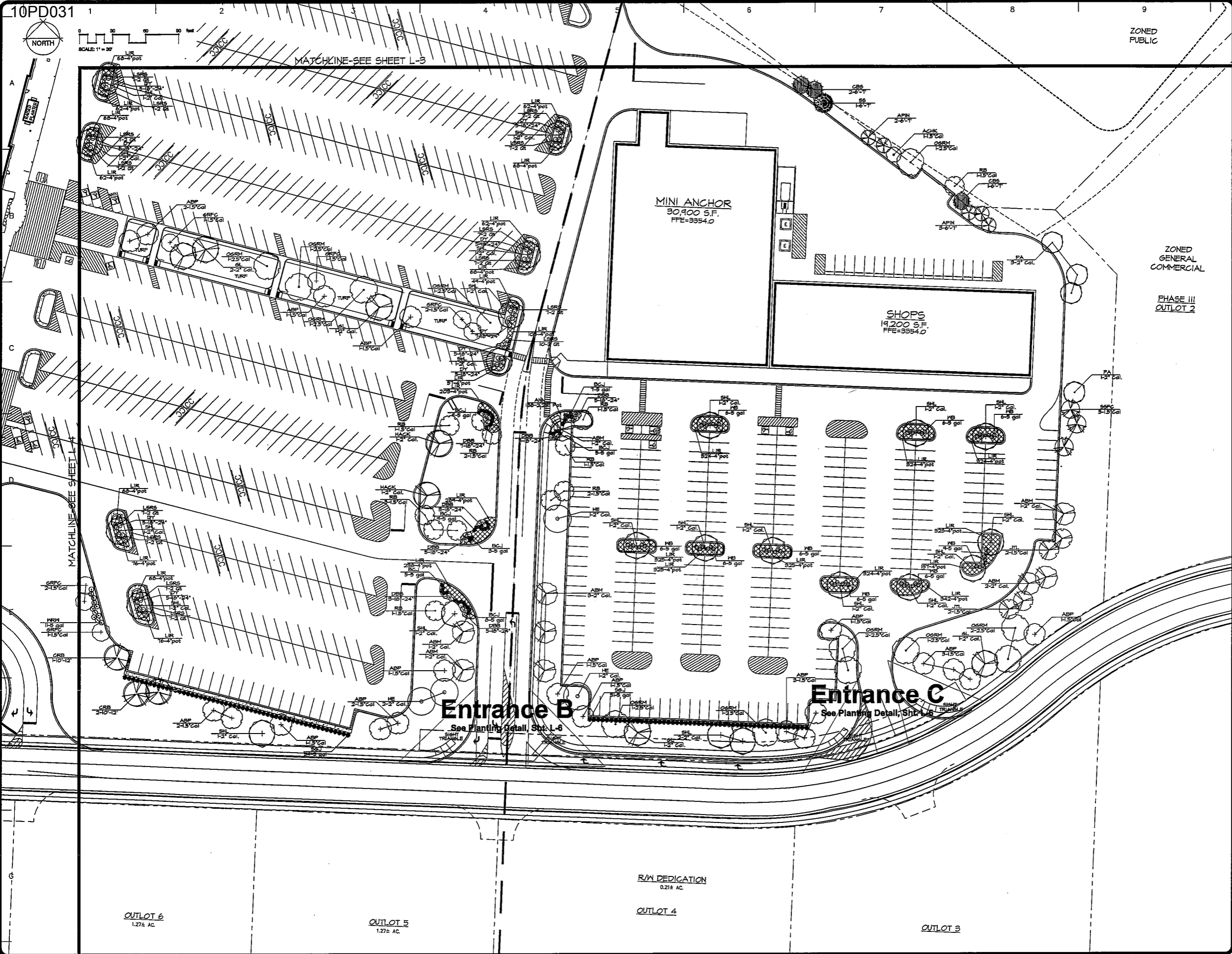
ZONED  
OFFICE  
COMMERCIAL

REVISIONS	BY

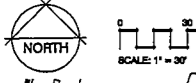
**landscape TECHNOLOGIES**  
 (650) 420-1200  
 87 Jacobs Creek Drive  
 St. Charles, Missouri 63044  
 Fax: (630) 420-1665

PRELIMINARY PLANTING PLAN FOR THE PROPOSED  
**Black Hills Center**  
 WAL-MART #3872-03  
 RAPID CITY, PENNINGTON COUNTY, SOUTH DAKOTA

DRAWN  
R. HARDS  
CHECKED  
R. HARDS  
DATE  
3/19/03  
SCALE  
1"=50'-0"  
JOB NO.  
2003106  
SHEET  
**L-4**  
OF SEVEN SHEETS



10PD031



MATCHLINE-SEE SHEET L-3

ZONED PUBLIC

ZONED GENERAL COMMERCIAL

PHASE III OUTLOT 2

MINI ANCHOR  
30,900 S.F.  
FFE=3354.0

SHOPS  
19,200 S.F.  
FFE=3354.0

Entrance B  
See Planting Detail, Str. L-6

Entrance C  
See Planting Detail, Str. L-6

OUTLOT 6  
1.27± AC.

OUTLOT 5  
1.27± AC.

R/W DEDICATION  
0.21± AC.

OUTLOT 4

OUTLOT 3

REVISIONS	BY

**landscape**  
**TECHNOLOGIES**

6349 132-1250  
617 St. Charles, Missouri 63041  
Fax: (636) 428-4993

PRELIMINARY PLANTING PLAN FOR THE PROPOSED  
**Black Hills Center**  
 WAL-MART #3872-03  
 RAPID CITY, PENNINGTON COUNTY, SOUTH DAKOTA

DRAWN	R. HARDS
CHECKED	RH+VLS
DATE	3/1/10
SCALE	1"=30'-0"
JOB No.	2010-106
SHEET	L-5

L-5

OF SEVEN SHEETS

LANDSCAPE GUIDELINE SPECS:

GENERAL:

- All natural vegetation shall be maintained where it does not interfere with construction or the permanent plan of operation. Every effort possible shall be made to protect existing structures or vegetation from damage due to equipment usage. Contractor shall at all times protect all materials and work against injury to public.
- The landscape contractor shall be responsible for any coordination with other related work being performed by other contractors. Refer to architectural drawings for further coordination of work to be done.
- Underground facilities, structures and utilities must be considered approximately only. There may be other utilities not shown or known. It shall be the landscape contractor's responsibility to determine or verify the existing and exact location of the above (Call 1-800-DIG-RTTE).
- Plant material are to be planted in the same relationship to grade as was grown in nursery conditions. All planting beds shall be cultivated to 6" depth minimum and graded smooth immediately before planting of plants. Plant groundcover to within 12" of trunk of trees or shrubs planted within the area.
- It shall be the landscape contractor's responsibility to:
  - Verify all existing and proposed conditions shown on the drawings prior to commencement of work.
  - Report all discrepancies found with regard to existing conditions or proposed design to the landscape architect immediately for a decision.
  - Obtain the approval of the owner's representative or landscape architect prior to installation.
- Items shown on this drawing take precedence over the material list. It shall be the landscape contractor's responsibility to verify all quantities and conditions prior to implementation of the plan. No substitutions of type or size of plants will be accepted without written approval from the landscape architect. Provide single-item trees unless otherwise noted in plant schedule.
- All plant material shall comply with the recommendations and requirements of ANSI Z601 "American Standards for Nursery Stock".
- It shall be the contractor's responsibility to provide for inspection of the plant material by the Landscape Architect prior to acceptance. Plants not conforming exactly to the plant list will not be accepted and shall be replaced at the landscape contractor's expense.
- All bids are to have unit prices listed. The Owner has the option to delete any portion of the contract prior to signing the contract or beginning work. This will be a unit price contract.
- All plant material to be transplanted shall be transplanted according to guidelines set by AAN standards. Transplanted material will not be guaranteed by the landscape contractor.

MULCH:

- All mulch to be shredded oak bark mulch of 4" depth (after compaction) unless otherwise noted. Mulch shall be clean and free of all foreign materials, including rocks, mold, deleterious materials, etc.
- Edge all beds with black vinyl edge where any turf meets planting beds. Provide alternate price for Permaloc aluminum edging in lieu of vinyl edge.

TOPSOIL:

- Topsoil mix for all proposed landscape plantings shall be five (5) parts well-drained screened organic topsoil to one (1) part garden sphagnum peat moss as per planting details. Rotate till topsoil mix to a depth of 6" minimum and grade smooth.
- Provide a soil analysis, as requested, made by an independent soil-testing agency outlining the % of organic matter, horsetail matter, deleterious material, pH and mineral content.
- Any foreign topsoil used shall be free of rocks, stumps, weeds, brick stones (larger than 1"), litter or any other extraneous or toxic material.
- Landscape contractor to apply pre-emergent herbicide to all planting beds upon completion of planting operations and before application of shredded bark mulch.

MISC. MATERIAL:

- Provide stakes and decalcom of sound, new hardwood, free of knots and defects.
- Tree wrap tape shall be 4" minimum, designed to prevent banner damage and winter freezing. Additionally, only 3-ply tying material shall be used.

TURF:

- All disturbed lawn areas to be sodded with Turf-Type Fescue. Lawn areas shall be unconditionally warranted for a period of 90 days from date of final acceptance. Bare areas more than one square foot per one 50 square feet shall be replaced. Sod shall be cut of a uniform thickness of 3/4". No broken pieces, irregular pieces or torn pieces will be accepted.
- Any points carrying concentrated water loads and all slopes of 10% or greater shall be sodded; all slopes of 50% or greater shall be staked at 90° OZ.
- All sod shall be placed a maximum of 24 hours after harvesting.
- Recondition existing lawn areas damaged by Contractor's operations including equipment/material storage and movement of vehicles.

ADDITIONAL XERISCAPE NOTES:

- All landscaped areas are to receive a minimum of 4" topsoil. See 2100 Specification.
- All plant material shall be healthy, vigorous and free of pests and disease.
- All plant material shall be container grown or balled and burlapped as indicated in the plant schedule.
- All trees shall have a straight trunk and full head and meet all requirements specified.
- All material is subject to the approval of the Landscape Architect before, during and after the installation.
- All trees must be staked and staked as shown in the planting details.
- All planting areas shall be completely mulched as specified.
- Prior to construction, the contractor shall be responsible for locating all underground utilities and shall avoid damage to all utilities during the course of the work. Locations of existing buried utilities shown on the plans are based upon best available information and are to be considered approximate. It shall be the responsibility of the contractor to 1) verify the locations of utility lines adjacent to the work area, 2) protect all of the utility lines during construction and 3) repair any and all damage to utilities, structures, site appurtenances, etc. which occurs as a result of the construction.
- The contractor shall be responsible for verifying all quantities shown on these plans before pricing the work.
- The contractor shall be responsible for delivery schedule and protection between delivery and planting per specifications to maintain healthy plant conditions.
- Any plant material which is diseased, distressed, dead or rejected (prior to substantial completion) shall be promptly removed from the site and replaced with material of the same species, quantity and size and meeting all plant list specifications.
- The contractor shall completely guarantee all plant material for a period defined in the 02000 Specification and shall promptly make all replacements during the normal planting season.
- After being dug at the nursery source, all trees in fact shall be acclimated for two (2) weeks under a mist system prior to installation. Standards set forth in "American Standard for Nursery Stock" represent guideline specifications only and shall constitute minimum quality requirements for plant material.
- Where shown on the plans and details, planting beds are to be completely covered with a hardwood mulch from a local source harvested in a sustainable manner to a minimum depth of four (4) inches. Refer to Mail-Mart specifications for information needed for implementation of planting plans.
- Hard mulch is required in landscaped islands as specified. All plant material quantities shown are approximate. Contractor shall be responsible for complete coverage of all planting beds at spacing shown.
- This plan is to be implemented cooperatively with SWPPP plan, as needed, to maximize the effectiveness of the SWPPP plan for the site. The contractor is encouraged to complete temporary or permanent seeding or sodding in stages for soil stabilization as areas are completed after grading.
- This plan does not present any temporary stabilization required as part of the SWPPP plan.

WARRANTY:

- All plant material (excluding ground cover, perennials and annuals) are to be warranted for a period of 12 months after installation at 100% of the installed price.
- Any plant material found to be defective shall be removed and replaced within 30 days of notification or in growth season determined to be best for that plant.
- Only one replacement per tree or shrub shall be required at the end of the warranty period, unless loss is due to failure to comply with warranty.
- Lawn establishment period will be in effect once the lawn has been mowed three times. Plant establishment period shall commence on the date of acceptance and 100% completion.

MAINTENANCE:

- Landscape Contractor shall provide a separate proposal to maintain all plants, shrubs, groundcover, perennials and annuals for a period of 12 months after acceptance.
- Contractor shall ensure that only competent and trained personnel shall provide such services and that such services be provided in a timely manner.

PLANT SCHEDULE

TREES	QTY	BOTANICAL NAME / COMMON NAME	SIZE
RSM	11	Acer rubrum 'Franksred' / 'Red Sunset' Maple	2" Cal.
OGRM	15	Acer rubrum 'October Glory' / 'October Glory' Maple	2.5" Cal.
ABM	25	Acer x freemanii 'Jeffersred' / Autumn Blaze Maple	2" Cal.
CRB	4	Betula nigra 'Cully' / Heritage River Birch	10"-12'
HACK	6	Celtis occidentalis / Common Hackberry	2" Cal.
APA	7	Fraxinus americana 'Autumn Purple' / Autumn Purple Ash	2" Cal.
PA	15	Fraxinus pennsylvanica 'Patmore' / 'Patmore' Ash	2" Cal.
SHL	27	Gleditsia triacanthos 'Skyline' / 'Skyline' Locust	2" Cal.
GL	13	Tilia cordata 'Greenspire' / Greenspire Littleleaf Linden	2" Cal.
HE	4	Ulmus 'Homestead' / Homestead Elm	2" Cal.

EVERGREEN TREES	QTY	BOTANICAL NAME / COMMON NAME	SIZE
NS	15	Picea abies / Norway Spruce	6'-7'
SS	12	Picea omorika / Serbian Spruce	6'-7'
CBS	22	Picea pungens 'Glauca' / Colorado Blue Spruce	6'-7'
APIN	24	Pinus nigra / Austrian Pine	6'-7'

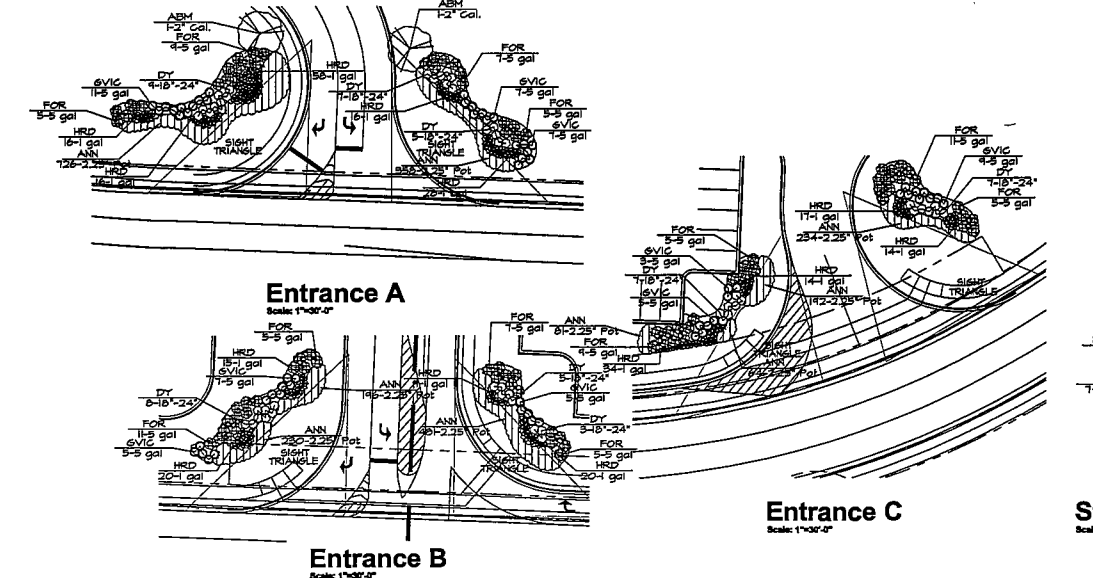
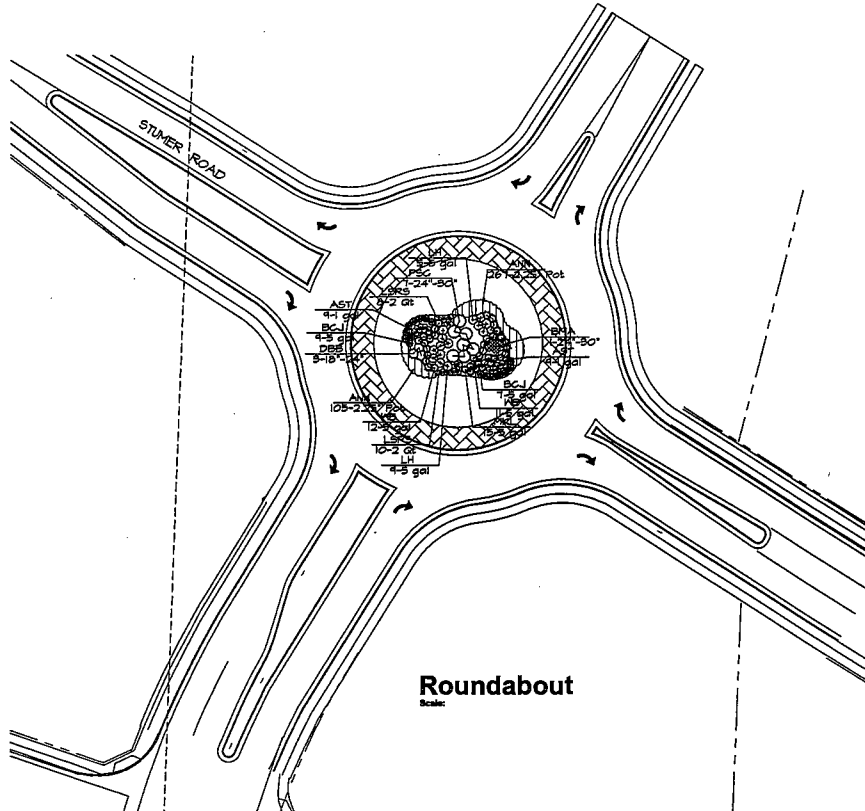
FLOWERING TREES	QTY	BOTANICAL NAME / COMMON NAME	SIZE
RB	20	Cercis canadensis / Redbud	1.5" Cal
GRFC	13	Malus 'Golden Raindrops' / Golden Raindrops Flowering Crab	1.5" Cal
PFC	12	Malus 'Prairifire' / Prairifire Crabapple	1.5" Cal
SSFC	7	Malus 'Spring Snow' / Spring Snow Flowering Crab	1.5" Cal
ACHK	8	Prunus maackii / Amur Chokecherry	1.5" Cal
ABP	27	Pyrus calleryana 'Autumn Blaze' / Autumn Blaze Pear	1.5" Cal
JTL	5	Syringa reticulata 'Ivory Silk' / Ivory Silk Japanese Tree Lilac	1.5" Cal

SHRUBS	QTY	BOTANICAL NAME / COMMON NAME	SIZE
WB	87	Buxus microphylla 'Wintergreen' / Wintergreen Boxwood	5 gal
DBB	34	Euonymus alatus 'Compactus' / Compact Burning Bush	18"-24"
FOR	84	Forsythia intermedia 'Northern Gold' / Northern Gold Forsythia	5 gal
LH	14	Hydrangea paniculata 'Limelight' TM / Limelight Hydrangea	5 gal
SGJ	105	Juniperus chinensis 'Sea Green' / Sea Green Juniper	5 gal
BCJ	62	Juniperus horizontalis 'Blue Chip' / Blue Chip Juniper	5 gal
GVIC	59	Ligustrum vicaryi / Golden Privet	5 gal
PSC	7	Prunus X cistena / Purple Sand Cherry	24"-30"
MKL	18	Syringa patula 'Miss Kim' / Miss Kim Lilac	5 gal
DY	127	Taxus media 'Densiformis' / Dense Yew	18"-24"
BMA	1	Viburnum dentatum 'Blue Muffin' / Blue Muffin Arrowwood	24"-30"
WRW	39	Weigela florida 'Wine & Roses' / Wine & Roses Weigela	5 gal

ANNUALS/PERENNIALS	QTY	BOTANICAL NAME / COMMON NAME	SIZE
ART	16	Artemisia schmidtiana 'Silver Mound' / Silver Mound Artemisia	1 gal
AST	18	Aster novae-angliae 'Purple Dome' / Purple Dome Aster	1 gal
HRD	277	Hemerocallis hybrid 'Happy Returns' / Happy Returns Daylily	1 gal
LSRS	178	Perovskia atriplicifolia 'Little Spire' TM / Little Spire Russian Sage	2 qt

GRASSES	QTY	BOTANICAL NAME / COMMON NAME	SIZE
MLMG	2	Miscanthus sinensis 'Morning Light' / Morning Light Maiden Grass	5 gal

GROUND COVERS	QTY	BOTANICAL NAME / COMMON NAME	SIZE
[Cross-hatch pattern]	5,232	Liriope spicata / Creeping Liriope	4" pot @ 12" oc
[Vertical lines pattern]	3,156	Min. of Five Varieties / Mixed Annuals	2.25" Pot @ 12" oc



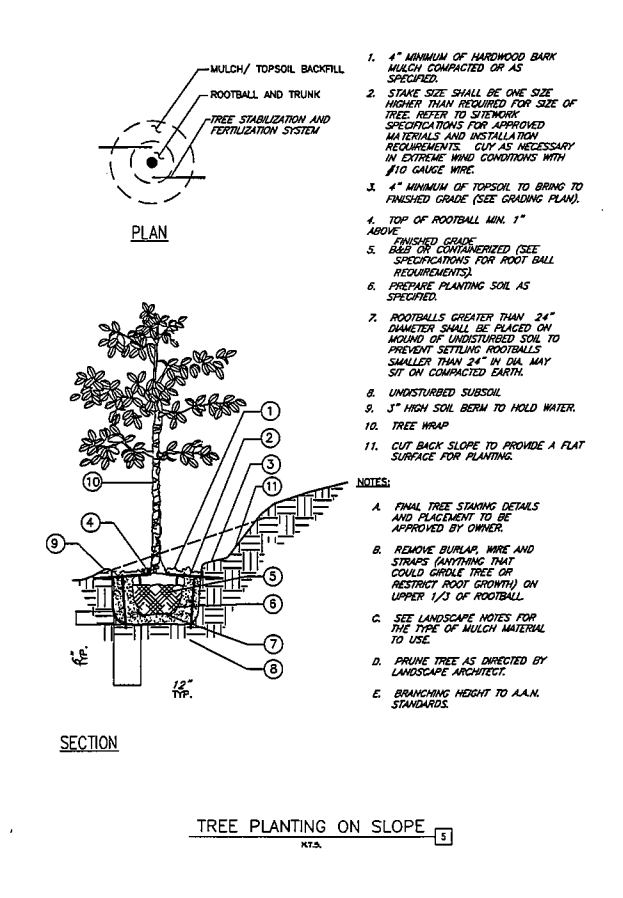
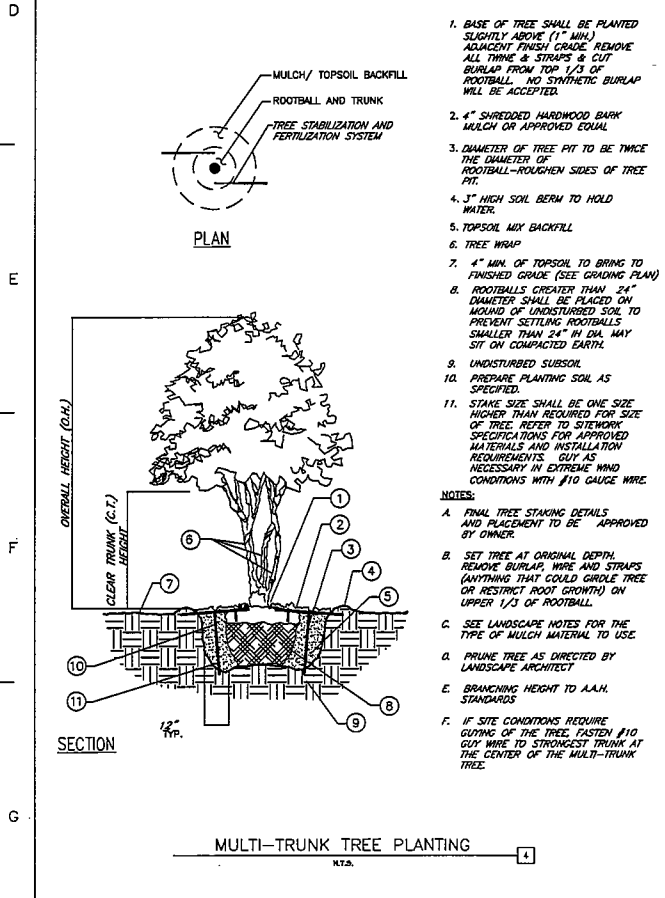
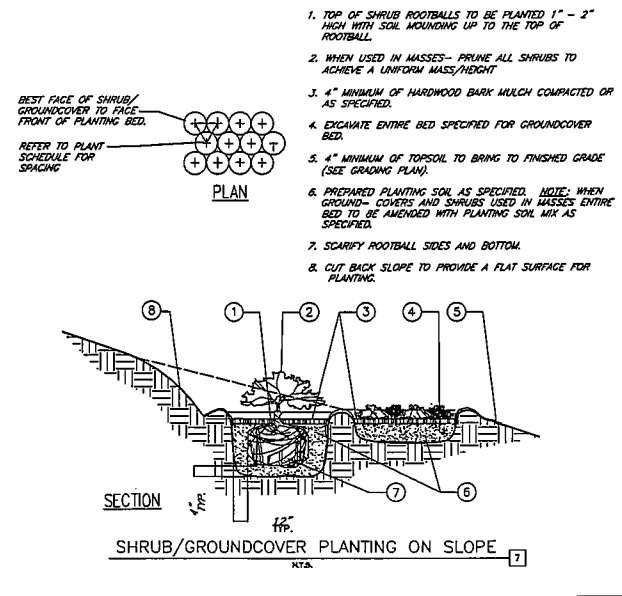
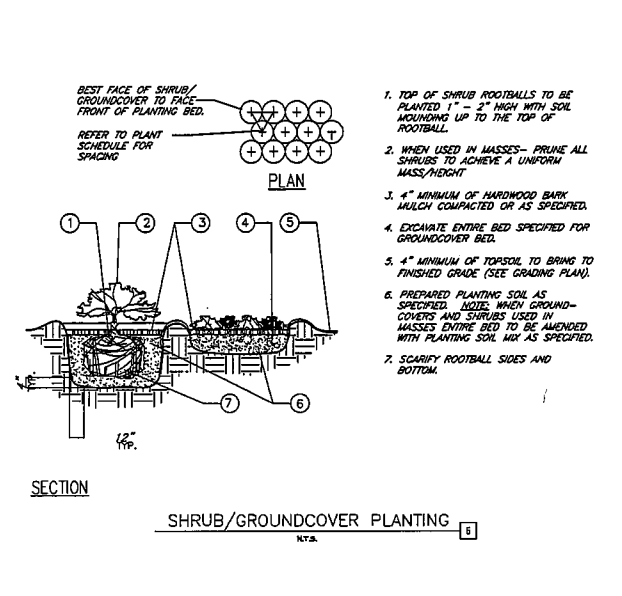
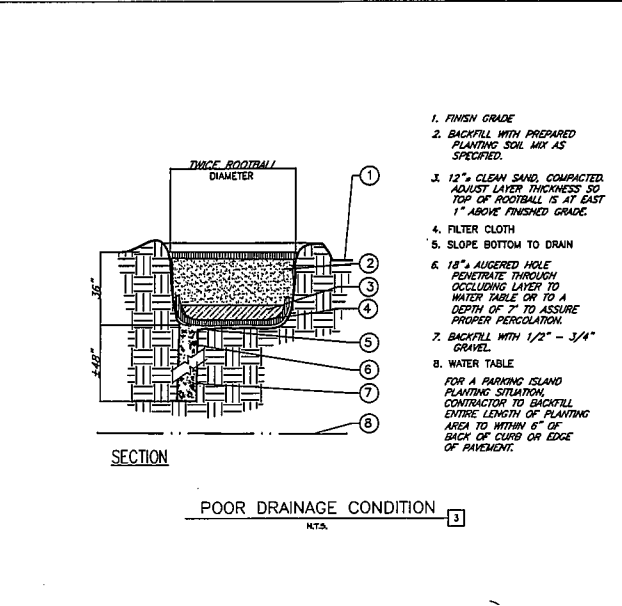
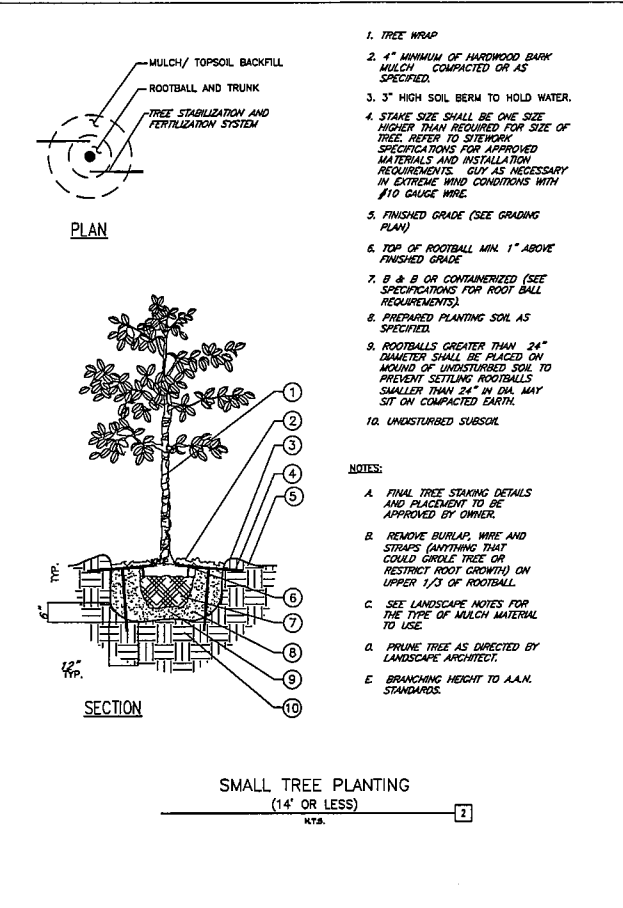
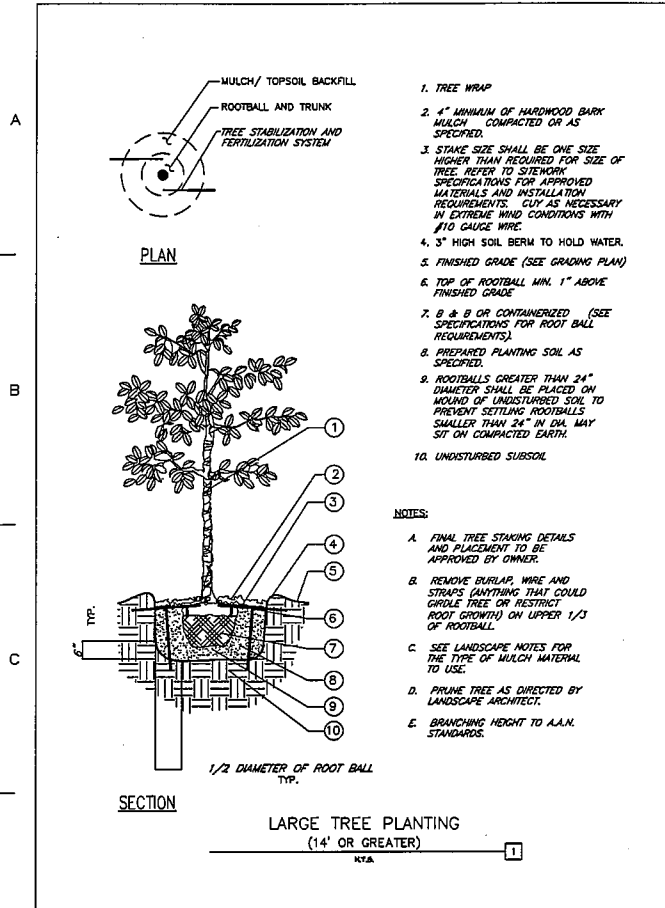
REVISIONS	BY

**landscape TECHNOLOGIES**  
 (651) 435-1200  
 67 Joseph Creek Drive  
 St. Charles, Missouri 63043  
 Fax: (651) 435-1605

**PRELIMINARY PLANTING PLAN FOR THE PROPOSED**  
**Black Hills Center**  
 WAL-MART #3872-03  
 RAPID CITY, PENNINGTON COUNTY, SOUTH DAKOTA

DRAWN R. MARDIS
CHECKED RW/LS/B
DATE 3/1/10
SCALE 1"=30'-0"
SHEET NO. 2010-106
SHEET
<b>L-6</b>
OF SEVEN SHEETS

REVISIONS	BY



**permaloc**  
 WORLD'S BEST LANDSCAPE EDGING

PERMALOC CORPORATION  
 1000 BARRY STREET  
 HOLLAND, MA 04044  
 1-800-393-2855  
 PHONE: (617) 362-8200  
 FAX: (617) 364-7170  
 WWW.PERMALOC.COM

**ALTERNATE #1: PERMALOC ALUMINUM EDGE DETAIL**

RED MEDIA OR AGGREGATE TOP OF EDGING TO BE MINIMUM OF 12" (24" MIN. ABOVE FINISHED GRADE).  
 PERMALOC ALUMINUM EDGING  
 COMPACT GRADES ADJACENT TO EDGING TO AVOID SETTLING OR BRUSH ANIMALS FROM BLOCK INTO PREPARED LAYERS OF THE EDGING.

PRELIMINARY PLANTING PLAN FOR THE PROPOSED  
**Black Hills Center**  
 WAL-MART #3872-03  
 RAPID CITY, PENNINGTON COUNTY, SOUTH DAKOTA