

RAPID CITY POLICE DEPARTMENT



Karl Jegeris, Chief of Police – July 27th, 2015

Building the 2016 Operating Budget

- 2015 Original Budget
 \$13,575,570
 - ▣ Wages & Benefits \$11,290,633

- 2016 Mayor's Recommended Budget \$14,711,342
 - ▣ Wages & Benefits \$12,359,774
 - Submitted Dept. of Justice Grant for 75% of 6 Add'l Officers.
 - Approx. 84% of budget to wages/benefits

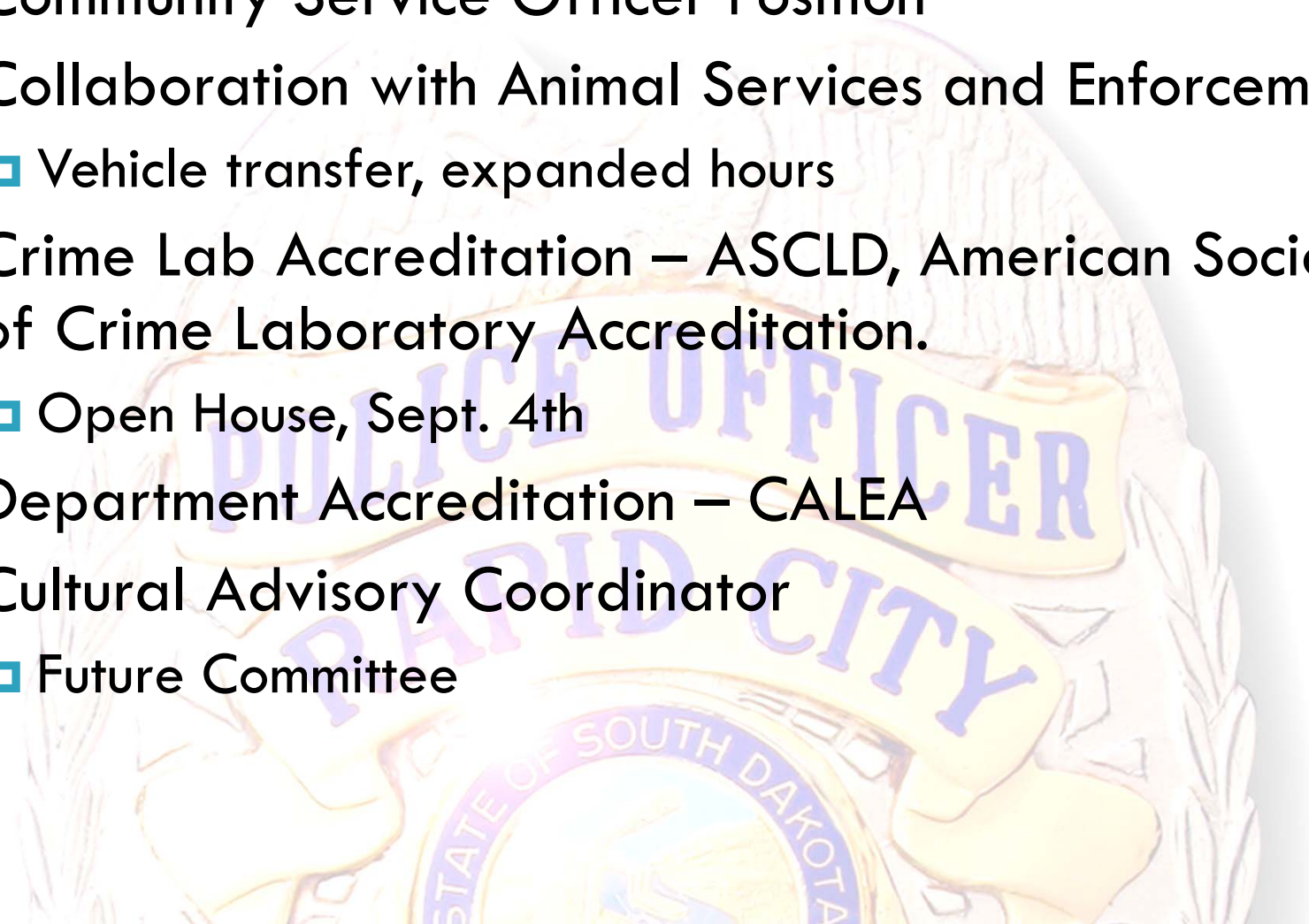
- 5% increase in health insurance cost.

- 10% increase in workers comp insurance cost.

Expand Access to Service

Focus on Improving Efficiencies/Professionalism

- ❑ Community Service Officer Position
- ❑ Collaboration with Animal Services and Enforcement
 - ▣ Vehicle transfer, expanded hours
- ❑ Crime Lab Accreditation – ASCLD, American Society of Crime Laboratory Accreditation.
 - ▣ Open House, Sept. 4th
- ❑ Department Accreditation – CALEA
- ❑ Cultural Advisory Coordinator
 - ▣ Future Committee



Other Items

- ❑ Public Safety Building Remodel/Repurpose

- ❑ Expanded Training Space
- ❑ Administration relocation
- ❑ Patrol expansion
- ❑ Parking Areas

\$100,000 from 2014 CIP / \$50,000 from 2015 CIP



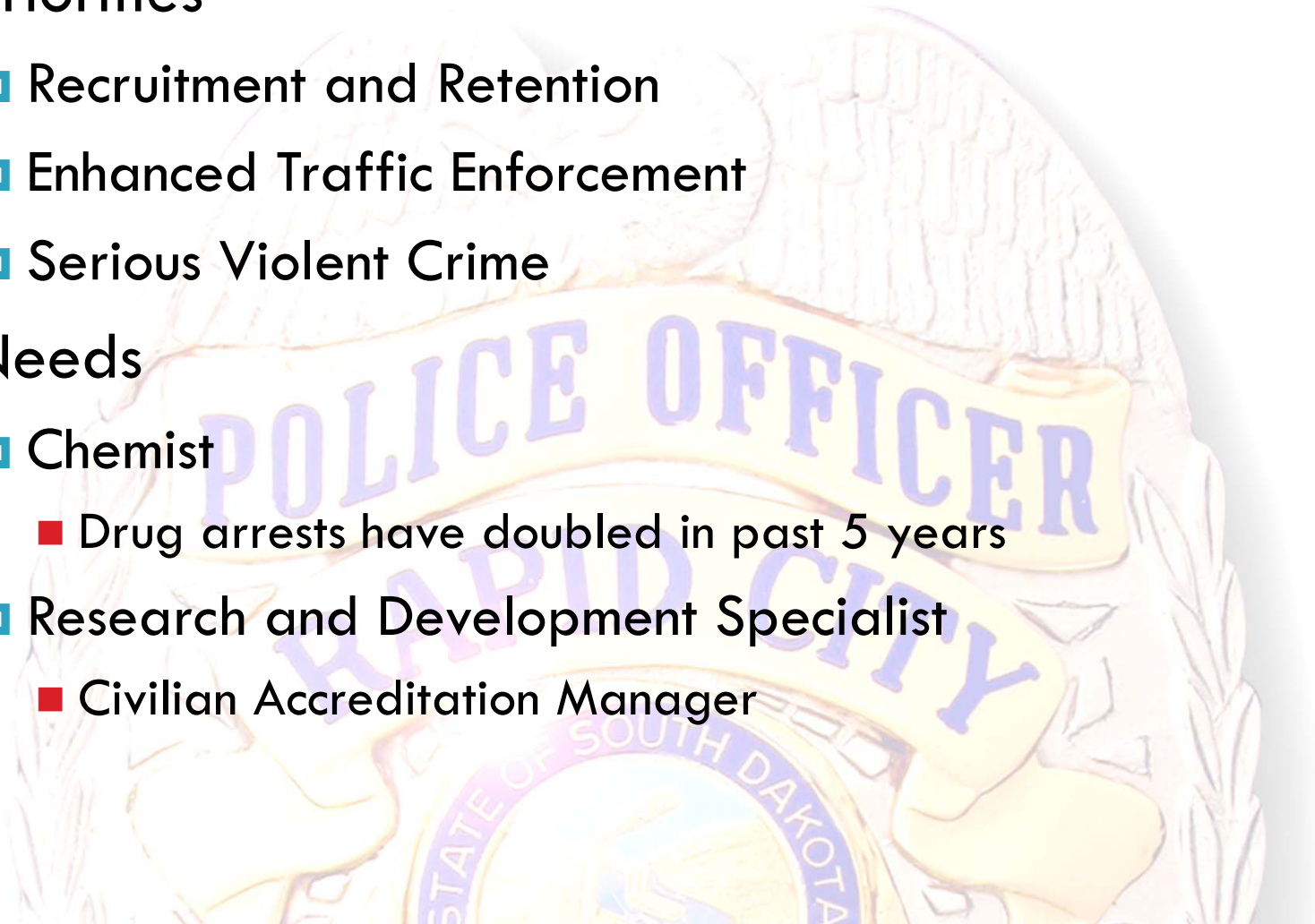
Other Items

- Priorities

- Recruitment and Retention
- Enhanced Traffic Enforcement
- Serious Violent Crime

- Needs

- Chemist
 - Drug arrests have doubled in past 5 years
- Research and Development Specialist
 - Civilian Accreditation Manager



2014 Statistical Crime Analysis

CALLS FOR SERVICE

TOP 5 CFS

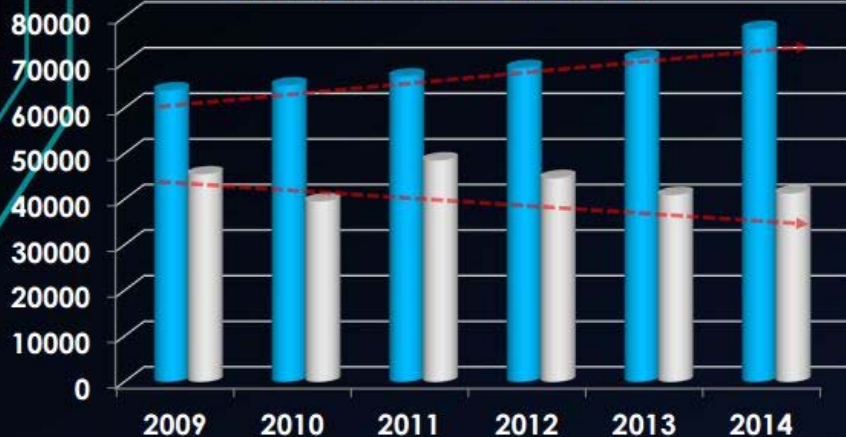
CODE	COUNT
911	5,755
DIST	4,865
SUSP	3,358
THEFT	3,170
ACC	2,771

118,738
total CFS

CFS to Population Count



Citizen vs Officer



HOW REPORTED	2009	2010	2011	2012	2013	2014
CITIZEN INITIATED	63,937	65,016	66,962	68,825	70,987	77,406
OFFICER INITIATED	45,514	39,587	48,549	44,672	40,991	41,332

■ CITIZEN INITIATED ■ OFFICER INITIATED



RAPID CITY POLICE DEPARTMENT

2014

2014 Statistical Crime Analysis

CRIME

16,364

worked cases

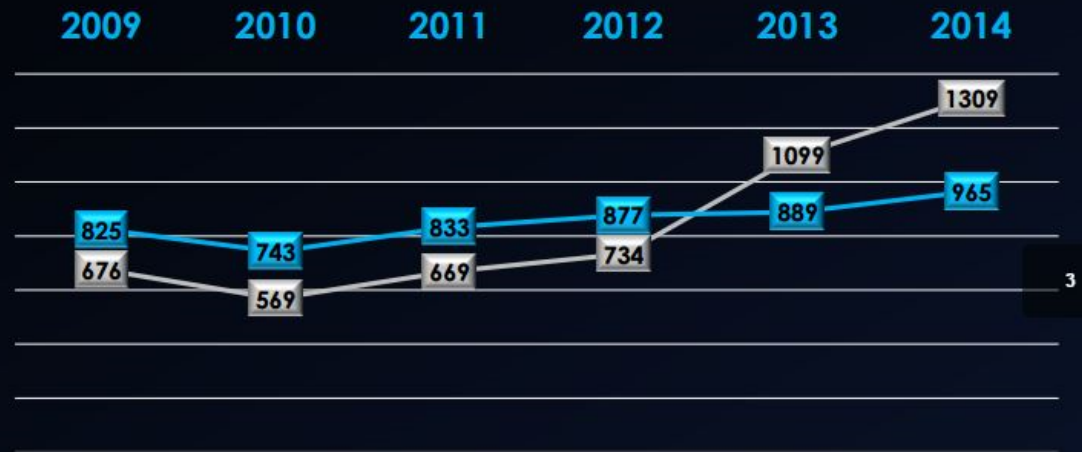
8,185

total arrests

DUI

DRUG

Arrest Count by Year



CRIME TYPE	2009	2010	2011	2012	2013	AVG	2014	% CHG FM 2013 to 2014	% CHG FM AVG	ACTIVITY LEVEL
AGGRAVATED ASSAULT	160	221	242	222	300	229	296	-1.3%	29.3%	Moderately High
ARSON	6	1	4	3	7	4	3	-57.1%	-28.6%	Normal
BURGLARY	453	487	510	579	559	518	451	-19.3%	-12.9%	Moderately Low
MOTOR VEHICLE THEFT	130	125	162	241	154	162	219	42.2%	34.9%	Moderately High
MURDER	3	1	2	5	4	3	4	0.0%	33.3%	Normal
ROBBERY	43	67	66	58	51	57	59	15.7%	3.5%	Normal
SEXUAL ASSAULT	100	99	111	118	118	109	162	37.3%	48.4%	Very High

***2013 SEXUAL ASSAULT STATISTICS REFLECT A CHANGE IN UNIFORMED CRIME REPORTING REGULATIONS.

1,309

drug arrests

965

DUI arrests

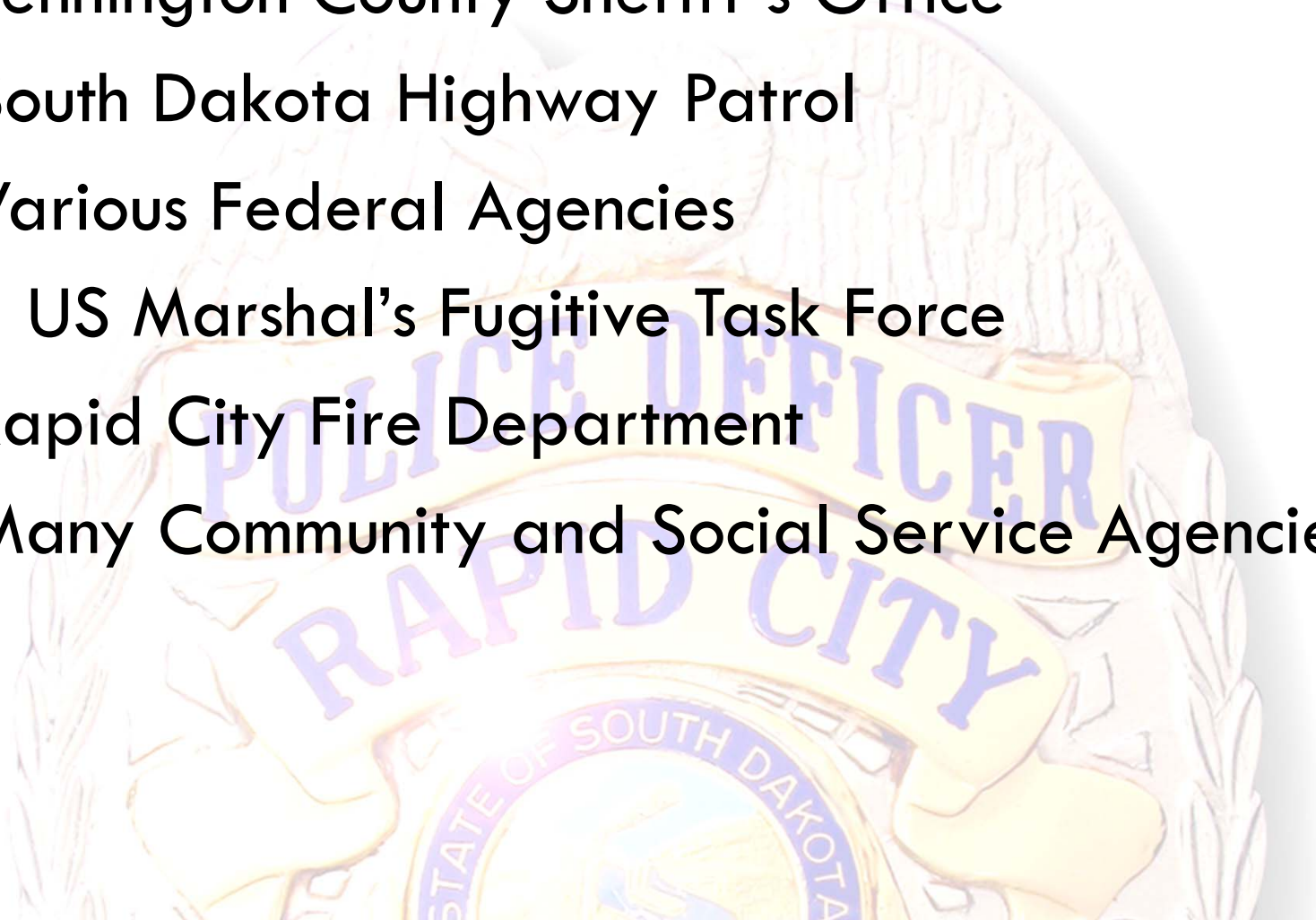


RAPID CITY POLICE DEPARTMENT

2014

Key Partnerships

- Pennington County Sheriff's Office
- South Dakota Highway Patrol
- Various Federal Agencies
 - US Marshal's Fugitive Task Force
- Rapid City Fire Department
- Many Community and Social Service Agencies



Questions?

Community

personal and professional commitment

We will commit to the community and work together to achieve a safe and healthy quality of life.

Service

above and beyond the call

We will utilize our resources in an effective, efficient manner to achieve a safe environment for residents and visitors.

Integrity

begins at home

We will prepare and equip our members through training, education, and both personal and professional development to safeguard themselves, to be accountable to the citizens they serve and to make sound, ethical decisions.

