

03-4-4-13 P:\12-134\AutoCAD\PlanSheets\C2\ESC.dwg

LEGEND

	EXISTING FLOW DIRECTION
	SEDIMENT CONTROL WATTLE
	INLET PROTECTION DEVICE
	INLET PROTECTION
	TEMPORARY SEDIMENT TRAP
	VEHICLE TRACKING CONTROL
	CONCRETE WASHOUT AREA
	EROSION CONTROL BLANKET

NOTE:

THE INTENT OF THIS EROSION CONTROL LAYOUT IS TO PROVIDE GUIDANCE FOR SWPPP PREPARATION AND TO AID IN THE PROCESS OF OBTAINING THE NECESSARY CONSTRUCTION PERMITS. THE CONTRACTOR IS RESPONSIBLE FOR THE MEANS AND METHODS REQUIRED FOR IMPLEMENTING ANY AND ALL CONSTRUCTION ACTIVITIES TO BE IN COMPLIANCE WITH THE SWPPP AND ASSOCIATED PERMITS.

415 PARKVIEW DR
2 LESS LOT H1, LOT H2,
H3 & ROW, BLOCK 11,
ROBBINSDALE #10,
SECTION 13, T1N, R7E
JOHN D. ENGER

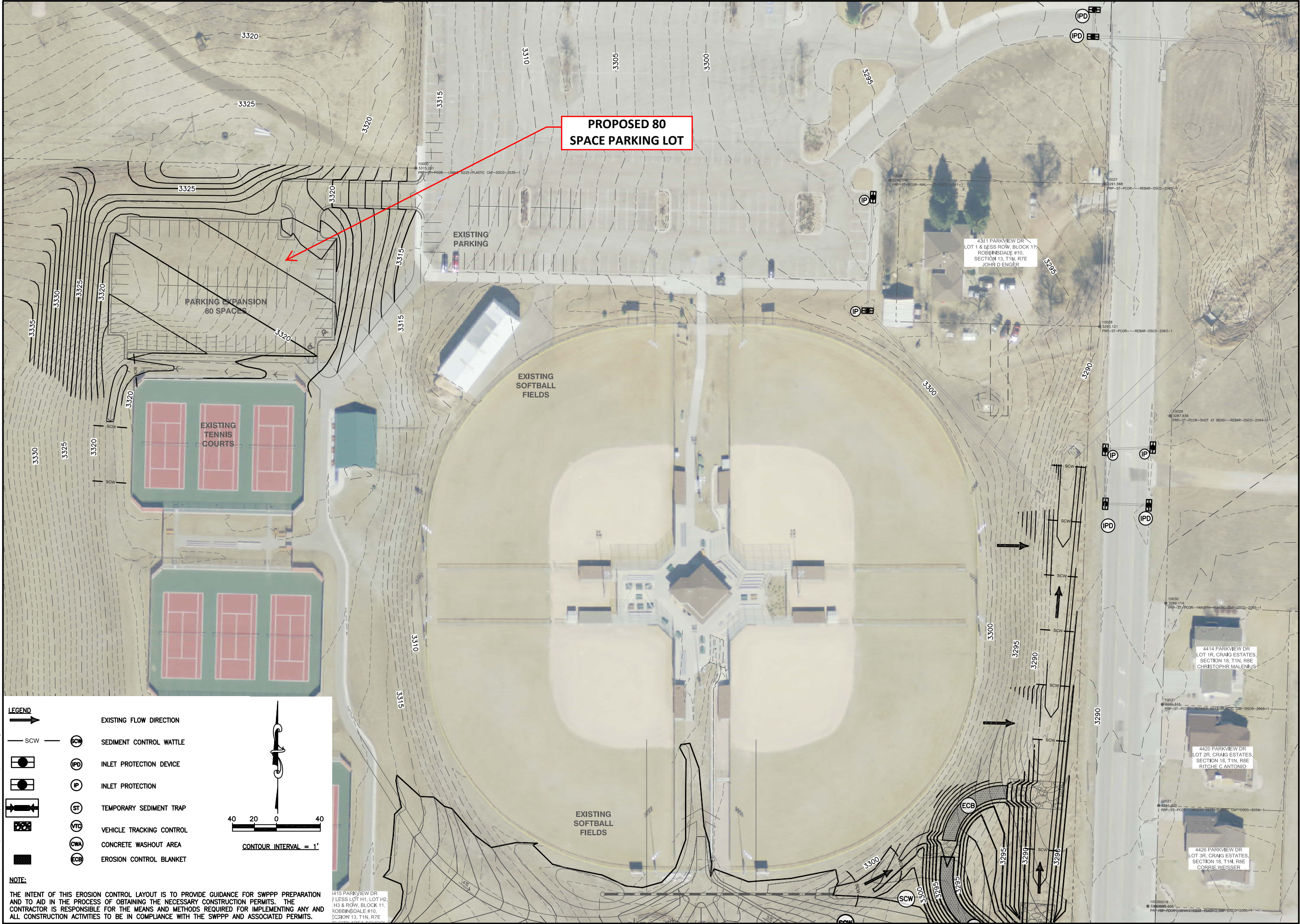
4414 PARKVIEW DR
LOT 1R, CRAIG ESTATES,
SECTION 18, T1N, R8E
CHRISTOPHER MALENIUS

4420 PARKVIEW DR
LOT 2R, CRAIG ESTATES,
SECTION 18, T1N, R8E
RICHIE C. ANTONIO

4426 PARKVIEW DR
LOT 3R, CRAIG ESTATES,
SECTION 18, T1N, R8E
CORRIE WEISSER

40 20 0 40

CONTOUR INTERVAL = 1'



526 Saint Joseph St.
Suite B
Rapid City, SD 57701
Tele: 605/394-0394
Fax: 605/394-9588

NOT FOR CONSTRUCTION

EROSION AND SEDIMENT CONTROL LAYOUT
ASA SOFTBALL - PARKVIEW ADDITION
RAPID CITY, SOUTH DAKOTA

Project No.:
R12-386

Drawn By:
JDM/BDH

Checked By:
DMM

Date:
03/04/13

Revisions:

This drawing is provided as an instrument of service by Designworks, Inc. and is intended for use on this project only. Any reproduction, use, or disclosure of information contained herein without the prior written consent of Designworks, Inc. is strictly prohibited. © copyright 2013 by Designworks, Incorporated.

C2.3