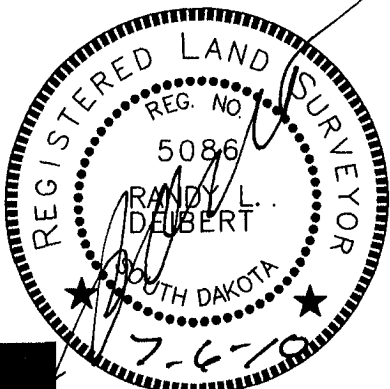
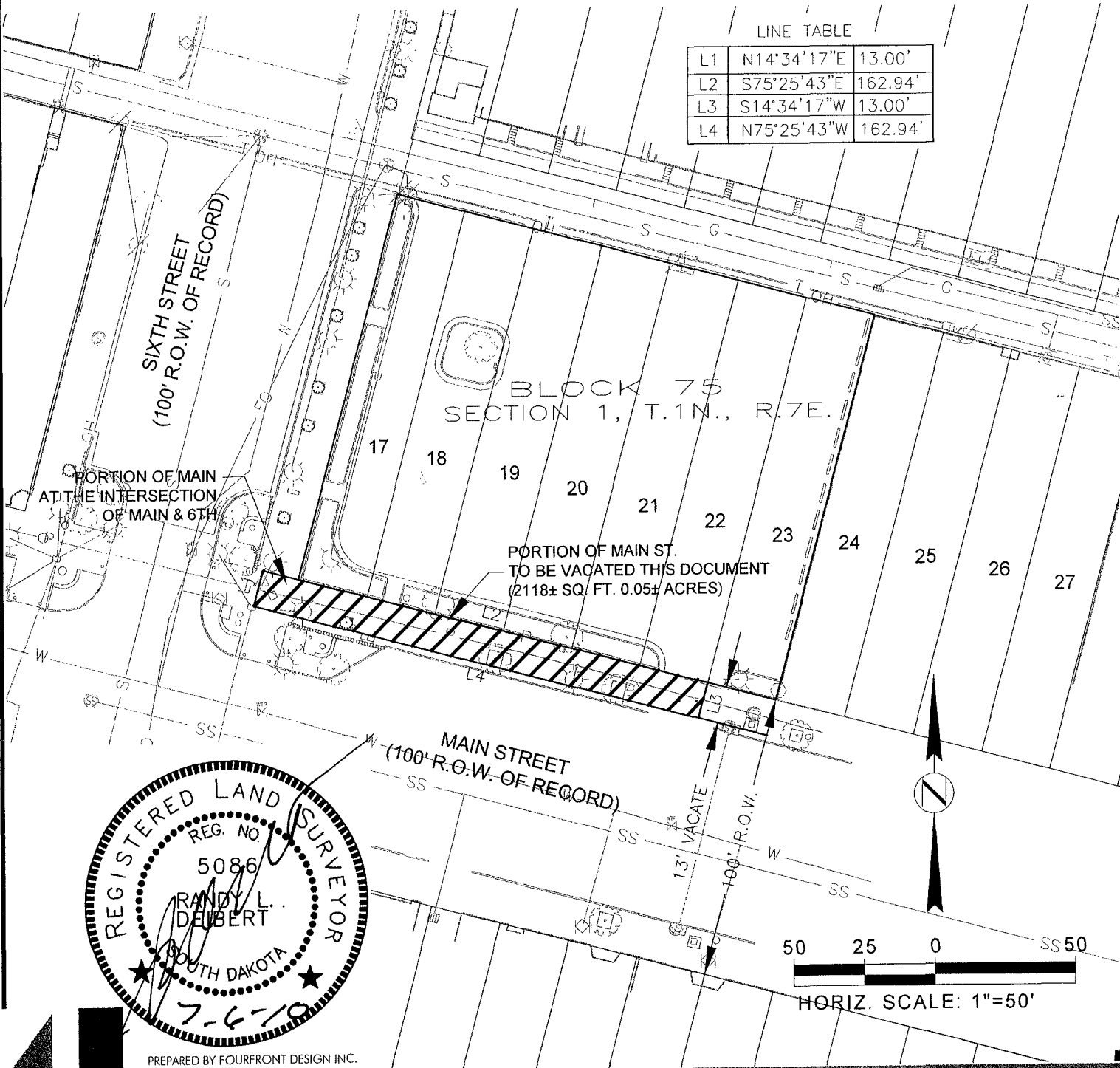


A VACATION OF THAT PORTION OF MAIN STREET ADJACENT TO LOTS 17-22 OF BLOCK 75, AND A PORTION OF MAIN STREET AT THE INTERSECTION OF 6TH STREET AND MAIN STREET, OF ORIGINAL TOWN OF RAPID CITY

LOCATED IN THE NW1/4 OF THE NW1/4 SECTION 1, T.1N., R.7E. BHM RAPID CITY, PENNINGTON COUNTY, SOUTH DAKOTA

LINE TABLE

L1	N14°34'17"E	13.00'
L2	S75°25'43"E	162.94'
L3	S14°34'17"W	13.00'
L4	N75°25'43"W	162.94'



PREPARED BY FOURFRONT DESIGN INC.

517 7th street rapid city sd 57701
ph: 605.342.9470 fax: 605.342.2377
www.4front.biz

ARCHITECTURE | ENGINEERING
GIS | SURVEYING

FOURFRONT
DESIGN INC.

EXHIBIT A
MAIN STREET SQUARE

JOB NUMBER: 09.1592.S01 PROJECT LOCATION

DATE: 07/06/10

SHEET TITLE:
VACATION
OF R.O.W.

SHEET
1