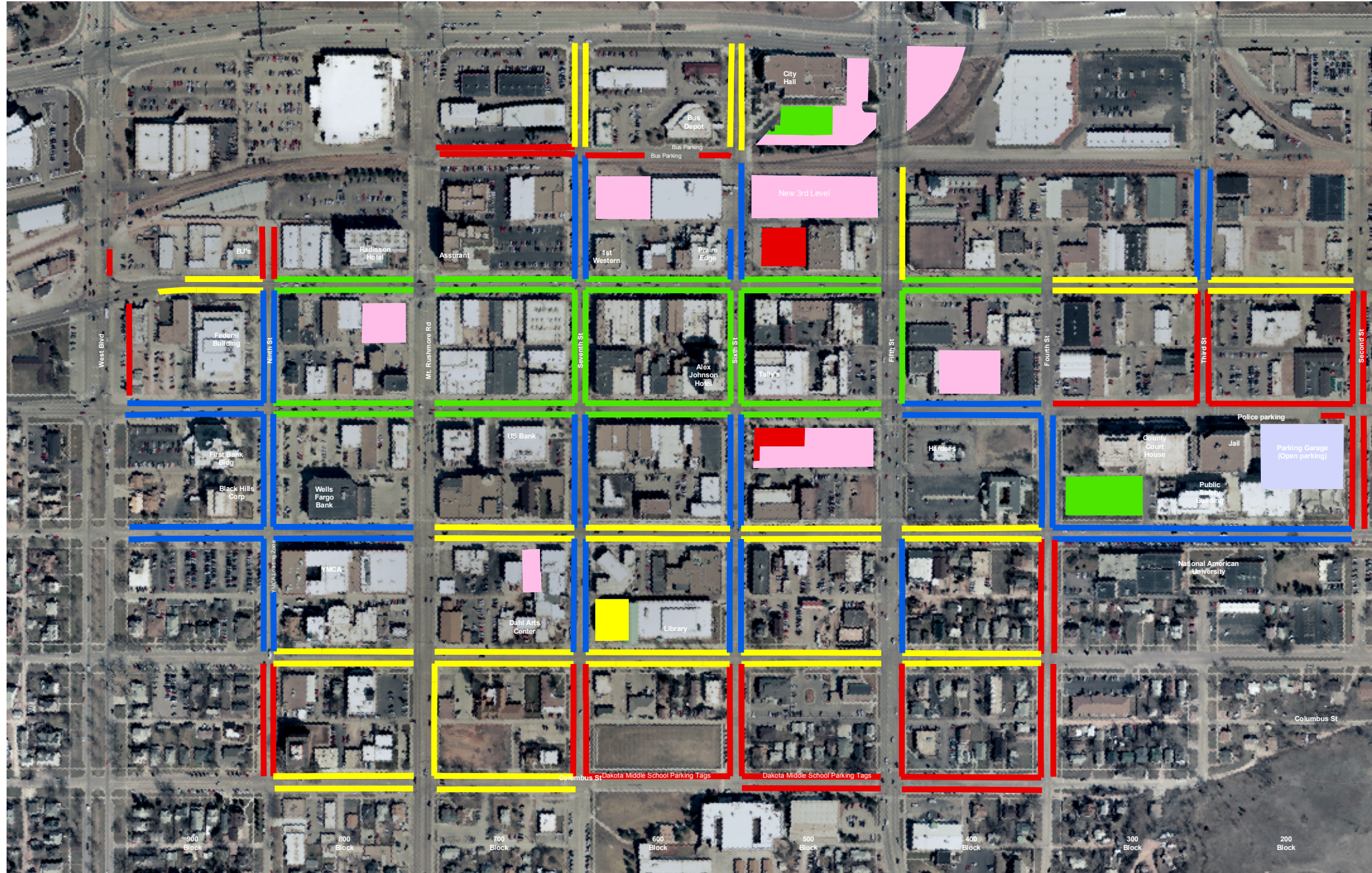


Downtown Public Parking Plan

As Approved By Downtown Parking Committee 1/5/2009

WEST BLVD 9TH ST MT RUSHMORE RD 7TH ST 6TH ST 5TH ST 4TH ST 3RD ST 2ND ST



RAPID / APOLDA ST

MAIN ST

SAINT JOSEPH ST

KANSAS CITY ST

QUINCY ST

COLUMBUS ST



Legend

- 2 HOUR NON-METERED
- 2 HOUR METERS
- 4 HOUR METERS
- 10 HOUR METERS
- LEASED PARKING
- PARKING GARAGE