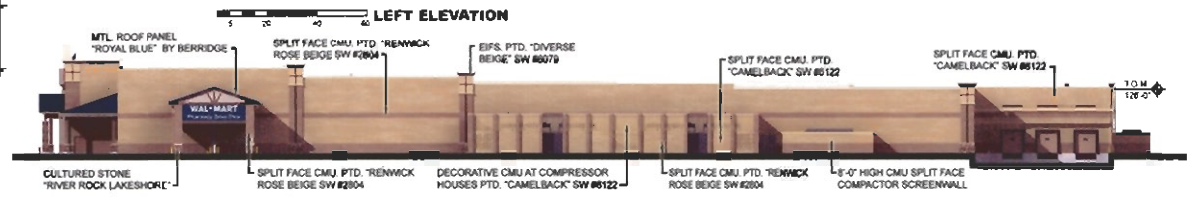


FRONT SIGNAGE	HEIGHT	AREA
1. WAL-MART	2'-0"	120.00 S.F.
2. 'SUPERCENTER'	2'-0"	39.00 S.F.
3. 'ALWAYS (2)'	8'-0"	261.28 S.F.
4. 'FOOD CENTER'	2'-0"	50.42 S.F.
5. 'LOW PRICES'	2'-0"	44.38 S.F.
6. 'BAKERY'	1'-0"	10.25 S.F.
7. 'TOUL'	1'-0"	5.30 S.F.
8. 'MEAT'	1'-0"	6.84 S.F.
9. 'PRODUCE'	1'-0"	11.88 S.F.
10. '1 HR. PHOTO'	1'-0"	18.50 S.F.
11. 'OPTICAL'	1'-0"	10.26 S.F.
12. 'PHARMACY'	1'-0"	14.56 S.F.
13. 'WE SELL FOR LESS'	2'-0"	69.23 S.F.
14. 'TIRE & LUBE'	2'-0"	47.71 S.F.
15. 'EXPRESS ***'	2'-0"	45.77 S.F.
16. 'GARDEN CENTER'	2'-0"	59.89 S.F.
17. Future Food Tenant	2'-0"	20.00 S.F.
17. Future Automobile Inlet	2'-0"	20.00 S.F.
TOTAL FRONT		692.39 S.F.

PHARMACY SIGNAGE	HEIGHT	AREA
18. WAL-MART	2'-0"	42.22 S.F.
19. 'PHARMACY DRIVE-THRU (2)'	1'-0"	82.00 S.F.
20. 'EXIT'	1'-0"	2.42 S.F.
21. 'DIVERSE'	1'-0"	3.28 S.F.
TOTAL PHARMACY		131.87 S.F.

AUTO CENTER SIGNAGE	HEIGHT	AREA
22. WAL-MART	1'-0"	11.12 S.F.
'TIRE & LUBE'	1'-0"	26.20 S.F.
'EXPRESS'	2'-0"	24.88 S.F.
23. 'TIRES (2)'	1'-0"	6.52 S.F.
24. 'LUBE EXPRESS (1)'	1'-0"	8.88 S.F.
TOTAL AUTO CENTER		82.48 S.F.



REPRESENTATION ONLY
NOT FOR CONSTRUCTION

Building images shown are a representation of the design intent and may not reflect any subtle variations in color, material or construction that may occur due to local material differences and final design detailing.

RECEIVED
WAL-MART
SUPERCENTER
DEC 19 2005

Rapid City (S), SD
#3872 12/19/05

Rapid City Growth
Management Department

DEC 21 2005

Rapid City Growth
Management Department

