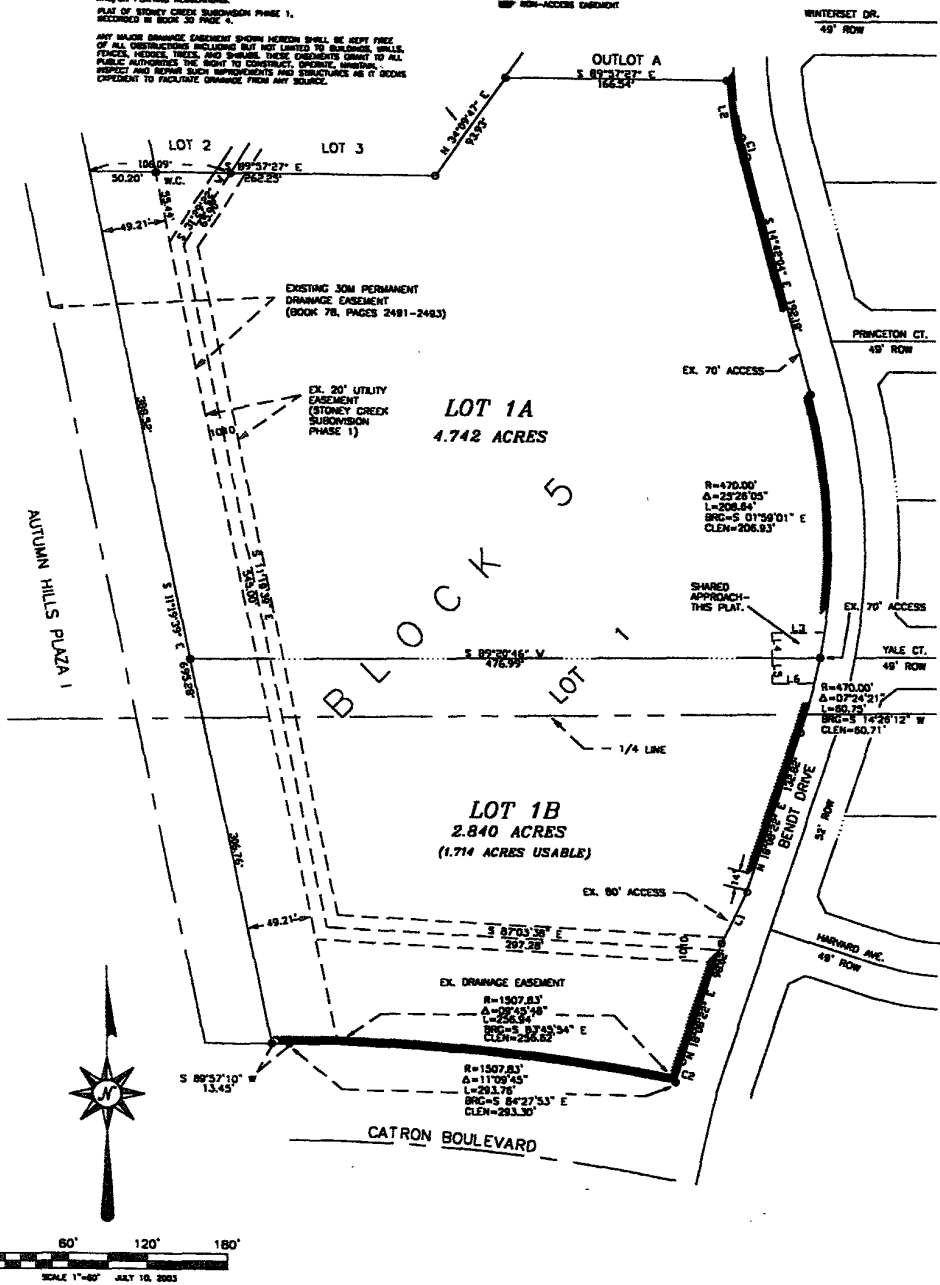


PLAT OF LOT 1A AND LOT 1B, BLOCK 5 OF STONEY CREEK SUBDIVISION PHASE 1, FORMERLY LOT 1, BLOCK 5 OF STONEY CREEK SUBDIVISION PHASE 1, LOCATED IN THE SW1/4NW1/4 AND THE NW1/4SW1/4 OF SECTION 22, T1N, R7E, BHM, RAPID CITY, PENNINGTON COUNTY, SOUTH DAKOTA.

NOTE:
 BEARING FOR PREVIOUSLY RECORDED PLAT.
 UTILITY AND EASEMENT EASEMENTS IF ON THE INTERIOR SIDE OF ALL LOT LINES.
 BUILDING SETBACKS REQUIREMENTS ARE AS STATED IN THE ZONING AND/OR PLATING REGULATIONS.

- SET REBAR & CMP STAMPED
- ARLETH & ASSOC. L53877.
- FOUND REBAR & CMP STAMPED
- ARLETH & ASSOC. L53877.
- NEW NON-ACCESS EASEMENT

PLAT OF STONEY CREEK SUBDIVISION PHASE 1, RECORDED IN BOOK 30 PAGE 4.
 ANY MAJOR DRAINAGE EASEMENT SHOWN HEREON SHALL BE KEPT FREE OF ALL OBSTRUCTIONS INCLUDING BUT NOT LIMITED TO BUILDINGS, WALLS, FENCES, HEDGES, TREES, AND SHRUBS. THESE CONDITIONS GRANT TO ALL PUBLIC AUTHORITIES THE RIGHT TO CONSTRUCT, OPERATE, MAINTAIN, REPAIR AND REMOVE SUCH IMPROVEMENTS AND STRUCTURES AS IT DEEMS EXPEDIENT TO FACILITATE DRAINAGE FROM ANY SOURCE.



LINE	BEARING	DISTANCE
L1	N 23°32'25" E	44.36'
L2	N 15°09'25" W	46.69'
L3	S 89°20'48" E	43.00'
L4	S 00°39'14" E	20.00'
L5	S 00°39'14" E	20.00'
L6	N 89°20'48" E	31.94'

CURVE	RADIUS	DELTA ANGLE	ARC LENGTH	CHORD BEARING	CHORD LEN
C1	328.00'	02°44'08"	15.56'	S 1°20'00" E	15.56'
C2	332.00'	02°30'21"	18.93'	N 18°40'42" E	18.93'

PREPARED FOR:
 DREAM DESIGN INTERNATIONAL, INC.
 528 KANSAS CITY STREET SUITE 4
 RAPID CITY, SD 57701
 (605) 348-0538