

4-52-77

LOT 8 25355  
LOT 7 25354  
LOT 4-6 25352

Parcel No. 22

### PLAT OF LOTS H2

When a parcel of land is to be divided for highway purposes  
Lots 4, 5, 6, 7, 8 and 10, Less Lots H1, of Block 9 of Mallow's Addition  
To the City of Rapid City  
By subdivision of Project M 1922610  
PENNINGTON COUNTY, SOUTH DAKOTA  
Scale 1" = 100'

**LEGEND:**  
● = found corner  
○ = found corner (not used)  
□ = set corner  
All monumentation will be set upon project completion

**RAPID CITY**

**MALLOW'S ADDITION**

LOT 1, LOT 2, LOT 3, LOT 4, LOT 5, LOT 6, LOT 7, LOT 8, LOT 9, LOT 10

Rowland Street, Silver Street, First Street, Grand Avenue, 5th Street

Line	Bearing	Length
L1	N57° 36' 25"E	5.68
L2	S32° 07' 11"E	25.00
L3	S32° 07' 11"E	25.00
L4	S32° 07' 11"E	3.90
L5	S20° 59' 45"W	35.22
L6	S20° 59' 45"W	42.36
L7	S20° 59' 45"W	42.36
L8	S20° 59' 45"W	42.15
L9	S20° 59' 45"W	12.66
L10	N32° 07' 11"W	7.70
L11	N32° 07' 11"W	25.00
L12	N32° 07' 11"W	9.40
L13	N18° 27' 03"E	37.74
L14	N15° 34' 29"E	37.69
L15	N14° 42' 34"E	36.78
L16	N15° 51' 42"E	36.25
L17	N13° 01' 32"E	35.95
L18	S57° 33' 27"W	36.06
L19	S57° 30' 29"W	57.03
L20	S57° 27' 19"W	26.69
L21	S57° 22' 19"W	49.68
L22	S57° 20' 19"W	44.10
L23	S57° 22' 19"W	10.38
L24	N30° 07' 11"W	75.00

Lot H2 - Lot 4 containing 458 sq ft or 0.01 ac. more or less  
Lot H2 - Lot 5 containing 1101 sq ft or 0.03 ac. more or less  
Lot H2 - Lot 6 containing 1458 sq ft or 0.03 ac. more or less  
Lot H2 - Lot 7 containing 374 sq ft or 0.008 ac. more or less  
Lot H2 - Lot 8 containing 1184 sq ft or 0.03 ac. more or less  
Lot H2 - Lot 9 containing 581 sq ft or 0.02 ac. more or less  
Lot H2 - Lot 10 containing 49 sq ft more or less

Note: The coordinates, distances and areas shown on this plat are based on the Rapid City State Plane Coordinate System, South Zone, NAD 83, 57° 0' 89.7664461

The State of South Dakota, acting by and through the Department of Transportation and its State Transportation Commissioner, owner of lots 4, 5, 6, 7, 8 and 10, areas 101 of Block 9 of Mallow's Addition as shown above, do hereby certify and approve the survey and plat of land as represented and shown on the above plat and the same is represented and designated as Lot H2 containing 0.14 acres, more or less, as shown and represented by said survey and plat to hereby intended for and dedicated to the public as a public highway.

Witness my hand and seal on this 20th day of August, 2015.

State of South Dakota  
Acting by and through the Department of Transportation  
and its State Transportation Commissioner  
*Richard Upgott*  
SECRETARY, SOUTH DAKOTA DEPARTMENT OF TRANSPORTATION

REG. NO. 8014  
BRIAN J. JENSEN  
REGISTERED PROFESSIONAL LAND SURVEYOR FOR PENNINGTON COUNTY, SOUTH DAKOTA  
7-30-15

Doc# 2022610, A/E  
Drawing created by HGP Engineering  
Rapid City, South Dakota  
Drawn by Richard Upgott Date 1/29/2015  
Checked by Brian Jensen Date 1/29/2015

#### SURVEYOR'S CERTIFICATE

BRIAN JENSEN Registered Land Surveyor in and for the State of South Dakota do hereby certify that as ordered by the South Dakota Department of Transportation the parcel of land as shown on this plat has been surveyed at my direction and under my control and such parcel of land shall hereafter know by the corners designated herein. The location and area shown of the parcel are shown on this plat.

In witness whereof, I have set my hand and seal this 20th day of August, 2015.

*Brian Jensen*  
Registered Professional Land Surveyor  
Registration No. 8014

#### OFFICE OF REGISTER OF DEEDS

State of South Dakota  
County of Pennington  
Filed for recording this 20th day of August, 2015 at 8:43 AM and recorded in Book of Plats  
Register of Deeds

DOC# AD1510535 Page 1

1162

6246 sq. ft.

8/15/15  
- 1/1/15  
206 DAYS

4-52-73

37599

Parcel N

### PLAT OF LOT H1

Showing a parcel of land to be dedicated to highway purposes  
 Lot R0301-B of Block 1, North Boulevard Addition to the City of Rapid City  
 PENNINGTON COUNTY, SOUTH DAKOTA  
 Scale 1" = 100'

**LEGEND**  
 ● = found corner  
 (n) ● = found corner (not used)  
 ○ = set corner  
 All monumentation will be set upon project completion

**Table of Lot H1 Boundaries:**

Line	Bearing	Length	Chord	Radius
L1	N75° 17' 07"W	45.28		
L2	S14° 42' 53"W	204.92		
L3	S21° 15' 15"W	209.91	209.88	2849.17R
L4	N75° 17' 07"W	45.73		

**Note 1:** The coordinates, distances and areas shown on this plan are based on the South Dakota State Plane coordinate System - South Zone NAD 83/98, SP = 2 9967895401

The State of South Dakota, Acting by and through the Department of Transportation and its State Transportation Commission (owner of Lot R0301-B of Block 1 of North Boulevard Addition) as shown above, hereby conveys and appoves the survey and plat of land as represented and shown on the above plat, and the land thereon represented and designated as Lot H1 containing 4,369 sq ft or 0.10 ac more or less, as shown and represented, to said survey and plat, is hereby intended for and dedicated to the public for a public highway.

Witness my hand and seal on this 25th day of July, 2015

State of South Dakota  
 Acting by and through the Department of Transportation and its State Transportation Commission

**REGISTERED PROFESSIONAL SURVEYOR**  
 SOUTH DAKOTA  
 BRIAN J. JENSEN  
 3-25-15

**REGISTERED AS:**  
 Drawing prepared by: HJR Engineering  
 Rapid City, South Dakota  
 Drawn by: Brian Jensen Date: 07/21/15  
 Checked by: Brian Jensen Date: 07/21/15

---

**SURVEYOR'S CERTIFICATE**

I, BRIAN J. JENSEN, Registered Land Surveyor in and for the State of South Dakota, do hereby certify that as ordered by the South Dakota Department of Transportation the parcel of land as shown on this plat has been surveyed at my direction and under my control, and such portion of a plat shall be hereafter shown by the following designated herein. The location and dimensions of the parcel are shown on this plat.

In witness whereof, I have set my hand and seal on this 25th day of July, A.D. 2015

---

**OFFICE OF REGISTER OF DEEDS**

State of South Dakota  
 County of Pennington ss  
 Filed for record the 20 day of July, A.D. 2015 at 9:29 AM and recorded in Books of Deeds ADDISORSA1 on page

DOC#

1162      Register of Deeds      County

7/15/15  
11/1/15  
195 DAYS

LOT 1 37597  
 LOT 2 37598

Parcel No. 44

## PLAT OF LOTS H1

Showing a parcel of land to be dedicated for highway purposes in  
 Lot 1 and Lot 2 of Lot RU301-A of Block 1, North Boulevard Addition to the City of Rapid City  
 for construction of Project FM 1902(1)0  
 PENNINGTON COUNTY, SOUTH DAKOTA  
 Scale: 1 inch = 100 feet

**LEGEND**

- = found Corner
- (n) ● = found corner (not used)
- = set corner

All monumentation will be set upon project completion

	Bearing	Length	Chord	Radius
L1	S75° 17' 59"E	131.70		
L2	S14° 42' 53"W	137.21		
L3	S14° 42' 53"W	137.45		
L4	N75° 17' 07"W	45.28		
C1	N1° 17' 30"W	142.76	142.74	2849.17R
C2	N4° 11' 16"W	145.27	145.25	2849.17R
L5	S75° 26' 51"E	84.64		
L6	N75° 17' 07"W	136.70		
L7	N14° 40' 52"E	137.06		
L8	N14° 40' 52"E	137.57		
L9	S75° 17' 59"E	136.87		
L10	S75° 26' 51"E	52.14		
L11	N14° 44' 10"E	50.36		

**Note 1:** The coordinates, distances and areas shown on this plat are based on the South Dakota State Plane coordinate System - South Zone NAD 83/98 SF = 0.99978964601

The State of South Dakota, acting by and through the Department of Transportation and its State Transportation Commission owner of lots 1 and 2 of Block 1 of North Boulevard Addition as shown above, do hereby join in and approve the survey and plat of land as represented and shown on the above plat, and the land therein represented and designated as Lot H1 containing 0.54 acres, more or less, as shown and represented by said survey and plat, is hereby intended for and dedicated to the public for a public highway.

Witness my hand and seal on this 25 day of July 2015

State of South Dakota  
 Acting by and through the Department of Transportation and its State Transportation Commission.

*[Signature]*  
 SECRETARY, SOUTH DAKOTA DEPARTMENT OF TRANSPORTATION

Rev. 02/05/2015 AUF

Drawing prepared by H&R Engineering  
 Rapid City, South Dakota

Drawn By Richard Loggett Date 01/21/15  
 Checked By Brian Jensen Date 01/21/15

**SURVEYOR'S CERTIFICATE**

I, BRIAN J. JENSEN, Registered Land Surveyor, in and for the State of South Dakota, do hereby certify that as ordered by the South Dakota Department of Transportation the parcel of land as shown on this plat has been surveyed at my direction and under my control, and such parcel of land shall be hereafter known by the lot number designated herein. The location and dimensions of the parcel are shown on this plat.

In witness whereof, I have set my hand and seal this 25 day of January A.D. 2015

*[Signature]*  
 Registered Land Surveyor  
 Registration No. 5614

**OFFICE OF REGISTER OF DEEDS**

State of South Dakota  
 County of Pennington ss

Filed for record the 20 day of July A.D. 2015 at 9:19 A.M. and recorded in Books of Plats

DOC# AG01507556 of Page

1162

Register of Deeds by Deputy

4-52-70

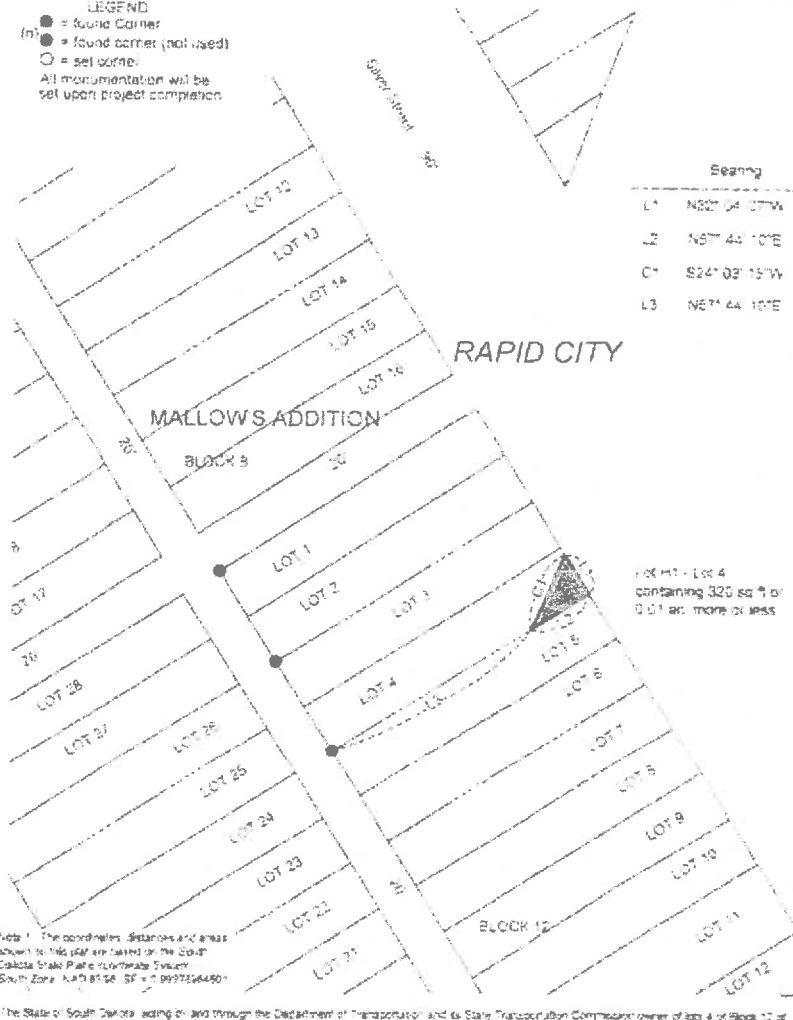
25367

Parcel 1

### PLAT OF LOTS H1

Showing a parcel of land to be dedicated for highway purposes -  
Lots 3 and 4 of Block 12 of Mallows Addition  
To the City of Rapid City  
In celebration of Project M 192314  
PENNINGTON COUNTY, SOUTH DAKOTA  
Scale: 1 inch = 50 feet

**LEGEND**  
● = found corner  
(m) ● = found corner (not used)  
○ = set corner  
All monumentation will be set upon project completion.



	Bearing	Length	Chord	Radius
L1	N50° 34' 07"W	21.94		
L2	S57° 44' 10"E	21.35		
C1	S24° 03' 15"W	37.77	37.77	544.00F
L3	N67° 44' 10"E	108.64		

LOT H1 - Lot 4  
containing 320 sq ft or  
0.01 ac. more or less

Note: The coordinates, distances and areas shown on this plat are based on the 2011 Dakota State Plane Coordinate System, South Zone, NAD 83, SR = 0.9997244450.

The State of South Dakota, acting through the Department of Transportation and its State Transportation Commission, owner of lots 4 of Block 12 of Mallows Addition as shown above, do hereby certify and approve the survey and plat of land as hereunto and shown on the above plat, and the land therein represented and designated as Lot H1 containing 0.01 acres, more or less, as shown and represented by said survey and plat as hereby warranted for and dedicated to the public for a public highway.

Witness my hand and seal on this 15th day of July, 2015.

State of South Dakota  
Acting by and through the Department of Transportation  
and its State Transportation Commission

*[Signature]*  
SECRETARY, SOUTH DAKOTA DEPARTMENT OF TRANSPORTATION

PL-10862015 A/E  
Drawing prepared by HEP Engineering  
Rapid City, South Dakota

Drawn by: Richard Lippert Date: 7/15/2015  
Checked by: Brian Jensen Date: 7/15/2015



### SURVEYOR'S CERTIFICATE

I, BRIAN JENSEN, Registered Land Surveyor, in and for the State of South Dakota, do hereby certify that as ordered by the South Dakota Department of Transportation the parcel of land as shown on the plat has been surveyed in its location and under its control, and said parcel of land shall be hereafter known as the lot number designated herein. The location and dimensions of the parcels are shown on the plat.

I witness whereof I have set my hand and seal on this

15th day of July, A.D. 2015

*[Signature]*  
Professional Land Surveyor  
Registration No. 25367

### OFFICE OF REGISTER OF DEEDS

State of South Dakota  
County of Pennington  
Filed for record this 20 day of July, A.D. 2015 at 9:29 A.M. and recorded in Book of Plats 200#  
No. ADD1509580 of Page 2

1162

Register of Deeds

by

Deputy

4-52-67

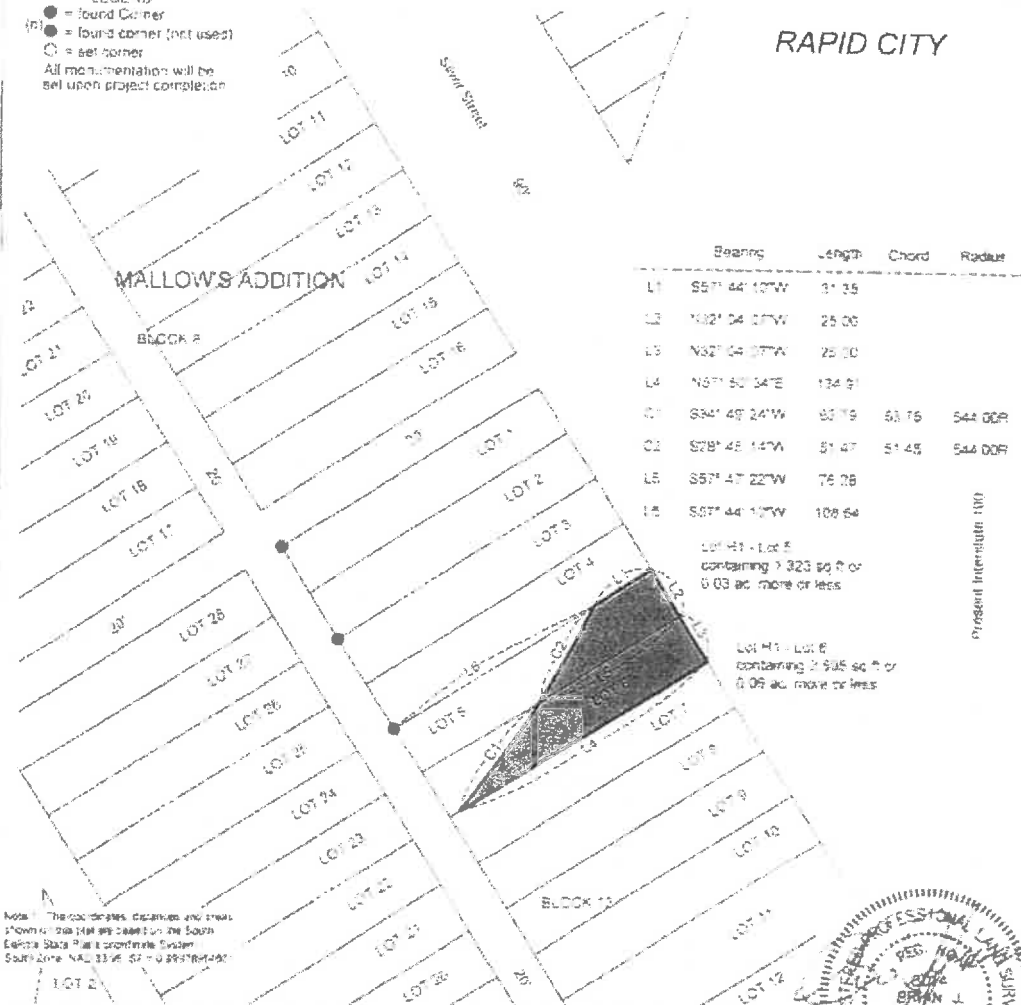
25368

Parcel: N

### PLAT OF LOTS H1

Showing a series of lots to be dedicated for highway purposes in  
Lots 5 and 6 of Block 12 of Mallows Addition  
to the City of Rapid City  
in accordance of Ordinance M 192218-0  
PENNINGTON COUNTY, SOUTH DAKOTA  
Scale: 1 inch = 50 feet

**LEGEND**  
● = found corner  
○ = found corner (not used)  
○ = set corner  
All measurements will be set upon project completion



RAPID CITY



LOT H1 - LOT 5  
containing 3,323 sq ft or  
0.03 ac. more or less

LOT H1 - LOT 6  
containing 2,945 sq ft or  
0.07 ac. more or less

Present Interstate 100

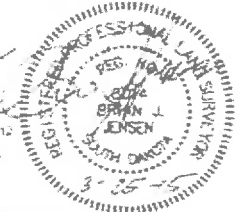
Note: The coordinates, distances and areas shown on this plat are based on the South Dakota State Plane Coordinate System. South Zone, NAD 83, at 49° 00' 00" West.

The State of South Dakota, acting by and through the Department of Transportation and its State Transportation Commission owner of lots 5 and 6 of Block 12 of Mallows Addition as shown above do hereby authorize and approve the survey and plat of lots as represented and shown on the above plat, and the land therein hereunto and designated as Lot H1 containing 0.03 acres, more or less, as shown and represented by said survey and plat as hereby intended to and dedicated to the public for a public right-of-way.

Witness my hand and seal of this 25th day of July 2015

Secretary, South Dakota Department of Transportation

Prepared by: BRUNN JENSEN  
Checked by: Brian Jensen  
Date: 01/21/15  
Date: 01/21/15



#### SURVEYOR'S CERTIFICATE

BRUNN JENSEN, Registered and Licensed Surveyor in and for the State of South Dakota, do hereby certify that as ordered by the South Dakota Department of Transportation the parcel of land as shown on this plat has been surveyed in the direction and under the control, and such details of land shall be hereunto shown by the lot number designated herein. The location and dimensions of the parcels are shown on this plat.

In witness whereof, I have set my hand and seal, this 25th day of July 2015.

#### OFFICE OF REGISTER OF DEEDS

State of South Dakota  
County of Pennington  
Filed for record this 20th day of July 2015 at 9:11 AM and recorded in Books of Plats 1162-1163 Page 1162

1162

Register of Deeds      Deputy

4-52-59

25369

Parcel E

### PLAT OF LOT H1

Showing a portion of and to be dedicated for highway purposes  
 Lot 7 in Block 12 of Mallow's Addition  
 To the City of Rapid City  
 by contribution of Fred W. Jensen  
 PENNINGTON COUNTY, SOUTH DAKOTA  
 Scale: 1 inch = 50 feet

**LEGEND**

- = found corner
- = found corner (not used)
- = set corner
- All monumentation will be set upon project completion

	Bearing	Length	Chord	Radius
L1	S67° 50' 34"W	134.91'		
L2	N32° 04' 07"W	25.00'		
L3	N57° 58' 46"E	145.00'		
L4	S32° 04' 07"E	25.00'		
L5	S32° 28' 00"W	5.40'	5.40'	544.00'
L6	S32° 04' 07"E	27.83'		

Lot H1 containing 1488 sq ft or .03 ac more or less

Note: All coordinates, distances and other shown on this plat are based on the South Dakota State Plane Coordinate System. South Zone. NAD 83-99. GRS 80. NAD 83 UTM Zone 14N.

The State of South Dakota, acting by and through the Department of Transportation and the State Transportation Commission, owner of lot 7 of Block 12 of Mallow's Addition in the City of Rapid City, as shown above, do hereby join in and approve the survey and plat of land as represented and shown on the above plat, and the land thereon is hereby dedicated to the public as a public highway.

Witness my hand and seal on this 12th day of July, 2015.

State of South Dakota  
 Acting by and through the Department of Transportation  
 and its State Transportation Commission

*[Signature]*  
 SECRETARY, SOUTH DAKOTA DEPARTMENT OF TRANSPORTATION

Rev. 02/05/2014 A/E  
 Drawing prepared by HQR Engineering  
 Rapid City, South Dakota  
 Drawn by Richard Lippert Date 01/21/15  
 Checked by Brian Jensen Date 01/21/15

### SURVEYOR'S CERTIFICATE

I, BRIAN JENSEN, Registered Land Surveyor, in and for the State of South Dakota, do hereby certify that as ordered by the South Dakota Department of Transportation the portion and as a portion of this plat has been surveyed with the precision and under the control and supervision of said department, and the location and dimensions of the parcels are shown on this plat.

In witness whereof, I have set my hand and seal on this 12th day of July, 2015.

*[Signature]*  
 Registered Land Surveyor  
 Registration # 8044

### OFFICE OF REGISTER OF DEEDS

State of South Dakota  
 County of Pennington  
 Filed for recording this 20th day of July, 2015, at 9:29 A.M. and recorded in Book of Plats AD01509587 of Page 2

Register of Deeds      14      Deeds

1162

4-52-59

25369

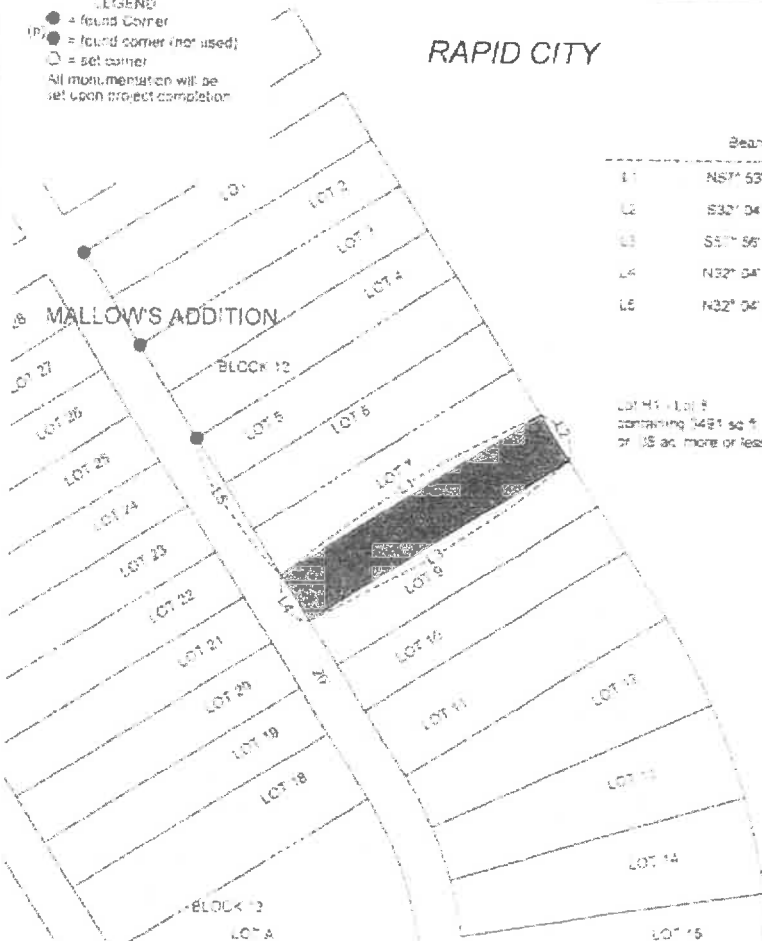
Parcel E

### PLAT OF LOT H1

Showing a parcel of land to be dedicated for highway purposes in  
Lots 8 in Block 12 of Mallow's Addition  
to the City of Rapid City  
in subdivision of Block 12  
PENNINGTON COUNTY, SOUTH DAKOTA  
Scale 1 inch = 50 feet

- LEGEND**
- = found corner
  - (P) ● = found corner (not used)
  - = set corner
- All monumentation will be set upon project completion

### RAPID CITY



	Bearing	Length
L1	N87° 53' 46"E	140.00
L2	S32° 04' 07"E	25.00
L3	S57° 56' 58"W	140.00
L4	N32° 04' 06"W	24.97
L5	N32° 04' 06"W	74.61

LOT H1 = Lot 8  
containing 0.08 ac. f.  
or 35 ac. more or less

Note: The coordinates, distances and areas shown on this plat are based on the South Dakota State Plane coordinate system - South Zone NAD 83 UTM 12Q UTM 5997056400

The State of South Dakota, acting by and through the Department of Transportation and its State Transportation Commission (herein as Lot 8 of Block 12 of Mallow's Addition to the City of Rapid City as shown above) do hereby join in and approve the survey and plat of land as represented and shown on the above plat into the land to be represented and designated as Lot H1 containing 0.08 acres, more or less, as shown and represented by said survey and plat, is hereby authorized to be dedicated to the public for a public highway.

Witness my hand and seal on this 12 day of August 2015

State of South Dakota  
Acting by and through the Department of Transportation  
and its State Transportation Commission

*[Signature]*  
SECRETARY OF THE SOUTH DAKOTA DEPARTMENT OF TRANSPORTATION



Drawing prepared by MCR Engineering  
Rapid City, South Dakota

Drawn By Richard Jensen Date 08/13/15  
Checked By Brian Jensen Date 08/13/15

### SURVEYOR'S CERTIFICATE

I, BRIAN J. JENSEN, Registered Land Surveyor in and for the State of South Dakota, do hereby certify that as ordered by the South Dakota Department of Transportation the parcel of land as shown on this plat has been surveyed at my direction and under my control, and such parcel of land shall hereafter known by the lot number designated herein. The location and dimensions of the parcel are shown on this plat.

In witness whereof, I have set my hand and seal this

12 day of August A.D. 2015

*[Signature]*  
Registered Professional Land Surveyor  
Registration No. 8014

### OFFICE OF REGISTER OF DEEDS

State of South Dakota  
County of Pennington  
Filed to Record the 28 day of August A.D. 2015 = 839A and recorded in Block of this AGG151107 of Page

1162

Register of Deeds

by

Deputy

BLK A LESS LOT 1

35596

LOT 33B

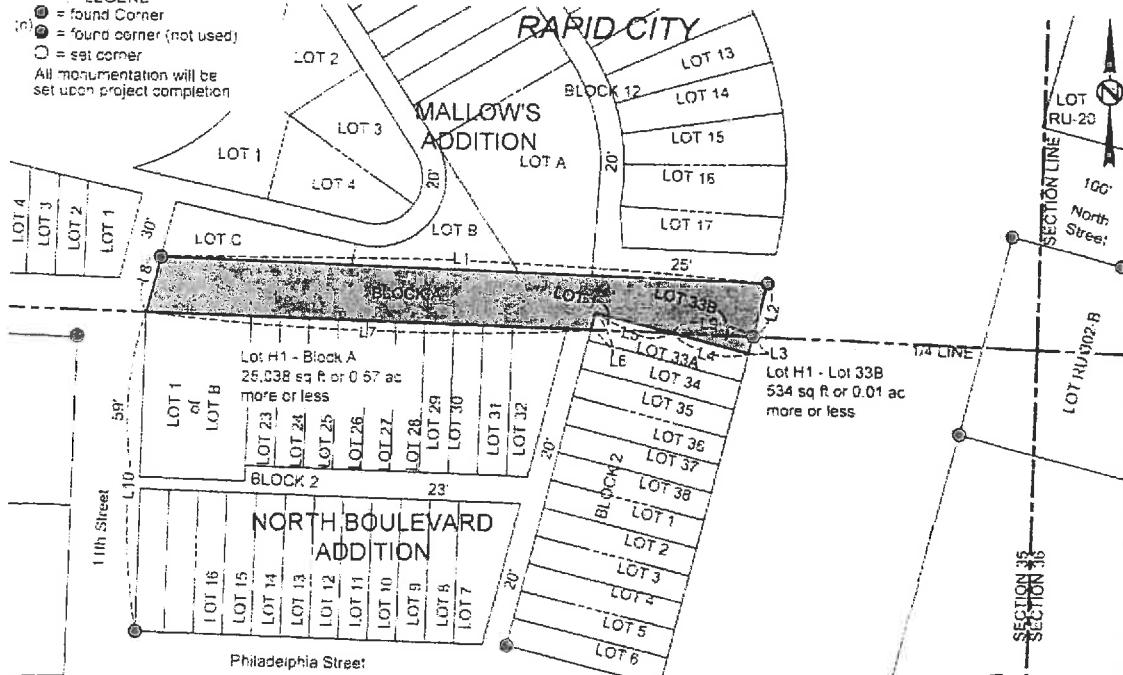
26560

Parcel No 5

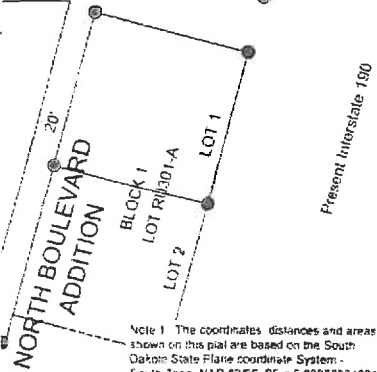
# PLAT OF LOTS H1

Showing a parcel of land to be dedicated for highway purposes in  
 Lot 33B of Lot 33 of Block 2 North Boulevard Addition to the City of Rapid City and  
 Block A Less Lot 1 of Block A of Government Lot 1 of Section 35 Township 2 North - Range 7 East of the Black Hills Meridian  
 for construction of Project IM 1902(61)3  
 PENNINGTON COUNTY, SOUTH DAKOTA  
 Scale: 1 inch = 100 feet

**LEGEND**  
 ● = found corner  
 (●) = found corner (not used)  
 ○ = set corner  
 All monumentation will be set upon project completion



Line	Bearing	Length
L1	S87° 54' 47" E	522.85
L2	S14° 35' 47" W	49.76
L3	S14° 35' 47" W	15.65
L4	N75° 03' 00" W	66.22
L5	N75° 03' 00" W	68.61
L6	S14° 35' 47" W	15.74
L7	N87° 59' 14" W	362.80
L8	N14° 36' 36" E	50.45
L9	S87° 59' 14" E	69.90
L10	S1° 51' 53" W	277.92



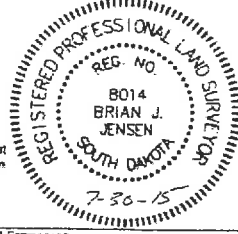
Note 1: The coordinates, distances and areas shown on this plat are based on the South Dakota State Plane coordinate System - South Zone NAD 83/96 SF = 0.99978964921

The State of South Dakota, acting by and through the Department of Transportation and its State Transportation Commission, owner of lot 33B of lot 33 of Block 2 of North Boulevard Addition and Block A Less Lot 1 of Block A of Government Lot 1 as shown above, do hereby join in and approve the survey and plat of land as represented and shown on the above plat, and the land therein represented and designated as Lot H1 containing 0.56 acres more or less, as shown and represented by said survey and plat, is hereby dedicated for and dedicated in the public for a public highway.

Witness my hand and seal on this 30 day of July A.D. 2015

Secretary, South Dakota Department of Transportation  
*[Signature]*

Revised: 07/27/15  
 Drawing prepared by HDR Engineering  
 Rapid City, South Dakota  
 Drawn By: Richard Liggitt Date: 07/27/15  
 Checked By: Brian Jensen Date: 07/27/15



## SURVEYOR'S CERTIFICATE

I, BRIAN J. JENSEN, Registered Land Surveyor in and for the State of South Dakota, do hereby certify that as ordered by the South Dakota Department of Transportation the parcel of land as shown on this plat has been surveyed at my direction and under my control, and such parcel of land shall be hereafter known by the lot number designated herein. The location and dimensions of the parcel are shown on this plat.

In witness whereof, I have set my hand and seal this 30 day of July A.D. 2015  
*[Signature]*  
 Registered Land Surveyor  
 Registration No. 8014

## OFFICE OF REGISTER OF DEEDS

State of South Dakota  
 County of Pennington  
 Filed for record the 30 day of August A.D. 2015 at 8:43 AM and recorded in Books of Plats Book ADDIS 10534 on Page 26560

1162

Register of Deeds by Deputy



4-52-35

LOT 33A

LOTS 34, 35

26559

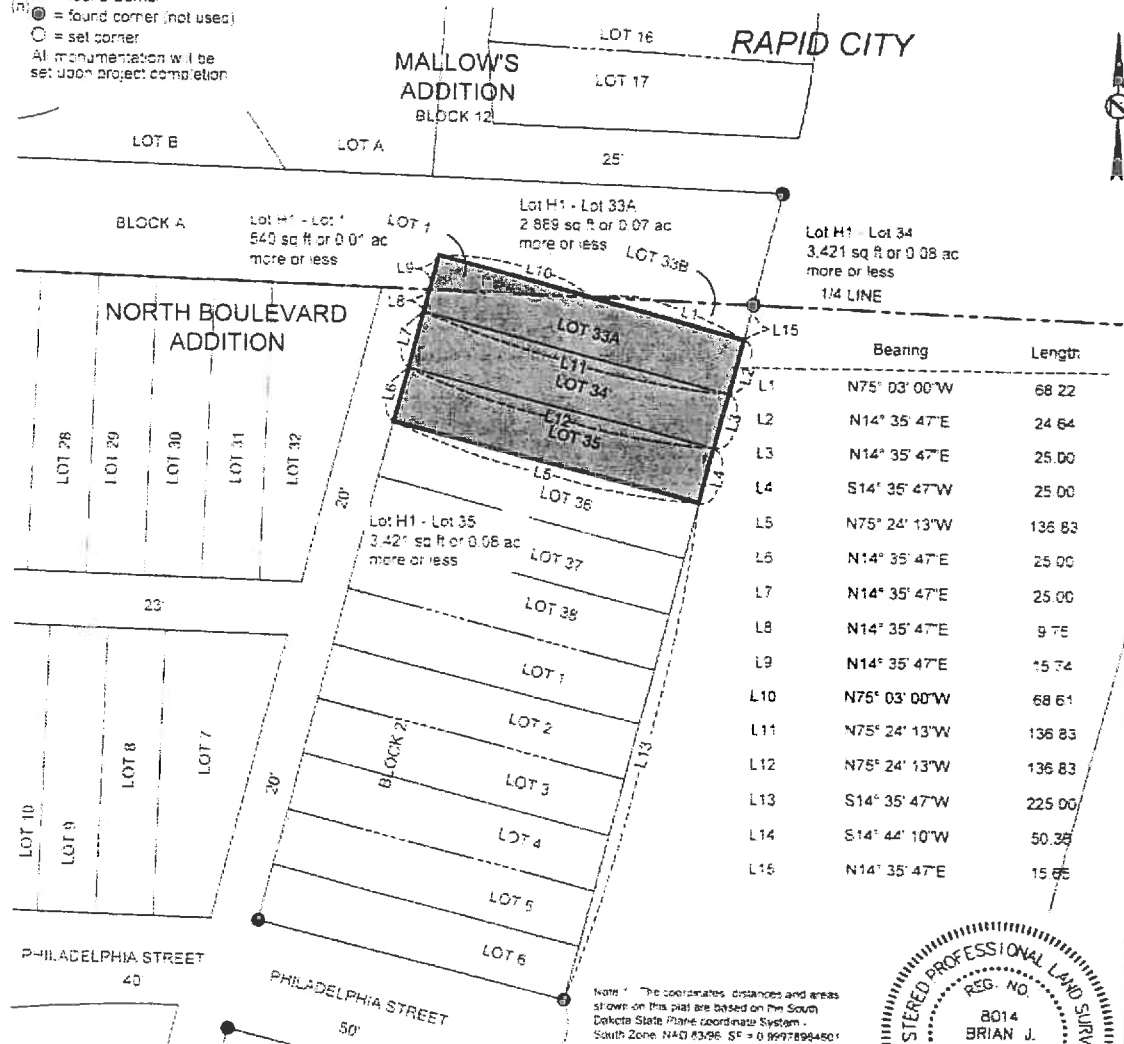
26561

Parcel No. C

# PLAT OF LOTS H1

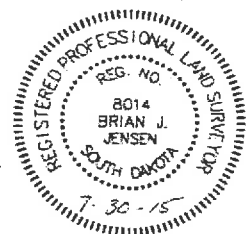
Showing a parcel of land to be dedicated for highway purposes in  
 Lots 23A of Lot 33, 34 and 35 in Block 2 of North Boulevard Addition To the City of Rapid City and Lot 1 of Block  
 A of Government Lot 1 of Section 35 Township 2 North - Range 7 East of the Black Hills Meridian  
 for construction of Project No. 13026110  
 PENNINGTON COUNTY, SOUTH DAKOTA  
 Scale: 1 inch = 50 feet

**LEGEND**  
 ● = found Corner  
 (●) = found corner (not used)  
 ○ = set corner  
 All monumentation will be set upon project completion



The State of South Dakota, acting by and through the Department of Transportation and its State Transportation Commission, owner of lot 33A of lot 33, lot 34 and 35 of Block 2 of North Boulevard Addition and Lot 1 of Block A of Government Lot 1 as shown above, do hereby join in and approve the survey and plat of an easement represented and shown on the above plat, and the easement represented and designated as Lot H1 containing 0.24 acres, more or less, as shown and represented by said survey and plat, to be dedicated for the use and benefit of the public for a public highway.

Witness my hand and seal on this 30 day of August 2015  
 State of South Dakota  
 Acting by and through the Department of Transportation  
 and its State Transportation Commission  
 Secretary South Dakota Department of Transportation



Revised: 07/27/15  
 Drawing prepared by HDR Engineering  
 Rapid City, South Dakota  
 Richard Liegett Date: 07/27/15  
 Brian Jensen Date: 07/27/15

## SURVEYOR'S CERTIFICATE

BRIAN J. JENSEN Registered Land Surveyor in and for the State of South Dakota, do hereby certify that as ordered by the South Dakota Department of Transportation on the parcel of land as shown on this plat has been surveyed by my direction and under my control, and such parcel of land shall be hereafter known by the lot number designated herein. The location and dimensions of the parcel are shown on this plat.  
 In witness whereof I have set my hand and seal, this 30 day of July A.D. 2015

## OFFICE OF REGISTER OF DEEDS

State of South Dakota  
 County of Pennington ss  
 Filed for record this 16 day of Aug A.D. 2015 at 8:43A and recorded in Books of Deeds Doc# A201510536 or Page  
 Register of Deeds by Deputy

4-52-66

26549

Parcel No. J

## PLAT OF LOTS H1

Showing a parcel of land to be dedicated for highway purposes in  
 Lots 1 and 2 in Block 2 of North Boulevard Addition  
 To the City of Rapid City  
 for construction of Project BM 1902(R-1)D  
 PENNINGTON COUNTY, SOUTH DAKOTA  
 Scale: 1 inch = 50 feet

**LEGEND**  
 (n) ⊙ = found Corner  
 ⊙ = found corner (not used)  
 ○ = set corner  
 All monumentation will be set upon project completion

	Bearing	Length
L1	S75° 24' 13"E	136.83
L2	S14° 35' 47"W	25.00
L3	S14° 35' 47"W	25.00
L4	N75° 24' 13"W	136.83
L5	N14° 35' 47"E	25.00
L6	N14° 35' 47"E	25.00
L7	N75° 24' 13"W	136.83
L8	S14° 35' 47"W	100.00
L9	S14° 44' 10"W	50.36
L10	N14° 35' 47"E	165.29

Lot H1 - Lot 1  
3,421 sq ft or 0.08 ac more or less

Lot H1 - Lot 2  
3,421 sq ft or 0.08 ac more or less

Present Interstate 190

TRACT TO LESS LOT H1

**Note 1:** The coordinates, distances and areas shown on this plat are based on the South Dakota State Plane coordinate System - South Zone NAD 83-95 SF = 0.99978984501

The State of South Dakota, acting by and through the Department of Transportation and its State Transportation Commission owner of lots 1 and 2 of Block 2 of North Boulevard Addition as shown above, do hereby join in and approve the survey and plat of land as represented and shown on the above plat; and the land therein represented and designated as Lot H1 containing 0.16 acres, more or less, as shown and represented by said survey and plat, is hereby intended for and dedicated to the public for a public highway.

Witness my hand and seal on this 7th day of July 2015

State of South Dakota  
 Acting by and through the Department of Transportation  
 and its State Transportation Commission.  
*D. Brugent*  
 SECRETARY, SOUTH DAKOTA DEPARTMENT OF TRANSPORTATION

Richard Liggett Date 04/28/15  
 Brian Jensen Date 04/28/15

**SURVEYOR'S CERTIFICATE**  
 I, BRIAN J. JENSEN, Registered Land Surveyor, in and for the State of South Dakota, do hereby certify that as ordered by the South Dakota Department of Transportation the parcel of land as shown on this plat has been surveyed at my direction and under my control, and such parcel of land shall be hereafter known by the lot number designated herein. The location and dimensions of the parcel are shown on this plat.

In witness whereof, I have set my hand and seal this 7 day of JULY A.D. 2015

*Brian Jensen*  
 Registered Land Surveyor  
 Registration No. 8014

**OFFICE OF REGISTER OF DEEDS**

State of South Dakota  
 County of Penn as  
 Filed for record the 13 day of July A.D. 2015 at 9:02 AM, and recorded in Books of Plats 201502951 on Page 1162

1162  
 Register of Deeds by Deputy

4-52-62

26551

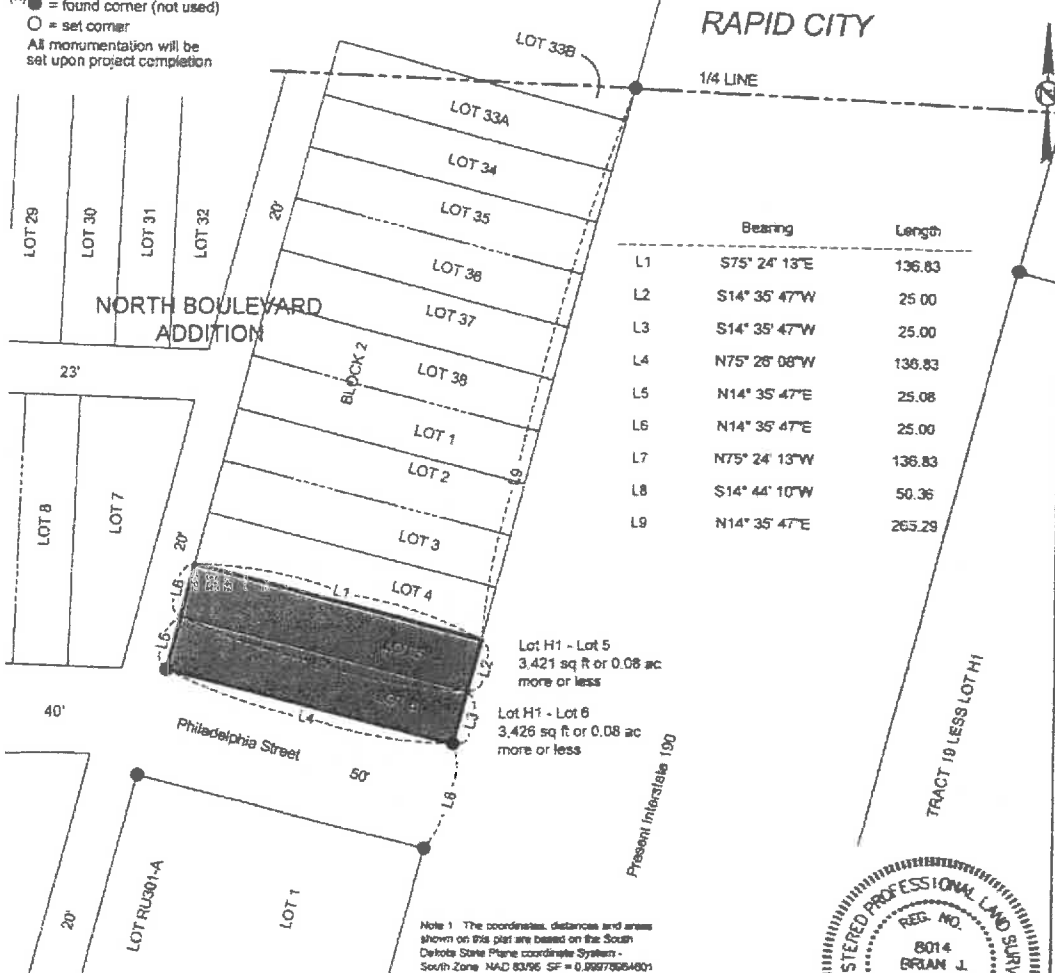
Parcel No. 1

# PLAT OF LOTS H1

Showing a parcel of land to be dedicated for highway purposes in  
Lots 5 and 6 in Block 2 of North Boulevard Addition  
To the City of Rapid City  
for construction of Project RM 19026-190  
PENNINGTON COUNTY, SOUTH DAKOTA

Scale: 1 inch = 50 feet

**LEGEND**  
 ● = found corner  
 (n) ● = found corner (not used)  
 ○ = set corner  
 All monumentation will be set upon project completion



Note 1: The coordinates, distances and areas shown on this plat are based on the South Dakota State Plane coordinate System - South Zone NAD 83/95 SF = 0.99970864801

The State of South Dakota, acting by and through the Department of Transportation and its State Transportation Commission owner of lots 5 and 6 of Block 2 of North Boulevard Addition as shown above, do hereby join in and approve this survey and plat of land as represented and shown on the above plat; and the land therein represented and designated as Lot H1 containing 0.16 acres, more or less, as shown and represented by said survey and plat, is hereby intended for and dedicated to the public for a public highway.

We ass our hand and seal on this 2nd day of July 2015

State of South Dakota  
 Acting by and through the Department of Transportation  
 and its State Transportation Commission

*[Signature]*  
 SECRETARY, SOUTH DAKOTA DEPARTMENT OF TRANSPORTATION



Richard J. Jensen Date: 04/28/15  
 Brian Jensen Date: 04/28/15

### SURVEYOR'S CERTIFICATE

I, BRIAN J. JENSEN, Registered Land Surveyor, in and for the State of South Dakota, do hereby certify that as ordered by the South Dakota Department of Transportation the parcel of land as shown on this plat has been surveyed at my direction and under my control, and such parcel of land shall be hereafter known by the lot number designated herein. The location and dimensions of the parcel are shown on this plat.

In witness whereof, I have set my hand and seal this

2 day of JULY A.D. 2015

*[Signature]*  
 Registered Land Surveyor  
 Registration No. 8014

### OFFICE OF REGISTER OF DEEDS

State of South Dakota  
 County of Pennington as  
 Filed for record the 13 day of July A.D. 2015 at 9:02A M., and recorded in Books of Plats AD1509250 on Page 1162

1162

Register of Deeds by Deputy

4-52-60

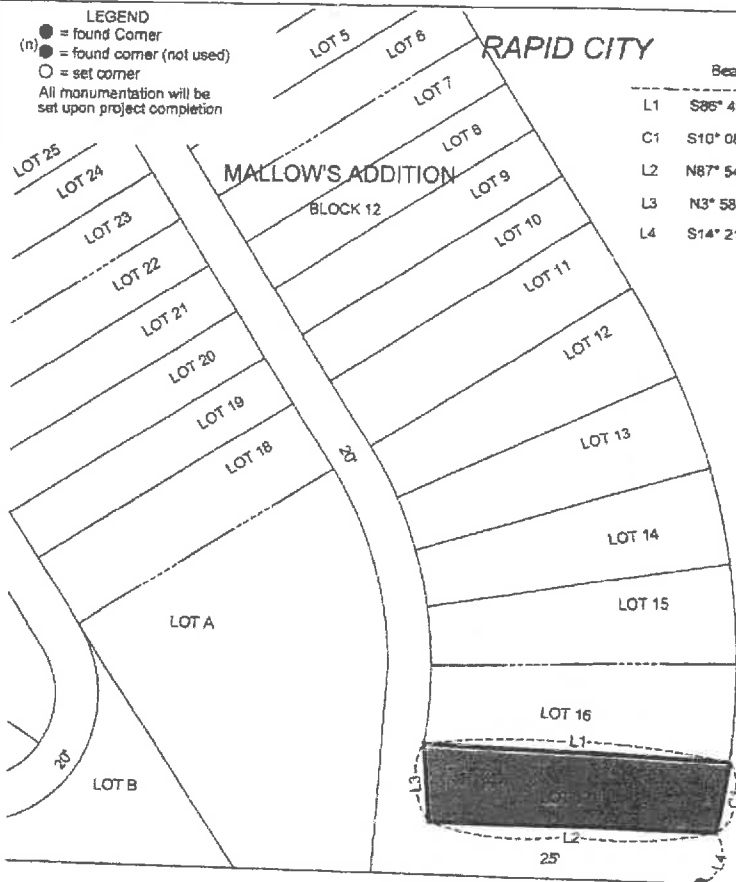
25377

Parcel No. F

### PLAT OF LOT H1

Showing a parcel of land to be dedicated for highway purposes in  
 Lot 17 of Block 12 of Mallow's Addition  
 To the City of Rapid City  
 for construction of Project IM : 80261910  
 PENNINGTON COUNTY, SOUTH DAKOTA  
 Scale 1 inch = 50 feet

- LEGEND**
- = found corner
  - (n) ● = found corner (not used)
  - = set corner
- All monumentation will be set upon project completion

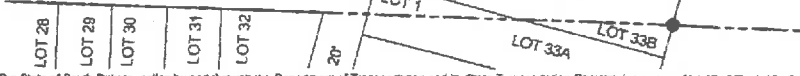


	Bearing	Length	Chord	Radius
L1	S85° 49' 18"E	140.61		
C1	S10° 08' 17"W	33.85	33.83	336.00R
L2	N87° 54' 47"W	132.00		
L3	N3° 58' 55"W	36.38		
L4	S14° 21' 25"W	25.58		

Present Interstate 190

Lot H1 - Lot 17  
 4,758 sq ft or 0.11 ac  
 more or less

Note 1: The coordinates, distances and areas shown on this plat are based on the South Dakota State Plane coordinate System South Zone NAD 83/96 SF = 0.9997904901



The State of South Dakota, acting by and through the Department of Transportation and its State Transportation Commission owner of lot 17 of Block 12 of Mallow's Addition as shown above, do hereby join in and approve the survey and plat of land as represented and shown on the above plat and the land therein represented and designated as Lot H1 containing 0.11 acres, more or less, as shown and represented by said survey and plat, is hereby intended for and dedicated to the public for a public highway.

Witness my hand and seal on this 2nd day of July 2015.

State of South Dakota  
 Acting by and through the Department of Transportation and its State Transportation Commission.  
*[Signature]*  
 SECRETARY, SOUTH DAKOTA DEPARTMENT OF TRANSPORTATION

Drawing prepared by HDR Engineering  
 Rapid City, South Dakota  
 Drawn by Richard Lippert Date 04/22/15  
 Checked by Brian Jensen Date 04/22/15



### SURVEYOR'S CERTIFICATE

I, BRIAN J. JENSEN, Registered Land Surveyor, in and for the State of South Dakota, do hereby certify that as ordered by the South Dakota Department of Transportation the parcel of land as shown on this plat has been surveyed at my direction and under my control, and such parcel of land shall be hereafter known by the lot number designated herein. The location and dimensions of the parcel are shown on this plat.

In witness whereof, I have set my hand and seal this 7 day of MAY A.D., 2015.  
*[Signature]*  
 Registered Land Surveyor  
 Registration No. 8014

### OFFICE OF REGISTER OF DEEDS

State of South Dakota  
 County of Penn ss  
 Filed for record the 13th day of July A.D. 15 at 9:02A M., and recorded in Books of Plats A201509248 on Page 1162

1162

Register of Deeds by \_\_\_\_\_ Deputy

4-52-58

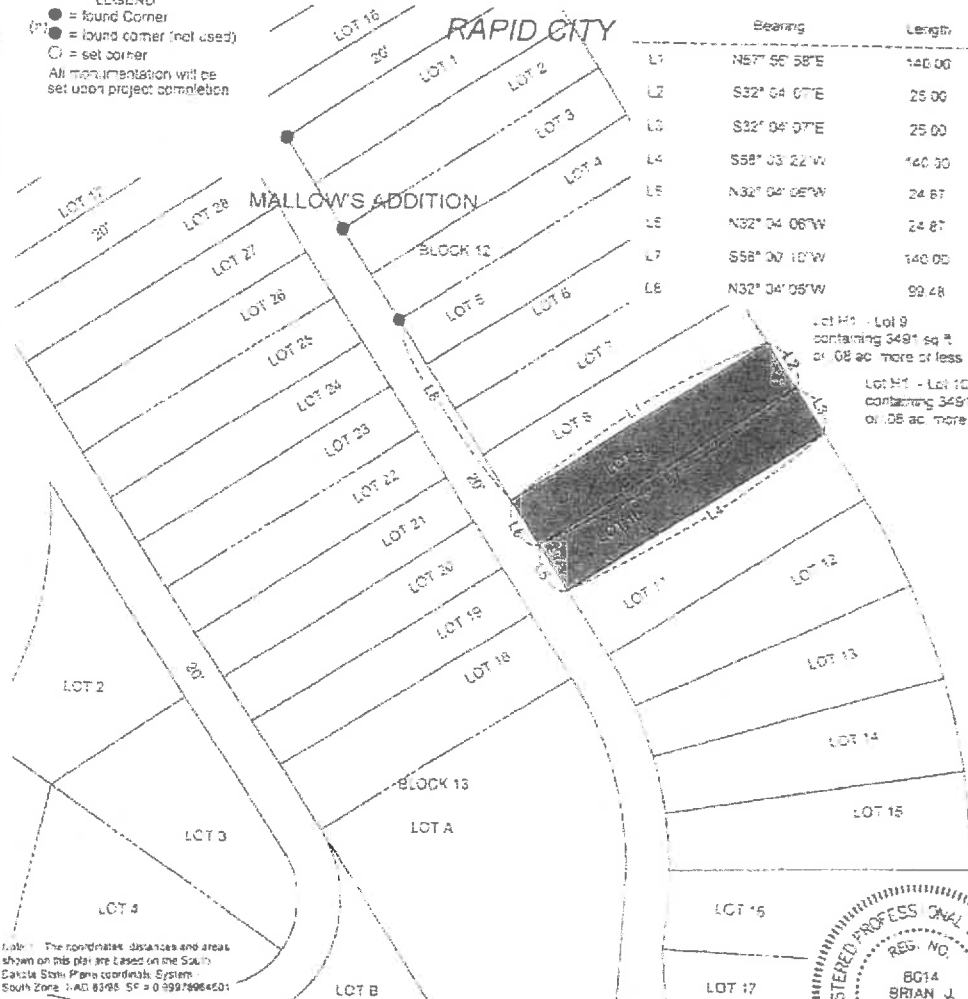
25370

Parcel H

### PLAT OF LOTS H1

Showing a portion of land to be dedicated for highway purposes in  
 Lot 9 and 10 in Block 12 of Mallow's Addition  
 To the City of Rapid City  
 for construction of Project RA 19281-0  
 PENNINGTON COUNTY SOUTH DAKOTA  
 Scale: 1 inch = 30 feet

**LEGEND**  
 ● = found corner  
 ○ = found corner (not used)  
 ○ = set corner  
 All monumentation will be  
 set upon project completion



Lot #9 - Lot 9  
 containing 349' sq ft  
 or .08 ac. more or less

Lot #10 - Lot 10  
 containing 349' sq ft  
 or .08 ac. more or less

Note: The coordinates, distances and areas shown on this plat are based on the South Dakota State Plane coordinate system - South Zone. FAD 8395 SF = 0.99979964201

The State of South Dakota, acting by and through the Department of Transportation and its State Transportation Commission (owner of lots 9 and 10 of Block 12 of Mallow's Addition to the City of Rapid City as shown above, do hereby join in and approve the survey and plat of land as represented and shown on the above plat, and the land therein represented and designated as Lot #9 containing 0.15 acres, more or less, as shown and represented by said survey and plat is hereby intended for and dedicated to the public for a public highway.

Witness my hand and seal on this 10 day of July 2015

State of South Dakota  
 Acting by and through the Department of Transportation  
 and its State Transportation Commission

SECRETARY SOUTH DAKOTA DEPARTMENT OF TRANSPORTATION



Drawing prepared by HDR Engineering  
 Rapid City, South Dakota  
 Drawn by Richard Liggert Date 07/08/15  
 Checked by Brian Jensen Date 07/08/15

#### SURVEYOR'S CERTIFICATE

I, BRIAN J. JENSEN, Registered Land Surveyor, # and for the State of South Dakota, do hereby certify that as ordered by the South Dakota Department of Transportation the parcel of land as shown on this plat has been surveyed at my direction and under my control, approval and supervision, and the land therein represented and designated as Lot #9 containing 0.15 acres, more or less, as shown and represented by said survey and plat is hereby intended for and dedicated to the public for a public highway.

In witness whereof, I have set my hand and seal this 10 day of July AD 2015

*Brian Jensen*  
 Registered Land Surveyor  
 Registration No. 8014

#### OFFICE OF REGISTER OF DEEDS

State of South Dakota  
 County of Pennington ss  
 Filed for record the 20 day of July AD 2015 at 9:09 a.m. and recorded in Books of Deeds ADDIC08388 on Page 1162

1162

Register of Deeds \_\_\_\_\_ by \_\_\_\_\_ Deputy

4-52-57

25374

Parcel No. G

## PLAT OF LOTS H1

Showing a parcel of land to be dedicated for highway purposes in  
Lots 12 and 13 of Block 12 of Mallow's Addition  
To the City of Rapid City  
for construction of Project IM 19026110  
PENNINGTON COUNTY, SOUTH DAKOTA  
Scale 1 inch = 50 feet

**LEGEND**

- = found Corner
- (n) ● = found corner (not used)
- = set corner

All monumentation will be set upon project completion

	Bearing	Length	Chord	Radius
L1	N58° 08' 02"E	140.00		
C1	S27° 48' 54"E	45.70	45.66	336.00R
C2	S20° 01' 20"E	45.70	45.66	336.00R
L2	S73° 52' 27"W	140.00		
C3	N19° 55' 54"W	26.04	26.02	196.00R
C4	N27° 40' 09"W	26.90	26.88	196.00R
L3	N65° 49' 39"E	140.00		
L4	S0° 31' 20"W	193.84		

Lot H1 - Lot 12  
5,082 sq ft or 0.12 ac more or less

Lot H1 - Lot 13  
5,022 sq ft or 0.12 ac more or less

Note 1: The coordinates, distances and areas shown on this plat are based on the South Dakota State Plane coordinate System, South Zone NAD 83/96 SF = 6,359,799,64801

The State of South Dakota, acting by and through the Department of Transportation and its State Transportation Commission owner of lots 12 and 13 of Block 12 of Mallow's Addition as shown above, do hereby join in and approve the survey and plat of land as represented and shown on the above plat; and the land therein represented and designated as Lot H1 containing 0.24 acres, more or less, as shown and represented by said survey and plat, is hereby intended for and dedicated to the public for a public highway.

Witness my hand and seal on this 7th day of July 2015

State of South Dakota  
Acting by and through the Department of Transportation  
and its State Transportation Commission

*[Signature]*  
SECRETARY, SOUTH DAKOTA DEPARTMENT OF TRANSPORTATION

Drawing prepared by HDR Engineering  
Rapid City, South Dakota

Drawn By Richard Lippert Date 04/28/15

Checked By Brian Jensen Date 05/01/15

**SURVEYOR'S CERTIFICATE**

I, BRIAN J. JENSEN, Registered Land Surveyor, in and for the State of South Dakota, do hereby certify that as ordered by the South Dakota Department of Transportation the parcel of land as shown on this plat has been surveyed at my direction and under my control, and such parcel of land shall be hereafter known by the lot number designated herein. The location and dimensions of the parcel are shown on this plat.

In witness whereof, I have set my hand and seal this 7 day of MAY A.D. 2015

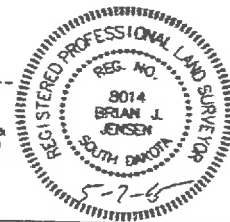
*[Signature]*  
Registered Land Surveyor  
Registration No. 8014

**OFFICE OF REGISTER OF DEEDS**

State of South Dakota  
County of Pennington as  
Filed for record the 13 day of July A.D. 2015 at 9:02AM M., and recorded in Books of Plats Doc# A201509249 Page 2

1162

Register of Deeds by Deputy



Parcel No. D

## PLAT OF LOT H1

Showing a parcel of land to be dedicated for highway purposes in  
 Lot 11 of Block 12 of Mallow's Addition  
 To the City of Rapid City  
 for construction of Project 16-1902610  
 PENNINGTON COUNTY, SOUTH DAKOTA  
 Scale: 1 inch = 50 feet

**LEGEND**

- = found corner
- (n)● = found corner (not used)
- = set corner

All monumentation will be set upon project completion

	Bearing	Length
L1	N58° 03' 22"E	140.00
L2	S32° 04' 07"E	36.00
L3	S58° 08' 02"W	140.00
L4	N32° 04' 06"W	35.81
L5	S32° 04' 06"E	149.22

Present Interstate 180

**Note 1:** The coordinates, distances and areas shown on this plat are based on the South Dakota State Plane coordinate System - South Zone NAD 83/98 SF = 0.99978864601

The State of South Dakota, acting by and through the Department of Transportation and its State Transportation Commission owner of lot 11 of Block 12 of Mallow's Addition as shown above, do hereby join in and approve the survey and plat of land as represented and shown on the above plat; and the land therein represented and designated as Lot 11 containing 0.12 acres, more or less, as shown and represented by said survey and plat, is hereby intended for and dedicated to the public for a public highway.

Witness my hand and seal on this 13 day of July 2015

State of South Dakota  
 Acting by and through the Department of Transportation and its State Transportation Commission

*[Signature]*  
 SECRETARY, SOUTH DAKOTA DEPARTMENT OF TRANSPORTATION

REGISTERED PROFESSIONAL LAND SURVEYOR

REG. NO. 8014

BRIAN J. JENSEN

SOUTH DAKOTA

5-7-15

Drawing prepared by HDR Engineering  
 Rapid City, South Dakota  
 Drawn by Richard Upcott Date 04/28/15  
 Checked by Brian Jensen Date 04/28/15

### SURVEYOR'S CERTIFICATE

I, BRIAN J. JENSEN, Registered Land Surveyor, in and for the State of South Dakota, do hereby certify that as ordered by the South Dakota Department of Transportation the parcel of land as shown on this plat has been surveyed at my direction and under my control, and such parcel of land shall be hereafter known by the lot number designated herein. The location and dimensions of the parcel are shown on this plat.

In witness whereof, I have set my hand and seal this 7 day of May, A.D. 2015

*[Signature]*  
 Registered Land Surveyor  
 Registration No. 8014

### OFFICE OF REGISTER OF DEEDS

State of South Dakota  
 County of Rain as  
 Filed for record the 13 day of July, A.D. 2015, at 9:02A M., and recorded in Books of Plats A201509247 on Page 1162

DOCH

Register of Deeds by Deputy

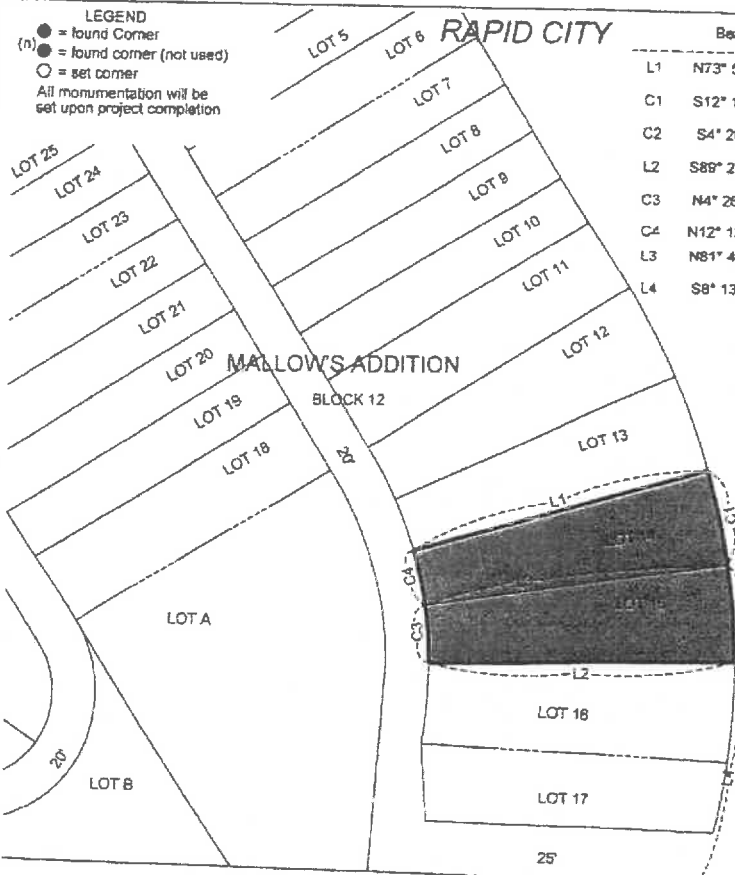
Parcel No. 11

### PLAT OF LOTS H1

Showing a parcel of land to be dedicated for highway purposes in  
Lots 14 and 15 of Block 12 of Mallows Addition  
To the City of Rapid City  
for construction of Project M 14028 110  
PENNINGTON COUNTY, SOUTH DAKOTA

Scale 1 inch = 50 feet

**LEGEND**  
 ● = found Corner  
 (n) ● = found corner (not used)  
 ○ = set corner  
 All monumentation will be set upon project completion



	Bearing	Length	Chord	Radius
L1	N73° 52' 27"E	140.00		
C1	S12° 13' 46"E	45.70	45.56	336.00R
C2	S4° 26' 12"E	45.70	45.56	336.00R
L2	S89° 27' 35"W	140.00		
C3	N4° 26' 12"W	28.66	28.64	196.00R
C4	N12° 13' 46"W	28.66	28.64	196.00R
L3	N81° 40' 01"E	140.00		
L4	S8° 13' 03"W	104.75		

Lot H1 - Lot 14  
5,065 sq ft or 0.12 ac  
more or less

Lot H1 - Lot 15  
5,065 sq ft or 0.12 ac  
more or less

Present Interstate 190

Note 1: The coordinates, distances and areas shown on this plat are based on the South Dakota State Plane coordinate System - South Zone NAD 83/98 SF = 0.99978964801

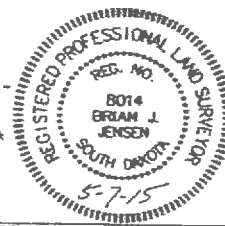
The State of South Dakota, acting by and through the Department of Transportation and its State Transportation Commission owner of lots 14 and 15 of Block 12 of Mallows Addition as shown above, do hereby join in and approve the survey and plat of land as represented and shown on the above plat, and the land therein represented and designated as Lot H1 containing 0.24 acres, more or less, as shown and represented by said survey and plat, is hereby intended for and dedicated to the public for a public highway.

Witness my hand and seal on this 20 day of July 2015

State of South Dakota  
Acting by and through the Department of Transportation and its State Transportation Commission

SECRETARY, SOUTH DAKOTA DEPARTMENT OF TRANSPORTATION

Drawing prepared by HDR Engineering  
Rapid City, South Dakota  
Drawn By Richard Lippert Date 05/27/15  
Checked By Brian Jensen Date 06/02/15



#### SURVEYOR'S CERTIFICATE

I, BRIAN J. JENSEN, Registered Land Surveyor, in and for the State of South Dakota, do hereby certify that as ordered by the South Dakota Department of Transportation the parcel of land as shown on this plat has been surveyed at my direction and under my control, and such parcel of land shall be hereinafter known by the lot number designated herein. The location and dimensions of the parcel are shown on this plat.

In witness whereof, I have set my hand and seal this

20 day of July A.D. 2015

Brian Jensen  
Registered Land Surveyor  
Registration No. B014

#### OFFICE OF REGISTER OF DEEDS

State of South Dakota  
County of Pennington  
Filed for record the 13 day of July A.D. 2015 at 9:02 AM, and recorded in Books of Plats 4301509241 on Page 1162

Register of Deeds

by

Deputy



Parcel No. 4

## PLAT OF LOTS H1

Showing a parcel of land to be dedicated for highway purposes in  
Lots 3 and 4 in Block 2 of North Boulevard Addition  
To the City of Rapid City  
for construction of Project IM 1902(81)0  
PENNINGTON COUNTY, SOUTH DAKOTA  
Scale: 1 inch = 50 feet

**LEGEND**

- = found Corner
- (n) ● = found corner (not used)
- = set corner

All monumentation will be set upon project completion

	Bearing	Length
L1	S75° 24' 13"E	136.83
L2	S14° 35' 47"W	25.00
L3	S14° 35' 47"W	25.00
L4	N75° 24' 13"W	136.83
L5	N14° 35' 47"E	25.00
L6	N14° 35' 47"E	25.00
L8	S14° 35' 47"W	50.00
L9	S14° 44' 10"W	50.36
L10	N14° 35' 47"E	215.29

Lot H1 - Lot 3  
3,421 sq ft or 0.08 ac  
more or less

Lot H1 - Lot 4  
3,421 sq ft or 0.08 ac  
more or less

RAPID CITY

1/4 LINE

TRACT 19 LESS LOT H1

Present Interstate 190

Philadelphia Street

LOT 1 - LOT 3  
3,421 sq ft or 0.08 ac  
more or less

LOT 1 - LOT 4  
3,421 sq ft or 0.08 ac  
more or less

Note 1. The coordinates, distances and areas shown on this plat are based on the South Dakota State Plane coordinate System - South Zone NAD 83/96 5F = 0.99970864801

The State of South Dakota, acting by and through the Department of Transportation and its State Transportation Commission owner of lots 3 and 4 of Block 2 of North Boulevard Addition as shown above, do hereby join in and approve the survey and plat of land as represented and shown on the above plat; and the land therein represented and designated as Lot H1 containing 0.16 acres, more or less, as shown and represented by said survey and plat, is hereby intended for and dedicated to the public for a public highway.

Witness my hand and seal on this 13 day of July 2015

State of South Dakota  
Acting by and through the Department of Transportation  
and its State Transportation Commission.

Brian Jensen  
SECRETARY, SOUTH DAKOTA DEPARTMENT OF TRANSPORTATION

REGISTERED PROFESSIONAL LAND SURVEYOR

REG. NO.  
8014  
BRIAN J.  
JENSEN  
SOUTH DAKOTA

5-7-15

Richard Liggoff Date: 04/28/15  
Brian Jensen Date: 04/28/15

### SURVEYOR'S CERTIFICATE

I, BRIAN J. JENSEN, Registered Land Surveyor, in and for the State of South Dakota, do hereby certify that as ordered by the South Dakota Department of Transportation the parcel of land as shown on this plat has been surveyed at my direction and under my control, and such parcel of land shall be hereafter known by the lot number designated herein. The location and dimensions of the parcel are shown on this plat.

In witness whereof, I have set my hand and seal this 13 day of July, A.D. 2015.

Brian Jensen  
Registered Land Surveyor  
Registration No. 8014

### OFFICE OF REGISTER OF DEEDS

State of South Dakota  
County of Penn ss  
Filed for record the 13 day of July, A.D. 2015 at 9:02 P.M. and recorded in Books of Plats A20609239 on Page 200th

1162 Register of Deeds by Deputy

4-52-01

25376

Parcel No. A

## PLAT OF LOT H1

Showing a parcel of land to be dedicated for highway purposes in  
 Lot 16 of Block 12 of Mallow's Addition  
 To the City of Rapid City  
 for construction of Project #1 1902B-130  
 PENNINGTON COUNTY, SOUTH DAKOTA  
 Scale: 1 inch = 50 feet

	Bearing	Length	Chord	Radius
L1	N89° 27' 35"E	140.00		
C1	S3° 21' 22"W	45.70	45.66	336.00R
L2	N86° 48' 18"W	140.61		
C2	N4° 48' 01"E	36.65	36.60	196.00R
L3	S11° 57' 17"W	59.38		

**LEGEND**

● = found Corner  
 (n)● = found corner (not used)  
 ○ = set corner  
 All monumentation will be set upon project completion

Lot H1 - Lot 16  
 5 764 sq ft or 0.13 ac  
 more or less

**Note:** The coordinates, distances and areas shown on this plat are based on the South Dakota State Plane coordinate System - South Zone NAD 83/98 SF = 0.9997094601

The State of South Dakota, acting by and through the Department of Transportation and its State Transportation Commission owner of lot 16 of Block 12 of Mallow's Addition as shown above, do hereby join in and approve the survey and plat of land as represented and shown on the above plat, and the land therein represented and designated as Lot H1 containing 0.13 acres, more or less, as shown and represented by said survey and plat, is hereby intended for and dedicated to the public for a public highway.

Witness my hand and seal on this 7<sup>th</sup> day of July, 2015

State of South Dakota  
 Acting by and through the Department of Transportation  
 and its State Transportation Commission

*[Signature]*  
 SECRETARY, SOUTH DAKOTA DEPARTMENT OF TRANSPORTATION

REGISTERED PROFESSIONAL LAND SURVEYOR  
 REG. NO.  
 8014  
 BRIAN J.  
 JENSEN  
 SOUTH DAKOTA  
 5-7-15

Drawings prepared by	HDR Engineering
Drawn by	Richard Lippert
Checked by	Brian Jensen
Date	04/29/15
Date	04/29/15

### SURVEYOR'S CERTIFICATE

I, BRIAN J. JENSEN, Registered Land Surveyor, in and for the State of South Dakota, do hereby certify that as ordered by the South Dakota Department of Transportation the parcel of land as shown on this plat has been surveyed at my direction and under my control, and such parcel of land shall be hereafter known by the lot number designated herein. The location and dimensions of the parcel are shown on this plat.

In witness whereof, I have set my hand and seal this 7 day of MAY, A.D. 2015.

*[Signature]*  
 Registered Land Surveyor  
 Registered No. 8014

### OFFICE OF REGISTER OF DEEDS

State of South Dakota  
 County of Pennington as  
 Filed for record the 13 day of July, A.D. 2015, at 9:02 AM, and recorded in Books of Plats ADD509214 on Page 1

1162      Registrar of Deeds      by      Deputy

26562

Parcel No. B

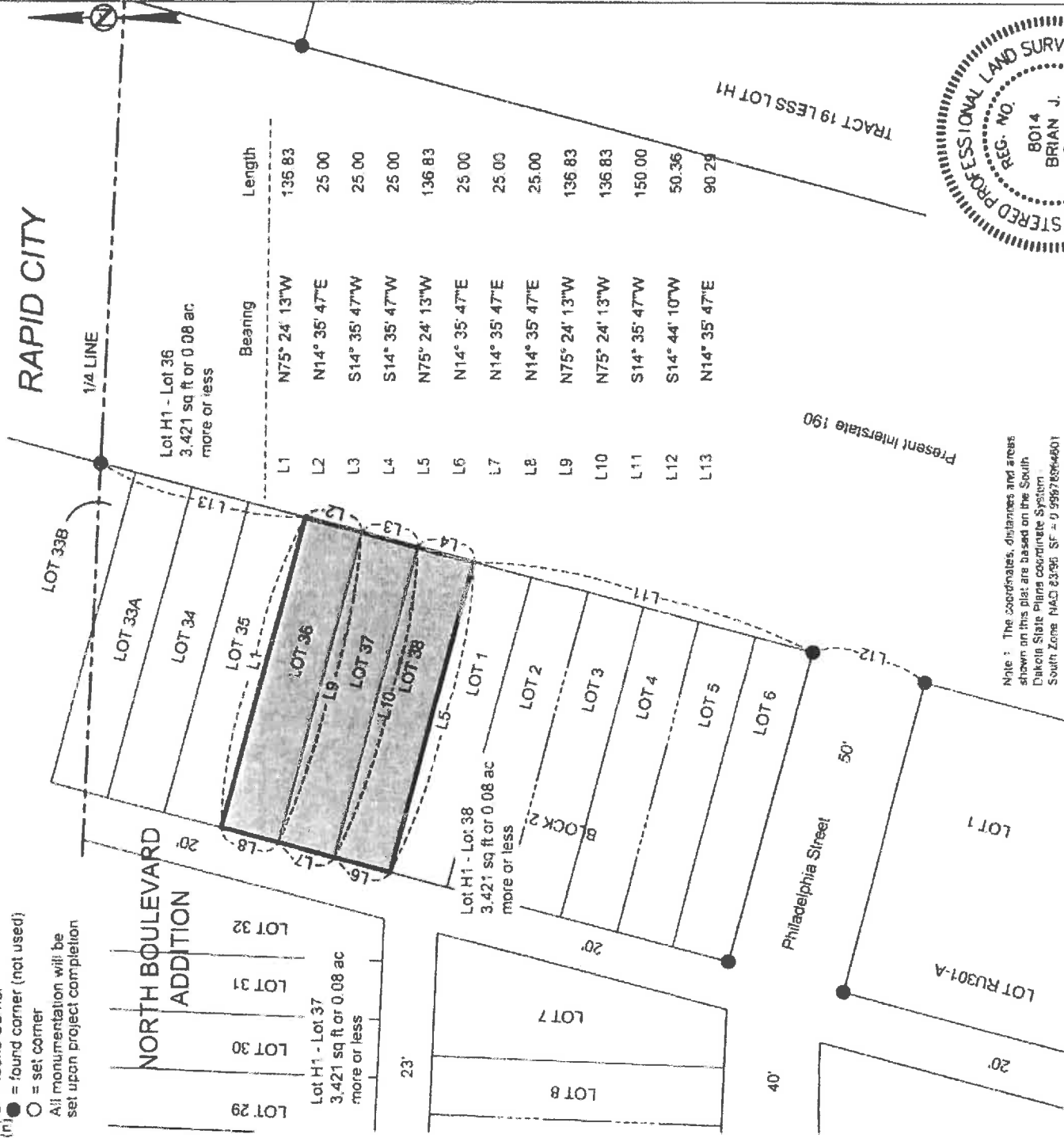
# PLAT OF LOTS H1

Showing a parcel of land to be dedicated for highway purposes in Lots 36, 37 and 38 in Block 2 of North Boulevard Addition To the City of Rapid City

for construction of Project IM 19203.112  
PENNINGTON COUNTY, SOUTH DAKOTA

Scale 1 inch = 50 feet

- LEGEND**
- = found corner
  - = set corner
  - (n) = found corner (not used)
- All monumentation will be set upon project completion

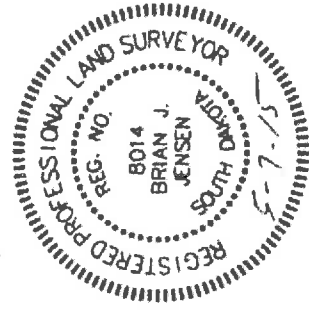


Lot H1 - Lot 36  
3,421 sq ft or 0.08 ac  
more or less

Lot H1 - Lot 38  
3,421 sq ft or 0.08 ac  
more or less

Length	Bearing
136.83	N75° 24' 13"W
25.00	N14° 35' 47"E
25.00	S14° 35' 47"W
25.00	S14° 35' 47"W
136.83	N75° 24' 13"W
25.00	N14° 35' 47"E
25.00	N14° 35' 47"E
25.00	N14° 35' 47"E
136.83	N75° 24' 13"W
136.83	N75° 24' 13"W
150.00	S14° 35' 47"W
50.36	S14° 44' 10"W
90.29	N14° 35' 47"E

TRACT 19 LESS LOT H1



Note: The coordinates, distances and areas shown on this plat are based on the South Dakota State Plane Coordinate System - South Zone NAD 83 96 SF = 9 99676364901

The State of South Dakota, acting by and through the Department of Transportation and its State Transportation Commission, do hereby join in and approve the survey and plat of land as represented and shown on the above plat, and the same is hereby dedicated to the public for a public highway.

Witness my hand and seal on this July day of July, 2015

State of South Dakota  
Acting by and through the Department of Transportation  
and its State Transportation Commission

*Brian J. Jensen*  
Secretary, South Dakota Department of Transportation

Secretary, South Dakota Department of Transportation

Richard Loggett  
Brian Jensen

Date 04/28/15  
Date 04/28/15

## SURVEYOR'S CERTIFICATE

BRIAN J. JENSEN, Registered Land Surveyor, in and for the State of South Dakota, do hereby certify that as ordered by the South Dakota Department of Transportation, the parcel of land as shown on this plat has been surveyed at my direction and under my control, and such parcel of land shall be hereafter known by the lot number designated herein. The location and dimensions of the parcel are shown on this plat.

In witness whereof, I have set my hand and seal this

July day of July, A.D. 2015

*Brian Jensen*  
Registered Land Surveyor  
Registration No. 8014

State of South Dakota  
County of Pennington  
Filed for record the 13 day of July, A.D. 2015 at 9:02 AM and recorded in Books of Plats

## OFFICE OF REGISTER OF DEEDS

Doc# ADD1509245 on Page

MAY BE DRAWN WRONG IN RAPID CITY  
 65890

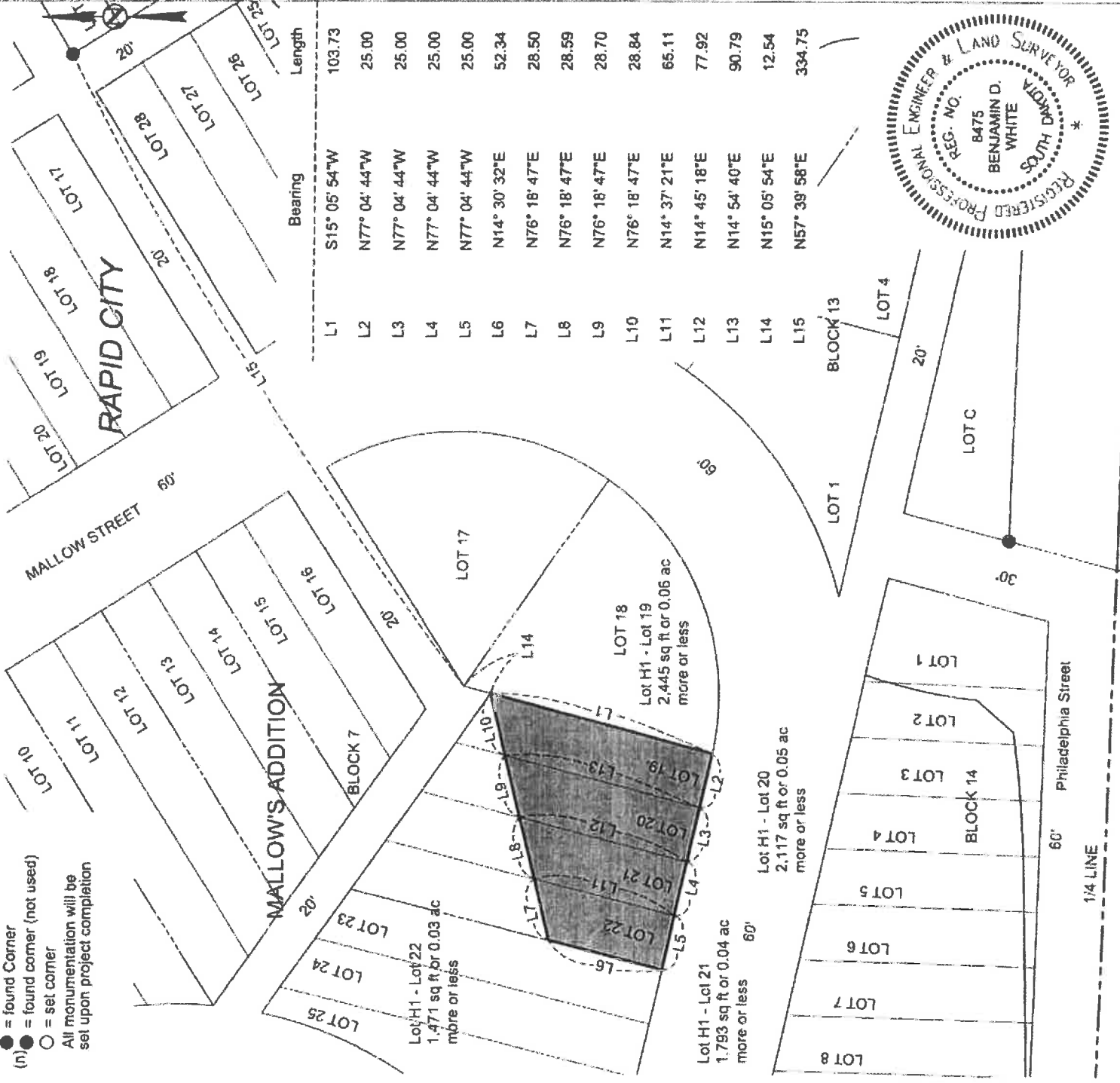
Parcel No. 45

# PLAT OF LOT H1

Showing a parcel of land to be acquired for highway purposes in  
 Lots 19-22 of Block 7 of Mallow's Addition  
 To the City of Rapid City  
 for construction of Project IH 1-9028110  
 PENNINGTON COUNTY, SOUTH DAKOTA

Scale: 1 inch = 50 feet

- LEGEND**
- = found Corner
  - = set corner (not used)
  - = set corner
  - All monumentation will be set upon project completion



	Bearing	Length
L1	S15° 05' 54"W	103.73
L2	N77° 04' 44"W	25.00
L3	N77° 04' 44"W	25.00
L4	N77° 04' 44"W	25.00
L5	N77° 04' 44"W	25.00
L6	N14° 30' 32"E	52.34
L7	N76° 18' 47"E	28.50
L8	N76° 18' 47"E	28.59
L9	N76° 18' 47"E	28.70
L10	N76° 18' 47"E	28.84
L11	N14° 37' 21"E	66.11
L12	N14° 45' 18"E	77.92
L13	N14° 54' 40"E	90.79
L14	N15° 05' 54"E	12.54
L15	N57° 39' 58"E	334.75



Note 1: The coordinates, distances and areas shown on this plat are based on the South Dakota State Plane Coordinate System, South Zone NAD 83 UTM SR = 0.9997844601

Drawing prepared by HDR Engineering  
 Rapid City, South Dakota  
 Drawn By: Richard Luggett  
 Checked By: Brad Jensen  
 Date: 09/15/14  
 Date: 09/15/14

## SURVEYOR'S CERTIFICATE

I, BENJAMIN D. WHITE, Registered Land Surveyor, in and for the State of South Dakota, do hereby certify that as ordered by the South Dakota Department of Transportation the parcel of land as shown on this plat has been surveyed at my direction and under my control, and such parcel of land shall be hereafter known by the lot number designated hereon. The location and dimensions of the parcel are shown on this plat.

In witness whereof, I have set my hand and seal this 30<sup>th</sup> day of OCTOBER, A.D. 2014.

Registered Land Surveyor  
 Registration No. 8475

## OFFICE OF REGISTER OF DEEDS

State of South Dakota  
 County of Penn<sup>55</sup>  
 Filed for record the 5 day of Nov, A.D. 2014, at 8:45 AM, and recorded in Books of Plats

A201414486 on Page

Register of Deeds \_\_\_\_\_ by \_\_\_\_\_ Deputy  
 1162