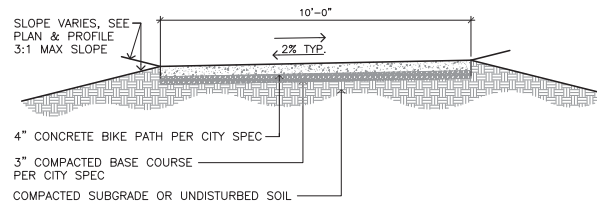
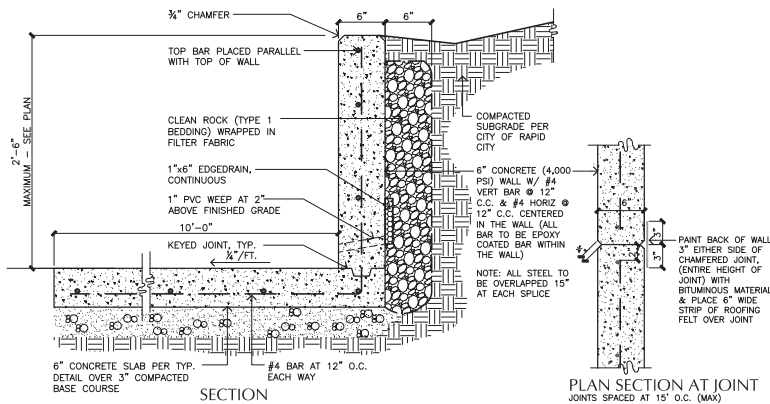


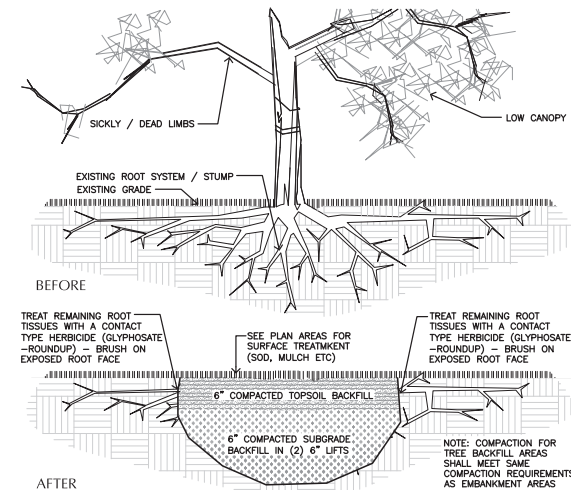
SECTION: TYPICAL CONCRETE PAVING  
SCALE: 1 1/2" = 1'-0"



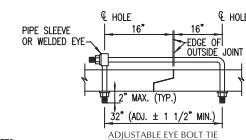
DETAIL: TYPICAL BIKE PATH SECTION  
SCALE: 1/2" = 1'-0"



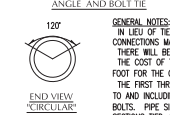
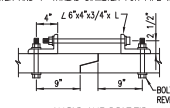
SECTION: TYPICAL C-WALL CONSTRUCTION  
SCALE: 1 1/2" = 1'-0"



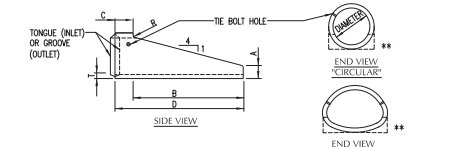
DETAIL: CLEAR AND GRUB TREE TYPICAL DETAIL  
SCALE: 1" = 1'-0"



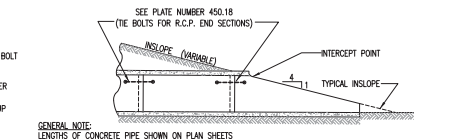
GENERAL NOTES:  
THE BOLTS TO BE FURNISHED WITH 2 WASHERS AND 2 NUTS EXCEPT FOR THE 9/16" ROD WHICH HAS UNTHREADED LEGS.  
USE 3/4" ROD DIAMETER & 3/4" THREAD DIAMETER FOR PIPE WALL THICKNESS OF 2"-3".  
USE 1/2" ROD DIAMETER & 3/4" THREAD DIAMETER FOR PIPE WALL THICKNESS OF 3/2" TO 4".  
USE 9/16" ROD DIAMETER AND 1" THREAD DIAMETER FOR PIPE WALL THICKNESS OF 4"+.



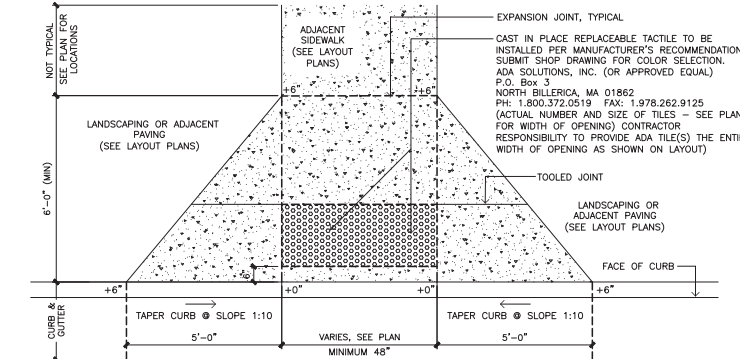
TIE BOLTS FOR R.C.P. END SECTIONS



DI.	T	A	B	C	D	R	
(N)	(N)	(N)	(N)	(N)	(N)	(N)	(N)
FOR CIRCULAR PIPE							
24	3	6	72	12	84	3	
FOR CIRCULAR PIPE							
24	3	9	72	12	84	0	

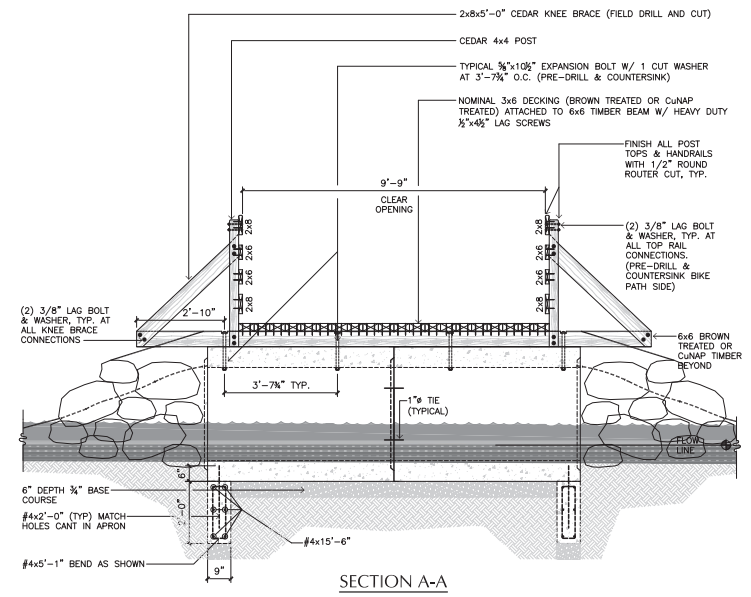
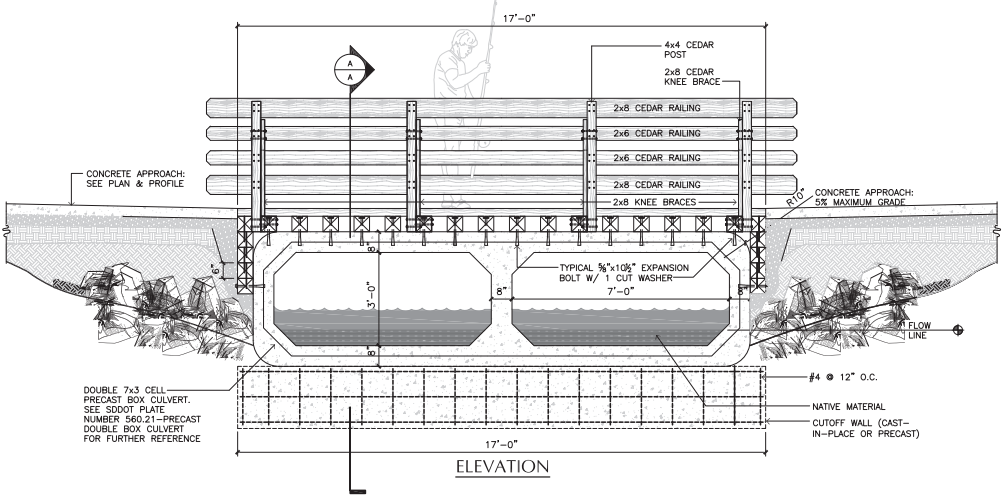
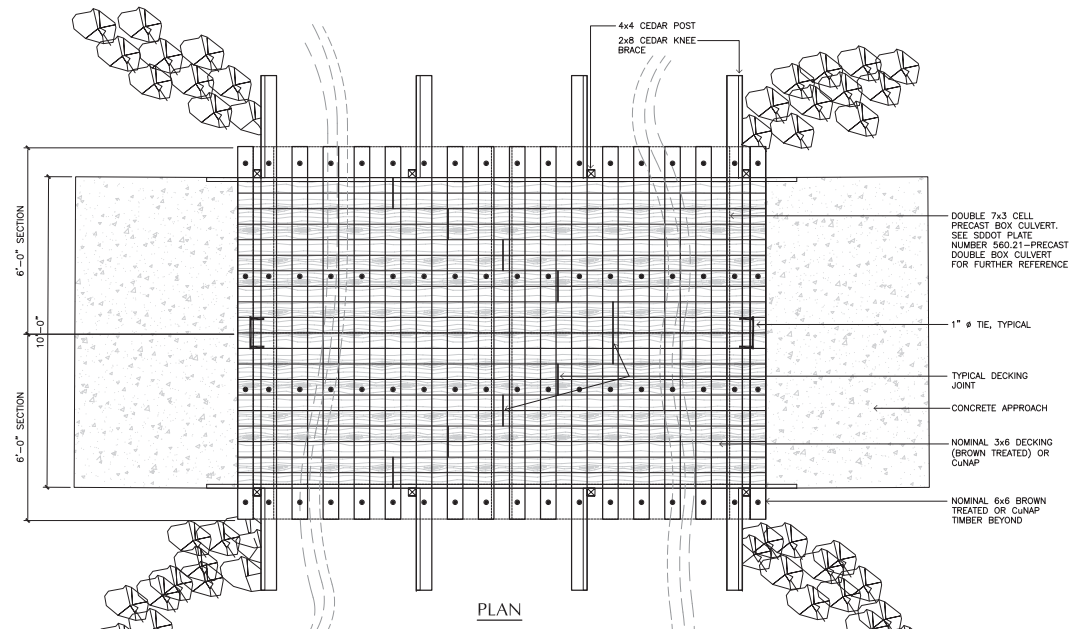


R.C.P. SLOPED ENDS



PLAN: TYPICAL ACCESSIBLE CONCRETE RAMP  
SCALE: 1/2" = 1'-0"

REINFORCED CONCRETE PIPE SLOPED ENDS  
SCALE: 1 1/2" = 1'-0"



PRECAST DOUBLE BOX CULVERT WITH CONCRETE APPROACH  
 SCALE: 1/2" = 1'-0"

Scale:	AS SHOWN
Designed By:	DMW
Drawn By:	DMW
Design Date:	FEB 2014
Print Date:	FEB 2014
Internal Job No:	12302
Surveyed By:	FAG/ENG
Survey Date:	AUG 2013
Revisions:	

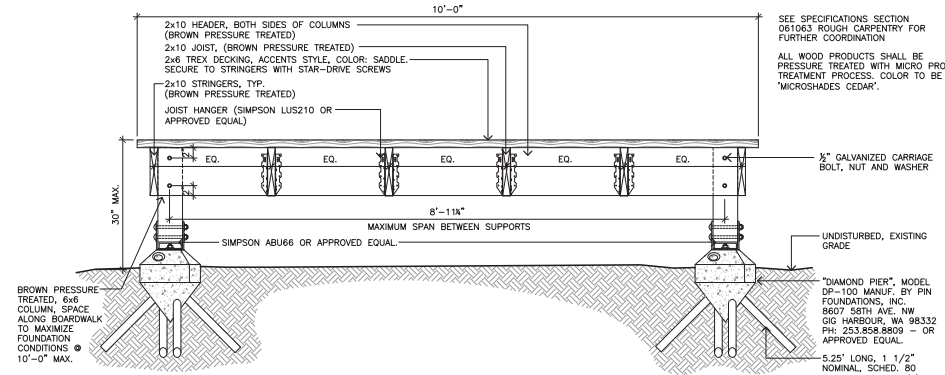
SWEET CREEK  
SPUR TRAIL

PROJECT NUMBER: PR12-6102

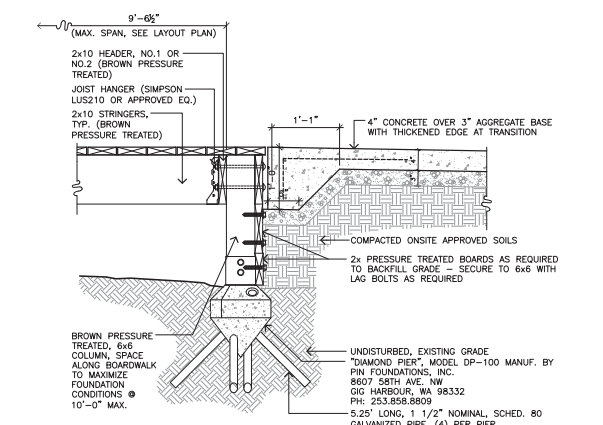
Sheet Title:

DETAILS

Sheet: 12 of 12



10' WETLAND CROSSING SECTION (STA. 7+00 to STA. 10+00)  
SCALE: 1" = 1'-0"



SECTION: WETLAND CROSSING SECTION AT TRAIL TRANSITION  
SCALE: 1" = 1'-0"