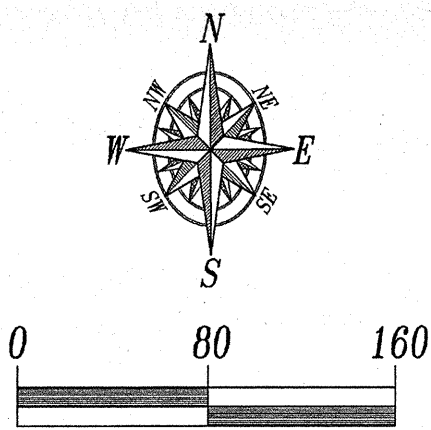


PLAT OF LOT H-1

Showing a tract of land to be dedicated for highway purposes
in the E1/2 SW1/4 NE1/4 NE1/4 of Section 23, T1N, R7E, B.H.M.

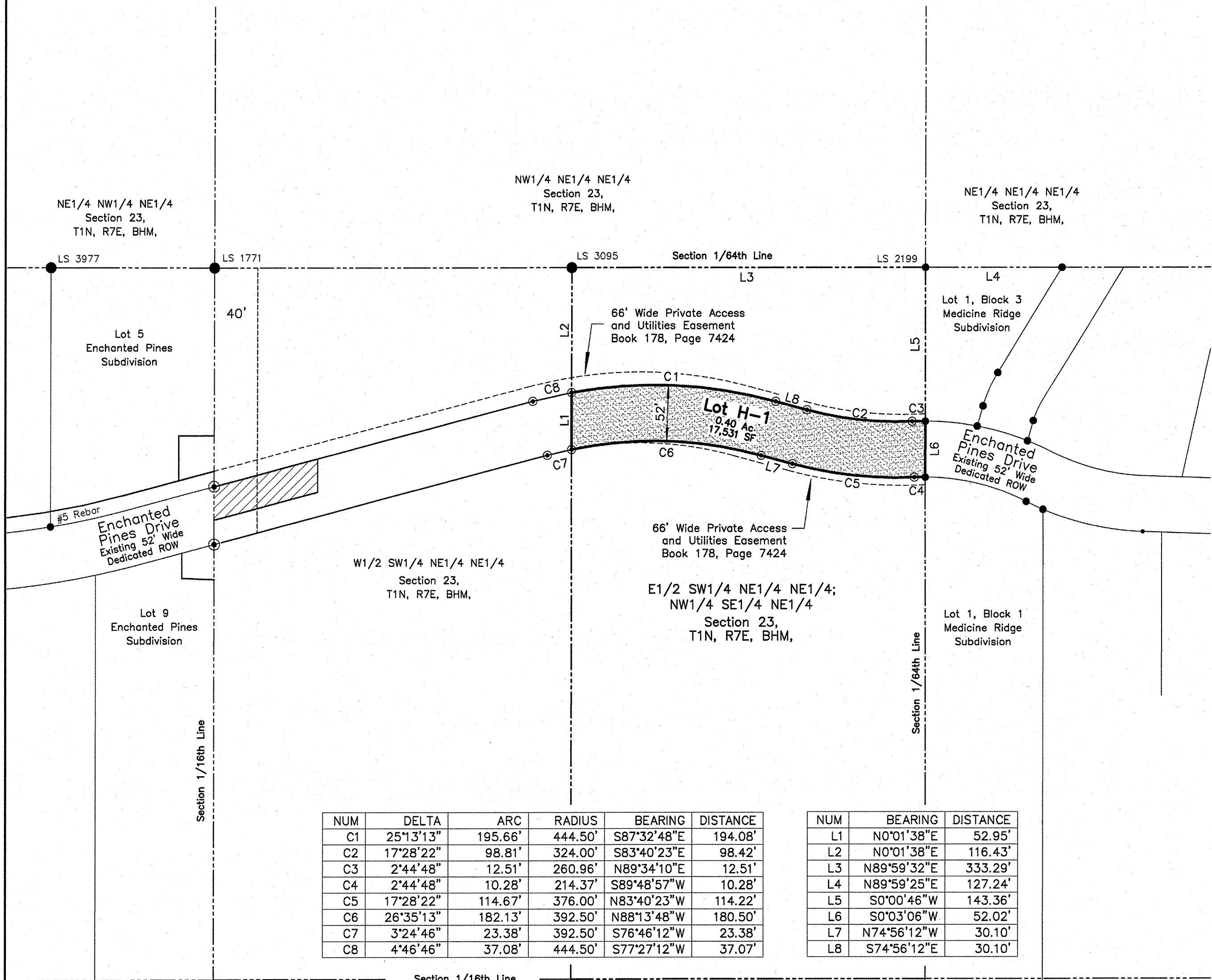
Rapid City, Pennington County, South Dakota

Scale: 1" = 80'



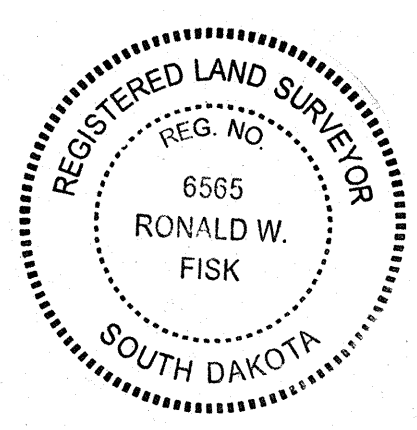
January 30, 2012
Rev. March 31, 2014

- = Found Survey Monument marked "LS4225" or as noted
- ⊙ = Set Rebar with cap marked "RW Fisk 6565"



NUM	DELTA	ARC	RADIUS	BEARING	DISTANCE
C1	25°13'13"	195.66'	444.50'	S87°32'48"E	194.08'
C2	17°28'22"	98.81'	324.00'	S83°40'23"E	98.42'
C3	2°44'48"	12.51'	260.96'	N89°34'10"E	12.51'
C4	2°44'48"	10.28'	214.37'	S89°48'57"W	10.28'
C5	17°28'22"	114.67'	376.00'	N83°40'23"W	114.22'
C6	26°35'13"	182.13'	392.50'	N88°13'48"W	180.50'
C7	3°24'46"	23.38'	392.50'	S76°46'12"W	23.38'
C8	4°46'46"	37.08'	444.50'	S77°27'12"W	37.07'

NUM	BEARING	DISTANCE
L1	N0°01'38"E	52.95'
L2	N0°01'38"E	116.43'
L3	N89°59'32"E	333.29'
L4	N89°59'25"E	127.24'
L5	S0°00'46"W	143.36'
L6	S0°03'06"W	52.02'
L7	N74°56'12"W	30.10'
L8	S74°56'12"E	30.10'



SURVEYOR'S CERTIFICATE

I, Ronald W. Fisk, Registered Land Surveyor in the State of South Dakota, do hereby state that at the direction of the City of Rapid City this tract of land as shown on this plat has been surveyed at my direction and under my control, and such tract of land shall be hereafter known by the lot number designated herein. The location and dimensions of the tract are shown on this plat.

In witness whereof,
I have set my hand and seal this 15 day of April, 2014

Ronald W. Fisk
Ronald W. Fisk
Registered Land Surveyor
Registration No. 6565

Fisk Land Surveying and
Consulting Engineers, Inc.
P.O. Box 8154
Rapid City, SD 57709
(605) 348-1538

OFFICE OF REGISTER OF DEEDS

State of South Dakota
County of Pennington

Filed for record this ___ day of ___, ___, at ___ m., and recorded
as Document # _____

Register of Deeds by Deputy