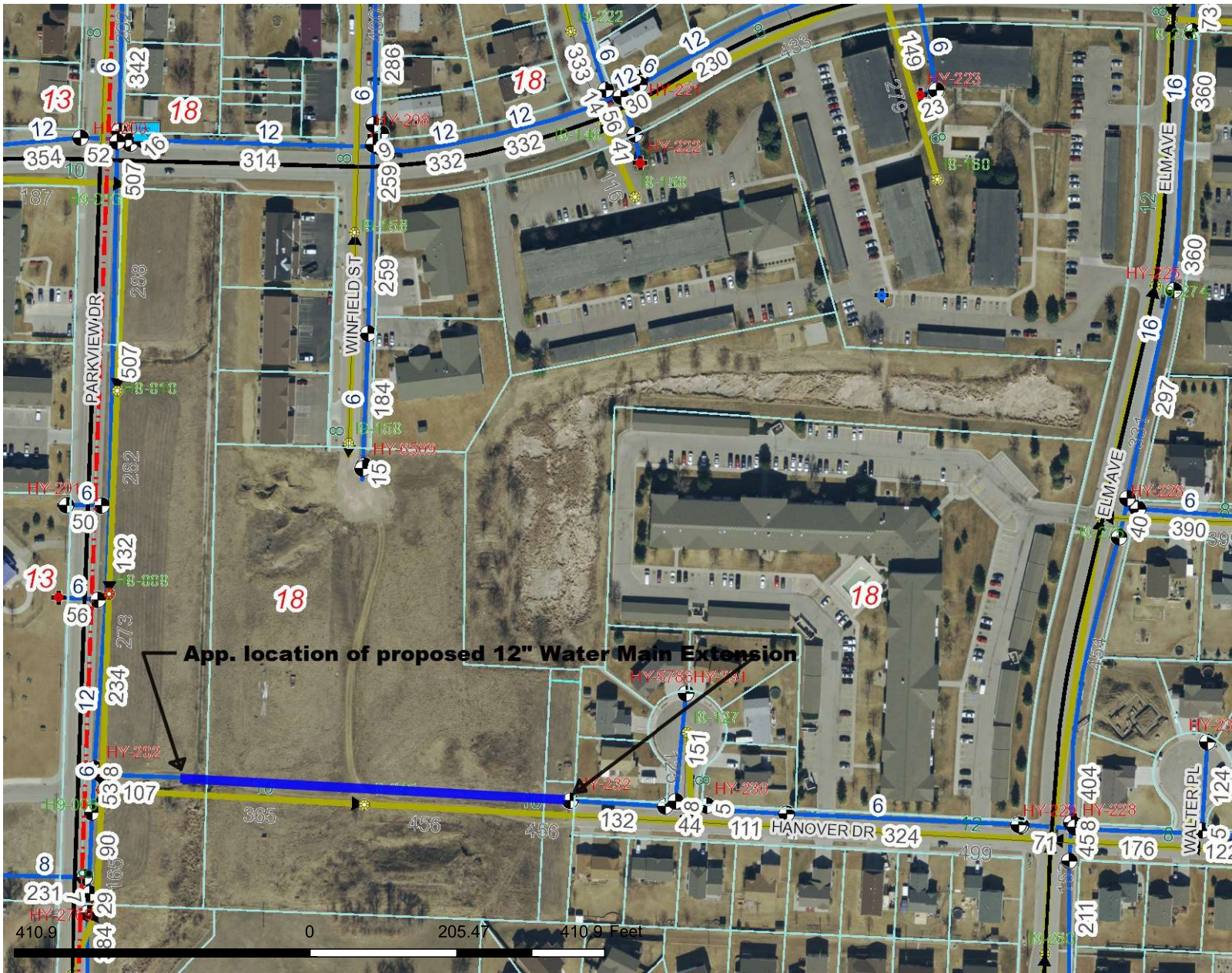


Legend

- Roads**
 - Interstate
 - US highway
 - SD highway
 - County highway
 - Main road
 - Minor arterial
 - Collector
 - Ramp
 - Paved road
 - Unpaved road
 - FS Highway
 - Driveway
 - Paved Alley
 - Unpaved Alley
 - Unimproved road
 - Trail
 - Airport Runway
 - Not yet coded
- Township/Section Lines**
 - 0
 - 7
- Tax Parcels**
 - Lot Lines
 - <Null>
 - Lot Line
 - Parcel Line
- County Line**
- Sewer Manholes**
 - StandardManhole, Public
 - DropManhole, Public
 - StandardManhole, Private
 - DropManhole, Private
- Sewer Lift Stations**
- Sewer Forced Main**
- Sewer Gravity Mains**
 - Collector, Public
 - SlinvertedSiphon, No
 - Trunk, Public
 - Interceptor, Public
 - Collector, Private
 - Trunk, Private
- Water Storage**
- Water Pump Stations**
- Water System Valves**
 - Ball
 - Butterfly
 - Cone
 - Gate
- Water Hydrants**
 - Flush Hydrant
 - Fire Hydrant
- Non RC Hydrants**
- Water Control Valves**
 - AirRelease
 - AltitudeValve
 - DoubleCheck
 - SimpleCheck
- Pressurized Water Mains**
 - Bypass
 - Chemical Injection



App. location of proposed 12" Water Main Extension



Map Notes:

DISCLAIMER: This map is provided 'as is' without warranty of any representation to accuracy, timeliness, or completeness. The burden for determining accuracy, completeness, timeliness, merchantability, and fitness for or the appropriateness for use rests solely on the user. Rapid City and Pennington County make no warranties, express or implied, as to the use of the map. There are no implied warranties of merchantability or fitness for a particular purpose. The user acknowledges and accepts the limitations of the map, including the fact that the data used to create the map is dynamic and is in the constant state of maintenance, correction, and update. This document does not represent a legal survey of the land. There are no restrictions on the distribution of printed Rapid City/Pennington County maps, other than the City of Rapid City copyright/credit notice must be legible on the print. The user agrees to recognize and honor in perpetuity the copyrights and other proprietary claims for the map(s) established or produced by the City of Rapid City or the vendors furnishing said items to the City of Rapid City.