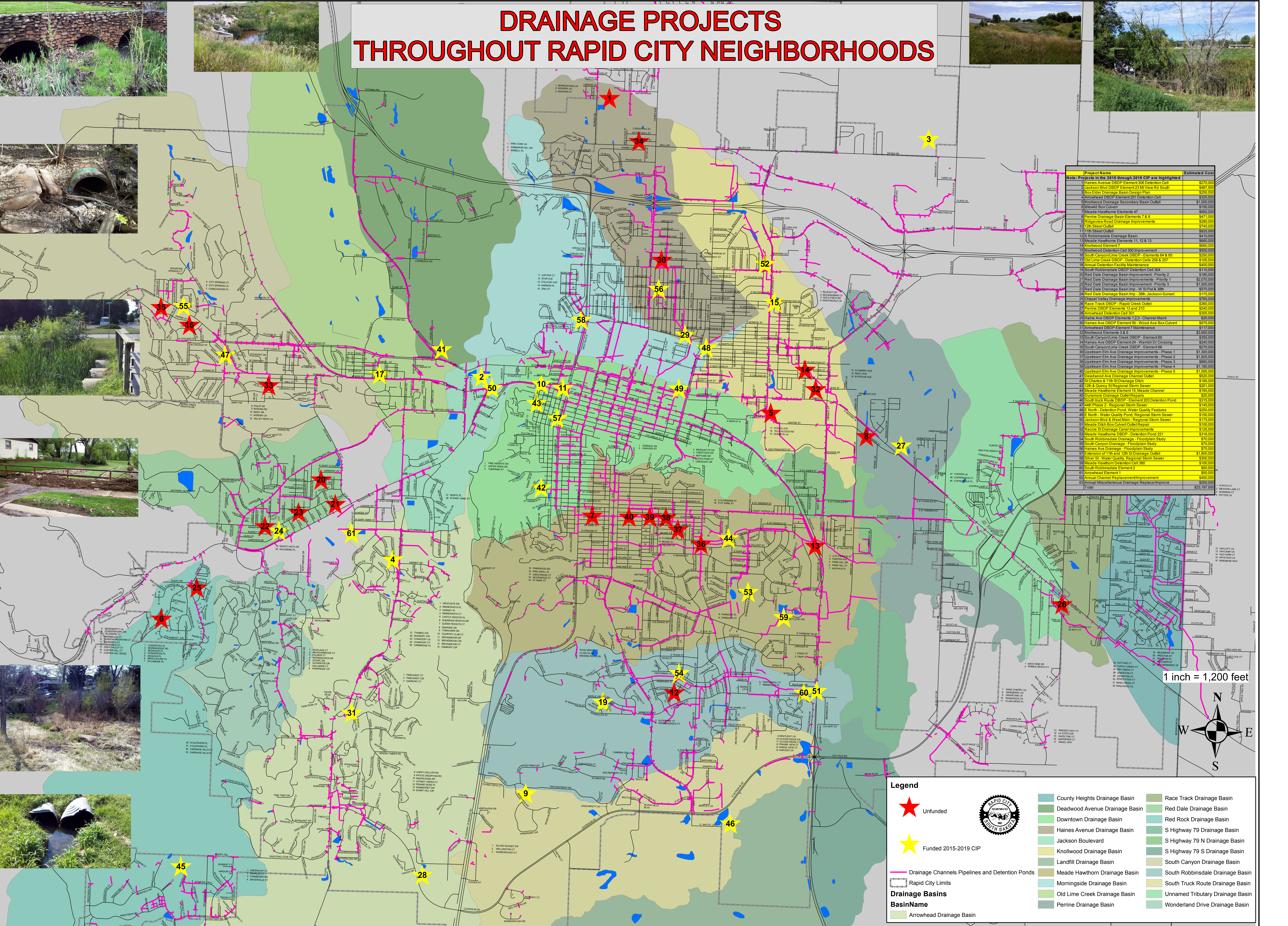
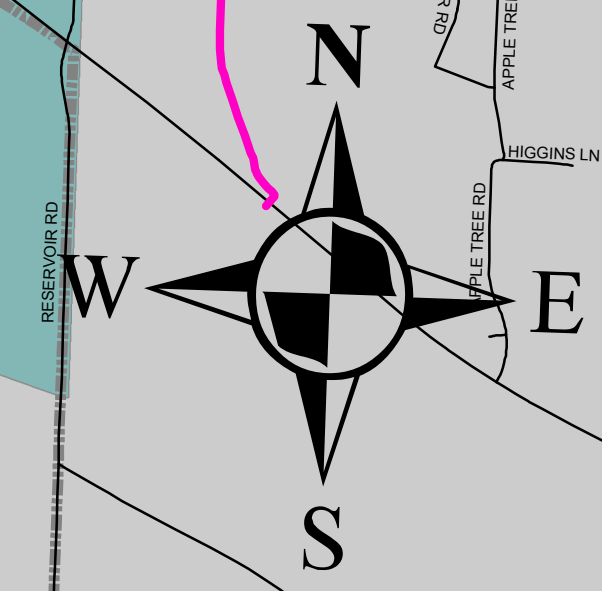


# DRAINAGE PROJECTS THROUGHOUT RAPID CITY NEIGHBORHOODS

Project Name	Estimated Cost
<b>Note: Projects in the 2018 through 2019 CIP are highlighted</b>	
1 Haines Avenue DBDP Element 30 Detention Cell	\$270,000
2 Jackson Blvd DBDP Element 23 Mt View Rd South	\$487,500
3 Box Elder Drainage Basin Design Plan	\$250,000
4 Arrowhead DBDP Element 251 Detention Cell	\$325,000
5 Knollwood Drainage Secondary Basin Outfall	\$1,000,000
6 Jolewit Box Culvert	\$150,000
7 Meade Hawthorne Elements 47	\$950,000
8 Perrine Drainage Basin Elements 7 & 8	\$471,000
9 Ridgeview Road Drainage Improvements	\$280,000
10 12th Street Outfall	\$740,000
11 11th Street Outfall	\$825,000
12 S Robbardsdale Drainage Basin	\$410,000
13 Meade Hawthorne Elements 11, 12 & 13	\$660,000
14 Knollwood Element 7	\$660,000
15 Knollwood Detention Cell 300 Improvement	\$500,000
16 South Canyon Creek DBDP - Elements 64 & 65	\$250,000
17 Old Lime Creek DBDP - Detention Cells 256 & 257	\$100,000
18 Annual Detention Facility Maintenance	\$400,000
19 South Robbardsdale DBDP Detention Cell 304	\$110,000
20 Red Dale Drainage Basin Improvement - Priority 2	\$180,000
21 Red Dale Drainage Basin Improvements - Priority 1	\$3,070,000
22 Red Dale Drainage Basin Improvement - Priority 3	\$1,500,000
23 Red Dale Drainage Basin Imp - W St Pat & 38th	\$570,000
24 Red Dale Drainage Basin Imp - 38th, Jackson-Sunset	\$175,000
25 Chapel Valley Drainage Improvements	\$765,000
26 Race Track DBDP - Rapid Creek Outlet	\$390,000
27 Perrine DBDP Elements 13 & 210	\$240,000
28 Arrowhead Detention Cell 303	\$355,000
29 Haines Ave DBDP Element 123 - Channel Maint	\$20,000
30 Haines Ave DBDP Element 60 - Wood Ave Box Culvert	\$775,000
31 Arrowhead DBDP Element 7 Maintenance	\$117,000
32 Knollwood Elements 3 & 5	\$3,950,000
33 South Canyon Creek DBDP - Element 60	\$300,000
34 Haines Ave DBDP Element 24 - Wambi Dr Crossing	\$240,000
35 South Canyon Creek DBDP - Element 66	\$270,000
36 Upstream Elm Ave Drainage Improvements - Phase 1	\$1,300,000
37 Upstream Elm Ave Drainage Improvements - Phase 2	\$1,925,000
38 Upstream Elm Ave Drainage Improvements - Phase 3	\$860,000
39 Upstream Elm Ave Drainage Improvements - Phase 4	\$1,150,000
40 Upstream Elm Ave Drainage Improvements - Phase 5	\$1,096,000
41 Deadwood Ave Drainage Channel Outlet	\$320,000
42 St Charles & 11th St Drainage Ditch	\$185,000
43 12th & Quincy St Regional Storm Sewer	\$201,000
44 Meade Hawthorne Element 15 - Meade Channel	\$185,000
45 Dumaine Drainage Outfall Replacer	\$200,000
46 South Truck Route DBDP - Element 203 Detention Pond	\$311,000
47 Elm Phase 2 - Regional Storm Sewer	\$145,000
48 E. North - Detention Pond Water Quality Features	\$250,000
49 E. North - Water Quality Pond - Regional Storm Sewer	\$150,000
50 Jackson Blvd & West Main - Regional Storm Sewer	\$175,000
51 Meade Ditch Box Culvert Outfall Replacer	\$100,000
52 Racine St Drainage Canal Improvements	\$125,000
53 Meade Hawthorne DBDP - Detention Pond 221	\$314,000
54 South Robbardsdale Drainage - Floodplain Study	\$70,000
55 South Canyon Drainage - Floodplain Study	\$70,000
56 Haines Ave Drainage - Floodplain Study	\$70,000
57 Extension of 11th and 12th St Drainage Outfall	\$1,800,000
58 Silver St - Water Quality - Regional Storm Sewer	\$300,000
59 Meade Hawthorne Detention Cell 300	\$100,000
60 South Robbardsdale Element 2	\$50,000
61 Arrowhead Element 1	\$50,000
62 Aquatic Channel Replacement Improvement	\$400,000
63 Annual Miscellaneous Drainage Replace/Improve	\$200,000
<b>Total</b>	<b>\$33,197,500</b>



1 inch = 1,200 feet



### Legend

- ★ Unfunded
  - ★ Funded 2015-2019 CIP
  - Drainage Channels Pipelines and Detention Ponds
  - Rapid City Limits
- Drainage Basins**
- BasinName**
- Arrowhead Drainage Basin
  - County Heights Drainage Basin
  - Deadwood Avenue Drainage Basin
  - Downtown Drainage Basin
  - Haines Avenue Drainage Basin
  - Jackson Boulevard
  - Knollwood Drainage Basin
  - Landfill Drainage Basin
  - Meade Hawthorn Drainage Basin
  - Morningside Drainage Basin
  - Old Lime Creek Drainage Basin
  - Perrine Drainage Basin
  - Race Track Drainage Basin
  - Red Dale Drainage Basin
  - Red Rock Drainage Basin
  - S Highway 79 Drainage Basin
  - S Highway 79 N Drainage Basin
  - S Highway 79 S Drainage Basin
  - South Canyon Drainage Basin
  - South Robbardsdale Drainage Basin
  - South Truck Route Drainage Basin
  - Unnamed Tributary Drainage Basin
  - Wonderland Drive Drainage Basin

