

Rapid City-Pennington County GIS



DISCLAIMER: This map is provided 'as is' without warranty of any representation to accuracy, timeliness, or completeness. The burden for determining accuracy, completeness, timeliness, merchantability, and fitness for or the appropriateness for use rests solely on the user. Rapid City and Pennington County make no warranties, express or implied, as to the use of the map. There are no implied warranties of merchantability or fitness for a particular purpose. This user acknowledges and accepts the limitations of the map, including the fact that the data used to create the map is dynamic and is in the constant state of maintenance, correction, and update. This document does not represent a legal survey of the land. There are no restrictions on the distribution of printed Rapid City/Pennington County maps, other than the City of Rapid City copyright/credit notice must be legible on the print. The user agrees to recognize and honor in perpetuity the copyrights and other proprietary claims for the map(s) established or produced by the City of Rapid City or the vendors furnishing said items to the City of Rapid City.

Legend

- Roads**
- Interstate
- US highway
- SD highway
- County highway
- Main road
- Minor arterial
- Collector
- Ramp
- Paved road
- Unpaved road
- FS highway
- Dike/way
- Paved Alley
- Unpaved Alley
- Unimproved road
- Trail
- Airport Runway
- Not yet coded
- Township/Section Lines
- 0
- 7
- Tax Parcels
- Lot Lines
- Sub-
- Lot Line
- Parcel Line
- County Line

RECEIVED

FEB 19 2014

RAPID CITY COMMUNITY PLANNING & DEVELOPMENT SERVICES



Scale: 1: 1,493

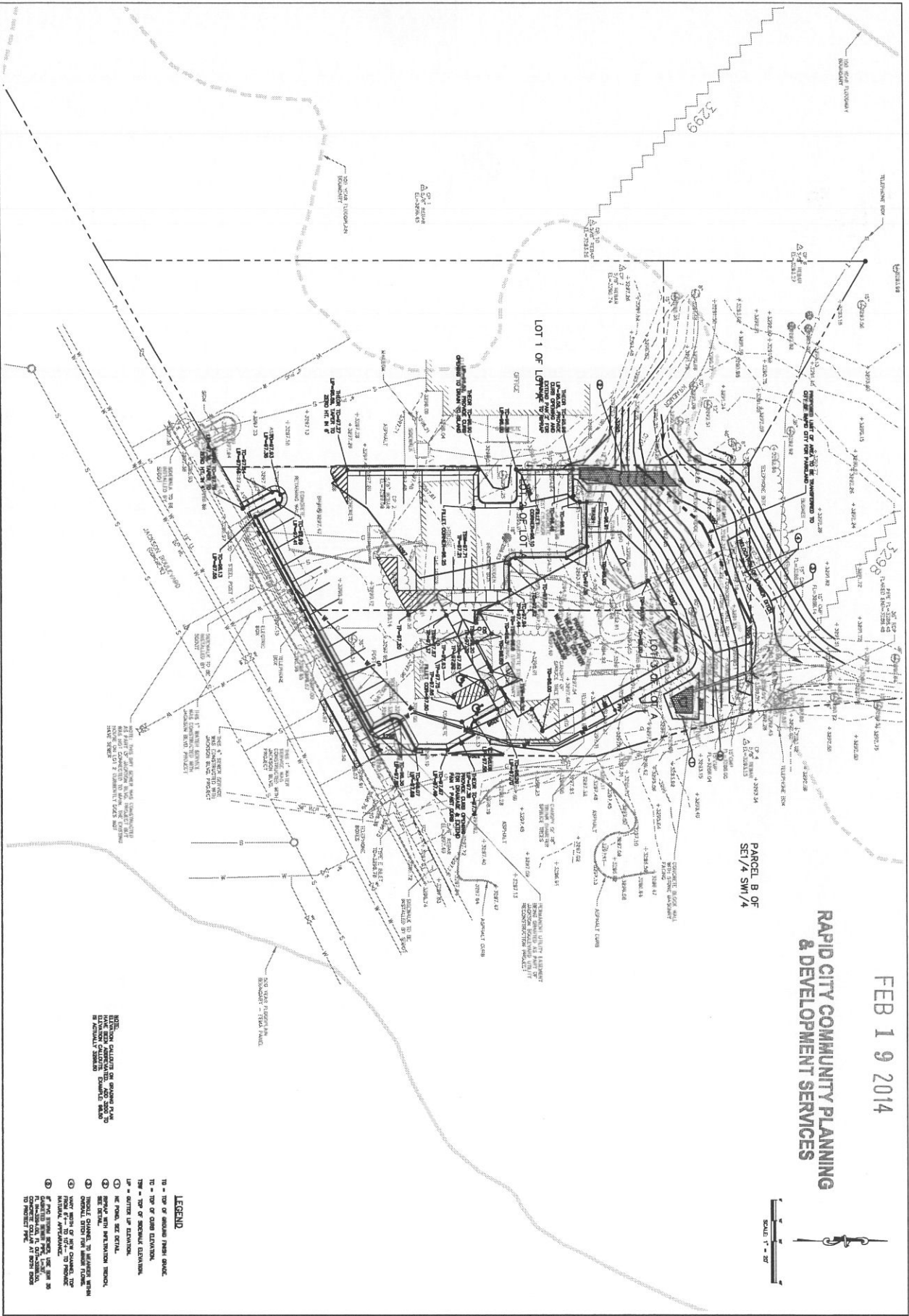
Map Notes:

RECEIVED

FEB 19 2014

RAPID CITY COMMUNITY PLANNING & DEVELOPMENT SERVICES

PARCEL B OF SE1/4 SW1/4



NOTES:
 1. ALL CONSTRUCTION SHALL BE IN ACCORDANCE WITH THE LATEST EDITIONS OF THE SD AND IBC CODES.
 2. THE CONTRACTOR SHALL BE RESPONSIBLE FOR OBTAINING ALL NECESSARY PERMITS AND APPROVALS FROM THE LOCAL, STATE AND FEDERAL AGENCIES.
 3. THE CONTRACTOR SHALL BE RESPONSIBLE FOR OBTAINING ALL NECESSARY PERMITS AND APPROVALS FROM THE LOCAL, STATE AND FEDERAL AGENCIES.

- LEGEND**
- 10 - TOP OF GRADE FINISH GRADE
 - 11 - TOP OF GRADE EXISTING
 - 12 - TOP OF FINISH GRADE
 - 13 - TOP OF FINISH GRADE
 - 14 - TOP OF FINISH GRADE
 - 15 - TOP OF FINISH GRADE
 - 16 - TOP OF FINISH GRADE
 - 17 - TOP OF FINISH GRADE
 - 18 - TOP OF FINISH GRADE
 - 19 - TOP OF FINISH GRADE
 - 20 - TOP OF FINISH GRADE
 - 21 - TOP OF FINISH GRADE
 - 22 - TOP OF FINISH GRADE
 - 23 - TOP OF FINISH GRADE
 - 24 - TOP OF FINISH GRADE
 - 25 - TOP OF FINISH GRADE
 - 26 - TOP OF FINISH GRADE
 - 27 - TOP OF FINISH GRADE
 - 28 - TOP OF FINISH GRADE
 - 29 - TOP OF FINISH GRADE
 - 30 - TOP OF FINISH GRADE
 - 31 - TOP OF FINISH GRADE
 - 32 - TOP OF FINISH GRADE
 - 33 - TOP OF FINISH GRADE
 - 34 - TOP OF FINISH GRADE
 - 35 - TOP OF FINISH GRADE
 - 36 - TOP OF FINISH GRADE
 - 37 - TOP OF FINISH GRADE
 - 38 - TOP OF FINISH GRADE
 - 39 - TOP OF FINISH GRADE
 - 40 - TOP OF FINISH GRADE
 - 41 - TOP OF FINISH GRADE
 - 42 - TOP OF FINISH GRADE
 - 43 - TOP OF FINISH GRADE
 - 44 - TOP OF FINISH GRADE
 - 45 - TOP OF FINISH GRADE
 - 46 - TOP OF FINISH GRADE
 - 47 - TOP OF FINISH GRADE
 - 48 - TOP OF FINISH GRADE
 - 49 - TOP OF FINISH GRADE
 - 50 - TOP OF FINISH GRADE
 - 51 - TOP OF FINISH GRADE
 - 52 - TOP OF FINISH GRADE
 - 53 - TOP OF FINISH GRADE
 - 54 - TOP OF FINISH GRADE
 - 55 - TOP OF FINISH GRADE
 - 56 - TOP OF FINISH GRADE
 - 57 - TOP OF FINISH GRADE
 - 58 - TOP OF FINISH GRADE
 - 59 - TOP OF FINISH GRADE
 - 60 - TOP OF FINISH GRADE
 - 61 - TOP OF FINISH GRADE
 - 62 - TOP OF FINISH GRADE
 - 63 - TOP OF FINISH GRADE
 - 64 - TOP OF FINISH GRADE
 - 65 - TOP OF FINISH GRADE
 - 66 - TOP OF FINISH GRADE
 - 67 - TOP OF FINISH GRADE
 - 68 - TOP OF FINISH GRADE
 - 69 - TOP OF FINISH GRADE
 - 70 - TOP OF FINISH GRADE
 - 71 - TOP OF FINISH GRADE
 - 72 - TOP OF FINISH GRADE
 - 73 - TOP OF FINISH GRADE
 - 74 - TOP OF FINISH GRADE
 - 75 - TOP OF FINISH GRADE
 - 76 - TOP OF FINISH GRADE
 - 77 - TOP OF FINISH GRADE
 - 78 - TOP OF FINISH GRADE
 - 79 - TOP OF FINISH GRADE
 - 80 - TOP OF FINISH GRADE
 - 81 - TOP OF FINISH GRADE
 - 82 - TOP OF FINISH GRADE
 - 83 - TOP OF FINISH GRADE
 - 84 - TOP OF FINISH GRADE
 - 85 - TOP OF FINISH GRADE
 - 86 - TOP OF FINISH GRADE
 - 87 - TOP OF FINISH GRADE
 - 88 - TOP OF FINISH GRADE
 - 89 - TOP OF FINISH GRADE
 - 90 - TOP OF FINISH GRADE
 - 91 - TOP OF FINISH GRADE
 - 92 - TOP OF FINISH GRADE
 - 93 - TOP OF FINISH GRADE
 - 94 - TOP OF FINISH GRADE
 - 95 - TOP OF FINISH GRADE
 - 96 - TOP OF FINISH GRADE
 - 97 - TOP OF FINISH GRADE
 - 98 - TOP OF FINISH GRADE
 - 99 - TOP OF FINISH GRADE
 - 100 - TOP OF FINISH GRADE

HEALTH AND WELLNESS CENTER
 LOT 2 OF LOT A AND LOT 3 OF LOT A
 OF THE SE1/4 SW1/4 OF SECTION 3, T1N, R7E, BHM
 RAPID CITY, PENNINGTON COUNTY, SD

File Number	2013-001
Project Name	HEALTH AND WELLNESS CENTER
Site Address	LOT 2 OF LOT A AND LOT 3 OF LOT A OF THE SE1/4 SW1/4 OF SECTION 3, T1N, R7E, BHM
Drawn By	AM
Checked By	AM
Design Date	DECEMBER 2013
Design By	AM
Checked By	AM
Scale	AS SHOWN
Revision	0

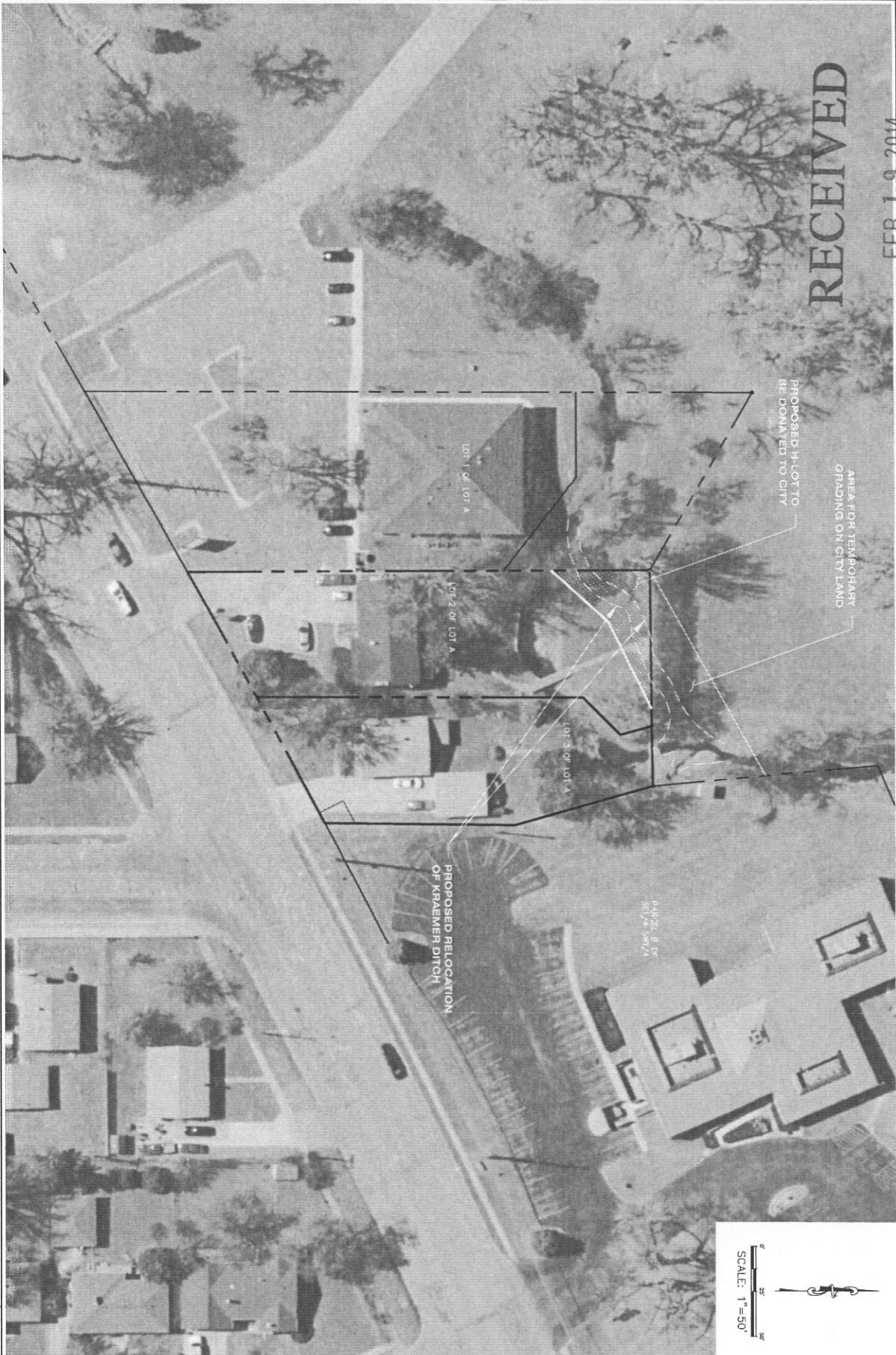
PRELIMINARY
2/19/14



FMG, Inc.
 3700 Sturgis Road
 Rapid City, SD 57702-0317
 (605) 342-1100 FAX (605) 342-4222
 www.fmgengineering.com

Sheet Number:
C4 of C8

Grading Plan



RECEIVED

FEB 19 2014

RAPID CITY COMMUNITY PLANNING & DEVELOPMENT SERVICES

Sheet Number	1
Total Sheets	1

HEALTH AND WELLNESS CENTER
 LOT 2 OF LOT A AND LOT 3 OF LOT A
 OF THE SE1/4 SW1/4 OF SECTION 3, T1N, R7E, BHM
 RAPID CITY, PENNINGTON COUNTY, SD

Prepared by: [Name]
 Drawn by: [Name]
 Checked by: [Name]

FEBRUARY 2014

F M G, Inc.
 3700 Sturgis Road
 Rapid City, SD 57702-0317
 (605) 342-4105 FAX (605) 342-4222
 www.fmgengineering.com