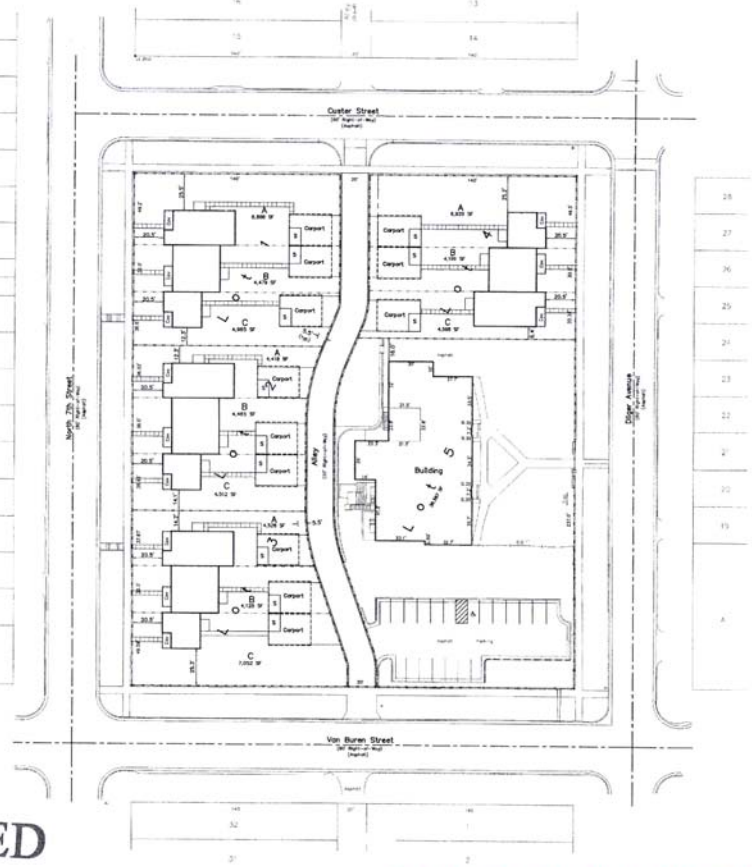
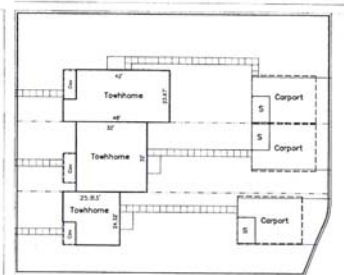


REPLACES ADDITION



1" = 20'  
 April 25, 2013  
 Revised November 14, 2013  
 Revised December 11, 2013  
 Revised December 26, 2013

Typical Unit Details  
 1" = 20"



ONE CALL  
 BEFORE DIGGING  
 1-800-485-7434

RECEIVED

DEC 27 2013

RAPID CITY COMMUNITY PLANNING  
 & DEVELOPMENT SERVICES

PRELIMINARY

Fisk Land Surveying &  
 Consulting Engineers, Inc.  
 1032 West 10th Street - 2nd Floor  
 Rapid City, SD 57701  
 (605) 342-2222  
 www.fiskland.com

The information herein  
 is for informational purposes  
 only and does not constitute  
 an offer of insurance or any  
 other financial product. It is  
 not intended to be used as  
 a basis for any investment  
 decision.

Proposed Site Plan  
 Black Hills Area Habitat for Humanity  
 Garfield Green  
 Block 76, North Rapid Addition #2  
 Rapid City, Pennington County, South Dakota

Screened by: MJD  
 Date: 3/22/13  
 Drawn by: S/Other  
 Date: 4/24/13  
 Checked by: JF  
 Revision  
 12/9/13-Layout

Project No.  
 13-03-07  
 Proposed  
 Site Plan

3 of 12

**Plat of Lots 1 through 5 of Block 76, North Rapid Addition #2  
and Dedicated Right-of-Way**

located in (and formerly all of) Block 76, North Rapid Addition #2  
Section 36, T2N, R7E, B.H.M.

Rapid City, Pennington County, South Dakota

Prepared by: Fisk Land Surveying  
& Consulting Engineers, Inc.  
P.O. Box 8154, Rapid City, SD 57709  
605-348-1536  
Project # 13-03-07

All measurements shown are measured this survey  
see previous plats for record information

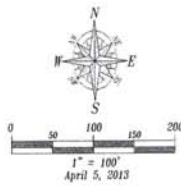
Utility & Minor Drainage Easements:  
8' on the interior sides of all lot lines.

All major drainage easements shown herein shall be kept free of all obstructions,  
including but not limited to buildings, walls, fences, hedges, trees and shrubs.  
These easements grant to all public authorities the right to construct, operate,  
maintain, inspect and repair such improvements and structures as it deems expedient  
to facilitate drainage from any source.

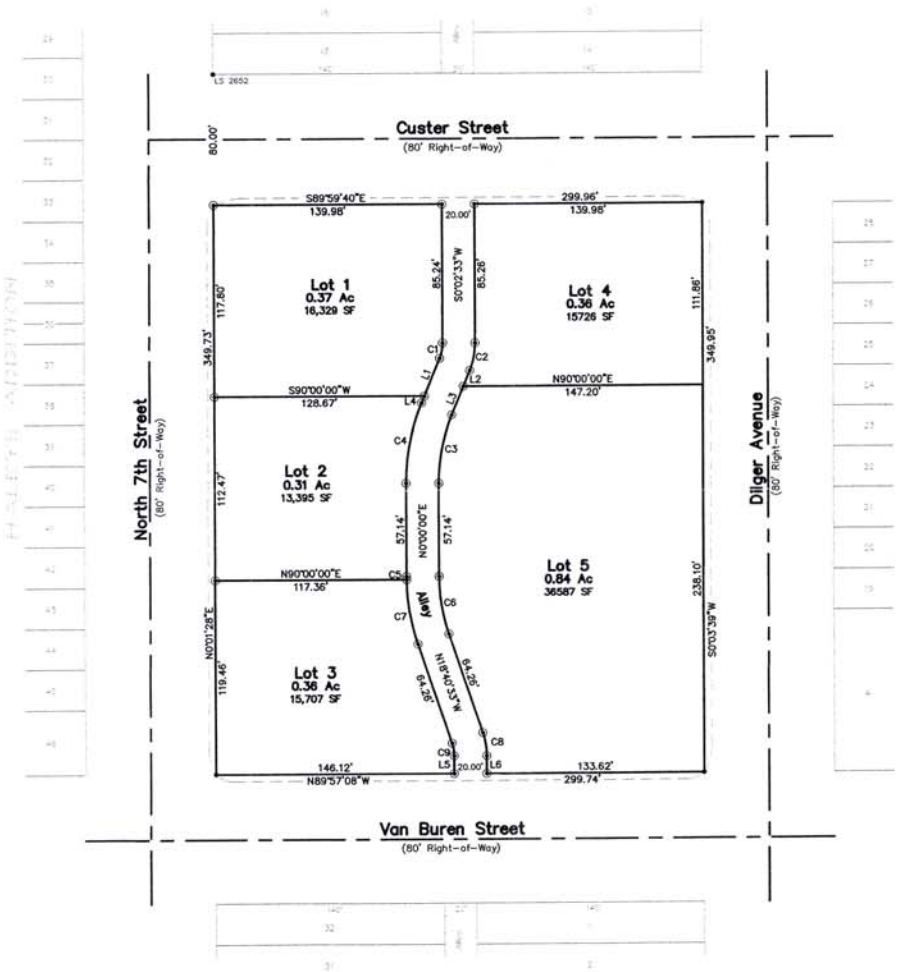
**LEGEND**

- = Found Survey Monument, #5 Rebar or as noted
- = Found or Set Rebar with cap marked "RW FISK 6565"

PRELIMINARY



Basis of Bearings  
Grid North as  
determined by GPS



NUM	DELTA	ARC	RADIUS	BEARING	DISTANCE
C1	22°10'15"	9.67'	25.00'	N110°74'E	9.61'
C2	22°10'15"	17.41'	45.00'	N110°74'E	17.30'
C3	22°12'48"	42.65'	110.00'	S11°06'24"W	42.38'
C4	22°12'48"	50.40'	130.00'	S11°06'24"W	50.09'
C5	0°51'28"	1.95'	130.00'	S0°25'44"E	1.95'
C6	18°40'32"	35.85'	110.00'	S9°20'16"E	35.70'
C7	17°40'04"	40.43'	130.00'	S9°46'04"E	40.28'
C8	18°43'06"	14.70'	45.00'	N9°19'00"W	14.64'
C9	18°43'06"	8.17'	25.00'	N9°19'00"W	8.13'

NUM	BEARING	DISTANCE
L1	N22°12'48"E	24.97'
L2	N22°12'48"E	10.41'
L3	N22°12'48"E	19.14'
L4	N22°12'48"E	4.58'
L5	S0°02'33"W	11.00'
L6	S0°02'33"W	11.00'

RAPID CITY COMMUNITY PLANNING  
& DEVELOPMENT SERVICES

DEC 27 2013

RECEIVED