

EXHIBIT 'A'
NO BUILD EASEMENT
LOT 7, BLOCK 3 OF
SKYLINE PINES SUBDIVISION
 LOCATED IN THE SW1/4
 SECTION 11, T1N, R7E, B.H.M.
 RAPID CITY, PENNINGTON COUNTY, SOUTH DAKOTA



OCTOBER 7, 2013



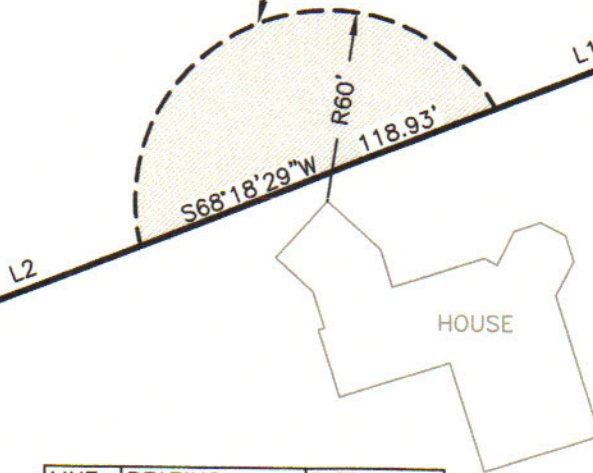
SCALE 1" = 60'

SECTION 1/16 LINE

PEVANS PARKWAY

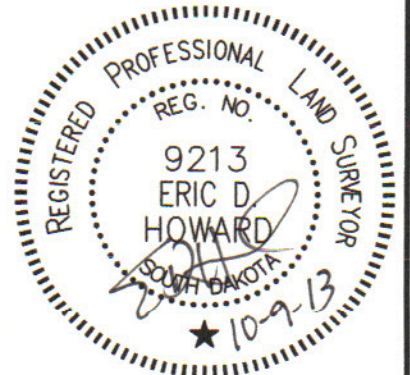
LOT 7

NO BUILD EASEMENT
 TO BE CREATED
 THIS DOCUMENT.



| LINE | BEARING | DISTANCE |
|------|-------------|----------|
| L1 | S68°18'29"W | 64.81' |
| L2 | N68°18'29"E | 75.91' |

LOT 8



RENNER & ASSOCIATES, LLC.

616 SIXTH ST. * RAPID CITY, SD 57701
 PHONE: 605/721-7310 FAX: 605/721-7313
 ERIC@RENNERASSOC.COM



CITY HALL 1903