



728 Sixth St. ▪ Rapid City, SD 57701 ▪ Ph: 605.348.2268 ▪ Fx: 605.348.6506 ▪ Email: info@wyssassociates.com ▪ www.wyssassociates.com

June 12, 2013

Alex DeSmidt
Project Manager, Rapid City Parks and Recreation
515 West blvd.
Rapid City, SD 57701

Re: Additional Survey work requested by City

Alex,

First, I want to thank you again for working with Wyss Associates, Inc on the Sweet Creek Spur Trail. We believe that this trail will be a critical spur for the Rapid City overall trail system.

As requested we have reviewed the revised trail alignment (exhibit AS1.1) and discussed the need for additional survey work to be completed by our Civil Engineer, FMG Engineering. Below I have outlined the additional service fees to complete these requested scope of service changes:

FMG Engineering (survey, and integration into base file): \$6800.00

Wyss Associates (General Coordination and project management) \$290.00

Additional Service request #1 total: \$7090.00

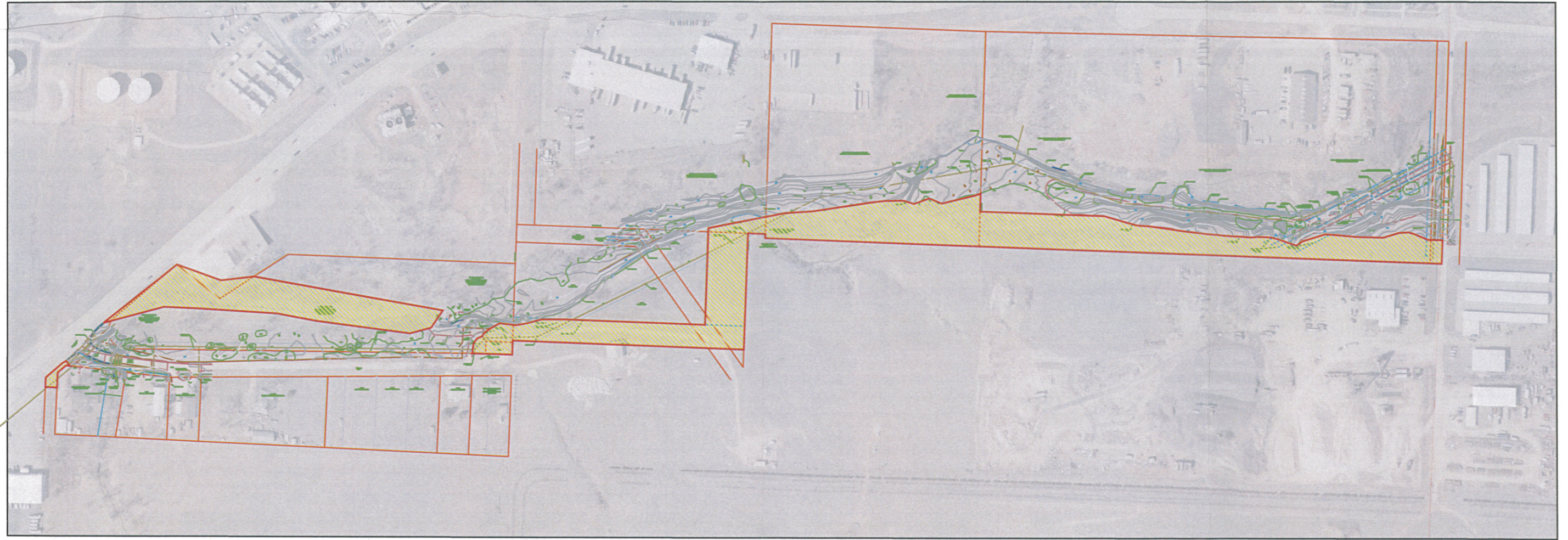
As it stands today we need a month from date of notice to proceed to survey and draft the maps.
Direct expenses of travel, copying and applicable sales tax will be invoiced at direct cost.

Alex, we look forward to the opportunity of working with you and the city in the completion of this exciting project.
Please call me if you have any questions concerning the above information.

Sincerely,



Mark Jobman, ASLA, IA-LA
Senior Landscape Architect



SCALE: 1:300