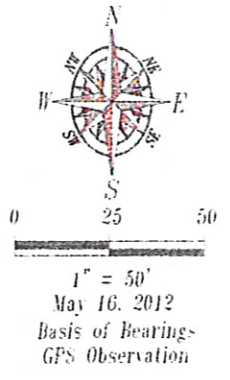
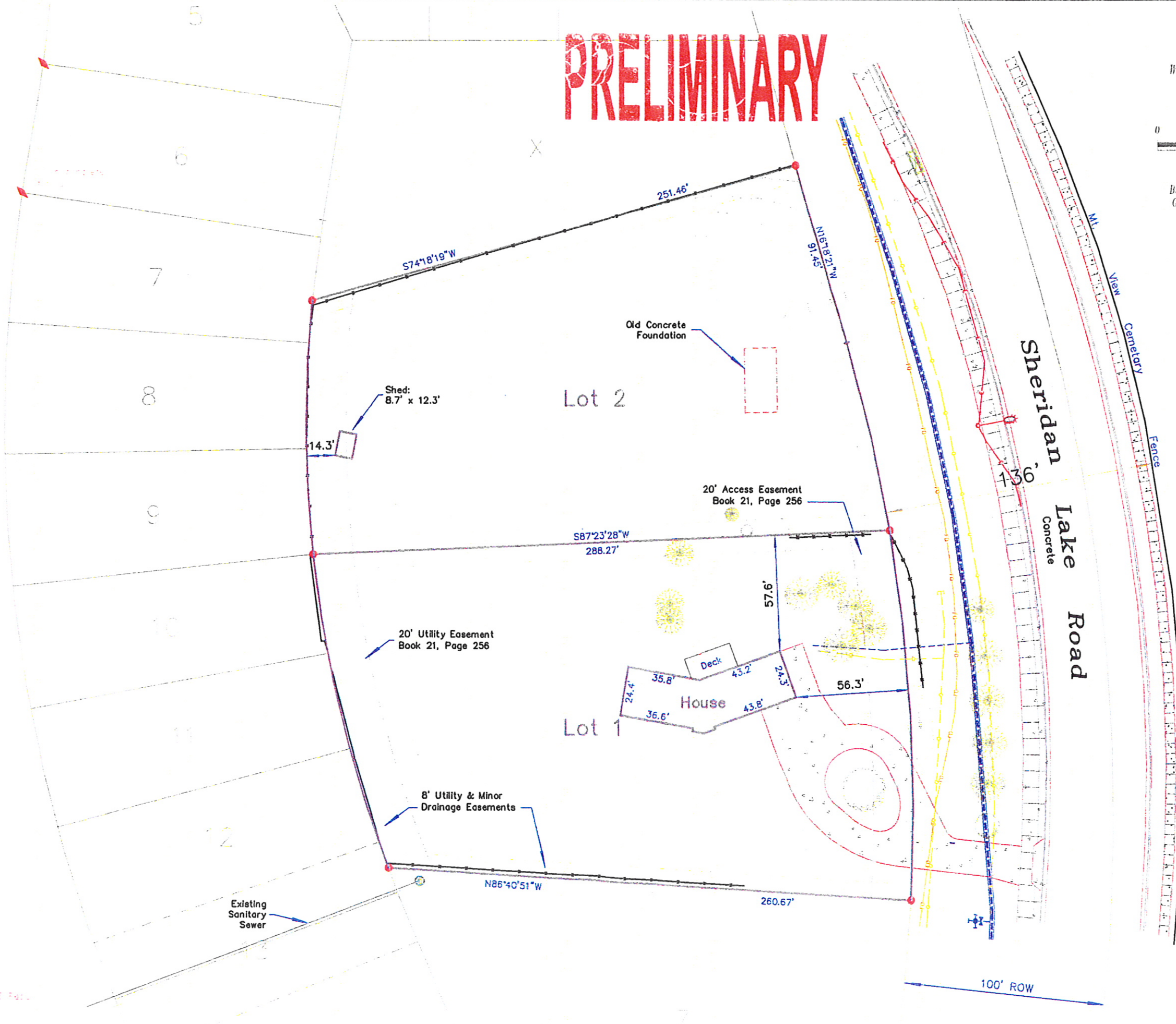


PRELIMINARY



Stirling Street



Fisk Land Surveying
& Consulting, Inc.
1082 Main Street (P.O. Box 8154)
Rapid City, South Dakota 57709
(605) 348-1536
(605) 341-1112 (fax)

Site Plan
Lots 1 and 2 of Lot Y of Block 2
Strathavon Addition Revised
Pennington County, South Dakota

Surveyed by:	ML
Date:	4/12
Drawn by:	RWF, CD
Checked by:	JF
Revisions:	
Existing Site Map:	
Project No.:	12-04-03