

ENGINEERING
LANDSCAPE ARCHITECTURE
LAND PLANNING

DREAM DESIGN
INTERNATIONAL, INC.

CONSTRUCTION OBSERVATION
REAL ESTATE DEVELOPMENT
PROPERTY MANAGEMENT

May 18, 2012

RECEIVED

MAY 18 2012

Ms. Nicole Lecy
300 Sixth Street
Rapid City, SD 57701

**RAPID CITY COMMUNITY PLANNING
& DEVELOPMENT SERVICES**

RE: Loading/Unloading zone and eliminated or Relocated Parking, Presidents Plaza, Tract A of Block 95 in the Original Town of Rapid City, Section 1, T1N, R7E

Dear Ms. Lecy:

The purpose of this letter is to request the designation of a loading and unloading area located along 6th Street fronting the proposed hotel entrance in the Presidents Plaza, as well as to allow the relocation of an accessible parking space to St. Joseph. We are also requesting the removal of parking spaces along 6th and St. Joseph Streets.

By creating a loading/unloading area in front of the proposed hotel, seven parking spaces will be removed from the east side of 6th Street. One of these parking spaces is an accessible space which we propose relocating to St. Joseph Street. As part of the proposed parking structure, the exit/entrance to the parking garage will be located to the east of the current parking entrance. The location of this proposed approach will result in the loss of four parking stalls. Attached you will find a copy of exhibits relating to the addition of the loading and unloading area along 6th Street as well as the location of the existing and proposed parking stalls along 6th Street and St. Joseph Street. Included are:

1. Existing Parking exhibit
2. Proposed Parking exhibit

Please contact me with any questions or concerns regarding this matter.

Sincerely,
DREAM DESIGN INTERNATIONAL, INC.

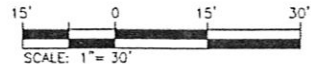
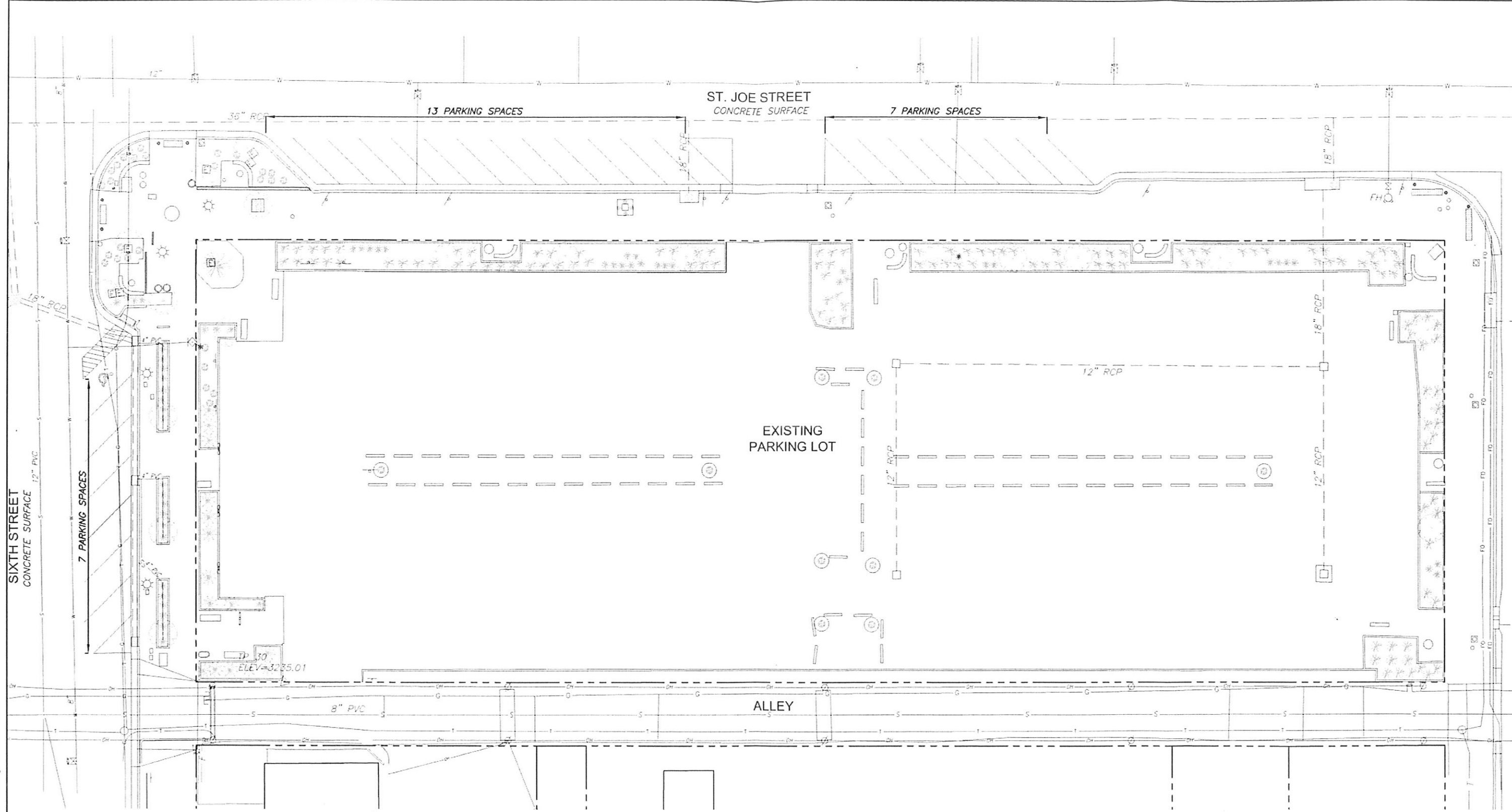


Terry Cash, PE

Enclosures

528 KANSAS CITY STREET, SUITE 4 ♦ RAPID CITY, SOUTH DAKOTA 57701
PHONE: 605.348.0538 ♦ FAX: 605.348.0545 ♦ DREAMDESIGNINC.COM

designing for a better world



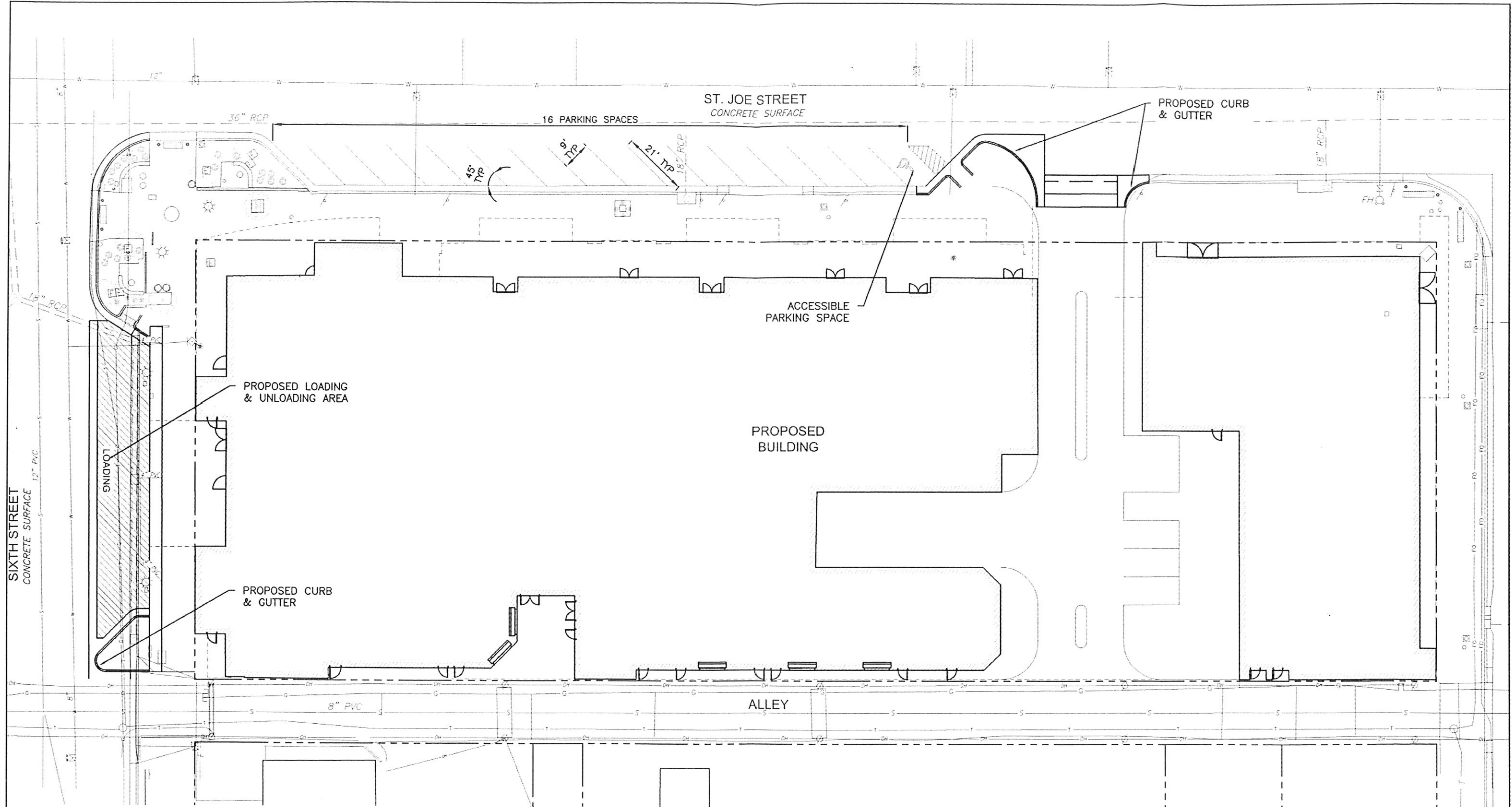
**DREAM DESIGN
INTERNATIONAL, INC.**
ENGINEERING, LANDSCAPE ARCHITECTURE,
LAND PLANNING, CONSTRUCTION ADMINISTRATION
528 KANSAS CITY STREET, SUITE 4, RAPID CITY, SD 57701
PHONE: (605) 348-0538 FAX: (605) 348-0545 WWW.DREAMDESIGNINC.COM

**EXISTING PARKING
PRESIDENT'S PLAZA**
RAPID CITY, SOUTH DAKOTA
APRIL 16, 2012

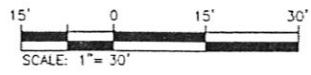
LEGEND

- EXISTING CURB & GUTTER
- EXISTING ACCESSIBLE PARKING SPACE

X:\100-449-144\Drawings\EXHIBIT\PROPOSED PARKING.dwg, 4/16/2012 5:22:52 PM



X:\100-449-444 Drawings\EXHIBITS\PROPOSED PARKING.dwg, 4/16/2012 5:23:19 PM



DREAM DESIGN
INTERNATIONAL, INC.
 ENGINEERING, LANDSCAPE ARCHITECTURE,
 LAND PLANNING, CONSTRUCTION ADMINISTRATION
 528 KANSAS CITY STREET, SUITE 4, RAPID CITY, SD 57701
 PHONE: (605) 348-0538 FAX: (605) 348-0545 WWW.DREAMDESIGNINC.COM

PROPOSED PARKING
PRESIDENT'S PLAZA
 RAPID CITY, SOUTH DAKOTA
 APRIL 16, 2012

LEGEND

-  EXISTING CURB & GUTTER
-  PROPOSED BUILDING LINE
-  PROPOSED ENTRANCE
-  PROPOSED OVERHEAD DOOR ENTRANCE