

*Rapid City Arterial Safety Study*

---

**APPENDIX A      CITYWIDE ARTERIAL SEGMENT RANKINGS**

Total Rank	Severe Rank	Segment Laneage	Road Segment Name	From	To	Avg ADT	Total Crashes	Fatal Crashes	Injury Crashes	PDO Crashes	Segment Length (mi)	Total Crash Rate	Reference Population Citywide Avg. Total Rate	Total Critical Crash Rate	Total CC Ratio	Severe Crash Rate	Reference Population Citywide Avg. Severe Rate	Severe Critical Crash Rate	Severe CC Ratio
46	52	2	44TH ST	RAIDER	MAIN	4,974	8	0	2	6	0.62	2.38	1.42	2.64	0.90	0.59	0.29	0.92	0.65
180	191	2	44TH ST	MAIN ST W	SOUTH CANYON RD	4,859	1	0	0	1	0.19	0.97	1.42	3.83	0.25	0.00	0.29	1.65	0.00
31	57	4	5TH ST	MINNESOTA	FAIRMONT	11,462	18	1	2	15	1.14	1.26	0.77	1.19	1.06	0.21	0.14	0.34	0.62
52	65	5	5TH ST	ST PATRICK	COLUMBUS	19,215	26	0	5	21	0.54	2.27	1.93	2.65	0.86	0.44	0.38	0.72	0.60
64	153	5	5TH ST	COLUMBUS	KANSAS CITY	20,062	5	0	0	5	0.07	3.14	1.93	4.05	0.77	0.00	0.38	1.50	0.00
72	130	5	5TH ST	FAIRMONT	MEADE	19,202	11	1	0	10	0.24	2.22	1.93	3.06	0.73	0.20	0.38	0.94	0.22
123	80	5	5TH ST	MEADE	ST PATRICK	19,202	6	0	2	4	0.20	1.42	1.93	3.16	0.45	0.47	0.38	0.99	0.48
146	177	5	5TH ST	MAIN	OMAHA	19,436	3	0	0	3	0.11	1.34	1.93	3.68	0.36	0.00	0.38	1.28	0.00
172	118	5	5TH ST	NEW YORK	NORTH	19,877	3	0	1	2	0.15	0.90	1.93	3.33	0.27	0.30	0.38	1.08	0.28
192	70	5	5TH ST	OMAHA	NEW YORK	19,665	2	0	2	0	0.16	0.60	1.93	3.33	0.18	0.60	0.38	1.08	0.55
221	221	5	5TH ST	ST JOSEPH	MAIN	19,436	0	0	0	0	0.05	0.00	1.93	4.50	0.00	0.00	0.38	1.76	0.00
223	223	5	5TH ST	KANSAS CITY	ST JOSEPH	20,062	0	0	0	0	0.03	0.00	1.93	5.68	0.00	0.00	0.38	2.50	0.00
247	247	5	5TH ST	CATRON	MINNESOTA	6,178	0	0	0	0	0.90	0.00	1.93	2.94	0.00	0.00	0.38	0.87	0.00
16	30	2	ANAMOSA ST	WEST BLVD N	HAINES	3,934	8	0	2	6	0.45	4.08	1.42	3.08	1.33	1.02	0.29	1.18	0.87
34	71	2	ANAMOSA ST	HAINES	LACROSSE	8,510	19	0	3	16	0.93	2.20	1.42	2.15	1.03	0.35	0.29	0.65	0.54
17	26	3	ANAMOSA ST	LACROSSE	WALMART ACCESS	9,845	8	0	2	6	0.19	4.01	1.40	3.03	1.32	1.00	0.25	1.08	0.93
83	90	5	CAMBELL ST	ST PATRICK	OMAHA	19,556	31	0	5	26	0.87	1.66	1.93	2.49	0.67	0.27	0.38	0.64	0.42
99	28	5	CAMBELL ST	MINNESOTA	FAIRMONT	14,608	11	0	5	6	0.42	1.63	1.93	2.88	0.56	0.74	0.38	0.84	0.88
206	206	5	CAMBELL ST	FAIRMONT	ST PATRICK	19,802	1	0	0	1	0.28	0.17	1.93	2.94	0.06	0.00	0.38	0.88	0.00
120	168	5	CAMBELL ST E	OMAHA	NORTH	21,799	11	0	0	11	0.36	1.29	1.93	2.77	0.46	0.00	0.38	0.79	0.00
240	240	2	CAMBELL ST NB	CATRON	MINNESOTA	5,983	0	0	0	0	0.43	0.00	1.42	2.77	0.00	0.00	0.12	0.64	0.00
234	234	2	CAMBELL ST SB	CATRON	MINNESOTA	5,983	0	0	0	0	0.43	0.00	1.42	2.77	0.00	0.00	0.29	1.00	0.00
30	128	2	CANYON LAKE DR	SHERIDAN LAKE	MOUNTAIN VIEW	11,906	14	0	1	13	0.43	2.52	1.42	2.34	1.08	0.18	0.29	0.76	0.24
71	132	2	CANYON LAKE DR	32ND	SHERIDAN LAKE	11,405	12	0	1	11	0.60	1.60	1.42	2.20	0.73	0.13	0.29	0.68	0.20
111	111	4	CANYON LAKE DR	HILLSVIEW	32ND	7,900	5	0	1	4	0.83	0.70	0.77	1.38	0.51	0.14	0.14	0.44	0.32
225	225	4	CANYON LAKE DR	HILLSVIEW	RED DALE	7,457	0	0	0	0	0.04	0.00	0.77	5.22	0.00	0.00	0.14	3.04	0.00
227	227	4	CANYON LAKE DR	JACKSON	RED DALE	7,457	0	0	0	0	0.19	0.00	0.77	2.23	0.00	0.00	0.14	0.94	0.00
75	81	5	CATHEDRAL DR	MT RUSHMORE	SENIOR HIGH RISE	14,110	4	0	1	3	0.08	3.12	1.93	4.34	0.72	0.78	0.38	1.66	0.47
97	48	3	CATHEDRAL DR	SENIOR HIGH RISE	5TH	15,092	2	0	1	1	0.05	2.37	1.40	4.11	0.58	1.19	0.25	1.74	0.68
191	129	4	CATRON BLVD	5TH	SD HWY 79	10,776	3	0	1	2	1.11	0.23	0.77	1.21	0.19	0.08	0.14	0.35	0.22
60	23	4	CATRON BLVD	US-16	5TH	11,085	23	0	7	16	2.18	0.87	0.77	1.07	0.81	0.26	0.14	0.28	0.95
104	143	2	CATRON BLVD	SHERIDAN LAKE	US-16	9,762	15	0	1	14	1.31	1.07	1.42	1.98	0.54	0.07	0.29	0.56	0.13
236	236	3	CATRON BLVD	FRONTAGE US 16	US-16	9,762	0	0	0	0	0.07	0.00	1.40	4.39	0.00	0.00	0.25	1.92	0.00
40	149	2	COUNTRY RD	ELK VALE	STUDY LIMIT	1,250	2	0	0	2	0.23	6.26	1.42	6.45	0.97	0.00	0.29	3.42	0.00
51	8	2	COUNTRY RD	HAINES	NIKE	1,317	8	0	4	4	2.46	2.25	1.42	2.60	0.87	1.13	0.29	0.90	1.25
87	16	2	COUNTRY RD	ELK VALE	DYESS	1,250	3	0	2	1	0.96	2.27	1.42	3.51	0.65	1.52	0.29	1.44	1.05
19	35	2	DEADWOOD AVE	I-90	STUDY LIMIT	2,362	14	0	3	11	1.73	3.13	1.42	2.46	1.27	0.67	0.29	0.82	0.82
21	31	4	DEADWOOD AVE	UNIVERSAL	I-90	14,293	3	0	1	2	0.05	3.83	0.77	3.04	1.26	1.28	0.14	1.47	0.87
39	148	3	DEADWOOD AVE	OMAHA	KREBS	17,145	8	0	0	8	0.16	2.66	1.40	2.69	0.99	0.00	0.25	0.89	0.00
59	151	3	DEADWOOD AVE	OMAHA	KREBS	17,145	3	0	0	3	0.05	3.22	1.40	3.95	0.81	0.00	0.25	1.64	0.00
85	156	4	DEADWOOD AVE	KREBS	CEMENT PLANT RD	17,145	3	0	0	3	0.12	1.28	0.77	1.93	0.66	0.00	0.14	0.76	0.00
164	137	5	DEADWOOD AVE	COMMERCE	CEMENT PLANT RD	17,145	7	0	1	6	0.45	0.83	1.93	2.77	0.30	0.12	0.38	0.79	0.15
169	53	5	DEADWOOD AVE	ACCESS	PLAZA	13,691	8	1	4	3	0.71	0.75	1.93	2.68	0.28	0.47	0.38	0.74	0.64
209	209	5	DEADWOOD AVE	PLAZA	UNIVERSAL	14,293	0	0	0	0	0.30	0.00	1.93	3.10	0.00	0.00	0.38	0.96	0.00
186	194	3	DEADWOOD AVE NB	OMAHA	KREBS	17,145	1	0	0	1	0.06	0.84	1.40	3.60	0.23	0.00	0.25	1.42	0.00
80	85	2	DYESS AVE	MALL	SEGER	3,001	4	0	1	3	0.55	2.22	1.42	3.16	0.70	0.56	0.29	1.23	0.45
149	49	2	DYESS AVE	N LIMIT	COUNTRY	2,878	3	0	2	1	1.03	0.93	1.42	2.66	0.35	0.62	0.29	0.94	0.66
182	105	2	DYESS AVE	COUNTRY	SEGER	2,878	2	0	1	1	0.97	0.66	1.42	2.71	0.24	0.33	0.29	0.96	0.34
5	6	5	E NORTH ST	SPRUCE	CAMBELL	17,340	30	0	6	24	0.26	6.16	1.93	3.07	2.01	1.23	0.38	0.94	1.31
32	147	5	E NORTH ST	LACROSSE	SPRUCE	17,340	7	0	0	7	0.09	4.22	1.93	4.01	1.05	0.00	0.38	1.47	0.00
101	161	2	E NORTH ST	EGLIN	I-90	6,707	2	0	0	2	0.12	2.26	1.42	4.07	0.56	0.00	0.29	1.80	0.00
116	42	5	E NORTH ST	MILWAUKEE	LACROSSE	16,044	6	0	3	3	0.22	1.57	1.93	3.23	0.49	0.78	0.38	1.03	0.76
171	186	3	E NORTH ST	EGLIN	I-90	6,707	1	0	0	1	0.12	1.11	1.40	4.00	0.28	0.00	0.25	1.67	0.00
178	189	2	E NORTH ST	CENTURY	ANAMOSA	8,854	1	0	0	1	0.11	0.98	1.42	3.85	0.25	0.00	0.29	1.66	0.00
245	245	4	E NORTH ST	E MALL	I 90	2,694	0	0	0	0	0.08	0.00	0.77	5.69	0.00	0.00	0.14	3.39	0.00
203	107	2	E NORTH ST NB	ANAMOSA	EGLIN	6,707	1	0	1	0	0.43	0.32	1.42	2.68	0.12	0.32	0.29	0.95	0.33
214	214	2	E NORTH ST NB	CAMBELL	ANAMOSA	8,854	0	0	0	0	0.20	0.00	1.42	3.10	0.00	0.00	0.29	1.19	0.00





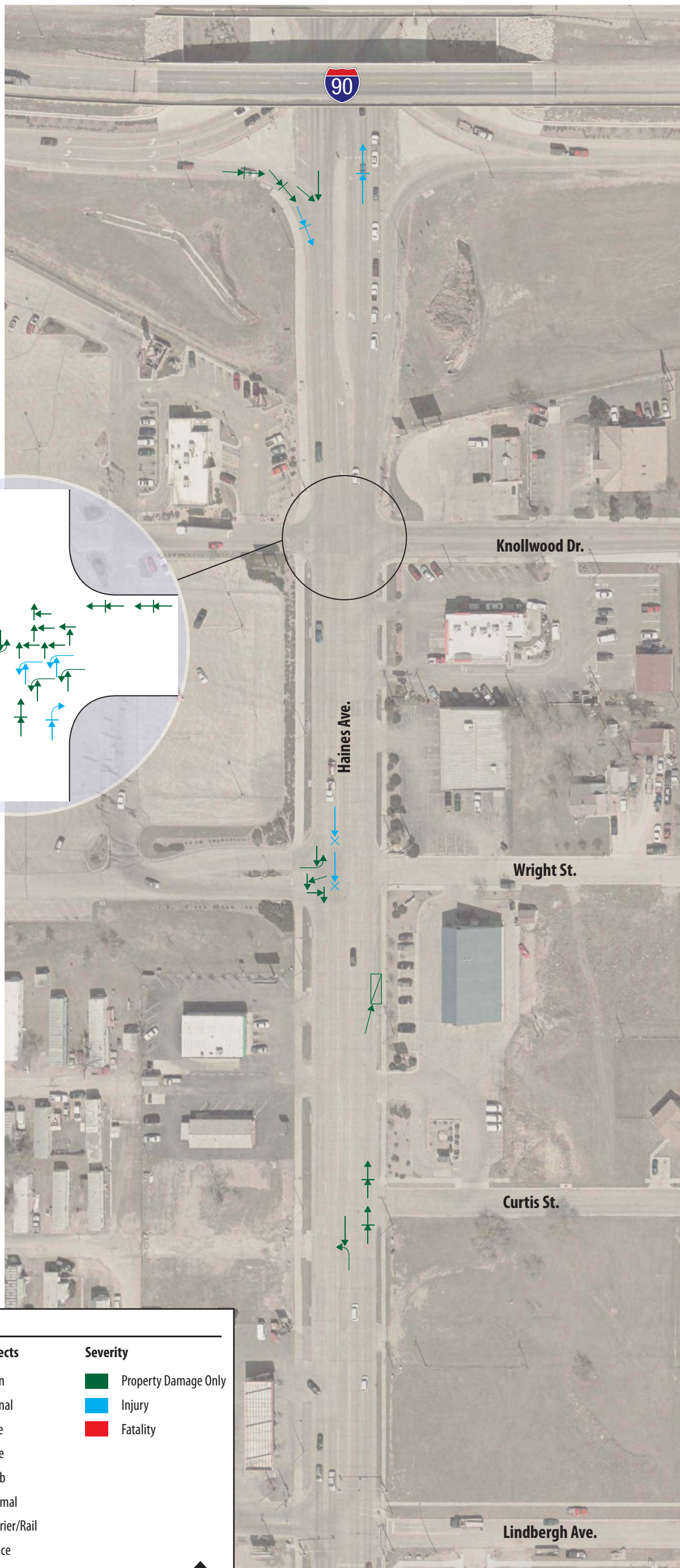


Total Rank	Severe Rank	Segment Laneage	Road Segment Name	From	To	Avg ADT	Total Crashes	Fatal Crashes	Injury Crashes	PDO Crashes	Segment Length (mi)	Total Crash Rate	Reference Population Citywide Avg. Total Rate	Total Critical Crash Rate	Total CC Ratio	Severe Crash Rate	Reference Population Citywide Avg. Severe Rate	Severe Critical Crash Rate	Severe CC Ratio
20	146	3	TWILIGHT DR	CONCOURSE	RESERVOIR	3,869	15	0	0	15	1.17	3.02	1.40	2.37	1.27	0.00	0.25	0.72	0.00
82	155	3	TWILIGHT DR	SD HWY 44	COUNCOURSE	7,535	5	0	0	5	0.31	1.97	1.40	2.82	0.70	0.00	0.25	0.96	0.00
36	45	2	UNIVERSAL DR	STURGIS	DEADWOOD	4,869	19	0	4	15	1.66	2.15	1.42	2.14	1.01	0.45	0.29	0.64	0.70
<b>49</b>	<b>7</b>	<b>2</b>	<b>US HWY 16 NB</b>	<b>NECK YOKE</b>	<b>BUSTED 5 CT</b>	<b>6,199</b>	<b>41</b>	<b>0</b>	<b>8</b>	<b>33</b>	<b>3.68</b>	<b>1.64</b>	<b>1.42</b>	<b>1.83</b>	<b>0.90</b>	<b>0.32</b>	<b>0.12</b>	<b>0.25</b>	<b>1.26</b>
43	11	2	US HWY 16 NB	NECK YOKE	MOON MEADOWS	6,199	19	0	4	15	1.37	2.04	1.42	2.12	0.96	0.43	0.12	0.36	1.19
115	166	2	US HWY 16 NB	MOON MEADOW	CATRON	6,199	7	0	0	7	0.92	1.12	1.42	2.28	0.49	0.00	0.12	0.43	0.00
140	63	2	US HWY 16 NB	PROMISE	CATHEDRAL	6,318	13	1	2	10	2.49	0.75	1.42	1.92	0.39	0.17	0.12	0.29	0.61
204	204	2	US HWY 16 NB	CATRON	PROMISE	6,318	1	0	0	1	0.50	0.29	1.42	2.62	0.11	0.00	0.12	0.57	0.00
113	165	2	US HWY 16 SB	NECK YOKE	BUSTED 5 CT	6,199	23	0	0	23	3.71	0.91	1.42	1.83	0.50	0.00	0.12	0.25	0.00
41	10	2	US HWY 16 SB	NECK YOKE	MOON MEADOWS	6,199	19	0	4	15	1.37	2.05	1.42	2.12	0.97	0.43	0.12	0.36	1.20
110	94	2	US HWY 16 SB	PROMISE	CATHEDRAL	6,318	17	0	2	15	2.49	0.99	1.42	1.92	0.51	0.12	0.12	0.29	0.41
153	180	2	US HWY 16 SB	CATRON	PROMISE	6,318	3	0	0	3	0.50	0.87	1.42	2.62	0.33	0.00	0.12	0.57	0.00
156	181	2	US HWY 16 SB	MOON MEADOW	FRONTAGE	6,199	2	0	0	2	0.31	0.96	1.42	3.02	0.32	0.00	0.12	0.76	0.00
237	237	2	US HWY 16 SB	FRONTAGE US 16	CATRON	6,199	0	0	0	0	0.58	0.00	1.42	2.54	0.00	0.00	0.12	0.54	0.00
112	164	2	W CHICAGO ST	44TH	STURGIS	5,926	5	0	0	5	0.60	1.29	1.42	2.54	0.51	0.00	0.12	0.54	0.00
168	100	2	W CHICAGO ST EB	ACCESS	DEADWOOD	6,687	4	0	1	3	0.84	0.65	1.42	2.29	0.28	0.16	0.12	0.43	0.38
216	216	2	W CHICAGO ST EB	STURGIS	ACCESS	6,687	0	0	0	0	0.17	0.00	1.42	3.61	0.00	0.00	0.12	1.05	0.00
94	22	2	W CHICAGO ST WB	44TH	STURGIS	5,926	6	1	1	4	0.60	1.55	1.42	2.54	0.61	0.52	0.12	0.54	0.96
162	184	2	W CHICAGO ST WB	ACCESS	RAPID ST	6,687	1	0	0	1	0.10	1.30	1.42	4.31	0.30	0.00	0.12	1.42	0.00
166	96	2	W CHICAGO ST WB	ACCESS	DEADWOOD	6,687	4	0	1	3	0.80	0.68	1.42	2.31	0.29	0.17	0.12	0.44	0.39
215	215	2	W CHICAGO ST WB	STURGIS	ACCESS	6,687	0	0	0	0	0.10	0.00	1.42	4.42	0.00	0.00	0.12	1.48	0.00

*Rapid City Arterial Safety Study*

---

**APPENDIX B      HAINES AVENUE – LINDBERGH TO I-90**

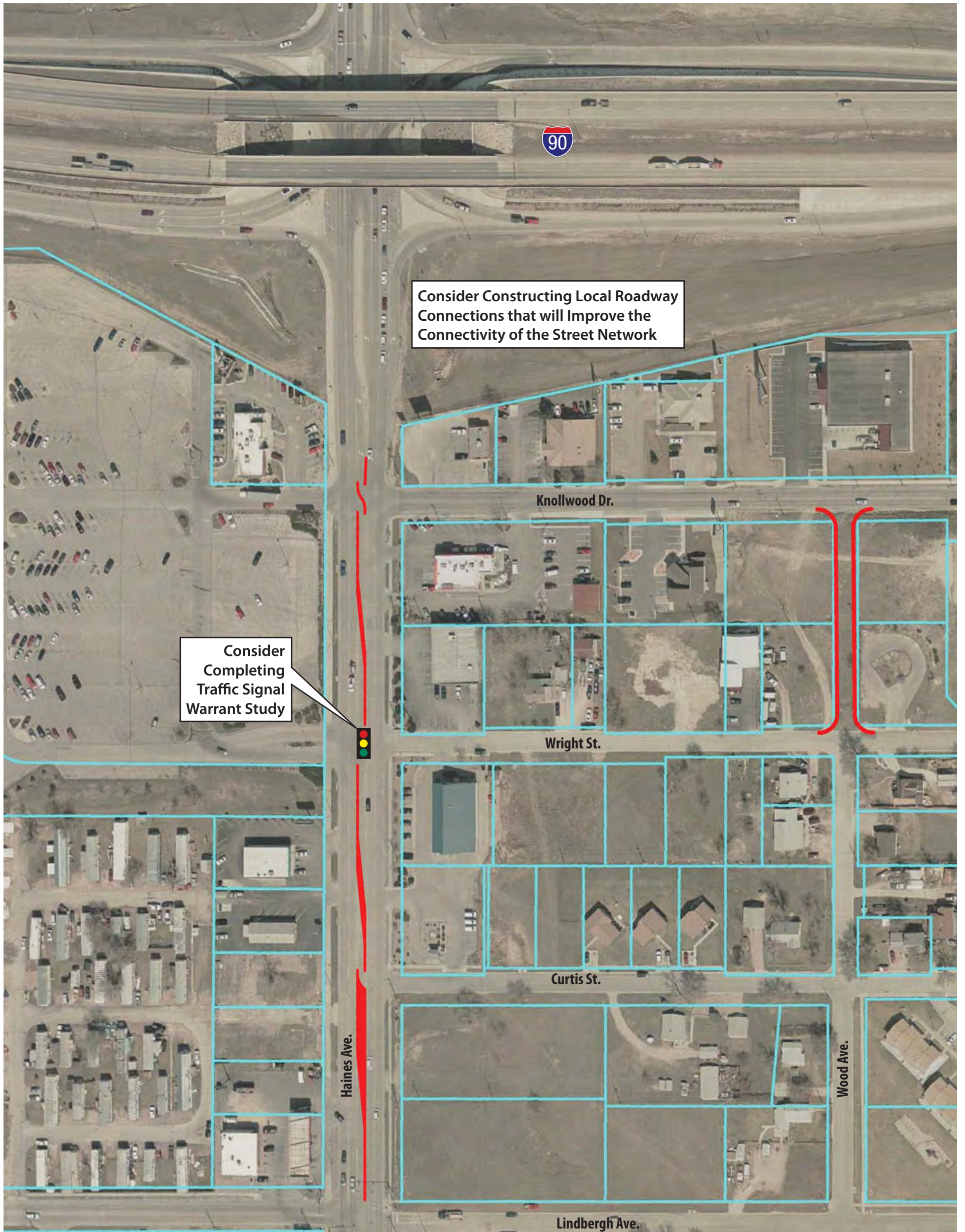


LEGEND		
Vehicle Movement	Fixed Objects	Severity
← Straight	□ Sign	■ Property Damage Only
⊥ Stopped	Ⓜ Signal	■ Injury
↯ Overturn	☁ Tree	■ Fatality
↱ Sideswipe	⊙ Pole	
▭ Parked	▣ Curb	
↶ Right Turn	⊗ Animal	
↷ Left Turn	⚡ Barrier/Rail	
↻ U-Turn	⦶ Fence	
× Pedestrian	● Rock/Boulder	
⊗ Bicycle		



**Segment 1**  
Haines Avenue -  
Lindbergh Avenue to I-90





*Rapid City Arterial Safety Study*

---

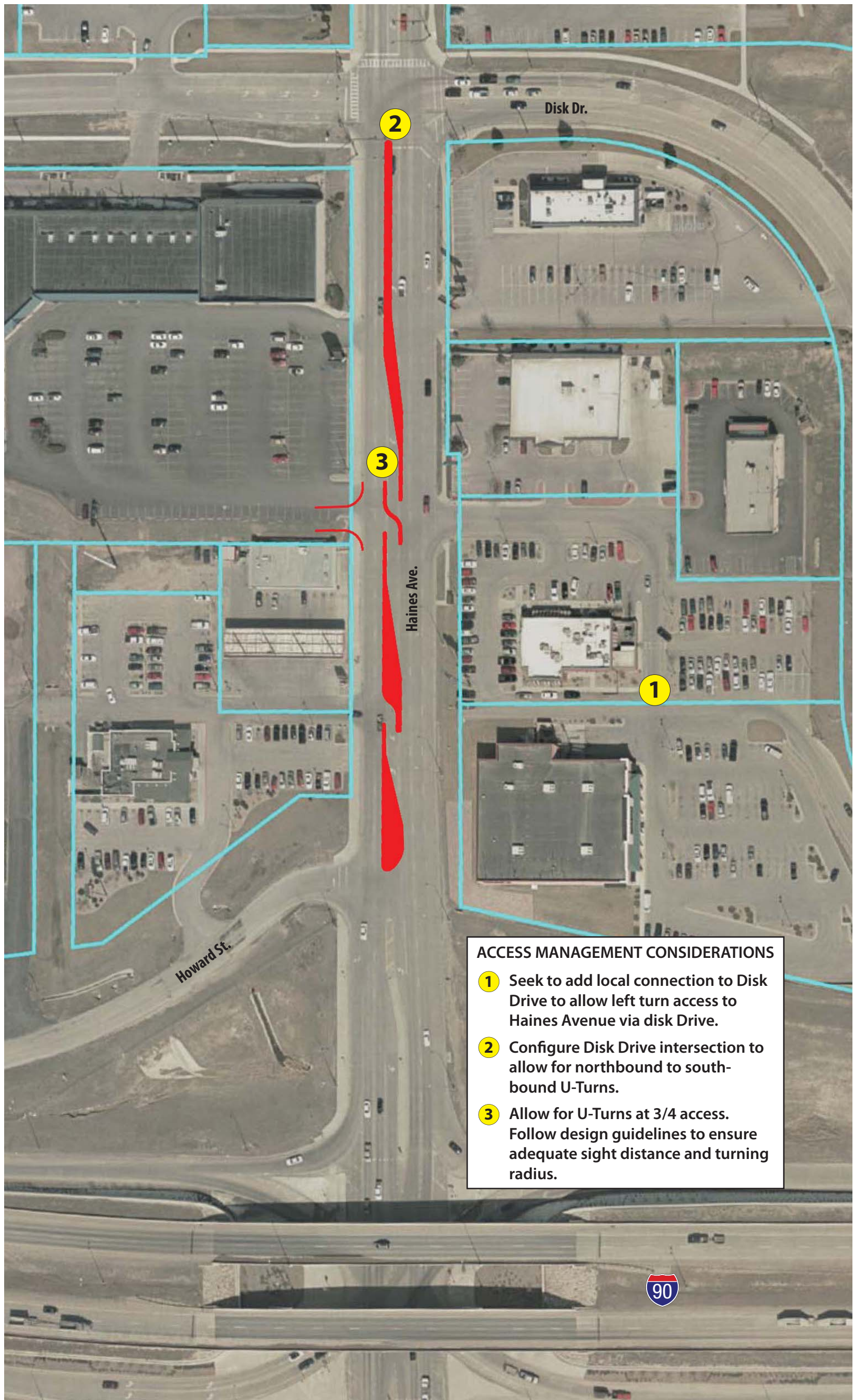
**APPENDIX C      HAINES AVENUE – I-90 TO DISK DRIVE**



LEGEND		
<b>Vehicle Movement</b>	<b>Fixed Objects</b>	<b>Severity</b>
← Straight	□ Sign	■ Property Damage Only
⊥ Stopped	Ⓜ Signal	■ Injury
↯ Overturn	☁ Tree	■ Fatality
↱ Sideswipe	⊙ Pole	
▭ Parked	▣ Curb	
↻ Right Turn	⚡ Animal	
↶ Left Turn	⚡ Barrier/Rail	
↺ U-Turn	⚡ Fence	
× Pedestrian	● Rock/Boulder	
⚡ Bicycle		



**Segment 2**  
Haines Avenue -  
I-90 to Disk Drive



**ACCESS MANAGEMENT CONSIDERATIONS**

- 1** Seek to add local connection to Disk Drive to allow left turn access to Haines Avenue via disk Drive.
- 2** Configure Disk Drive intersection to allow for northbound to southbound U-Turns.
- 3** Allow for U-Turns at 3/4 access. Follow design guidelines to ensure adequate sight distance and turning radius.

