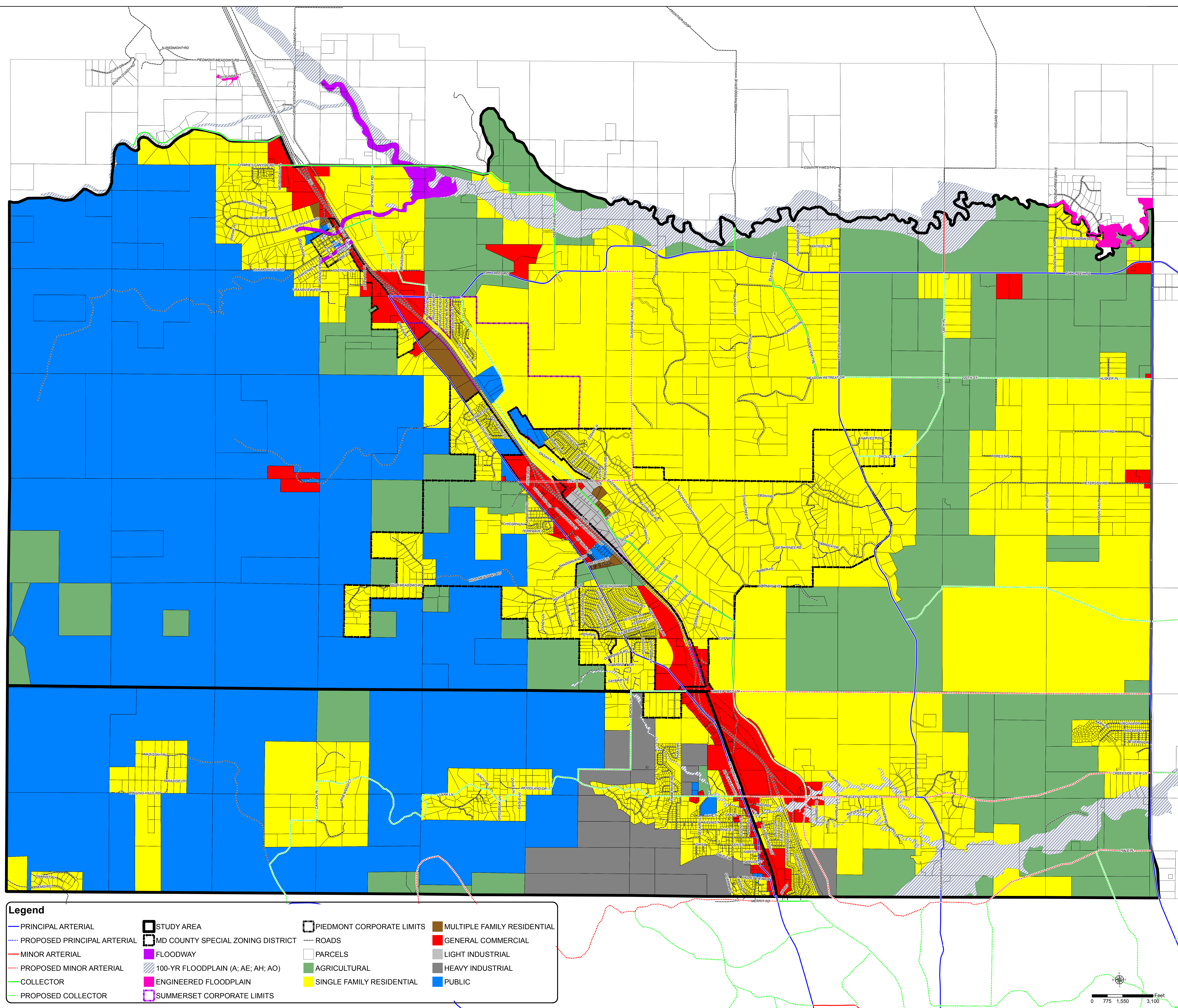
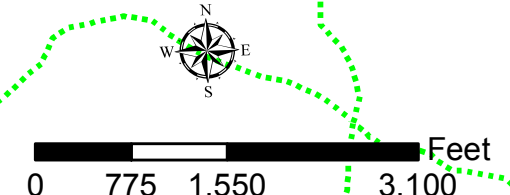


DATE: 12/16/2010 FILE: C:\Work\10-12\GIS\BarMap\3444\FutureLandUse\Working\Map\02010.mxd



**Legend**

— PRINCIPAL ARTERIAL	▣ STUDY AREA	▣ PIEDMONT CORPORATE LIMITS	■ MULTIPLE FAMILY RESIDENTIAL
⋯ PROPOSED PRINCIPAL ARTERIAL	▣ MD COUNTY SPECIAL ZONING DISTRICT	— ROADS	■ GENERAL COMMERCIAL
— MINOR ARTERIAL	■ FLOODWAY	▣ PARCELS	■ LIGHT INDUSTRIAL
⋯ PROPOSED MINOR ARTERIAL	▨ 100-YR FLOODPLAIN (A; AE; AH; AO)	■ AGRICULTURAL	■ HEAVY INDUSTRIAL
— COLLECTOR	■ ENGINEERED FLOODPLAIN	■ SINGLE FAMILY RESIDENTIAL	■ PUBLIC
⋯ PROPOSED COLLECTOR	▣ SUMMERSET CORPORATE LIMITS		



Prepared For:  
**Rapid City Area**  
 Metropolitan Planning Organization

Prepared By:  
**Ferber Engineering Company, Inc.**  
 City Engineering, Planning, Research & Transportation Land Surveying GIS  
 775 East Westmonte Dr., Rapid City, SD 57701 • Phone: (605) 343-3111

**DRAFT**

**PIEDMONT VALLEY AND BLACK HAWK AREA FUTURE LAND USE**  
 SOUTH DAKOTA

Sheet Title:  
**FUTURE LAND USE STUDY AREA**  
 Sheet:  
**1**