

APPENDIX A CITYWIDE ARTERIAL SEGMENT RANKINGS

DRAFT

Total Rank	Severe Rank	Segment Laneage	Road Segment Name	From	To	Avg ADT	Total Crashes	Fatal Crashes	Injury Crashes	PDO Crashes	Segment Length (mi)	Total Crash Rate	Reference Population Citywide Avg. Total Rate	Total Critical Crash Rate	Total CC Ratio	Severe Crash Rate	Reference Population Citywide Avg. Severe Rate	Severe Critical Crash Rate	Severe CC Ratio
46	52	2	44TH ST	RAIDER	MAIN	4,974	8	0	2	6	0.62	2.38	1.42	2.64	0.90	0.59	0.29	0.92	0.65
180	191	2	44TH ST	MAIN ST W	SOUTH CANYON RD	4,859	1	0	0	1	0.19	0.97	1.42	3.83	0.25	0.00	0.29	1.65	0.00
31	57	4	5TH ST	MINNESOTA	FAIRMONT	11,462	18	1	2	15	1.14	1.26	0.77	1.19	1.06	0.21	0.14	0.34	0.62
52	65	5	5TH ST	ST PATRICK	COLUMBUS	19,215	26	0	5	21	0.54	2.27	1.93	2.65	0.86	0.44	0.38	0.72	0.60
64	153	5	5TH ST	COLUMBUS	KANSAS CITY	20,062	5	0	0	5	0.07	3.14	1.93	4.05	0.77	0.00	0.38	1.50	0.00
72	130	5	5TH ST	FAIRMONT	MEADE	19,202	11	1	0	10	0.24	2.22	1.93	3.06	0.73	0.20	0.38	0.94	0.22
123	80	5	5TH ST	MEADE	ST PATRICK	19,202	6	0	2	4	0.20	1.42	1.93	3.16	0.45	0.47	0.38	0.99	0.48
146	177	5	5TH ST	MAIN	OMAHA	19,436	3	0	0	3	0.11	1.34	1.93	3.68	0.36	0.00	0.38	1.28	0.00
172	118	5	5TH ST	NEW YORK	NORTH	19,877	3	0	1	2	0.15	0.90	1.93	3.33	0.27	0.30	0.38	1.08	0.28
192	70	5	5TH ST	OMAHA	NEW YORK	19,665	2	0	2	0	0.16	0.60	1.93	3.33	0.18	0.60	0.38	1.08	0.55
221	221	5	5TH ST	ST JOSEPH	MAIN	19,436	0	0	0	0	0.05	0.00	1.93	4.50	0.00	0.00	0.38	1.76	0.00
223	223	5	5TH ST	KANSAS CITY	ST JOSEPH	20,062	0	0	0	0	0.03	0.00	1.93	5.68	0.00	0.00	0.38	2.50	0.00
247	247	5	5TH ST	CATRON	MINNESOTA	6,178	0	0	0	0	0.90	0.00	1.93	2.94	0.00	0.00	0.38	0.87	0.00
16	30	2	ANAMOSA ST	WEST BLVD N	HAINES	3,934	8	0	2	6	0.45	4.08	1.42	3.08	1.33	1.02	0.29	1.18	0.87
34	71	2	ANAMOSA ST	HAINES	LACROSSE	8,510	19	0	3	16	0.93	2.20	1.42	2.15	1.03	0.35	0.29	0.65	0.54
17	26	3	ANAMOSA ST	LACROSSE	WALMART ACCESS	9,845	8	0	2	6	0.19	4.01	1.40	3.03	1.32	1.00	0.25	1.08	0.93
83	90	5	CAMBELL ST	ST PATRICK	OMAHA	19,556	31	0	5	26	0.87	1.66	1.93	2.49	0.67	0.27	0.38	0.64	0.42
99	28	5	CAMBELL ST	MINNESOTA	FAIRMONT	14,608	11	0	5	6	0.42	1.63	1.93	2.88	0.56	0.74	0.38	0.84	0.88
206	206	5	CAMBELL ST	FAIRMONT	ST PATRICK	19,802	1	0	0	1	0.28	0.17	1.93	2.94	0.06	0.00	0.38	0.88	0.00
120	168	5	CAMBELL ST E	OMAHA	NORTH	21,799	11	0	0	11	0.36	1.29	1.93	2.77	0.46	0.00	0.38	0.79	0.00
240	240	2	CAMBELL ST NB	CATRON	MINNESOTA	5,983	0	0	0	0	0.43	0.00	1.42	2.77	0.00	0.00	0.12	0.64	0.00
234	234	2	CAMBELL ST SB	CATRON	MINNESOTA	5,983	0	0	0	0	0.43	0.00	1.42	2.77	0.00	0.00	0.29	1.00	0.00
30	128	2	CANYON LAKE DR	SHERIDAN LAKE	MOUNTAIN VIEW	11,906	14	0	1	13	0.43	2.52	1.42	2.34	1.08	0.18	0.29	0.76	0.24
71	132	2	CANYON LAKE DR	32ND	SHERIDAN LAKE	11,405	12	0	1	11	0.60	1.60	1.42	2.20	0.73	0.13	0.29	0.68	0.20
111	111	4	CANYON LAKE DR	HILLSVIEW	32ND	7,900	5	0	1	4	0.83	0.70	0.77	1.38	0.51	0.14	0.14	0.44	0.32
225	225	4	CANYON LAKE DR	HILLSVIEW	RED DALE	7,457	0	0	0	0	0.04	0.00	0.77	5.22	0.00	0.00	0.14	3.04	0.00
227	227	4	CANYON LAKE DR	JACKSON	RED DALE	7,457	0	0	0	0	0.19	0.00	0.77	2.23	0.00	0.00	0.14	0.94	0.00
75	81	5	CATHEDRAL DR	MT RUSHMORE	SENIOR HIGH RISE	14,110	4	0	1	3	0.08	3.12	1.93	4.34	0.72	0.78	0.38	1.66	0.47
97	48	3	CATHEDRAL DR	SENIOR HIGH RISE	5TH	15,092	2	0	1	1	0.05	2.37	1.40	4.11	0.58	1.19	0.25	1.74	0.68
191	129	4	CATRON BLVD	5TH	SD HWY 79	10,776	3	0	1	2	1.11	0.23	0.77	1.21	0.19	0.08	0.14	0.35	0.22
60	23	4	CATRON BLVD	US-16	5TH	11,085	23	0	7	16	2.18	0.87	0.77	1.07	0.81	0.26	0.14	0.28	0.95
104	143	2	CATRON BLVD	SHERIDAN LAKE	US-16	9,762	15	0	1	14	1.31	1.07	1.42	1.98	0.54	0.07	0.29	0.56	0.13
236	236	3	CATRON BLVD	FRONTAGE US 16	US-16	9,762	0	0	0	0	0.07	0.00	1.40	4.39	0.00	0.00	0.25	1.92	0.00
40	149	2	COUNTRY RD	ELK VALE	STUDY LIMIT	1,250	2	0	0	2	0.23	6.26	1.42	6.45	0.97	0.00	0.29	3.42	0.00
51	8	2	COUNTRY RD	HAINES	NIKE	1,317	8	0	4	4	2.46	2.25	1.42	2.60	0.87	1.13	0.29	0.90	1.25
87	16	2	COUNTRY RD	ELK VALE	DYESS	1,250	3	0	2	1	0.96	2.27	1.42	3.51	0.65	1.52	0.29	1.44	1.05
19	35	2	DEADWOOD AVE	I-90	STUDY LIMIT	2,362	14	0	3	11	1.73	3.13	1.42	2.46	1.27	0.67	0.29	0.82	0.82
21	31	4	DEADWOOD AVE	UNIVERSAL	I-90	14,293	3	0	1	2	0.05	3.83	0.77	3.04	1.26	1.28	0.14	1.47	0.87
39	148	3	DEADWOOD AVE	OMAHA	KREBS	17,145	8	0	0	8	0.16	2.66	1.40	2.69	0.99	0.00	0.25	0.89	0.00
59	151	3	DEADWOOD AVE	OMAHA	KREBS	17,145	3	0	0	3	0.05	3.22	1.40	3.95	0.81	0.00	0.25	1.64	0.00
85	156	4	DEADWOOD AVE	KREBS	CEMENT PLANT RD	17,145	3	0	0	3	0.12	1.28	0.77	1.93	0.66	0.00	0.14	0.76	0.00
164	137	5	DEADWOOD AVE	COMMERCE	CEMENT PLANT RD	17,145	7	0	1	6	0.45	0.83	1.93	2.77	0.30	0.12	0.38	0.79	0.15
169	53	5	DEADWOOD AVE	ACCESS	PLAZA	13,691	8	1	4	3	0.71	0.75	1.93	2.68	0.28	0.47	0.38	0.74	0.64
209	209	5	DEADWOOD AVE	PLAZA	UNIVERSAL	14,293	0	0	0	0	0.30	0.00	1.93	3.10	0.00	0.00	0.38	0.96	0.00
186	194	3	DEADWOOD AVE NB	OMAHA	KREBS	17,145	1	0	0	1	0.06	0.84	1.40	3.60	0.23	0.00	0.25	1.42	0.00
80	85	2	DYESS AVE	MALL	SEGER	3,001	4	0	1	3	0.55	2.22	1.42	3.16	0.70	0.56	0.29	1.23	0.45
149	49	2	DYESS AVE	N LIMIT	COUNTRY	2,878	3	0	2	1	1.03	0.93	1.42	2.66	0.35	0.62	0.29	0.94	0.66
182	105	2	DYESS AVE	COUNTRY	SEGER	2,878	2	0	1	1	0.97	0.66	1.42	2.71	0.24	0.33	0.29	0.96	0.34
5	6	5	E NORTH ST	SPRUCE	CAMBELL	17,340	30	0	6	24	0.26	6.16	1.93	3.07	2.01	1.23	0.38	0.94	1.31
32	147	5	E NORTH ST	LACROSSE	SPRUCE	17,340	7	0	0	7	0.09	4.22	1.93	4.01	1.05	0.00	0.38	1.47	0.00
101	161	2	E NORTH ST	EGLIN	I-90	6,707	2	0	0	2	0.12	2.26	1.42	4.07	0.56	0.00	0.29	1.80	0.00
116	42	5	E NORTH ST	MILWAUKEE	LACROSSE	16,044	6	0	3	3	0.22	1.57	1.93	3.23	0.49	0.78	0.38	1.03	0.76
171	186	3	E NORTH ST	EGLIN	I-90	6,707	1	0	0	1	0.12	1.11	1.40	4.00	0.28	0.00	0.25	1.67	0.00
178	189	2	E NORTH ST	CENTURY	ANAMOSA	8,854	1	0	0	1	0.11	0.98	1.42	3.85	0.25	0.00	0.29	1.66	0.00
245	245	4	E NORTH ST	E MALL	I 90	2,694	0	0	0	0	0.08	0.00	0.77	5.69	0.00	0.00	0.14	3.39	0.00
203	107	2	E NORTH ST NB	ANAMOSA	EGLIN	6,707	1	0	1	0	0.43	0.32	1.42	2.68	0.12	0.32	0.29	0.95	0.33
214	214	2	E NORTH ST NB	CAMBELL	ANAMOSA	8,854	0	0	0	0	0.20	0.00	1.42	3.10	0.00	0.00	0.29	1.19	0.00

DRAFT

Total Rank	Severe Rank	Segment Laneage	Road Segment Name	From	To	Avg ADT	Total Crashes	Fatal Crashes	Injury Crashes	PDO Crashes	Segment Length (mi)	Total Crash Rate	Reference Population Citywide Avg. Total Rate	Total Critical Crash Rate	Total CC Ratio	Severe Crash Rate	Reference Population Citywide Avg. Severe Rate	Severe Critical Crash Rate	Severe CC Ratio
212	212	3	E NORTH ST SB	ANAMOSA	EGLIN	6,707	0	0	0	0	0.42	0.00	1.40	2.67	0.00	0.00	0.25	0.88	0.00
213	213	2	E NORTH ST SB	CAMBELL	ANAMOSA	8,854	0	0	0	0	0.30	0.00	1.42	2.74	0.00	0.00	0.29	0.98	0.00
11	12	5	EAST BLVD	NEW YORK	MILWAUKEE	15,953	26	0	6	20	0.34	4.37	1.93	2.95	1.48	1.01	0.38	0.88	1.15
160	58	5	EAST BLVD	OMAHA	NEW YORK	15,953	3	0	2	1	0.16	1.09	1.93	3.49	0.31	0.72	0.38	1.17	0.62
220	220	4	EAST BLVD	MAIN	OMAHA	12,026	0	0	0	0	0.08	0.00	0.77	2.65	0.00	0.00	0.14	1.21	0.00
8	55	4	ELK VALE RD	CHEYENNE	BEALE	16,499	7	0	1	6	0.10	3.83	0.77	2.11	1.82	0.55	0.14	0.87	0.63
86	157	2	ELK VALE RD	MALL DR	COUNTRY RD	2,262	6	0	0	6	1.39	1.74	1.42	2.62	0.66	0.00	0.29	0.91	0.00
121	169	4	ELK VALE RD	SD HWY 44	CONCOURSE DR	12,926	3	0	0	3	0.29	0.73	0.77	1.60	0.45	0.00	0.14	0.56	0.00
179	190	4	ELK VALE RD	SD HWY 79	SD HWY 44	11,500	9	0	0	9	2.73	0.26	0.77	1.03	0.25	0.00	0.14	0.26	0.00
185	121	4	ELK VALE RD	HOMESTEAD ST	CONCOURSE DR	16,499	3	0	1	2	0.56	0.30	0.77	1.27	0.23	0.10	0.14	0.38	0.26
205	205	4	ELK VALE RD	ANAMOSA	EGLIN	16,499	2	0	0	2	0.98	0.11	0.77	1.14	0.10	0.00	0.14	0.31	0.00
211	211	4	ELK VALE RD	I-90	MALL DR	2,262	0	0	0	0	0.14	0.00	0.77	4.65	0.00	0.00	0.14	2.62	0.00
248	248	4	ELK VALE RD	E ANAMOSA ST	HOMESTEAD ST	16,499	0	0	0	0	0.30	0.00	0.77	1.49	0.00	0.00	0.14	0.50	0.00
170	54	2	ELK VALE RD	COUNTRY	N LIMIT	784	1	0	1	0	1.03	1.14	1.42	4.08	0.28	1.14	0.29	1.80	0.63
130	172	2	ELM AVE	LOCAL ACCESS	E TALLENT	3,641	1	0	0	1	0.11	2.39	1.42	5.64	0.42	0.00	0.29	2.85	0.00
135	175	2	ELM AVE	FAIRMONT	E MINNESOTA	2,282	2	0	0	2	0.58	1.38	1.42	3.40	0.41	0.00	0.29	1.37	0.00
175	61	2	ELM AVE	E TALLENT	ST FRANCIS ST	3,641	1	0	1	0	0.24	1.05	1.42	3.96	0.27	1.05	0.29	1.72	0.61
194	197	2	ELM AVE	LOCAL ACCESS	FAIRMONT	3,641	1	0	0	1	0.46	0.54	1.42	3.13	0.17	0.00	0.29	1.21	0.00
226	226	3	ELM AVE	ST FRANCIS ST	E ST PATRICK ST	3,641	0	0	0	0	0.04	0.00	1.40	9.55	0.00	0.00	0.25	5.55	0.00
233	233	2	ELM AVE	E MINNESOTA	FIELD VIEW	2,282	0	0	0	0	0.26	0.00	1.42	4.65	0.00	0.00	0.29	2.18	0.00
84	135	2	FAIRMONT BLVD	5TH	ELM	11,181	14	0	1	13	0.82	1.39	1.42	2.09	0.67	0.10	0.29	0.62	0.16
141	86	3	FAIRMONT BLVD E	ELM	CAMBELL	7,664	6	0	2	4	0.83	0.86	1.40	2.21	0.39	0.29	0.25	0.63	0.45
1	2	5	HAINES AVE	LINDBERGH	I-90	19,876	33	0	8	25	0.20	7.63	1.93	3.14	2.43	1.85	0.38	0.98	1.88
2	1	5	HAINES AVE	I-90	DISK	24,996	31	0	8	23	0.16	7.23	1.93	3.15	2.30	1.87	0.38	0.99	1.89
114	124	2	HAINES AVE	COUNTRY	COLBALT	4,246	6	1	0	5	1.10	1.17	1.42	2.38	0.49	0.19	0.29	0.78	0.25
139	125	5	HAINES AVE	VAN BUREN	ANAMOSA	20,766	5	0	1	4	0.17	1.27	1.93	3.21	0.40	0.25	0.38	1.02	0.25
183	192	5	HAINES AVE	ANAMOSA	LINDBERGH	19,876	3	0	0	3	0.18	0.78	1.93	3.23	0.24	0.00	0.38	1.03	0.00
187	127	5	HAINES AVE	NORTH	VAN BUREN	20,766	3	0	1	2	0.18	0.72	1.93	3.17	0.23	0.24	0.38	0.99	0.24
193	196	5	HAINES AVE	PAHASAPA	MALL	16,209	1	0	0	1	0.07	0.78	1.93	4.33	0.18	0.00	0.38	1.66	0.00
202	203	3	HAINES AVE	MALL	COUNTRY	11,781	3	0	0	3	0.97	0.24	1.40	1.99	0.12	0.00	0.25	0.52	0.00
208	208	5	HAINES AVE	DISK	PAHASAPA	16,209	0	0	0	0	0.03	0.00	1.93	5.88	0.00	0.00	0.38	2.63	0.00
63	79	2	HILLSVIEW DR	AUDUBON	RAIDER	3,172	4	0	1	3	0.45	2.57	1.42	3.31	0.78	0.64	0.29	1.32	0.49
127	171	2	HILLSVIEW DR	W ST PATRICK ST	CANYON LAKE DR	2,703	1	0	0	1	0.14	2.50	1.42	5.77	0.43	0.00	0.29	2.94	0.00
7	145	4	JACKSON BLVD	CITY LIMIT	CHAPEL	4,557	15	0	0	15	1.08	2.78	0.77	1.48	1.87	0.00	0.14	0.50	0.00
9	9	4	JACKSON BLVD	TROUT CT	ELK HART RD	4,557	12	0	3	9	0.92	2.60	0.77	1.55	1.68	0.65	0.14	0.53	1.22
77	131	5	JACKSON BLVD	W FULTON ST	MAIN	20,973	12	0	1	11	0.25	2.11	1.93	2.98	0.71	0.18	0.38	0.89	0.20
126	112	5	JACKSON BLVD	SHERIDAN LAKE	MTVIEW	23,895	16	0	3	13	0.54	1.14	1.93	2.57	0.44	0.21	0.38	0.69	0.31
144	76	4	JACKSON BLVD	CHAPEL	CANYON LAKE	9,216	2	0	1	1	0.29	0.68	0.77	1.78	0.38	0.34	0.14	0.67	0.51
157	142	5	JACKSON BLVD	PARK DR	32ND	13,181	9	0	1	8	0.74	0.85	1.93	2.68	0.32	0.09	0.38	0.74	0.13
159	134	5	JACKSON BLVD	32ND	SHERIDAN LAKE	15,585	6	0	1	5	0.39	0.91	1.93	2.89	0.31	0.15	0.38	0.85	0.18
181	103	5	JACKSON BLVD	CANYON LAKE	PARK DR	13,181	2	0	1	1	0.15	0.93	1.93	3.73	0.25	0.47	0.38	1.31	0.36
200	201	5	JACKSON BLVD	MOUNTAIN VIEW	W FULTON ST	20,973	1	0	0	1	0.08	0.56	1.93	3.93	0.14	0.00	0.38	1.42	0.00
125	170	2	LA CROSSE ST N	SEGER RD	MALL DR	2,851	1	0	0	1	0.12	2.60	1.42	5.88	0.44	0.00	0.29	3.02	0.00
12	32	5	LACROSSE ST N	MERIDIAN	EGLIN	21,171	9	0	2	7	0.07	5.87	1.93	4.10	1.43	1.30	0.38	1.52	0.86
14	43	6	LACROSSE ST N	ANAMOSA	MERIDIAN	21,171	18	0	2	16	0.06	12.99	5.49	9.13	1.42	1.44	0.55	1.95	0.74
15	20	5	LACROSSE ST N	E NORTH	ANAMOSA	24,835	53	0	10	43	0.55	3.54	1.93	2.55	1.39	0.67	0.38	0.68	0.99
18	33	2	LACROSSE ST N	OMAHA	E NORTH	11,374	14	0	3	11	0.35	3.21	1.42	2.47	1.30	0.69	0.29	0.83	0.83
55	68	5	LACROSSE ST N	EGLIN	I-90	21,171	9	0	2	7	0.14	2.86	1.93	3.38	0.85	0.64	0.38	1.11	0.57
177	188	5	LACROSSE ST N	I-90	DISK	13,856	1	0	0	1	0.05	1.40	1.93	5.33	0.26	0.00	0.38	2.28	0.00
210	210	5	LACROSSE ST N	DISK	MALL	4,114	0	0	0	0	0.04	0.00	1.93	9.92	0.00	0.00	0.38	5.42	0.00
3	51	2	LAMB RD / RESERVOIR	SD HWY 44 E	OLD FOLSOM RD	205	7	1	0	6	3.70	8.42	1.42	4.17	2.02	1.20	0.29	1.86	0.65
74	114	2	LONG VIEW RD	RESERVOIR RD	E LIMIT	1,177	7	0	1	6	2.95	1.84	1.42	2.56	0.72	0.26	0.29	0.88	0.30
196	198	2	LONG VIEW RD	SD HWY 44	RESERVOIR RD	4,428	1	0	0	1	0.44	0.47	1.42	3.00	0.16	0.00	0.29	1.13	0.00
22	21	3	MAIN ST	3RD ST	EAST BLVD	10,900	9	0	3	6	0.22	3.46	1.40	2.80	1.24	1.15	0.25	0.95	1.21
28	78	3	MAIN ST	5TH	3RD	10,900	6	0	1	5	0.14	3.48	1.40	3.17	1.10	0.58	0.25	1.17	0.50
76	29	3	MAIN ST	EAST BLVD	STEELE	8,551	8	0	3	5	0.50	1.72	1.40	2.41	0.71	0.64	0.25	0.74	0.87
106	60	2	MAIN ST E EB	STEELE	UNIVERSITY LOOP	11,093	2	0	1	1	0.08	2.12	1.42	3.97	0.53	1.06	0.29	1.73	0.61

DRAFT

Total Rank	Severe Rank	Segment Laneage	Road Segment Name	From	To	Avg ADT	Total Crashes	Fatal Crashes	Injury Crashes	PDO Crashes	Segment Length (mi)	Total Crash Rate	Reference Population Citywide Avg. Total Rate	Total Critical Crash Rate	Total CC Ratio	Severe Crash Rate	Reference Population Citywide Avg. Severe Rate	Severe Critical Crash Rate	Severe CC Ratio
108	62	2	MAIN ST E WB	STEELE	UNIVERSITY LOOP	11,093	2	0	1	1	0.08	2.10	1.42	3.95	0.53	1.05	0.29	1.72	0.61
10	5	5	MAIN ST W	SHERIDAN LAKE	MOUNTAIN VIEW	22,768	49	0	11	38	0.45	4.41	1.93	2.66	1.66	0.99	0.38	0.73	1.36
53	141	5	MAIN ST W	STURGIS	SHERIDAN LAKE	18,572	23	0	1	22	0.49	2.30	1.93	2.70	0.85	0.10	0.38	0.75	0.13
90	44	4	MAIN ST W	SOO SAN	STURGIS	11,458	2	0	1	1	0.10	1.54	0.77	2.42	0.64	0.77	0.14	1.07	0.72
109	163	2	MAIN ST W	NORDBY	SOO SAN	5,196	3	0	0	3	0.32	1.62	1.42	3.13	0.52	0.00	0.29	1.21	0.00
117	64	3	MAIN ST W	JACKSON	WEST ST	37,590	12	1	3	8	0.31	0.94	1.40	1.98	0.48	0.31	0.25	0.52	0.60
165	123	3	MAIN ST W	WEST BLVD	WEST ST	18,143	4	0	1	3	0.30	0.67	1.40	2.28	0.30	0.17	0.25	0.67	0.25
218	218	2	MAIN ST W	44TH	NORDBY	5,196	0	0	0	0	0.29	0.00	1.42	3.24	0.00	0.00	0.29	1.28	0.00
58	122	5	MAIN ST W	JACKSON	MOUNTAIN VIEW	30,000	10	0	1	9	0.12	2.64	1.93	3.24	0.82	0.26	0.38	1.03	0.26
173	187	3	MAIN ST W EB	WB MAIN ST MERGE	WEST BLVD	37,590	7	0	0	7	0.32	0.53	1.40	1.97	0.27	0.00	0.25	0.51	0.00
197	91	2	MALL DR	HAINES	MAPLE	3,533	1	0	1	0	0.55	0.47	1.42	2.99	0.16	0.47	0.29	1.13	0.41
243	243	2	MALL DR	MAPLE	LACROSSE	2,888	0	0	0	0	0.35	0.00	1.42	3.75	0.00	0.00	0.29	1.60	0.00
161	183	3	MALL DR E	DYESS	ELK VALE	1,965	2	0	0	2	1.02	0.91	1.40	2.94	0.31	0.00	0.25	1.03	0.00
244	244	4	MALL DR E	NORTH	DYESS	4,188	0	0	0	0	0.36	0.00	0.77	2.20	0.00	0.00	0.14	0.92	0.00
246	246	4	MALL DR E	LACROSSE	NORTH	1,692	0	0	0	0	1.17	0.00	0.77	1.98	0.00	0.00	0.14	0.79	0.00
119	167	3	MINNESOTA ST E	5TH	LOCAL ACCESS	4,487	2	0	0	2	0.24	1.67	1.40	3.60	0.46	0.00	0.25	1.42	0.00
129	72	2	MINNESOTA ST E	PARKVIEW DR	ELM	4,487	2	0	1	1	0.27	1.50	1.42	3.49	0.43	0.75	0.29	1.43	0.52
152	179	3	MINNESOTA ST E	ELM	CAMBELL	4,861	3	0	0	3	0.66	0.86	1.40	2.58	0.33	0.00	0.25	0.83	0.00
241	241	3	MINNESOTA ST E	ELM	LOCAL ACCESS	4,487	0	0	0	0	0.11	0.00	1.40	4.93	0.00	0.00	0.25	2.27	0.00
45	108	2	MOON MEADOWS RD	US HWY 16	DUNSMORE	1,333	8	0	1	7	2.22	2.47	1.42	2.66	0.93	0.31	0.29	0.94	0.33
29	99	5	MOUNTAINVIEW RD	MAIN	OMAHA	18,757	8	0	1	7	0.09	4.13	1.93	3.83	1.08	0.52	0.38	1.37	0.38
50	150	5	MOUNTAINVIEW RD	CANYON LAKE	MAIN	17,094	6	0	0	6	0.09	3.44	1.93	3.95	0.87	0.00	0.38	1.43	0.00
163	93	5	MOUNTAINVIEW RD	JACKSON	CANYON LAKE	9,580	2	0	1	1	0.16	1.21	1.93	4.01	0.30	0.60	0.38	1.47	0.41
13	13	5	MT RUSHMORE RD	CLEVELAND	ST PATRICK	24,337	43	0	9	34	0.43	3.78	1.93	2.65	1.42	0.79	0.38	0.72	1.09
24	36	5	MT RUSHMORE RD	ST PATRICK	FRANKLIN	23,928	13	0	3	10	0.13	3.79	1.93	3.31	1.15	0.88	0.38	1.07	0.82
27	40	5	MT RUSHMORE RD	COLUMBUS	FRANKLIN	23,928	31	0	6	25	0.40	2.97	1.93	2.69	1.11	0.57	0.38	0.74	0.77
56	39	5	MT RUSHMORE RD	MAIN	OMAHA	16,197	6	0	2	4	0.10	3.29	1.93	3.90	0.85	1.10	0.38	1.41	0.78
70	113	6	MT RUSHMORE RD	KANSAS CITY	COLUMBUS	23,928	12	0	1	11	0.07	6.19	5.49	8.52	0.73	0.52	0.55	1.68	0.31
78	69	2	MT RUSHMORE RD	CATHEDRAL	CLEVELAND	12,169	3	0	1	2	0.09	2.60	1.42	3.68	0.71	0.87	0.29	1.55	0.56
219	219	6	MT RUSHMORE RD	ST JOSEPH	MAIN	20,380	0	0	0	0	0.06	0.00	5.49	9.36	0.00	0.00	0.55	2.05	0.00
222	222	6	MT RUSHMORE RD	ST JOSEPH	KANSAS CITY	23,928	0	0	0	0	0.03	0.00	5.49	10.72	0.00	0.00	0.55	2.68	0.00
232	232	2	MT RUSHMORE RD NB	CATHEDRAL	CLEVELAND	12,169	0	0	0	0	0.09	0.00	1.42	3.67	0.00	0.00	0.12	1.08	0.00
66	41	2	NECK YOKE RD	SPRING CREEK	STUDY LIMIT	2,361	9	0	3	6	1.91	1.83	1.42	2.40	0.76	0.61	0.29	0.79	0.77
95	50	2	NECK YOKE RD	US HWY 16 E	SPRING CREEK	2,361	2	0	1	1	0.31	2.47	1.42	4.22	0.59	1.24	0.29	1.89	0.65
118	104	2	NEMO RD	W LIMIT	SCHROEDER	2,741	9	0	2	7	2.97	1.01	1.42	2.13	0.47	0.22	0.29	0.64	0.35
132	98	2	OLD FOLSOM RD	SD HWY 79	LAMB	858	3	0	1	2	2.67	1.20	1.42	2.86	0.42	0.40	0.29	1.05	0.38
238	238	2	OLD FOLSOM RD	LAMB	S LIMIT	858	0	0	0	0	2.61	0.00	1.42	2.88	0.00	0.00	0.29	1.06	0.00
217	217	2	OMAHA RAMP	DEADWOOD	LANE MERGE	24,606	0	0	0	0	0.07	0.00	1.42	3.11	0.00	0.00	0.29	1.20	0.00
57	24	5	OMAHA ST	6TH 1/2	5TH	14,668	4	0	2	2	0.07	3.82	1.93	4.64	0.82	1.91	0.46	2.03	0.94
103	109	3	OMAHA ST	EAST BLVD	3RD	25,719	8	0	2	6	0.22	1.30	1.48	2.37	0.55	0.33	0.46	0.99	0.33
138	97	3	OMAHA ST	5TH	3RD	12,859	2	0	1	1	0.11	1.31	1.40	3.30	0.40	0.65	0.46	1.69	0.39
151	178	3	OMAHA ST	WEST BLVD	MT RUSHMORE	14,734	2	0	0	2	0.12	1.02	1.40	3.04	0.33	0.00	0.46	1.51	0.00
188	195	5	OMAHA ST	MAPLE	LACROSSE	22,433	6	0	0	6	0.42	0.58	1.93	2.69	0.22	0.00	0.38	0.74	0.00
195	106	3	OMAHA ST	WEST BLVD	MT RUSHMORE	14,734	1	0	1	0	0.12	0.51	1.40	3.04	0.17	0.51	0.46	1.51	0.34
201	202	5	OMAHA ST	EAST BLVD	MAPLE AVE	22,433	1	0	0	1	0.08	0.49	1.93	3.78	0.13	0.00	0.38	1.34	0.00
37	119	4	OMAHA ST E	LACROSSE	CAMBELL	19,970	12	1	0	11	0.43	1.29	0.77	1.30	0.99	0.11	0.14	0.40	0.27
189	83	5	OMAHA ST EB	MT RUSHMORE	6TH 1/2	14,668	1	0	1	0	0.07	0.93	1.93	4.60	0.20	0.93	0.46	2.00	0.46
249	249	3	OMAHA ST EB	5TH	3RD	12,859	0	0	0	0	0.11	0.00	1.40	3.29	0.00	0.00	0.46	1.68	0.00
26	14	5	OMAHA ST W	MOUNTAIN VIEW	WEST BLVD	15,407	40	0	12	28	0.83	2.85	1.93	2.58	1.11	0.85	0.46	0.79	1.08
88	126	2	OMAHA ST W	DEADWOOD	MOUNTAIN VIEW	24,606	8	0	1	7	0.19	1.53	1.42	2.37	0.64	0.19	0.29	0.77	0.25
131	173	3	OMAHA ST W	MOUNTAIN VIEW	MERGE WITH OMAHA ST EB	15,407	4	0	0	4	0.22	1.07	1.40	2.54	0.42	0.00	0.25	0.81	0.00
92	25	5	OMAHA ST WB	6TH 1/2	5TH	14,668	3	0	2	1	0.07	2.87	1.93	4.64	0.62	1.91	0.46	2.03	0.94
93	159	3	OMAHA ST WB	3RD	EAST BLVD	12,859	5	0	0	5	0.22	1.63	1.40	2.67	0.61	0.00	0.46	1.26	0.00
136	82	5	OMAHA ST WB	MT RUSHMORE	6TH 1/2	14,668	2	0	1	1	0.07	1.86	1.93	4.60	0.40	0.93	0.46	2.00	0.47
79	154	2	RED DALE DR	CANYON LAKE	AUDUBON	2,703	2	0	0	2	0.20	3.40	1.42	4.83	0.70	0.00	0.29	2.30	0.00
62	19	2	RESERVOIR RD	TWILIGHT	LONG VIEW	1,408	4	0	2	2	0.96	2.70	1.42	3.37	0.80	1.35	0.29	1.36	1.00
142	38	2	RESERVOIR RD	LONG VIEW	SD HWY 44	1,408	1	0	1	0	0.33	1.97	1.42	5.16	0.38	1.97	0.29	2.52	0.78

DRAFT

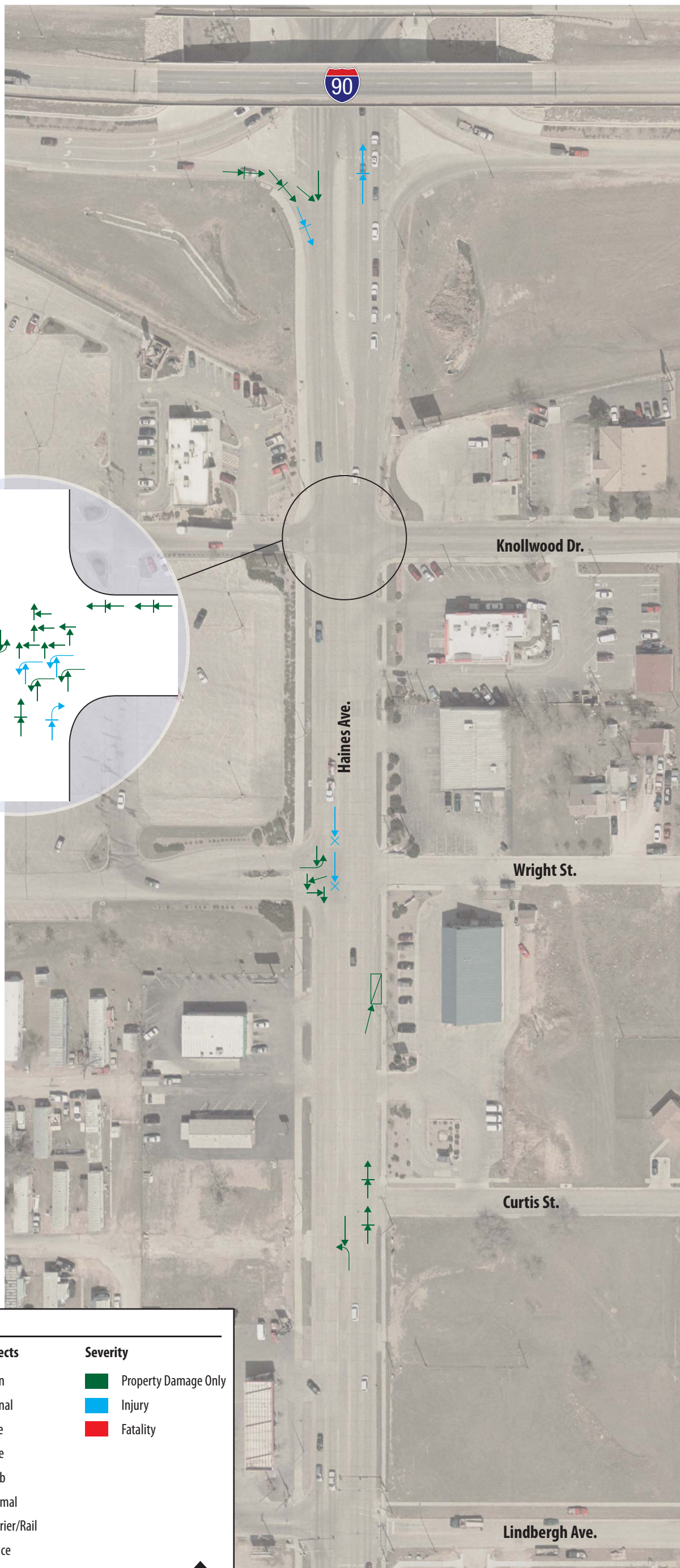
Total Rank	Severe Rank	Segment Laneage	Road Segment Name	From	To	Avg ADT	Total Crashes	Fatal Crashes	Injury Crashes	PDO Crashes	Segment Length (mi)	Total Crash Rate	Reference Population Citywide Avg. Total Rate	Total Critical Crash Rate	Total CC Ratio	Severe Crash Rate	Reference Population Citywide Avg. Severe Rate	Severe Critical Crash Rate	Severe CC Ratio
224	224	2	RESERVOIR RD	S PITCH	TWILIGHT	1,408	0	0	0	0	0.43	0.00	1.42	4.58	0.00	0.00	0.29	2.13	0.00
134	144	5	SD HWY 44 E	E ST PATRICK	MICKELSON	23,224	22	0	1	21	0.87	1.00	1.93	2.44	0.41	0.05	0.38	0.62	0.07
150	67	5	SD HWY 44 E	MICKELSON	CREEK	22,061	6	0	3	3	0.24	1.02	1.93	2.96	0.34	0.51	0.38	0.88	0.58
190	88	5	SD HWY 44 E	CAMBELL	CREEK	20,897	3	0	2	1	0.22	0.60	1.93	3.05	0.20	0.40	0.38	0.93	0.43
42	75	4	SD HWY 44 E	TWILIGHT	PIONEER	16,065	5	0	1	4	0.16	1.72	0.77	1.79	0.96	0.34	0.14	0.67	0.51
96	74	5	SD HWY 44 E	ST PATRICK	SCHOOL DR	23,360	7	0	2	5	0.15	1.89	1.93	3.25	0.58	0.54	0.38	1.04	0.52
128	140	5	SD HWY 44 E	RESERVOIR	AIRPORT	6,510	25	0	2	23	3.38	1.04	1.93	2.42	0.43	0.08	0.38	0.61	0.14
143	18	4	SD HWY 44 E	ACCESS	PIONEER	16,065	2	0	2	0	0.17	0.68	0.77	1.78	0.38	0.68	0.14	0.67	1.02
154	115	2	SD HWY 44 E	STUDY LIMIT	AIRPORT	6,510	12	0	3	9	2.77	0.61	1.42	1.89	0.32	0.15	0.29	0.51	0.30
167	185	5	SD HWY 44 E	JOLLY	LONG VIEW	15,389	8	0	0	8	0.61	0.78	1.93	2.69	0.29	0.00	0.38	0.74	0.00
184	193	4	SD HWY 44 E	PIONEER	JOLLY	16,065	1	0	0	1	0.12	0.49	0.77	2.02	0.24	0.00	0.14	0.81	0.00
198	199	5	SD HWY 44 E	LONG VIEW	RESERVOIR	15,389	4	0	0	4	0.56	0.42	1.93	2.73	0.16	0.00	0.38	0.76	0.00
199	200	5	SD HWY 44 E	TWILIGHT DR	SCHOOL DR	23,360	2	0	0	2	0.16	0.48	1.93	3.17	0.15	0.00	0.38	0.99	0.00
68	15	2	SD HWY 44 W	CAVERN RD	WESTERN LIMIT	4,557	14	1	5	8	1.74	1.61	1.42	2.14	0.75	0.69	0.29	0.65	1.07
81	116	2	SD HWY 44 W	BLAKE	LOCAL ACCESS	4,557	7	1	0	6	0.79	1.78	1.42	2.54	0.70	0.25	0.29	0.86	0.29
105	56	2	SD HWY 44 W	LOCAL ACCESS	CAVERN RD	4,556	5	1	1	3	0.72	1.40	1.42	2.60	0.54	0.56	0.29	0.90	0.62
176	136	2	SD HWY 79	OLD FOLSOM RD	S LIMIT	5,206	12	0	1	11	4.38	0.48	1.42	1.83	0.26	0.04	0.12	0.25	0.16
235	235	2	SD HWY 79 NB	OLD FOLSOM RD	ELK VALE	5,064	0	0	0	0	0.52	0.00	1.42	2.75	0.00	0.00	0.12	0.63	0.00
207	207	2	SD HWY 79 SB	OLD FOLSOM RD	S LIMIT	5,206	1	0	0	1	4.41	0.04	1.42	1.83	0.02	0.00	0.12	0.25	0.00
242	242	2	SD HWY 79 SB	CATRON	OLD FOLSOM RD	5,064	0	0	0	0	0.53	0.00	1.42	2.74	0.00	0.00	0.12	0.62	0.00
122	120	2	SEGER DR	LACROSSE	DYESS	2,851	5	0	1	4	1.45	1.11	1.42	2.45	0.45	0.22	0.29	0.82	0.27
23	87	2	SHERIDAN LAKE RD	CANYON LAKE	MAIN	9,839	7	0	1	6	0.18	3.56	1.42	3.07	1.16	0.51	0.29	1.18	0.43
25	47	2	SHERIDAN LAKE RD	JUDY AVE	CANYON LAKE	10,094	9	0	2	7	0.27	3.05	1.42	2.73	1.12	0.68	0.29	0.97	0.69
38	59	4	SHERIDAN LAKE RD	DORAL	FLORMANN	13,590	17	0	3	14	0.97	1.17	0.77	1.18	0.99	0.21	0.14	0.34	0.62
48	89	4	SHERIDAN LAKE RD	DORAL	FAIRWAY HILLS	13,590	6	0	1	5	0.28	1.43	0.77	1.59	0.90	0.24	0.14	0.56	0.43
54	46	2	SHERIDAN LAKE RD	DUNSMORE	WILDWOOD	7,060	21	0	5	16	1.59	1.71	1.42	2.02	0.85	0.41	0.29	0.58	0.70
89	110	2	SHERIDAN LAKE RD	DUNSMORE	STUDY LIMIT	7,060	39	0	5	34	4.45	1.13	1.42	1.77	0.64	0.15	0.29	0.46	0.32
100	160	4	SHERIDAN LAKE RD	SPRINGBROOK	HEIDIWAY	13,590	2	0	0	2	0.11	1.25	0.77	2.22	0.56	0.00	0.14	0.94	0.00
102	162	2	SHERIDAN LAKE RD	JACKSON	JUDY	10,094	4	0	0	4	0.23	1.58	1.42	2.85	0.55	0.00	0.29	1.04	0.00
137	101	2	SHERIDAN LAKE RD	CATRON	WILDWOOD	7,060	3	0	1	2	0.35	1.11	1.42	2.80	0.40	0.37	0.29	1.01	0.36
147	102	4	SHERIDAN LAKE RD	FLORMANN	JACKSON	14,605	3	0	1	2	0.35	0.53	0.77	1.47	0.36	0.18	0.14	0.49	0.36
158	182	3	SHERIDAN LAKE RD	CATRON	CORRAL	13,121	5	0	0	5	0.50	0.69	1.40	2.19	0.32	0.00	0.25	0.62	0.00
174	95	4	SHERIDAN LAKE RD	HEIDIWAY	FAIRWAY HILLS	13,590	2	0	1	1	0.33	0.41	0.77	1.52	0.27	0.20	0.14	0.52	0.39
228	228	4	SHERIDAN LAKE RD	CORRAL	SPRINGBROOK	13,590	0	0	0	0	0.13	0.00	0.77	2.06	0.00	0.00	0.14	0.84	0.00
107	73	2	SOUTH CANYON RD	SCHROEDER	44TH	6,042	23	0	6	17	3.53	0.98	1.42	1.85	0.53	0.26	0.29	0.49	0.52
155	92	2	SPRING CREEK RD	NECK YOKE	S LIMIT	1,469	5	0	2	3	4.34	0.72	1.42	2.23	0.32	0.29	0.29	0.70	0.41
4	3	3	ST JOSEPH ST	5TH	EAST BLVD	10,462	24	0	5	19	0.44	4.78	1.40	2.37	2.02	0.99	0.25	0.72	1.39
47	27	3	ST JOSEPH ST	EAST BLVD	STEELE	8,687	10	0	3	7	0.48	2.18	1.40	2.42	0.90	0.65	0.25	0.74	0.88
6	34	5	ST JOSEPH ST E	ST PATRICK	ST JOSEPH	5,812	13	0	2	11	0.26	7.84	1.93	4.01	1.96	1.21	0.38	1.47	0.82
33	77	5	ST JOSEPH ST E	ST PATRICK	ST JOSEPH	5,812	13	0	2	11	0.61	3.33	1.93	3.22	1.04	0.51	0.38	1.02	0.50
67	133	2	ST JOSEPH ST E	UNIVERSITY LOOP	ST PATRICK	11,093	13	0	1	12	0.65	1.64	1.42	2.18	0.75	0.13	0.29	0.67	0.19
98	37	5	ST JOSEPH ST E	ST PATRICK	BRIDGE VIEW	5,812	4	0	2	2	0.28	2.24	1.93	3.92	0.57	1.12	0.38	1.42	0.79
229	229	1	ST JOSEPH ST E	BRIDGE VIEW	CAMBELL	5,812	0	0	0	0	0.07	0.00	0.00	0.00	0.00	0.00	0.29	2.79	0.00
230	230	1	ST JOSEPH ST E	ST PATRICK	CAMBELL	5,812	2	0	0	2	0.15	2.03	0.00	0.00	0.00	0.00	0.29	1.69	0.00
231	231	1	ST JOSEPH ST WB	BRIDGE VIEW	CAMBELL	5,812	0	0	0	0	0.09	0.00	0.00	0.00	0.00	0.00	0.29	2.37	0.00
69	4	2	ST PATRICK ST	MT RUSHMORE	5TH	13,193	6	0	4	2	0.21	2.01	1.42	2.72	0.74	1.34	0.29	0.97	1.38
73	66	4	ST PATRICK ST	5TH	PRAIRIE AVE	11,504	3	0	1	2	0.16	1.45	0.77	2.02	0.72	0.48	0.14	0.81	0.60
145	176	4	ST PATRICK ST	PRAIRIE	ELM	11,504	3	0	0	3	0.44	0.54	0.77	1.47	0.36	0.00	0.14	0.49	0.00
35	17	5	ST PATRICK ST E	ELM	ST JOSEPH	12,362	28	0	8	20	0.76	2.71	1.93	2.69	1.01	0.77	0.38	0.74	1.04
61	152	5	ST PATRICK ST E	S VALLEY	SD HWY 44	11,040	6	0	0	6	0.16	3.11	1.93	3.83	0.81	0.00	0.38	1.37	0.00
65	117	5	ST PATRICK ST E	CAMBELL	CREEK	15,322	8	0	1	7	0.18	2.64	1.93	3.41	0.77	0.33	0.38	1.13	0.29
91	158	5	ST PATRICK ST E	ST JOSEPH	CAMBELL	14,625	4	0	0	4	0.10	2.51	1.93	4.05	0.62	0.00	0.38	1.50	0.00
124	84	5	ST PATRICK ST E	CREEK	VALLEY	11,040	10	0	3	7	0.67	1.24	1.93	2.80	0.44	0.37	0.38	0.80	0.46
239	239	2	ST PATRICK ST W	RED DALE	HILLSVIEW	2,703	0	0	0	0	0.04	0.00	1.42	11.59	0.00	0.00	0.29	7.29	0.00
44	138	2	STURGIS RD	LOCAL ACCESS	UNIVERSAL	9,320	22	0	1	21	1.10	1.97	1.42	2.05	0.96	0.09	0.29	0.60	0.15
133	174	5	STURGIS RD	MAIN	CHICAGO	12,534	5	0	0	5	0.27	1.34	1.93	3.25	0.41	0.00	0.38	1.04	0.00
148	139	2	STURGIS RD	CHICAGO	UNIVERSAL	9,372	19	0	2	17	2.89	0.64	1.42	1.80	0.36	0.07	0.29	0.47	0.14

DRAFT

Total Rank	Severe Rank	Segment Laneage	Road Segment Name	From	To	Avg ADT	Total Crashes	Fatal Crashes	Injury Crashes	PDO Crashes	Segment Length (mi)	Total Crash Rate	Reference Population Citywide Avg. Total Rate	Total Critical Crash Rate	Total CC Ratio	Severe Crash Rate	Reference Population Citywide Avg. Severe Rate	Severe Critical Crash Rate	Severe CC Ratio
20	146	3	TWILIGHT DR	CONCOURSE	RESERVOIR	3,869	15	0	0	15	1.17	3.02	1.40	2.37	1.27	0.00	0.25	0.72	0.00
82	155	3	TWILIGHT DR	SD HWY 44	COUNCOURSE	7,535	5	0	0	5	0.31	1.97	1.40	2.82	0.70	0.00	0.25	0.96	0.00
36	45	2	UNIVERSAL DR	STURGIS	DEADWOOD	4,869	19	0	4	15	1.66	2.15	1.42	2.14	1.01	0.45	0.29	0.64	0.70
49	7	2	US HWY 16 NB	NECK YOKE	BUSTED 5 CT	6,199	41	0	8	33	3.68	1.64	1.42	1.83	0.90	0.32	0.12	0.25	1.26
43	11	2	US HWY 16 NB	NECK YOKE	MOON MEADOWS	6,199	19	0	4	15	1.37	2.04	1.42	2.12	0.96	0.43	0.12	0.36	1.19
115	166	2	US HWY 16 NB	MOON MEADOW	CATRON	6,199	7	0	0	7	0.92	1.12	1.42	2.28	0.49	0.00	0.12	0.43	0.00
140	63	2	US HWY 16 NB	PROMISE	CATHEDRAL	6,318	13	1	2	10	2.49	0.75	1.42	1.92	0.39	0.17	0.12	0.29	0.61
204	204	2	US HWY 16 NB	CATRON	PROMISE	6,318	1	0	0	1	0.50	0.29	1.42	2.62	0.11	0.00	0.12	0.57	0.00
113	165	2	US HWY 16 SB	NECK YOKE	BUSTED 5 CT	6,199	23	0	0	23	3.71	0.91	1.42	1.83	0.50	0.00	0.12	0.25	0.00
41	10	2	US HWY 16 SB	NECK YOKE	MOON MEADOWS	6,199	19	0	4	15	1.37	2.05	1.42	2.12	0.97	0.43	0.12	0.36	1.20
110	94	2	US HWY 16 SB	PROMISE	CATHEDRAL	6,318	17	0	2	15	2.49	0.99	1.42	1.92	0.51	0.12	0.12	0.29	0.41
153	180	2	US HWY 16 SB	CATRON	PROMISE	6,318	3	0	0	3	0.50	0.87	1.42	2.62	0.33	0.00	0.12	0.57	0.00
156	181	2	US HWY 16 SB	MOON MEADOW	FRONTAGE	6,199	2	0	0	2	0.31	0.96	1.42	3.02	0.32	0.00	0.12	0.76	0.00
237	237	2	US HWY 16 SB	FRONTAGE US 16	CATRON	6,199	0	0	0	0	0.58	0.00	1.42	2.54	0.00	0.00	0.12	0.54	0.00
112	164	2	W CHICAGO ST	44TH	STURGIS	5,926	5	0	0	5	0.60	1.29	1.42	2.54	0.51	0.00	0.12	0.54	0.00
168	100	2	W CHICAGO ST EB	ACCESS	DEADWOOD	6,687	4	0	1	3	0.84	0.65	1.42	2.29	0.28	0.16	0.12	0.43	0.38
216	216	2	W CHICAGO ST EB	STURGIS	ACCESS	6,687	0	0	0	0	0.17	0.00	1.42	3.61	0.00	0.00	0.12	1.05	0.00
94	22	2	W CHICAGO ST WB	44TH	STURGIS	5,926	6	1	1	4	0.60	1.55	1.42	2.54	0.61	0.52	0.12	0.54	0.96
162	184	2	W CHICAGO ST WB	ACCESS	RAPID ST	6,687	1	0	0	1	0.10	1.30	1.42	4.31	0.30	0.00	0.12	1.42	0.00
166	96	2	W CHICAGO ST WB	ACCESS	DEADWOOD	6,687	4	0	1	3	0.80	0.68	1.42	2.31	0.29	0.17	0.12	0.44	0.39
215	215	2	W CHICAGO ST WB	STURGIS	ACCESS	6,687	0	0	0	0	0.10	0.00	1.42	4.42	0.00	0.00	0.12	1.48	0.00

APPENDIX B HAINES AVENUE – LINDBERGH TO I-90

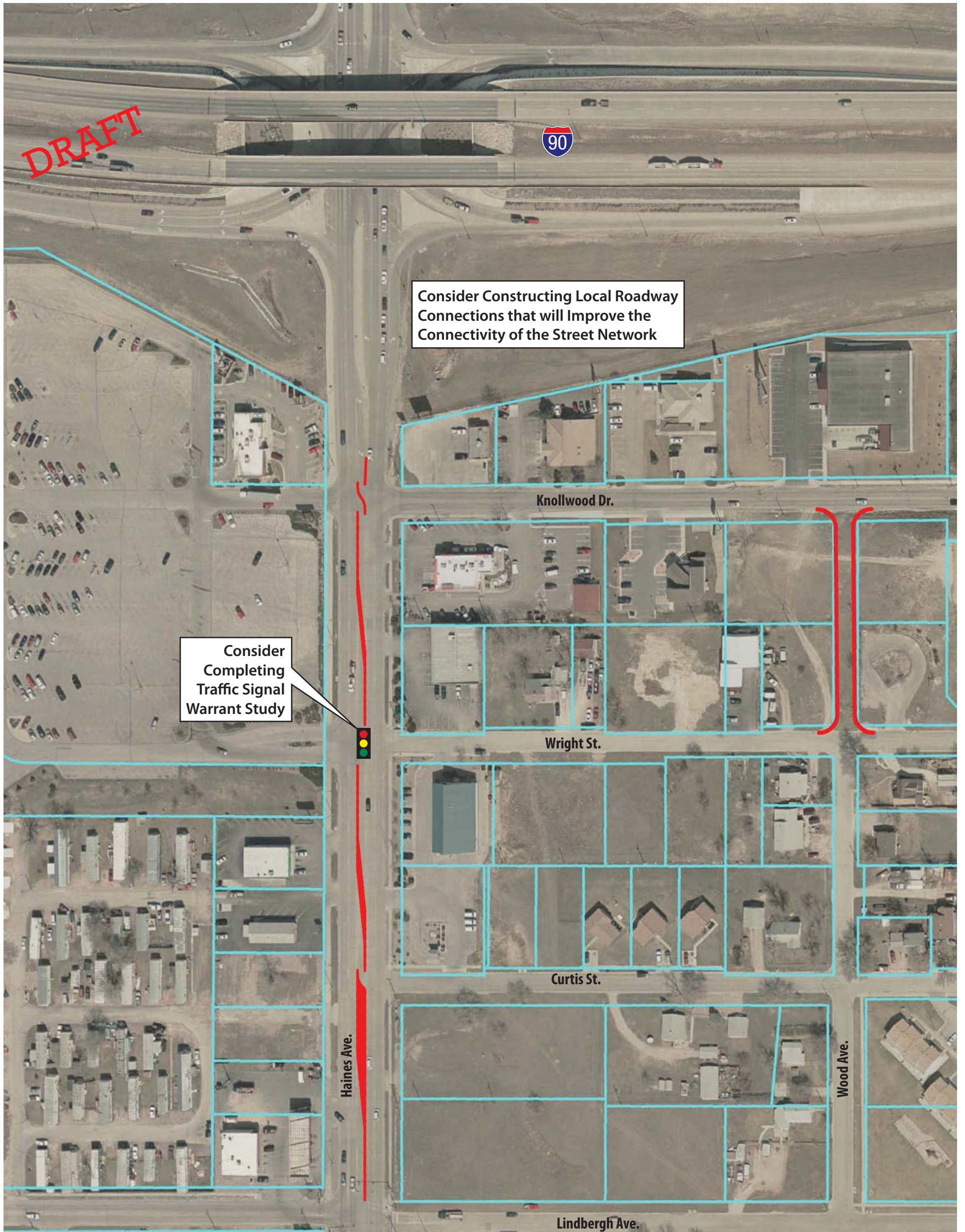
DRAFT



LEGEND		
Vehicle Movement	Fixed Objects	Severity
← Straight	□ Sign	■ Property Damage Only
⊥ Stopped	⦿ Signal	■ Injury
↻ Overturn	☁ Tree	■ Fatality
↪ Sideswipe	⊙ Pole	
▭ Parked	▣ Curb	
↪ Right Turn	⊗ Animal	
↪ Left Turn	⚡ Barrier/Rail	
↪ U-Turn	*** Fence	
× Pedestrian	● Rock/Boulder	
⊗ Bicycle		



Segment 1
Haines Avenue -
Lindbergh Avenue to I-90



APPENDIX C HAINES AVENUE – I-90 TO DISK DRIVE

DRAFT



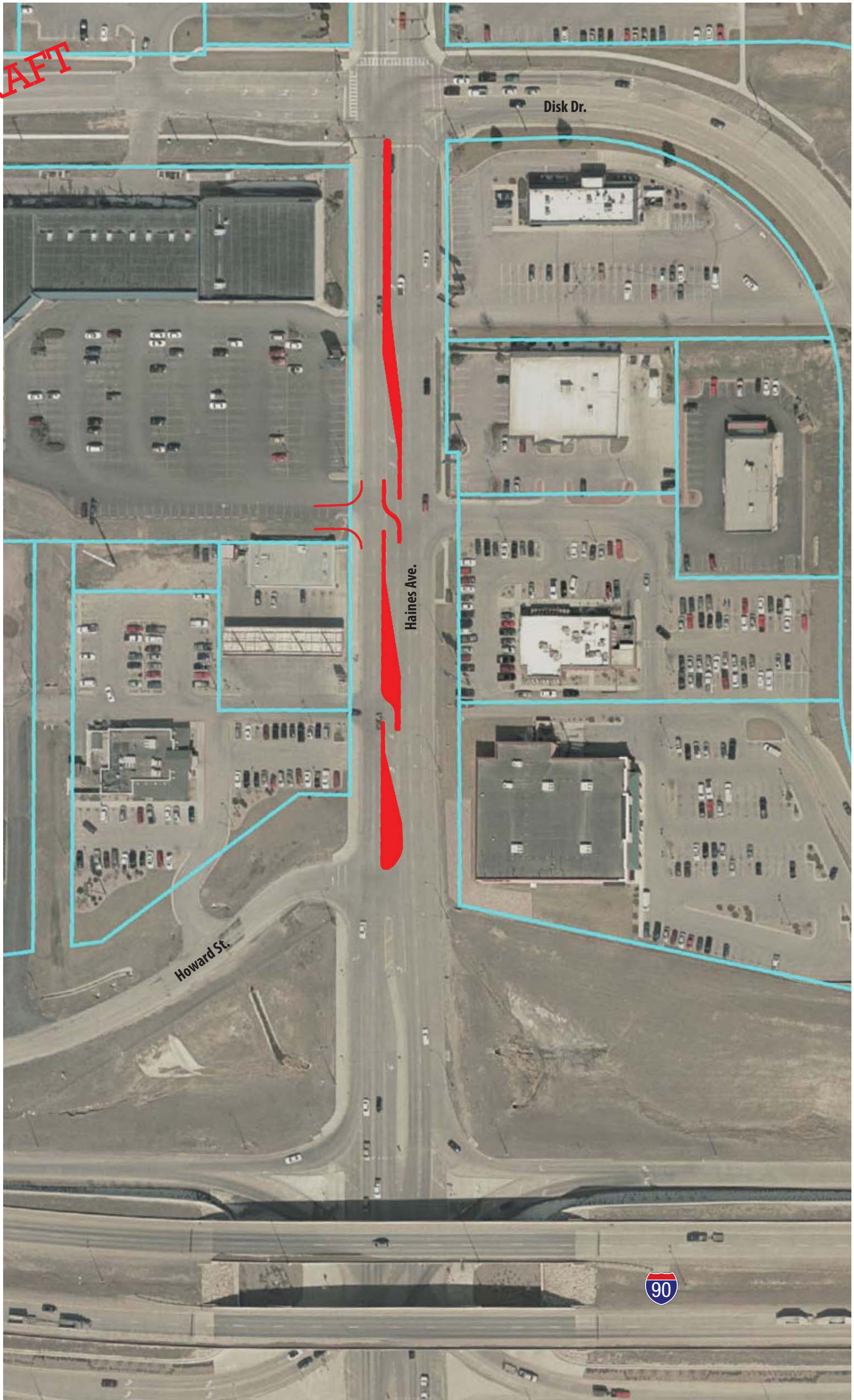
LEGEND		
Vehicle Movement	Fixed Objects	Severity
← Straight	□ Sign	■ Property Damage Only
⊥ Stopped	Ⓜ Signal	■ Injury
↻ Overturn	☁ Tree	■ Fatality
↪ Sideswipe	⊙ Pole	
▭ Parked	▣ Curb	
↪ Right Turn	⚡ Animal	
↪ Left Turn	⚡ Barrier/Rail	
↪ U-Turn	⚡ Fence	
× Pedestrian	● Rock/Boulder	
⚡ Bicycle		



Segment 2
Haines Avenue -
I-90 to Disk Drive



DRAFT



Concept for Segment 2
Haines Avenue -
I-90 to Disk Drive



APPENDIX D ST. JOSEPH STREET – 5TH TO EAST BOULEVARD

DRAFT



LEGEND

Vehicle Movement	Fixed Objects	Severity
← Straight	□ Sign	■ Property Damage Only
⊥ Stopped	Ⓜ Signal	■ Injury
⊗ Overturn	☁ Tree	■ Fatality
↪ Sideswipe	Ⓚ Pole	
Ⓚ Parked	Ⓚ Curb	
↪ Right Turn	⊗ Animal	
↪ Left Turn	▬ Barrier/Rail	
↪ U-Turn	*** Fence	
× Pedestrian	● Rock/Boulder	
⊗ Bicycle		

▲ NORTH

Segment 3
Saint Joseph Street -
5th Street to East Boulevard

DRAFT

