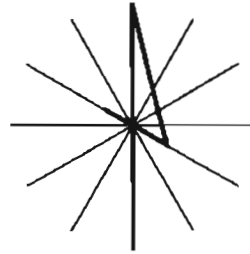
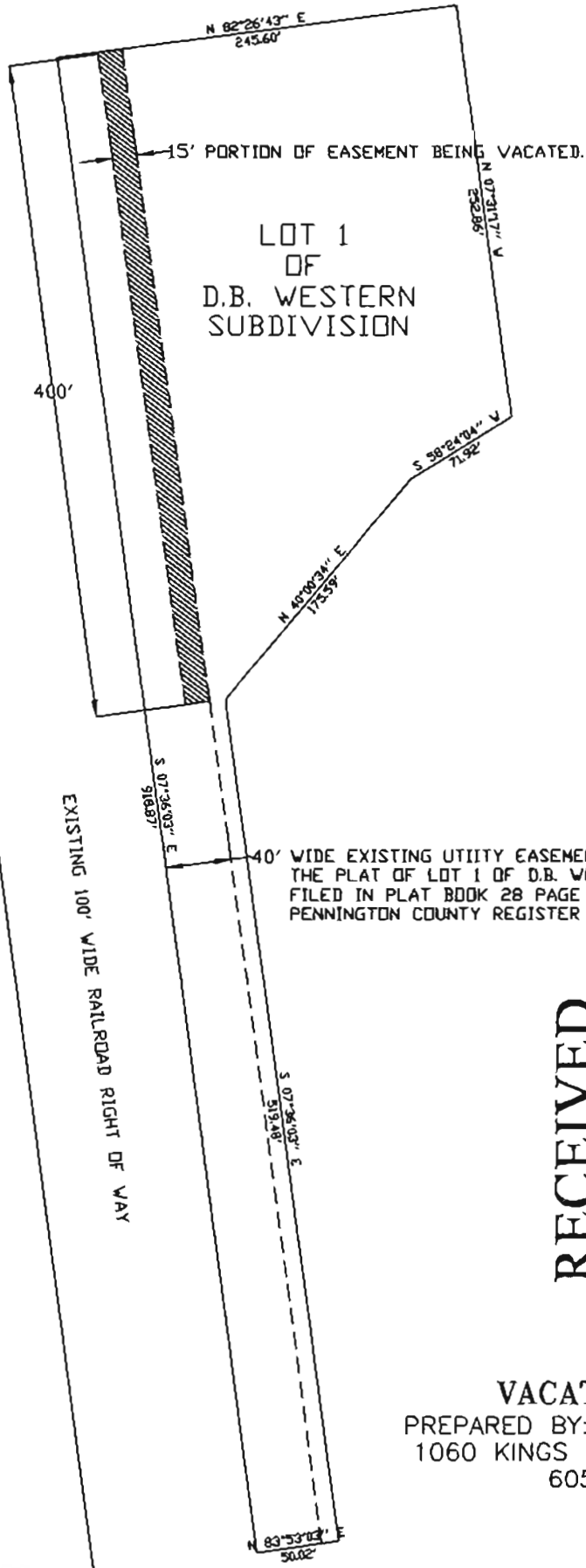


VACATION EXHIBIT A

LEGAL DESCRIPTION: LOT 1 OF D.B. WESTERN SUBDIVISION LOCATED IN
NW1/4 OF SW1/4 SECTION 17, T1N, R8E, BHM.
RAPID CITY, PENNINGTON COUNTY, SOUTH DAKOTA.

11VE018



DATE: 07-22-2011

SCALE: 1"=100'



RECEIVED

JUL 22 2011

Rapid City Growth
Management Department



VACATION EXHIBIT A
PREPARED BY: DAVIS ENGINEERING, INC.
1060 KINGS ROAD--RAPID CITY, SD
605-341-3095