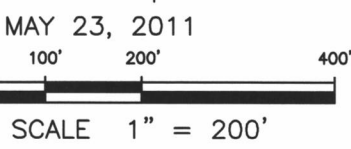
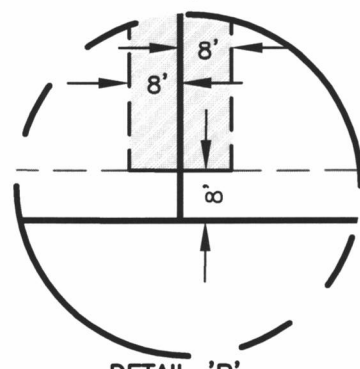
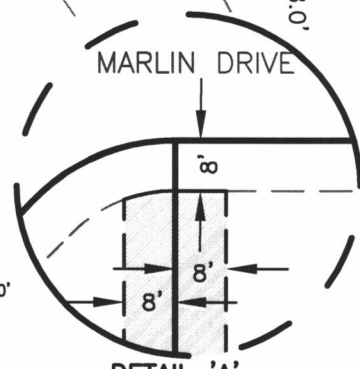
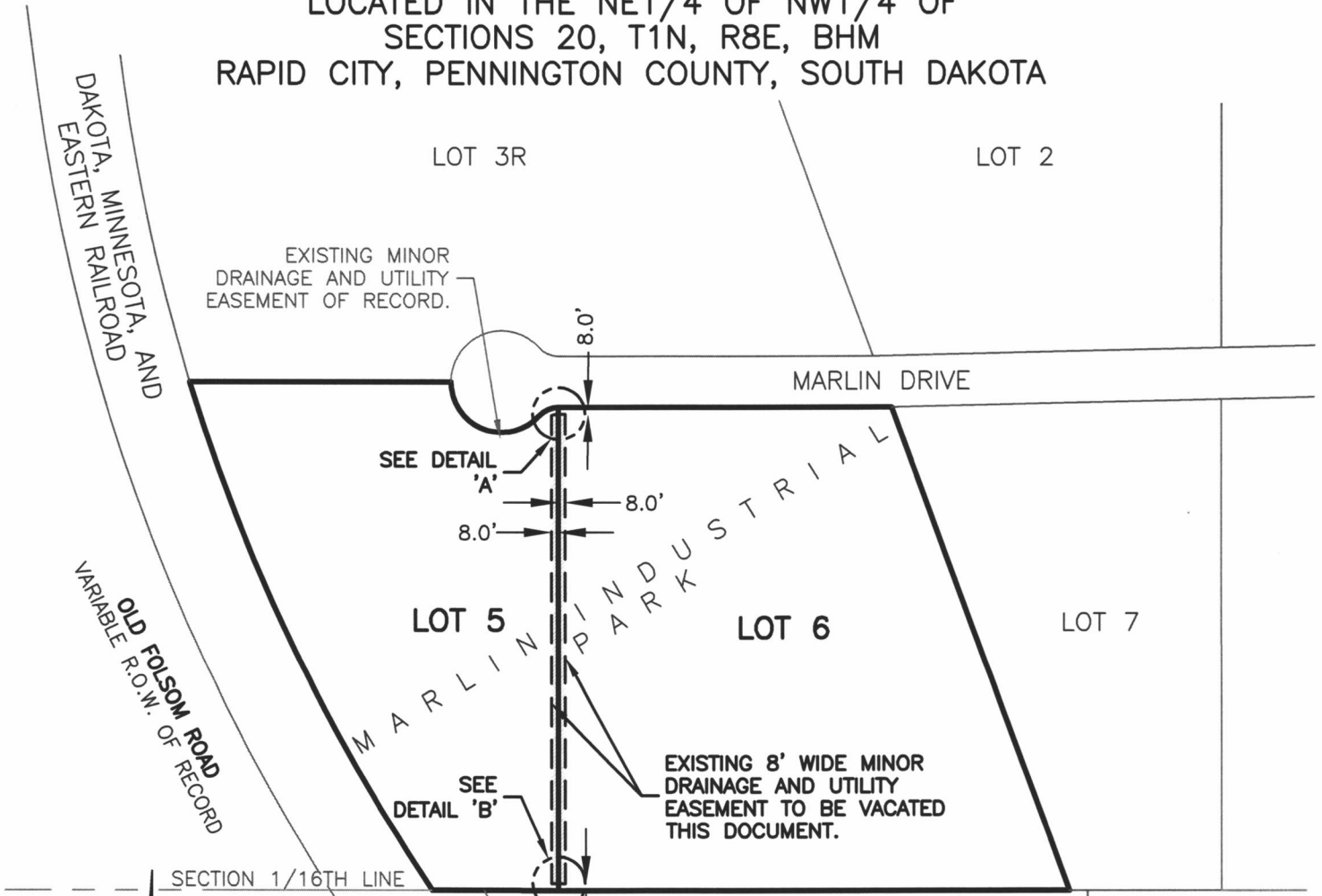


# EXHIBIT 'A' VACATION OF 8' WIDE MINOR DRAINAGE AND UTILITY EASEMENT LOTS 5 AND 6

**MARLIN INDUSTRIAL PARK**  
LOCATED IN THE NE1/4 OF NW1/4 OF  
SECTIONS 20, T1N, R8E, BHM  
RAPID CITY, PENNINGTON COUNTY, SOUTH DAKOTA



**RENNER & ASSOCIATES, LLC.**

616 SIXTH ST. \* RAPID CITY, SD 57701  
PHONE: 605/721-7310 FAX: 605/721-7313  
SPEARFISH OFFICE: 605/717-0016

