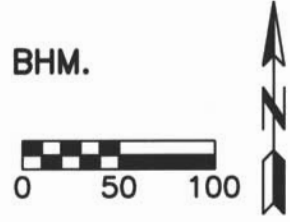


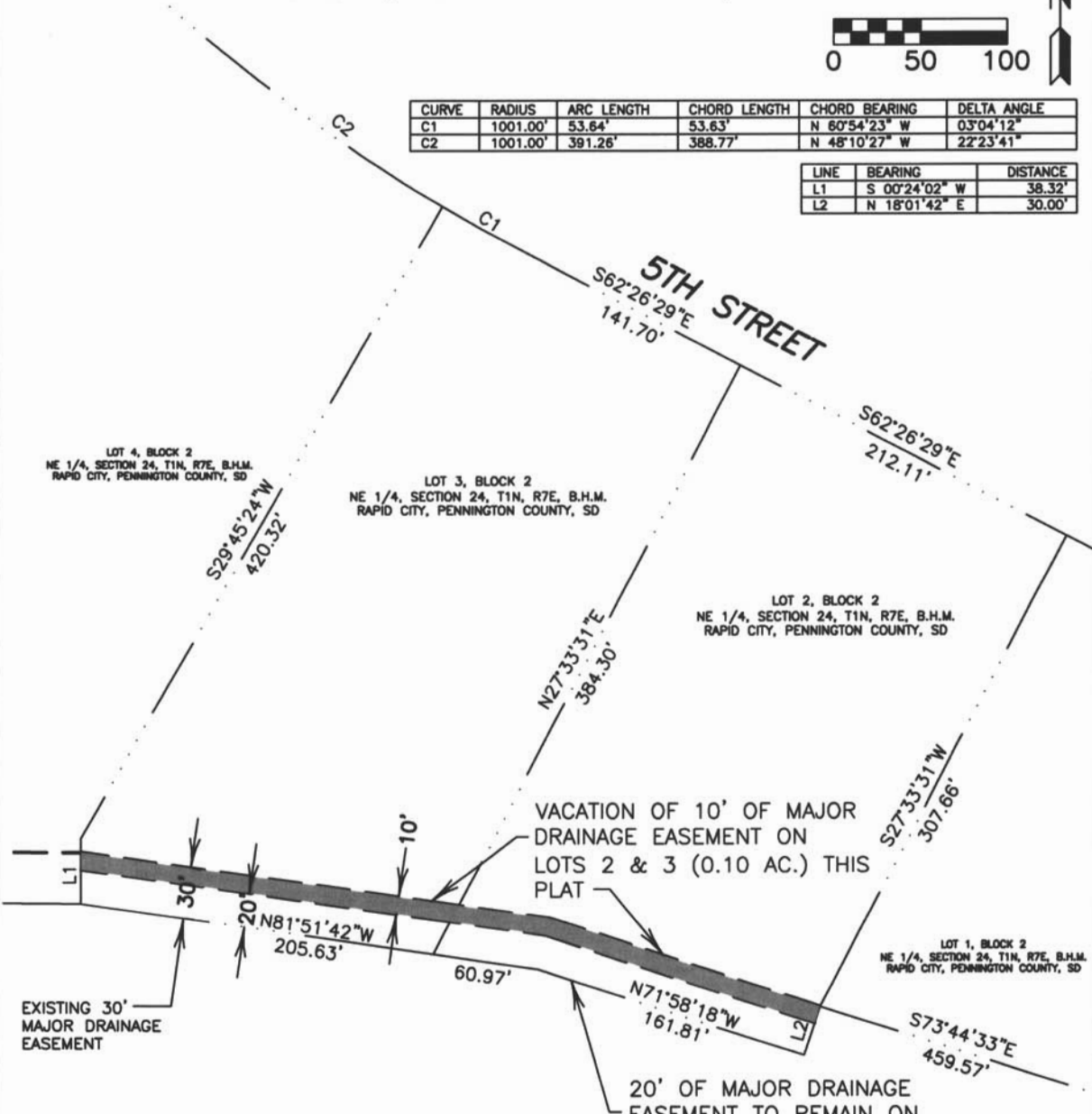
EXHIBIT "A"

VACATION OF A PORTION OF THE MAJOR DRAINAGE EASEMENT
 LOTS 2 & 3 OF BLOCK 2 OF
 FIFTH STREET OFFICE PLAZA
 LOCATED IN NE 1/4, SECTION 24, T1N, R7E, BHM.
 RAPID CITY, PENNINGTON COUNTY, SD



CURVE	RADIUS	ARC LENGTH	CHORD LENGTH	CHORD BEARING	DELTA ANGLE
C1	1001.00'	53.64'	53.63'	N 60°54'23" W	0°3'04"12"
C2	1001.00'	391.26'	388.77'	N 48°10'27" W	22°23'41"

LINE	BEARING	DISTANCE
L1	S 00°24'02" W	38.32'
L2	N 18°01'42" E	30.00'



RECEIVED

MAY 27 2011

Rapid City Growth
 Management Department

cetec
 ENGINEERING SERVICES, INC.

1560 Concourse Dr.
 Rapid City, SD 57703
 Phone: (605) 341-7800
 Fax: (605) 341-7864
 www.cetecengineering.com
 Date: 5/26/10