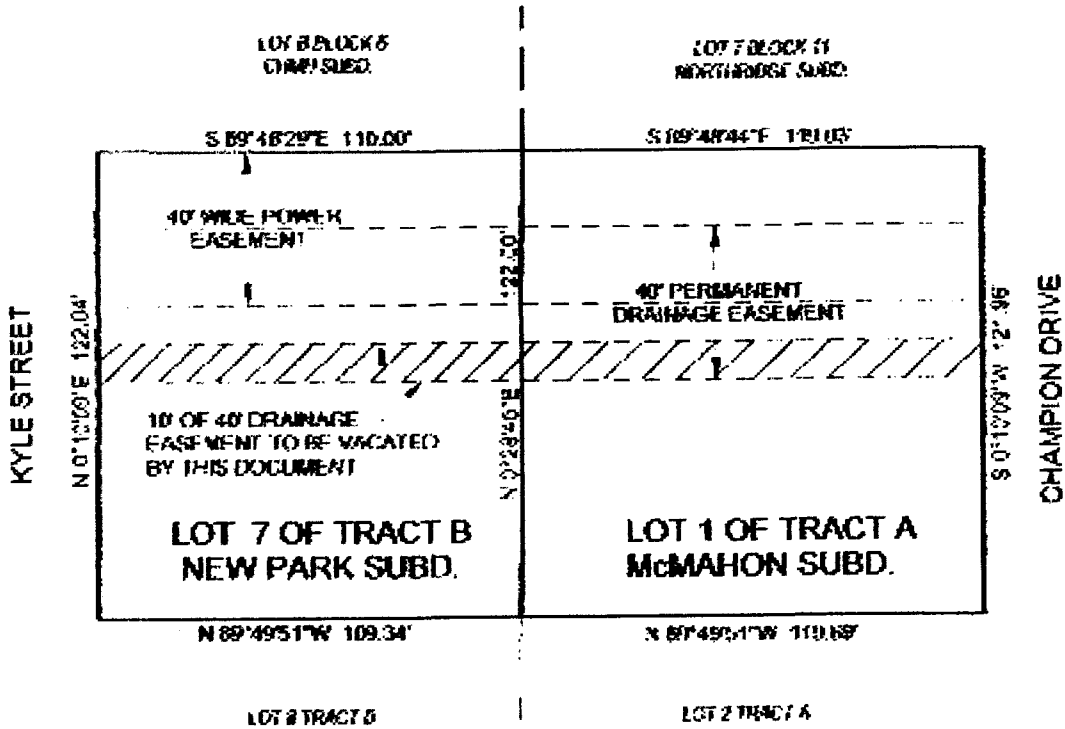


### EXHIBIT A

VACATION OF PORTION OF DRAINAGE EASEMENT  
LOCATED IN LOT 7 OF TRACT B OF NEW PARK SUBDIVISION  
AND LOT 1 OF TRACT A OF McMAHON SUBDIVISION  
RAPID CITY, PENNINGTON COUNTY, SOUTH DAKOTA



PREPARED BY:  
HANSON SURVEYING & MAPPING  
832 HORACE MANN DRIVE  
RAPID CITY, SD 57701  
605-388-9652  
APRIL 18, 2011

