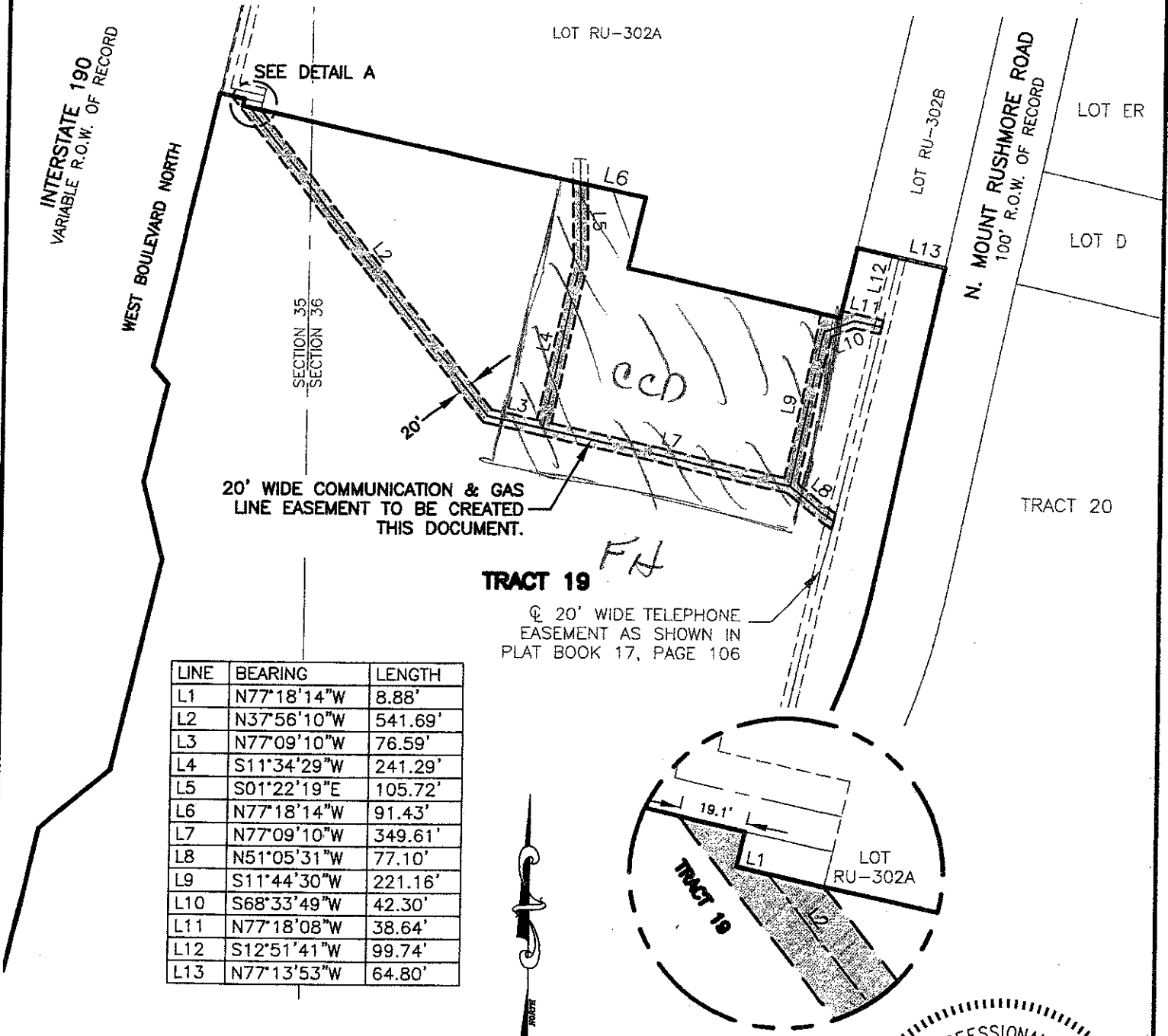


20' WIDE COMMUNICATION & GAS LINE EASEMENT TRACT 19 OF THE RAPID CITY GREENWAY TRACT

LOCATED IN THE E1/2 OF SECTION 35 AND IN THE W1/2 OF SECTION 36
ALL IN T2N, R7E, BHM,
RAPID CITY, PENNINGTON COUNTY, SOUTH DAKOTA

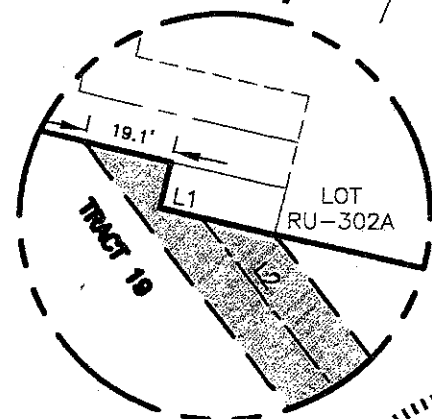


20' WIDE COMMUNICATION & GAS
LINE EASEMENT TO BE CREATED
THIS DOCUMENT.

TRACT 19

Ⓞ 20' WIDE TELEPHONE
EASEMENT AS SHOWN IN
PLAT BOOK 17, PAGE 106

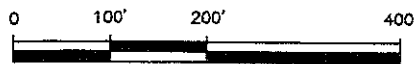
LINE	BEARING	LENGTH
L1	N77°18'14"W	8.88'
L2	N37°56'10"W	541.69'
L3	N77°09'10"W	76.59'
L4	S11°34'29"W	241.29'
L5	S01°22'19"E	105.72'
L6	N77°18'14"W	91.43'
L7	N77°09'10"W	349.61'
L8	N51°05'31"W	77.10'
L9	S11°44'30"W	221.16'
L10	S68°33'49"W	42.30'
L11	N77°18'08"W	38.64'
L12	S12°51'41"W	99.74'
L13	N77°13'53"W	64.80'



DETAIL A

DECEMBER 22, 2010

SCALE 1" = 40'



SCALE 1" = 200'

RENNER & ASSOCIATES, LLC.

616 SIXTH ST. * RAPID CITY, SD 57701
PHONE: 605/721-7310 FAX: 605/721-7313
SPEARFISH OFFICE: 605/717-0016



CITY HALL 1903

