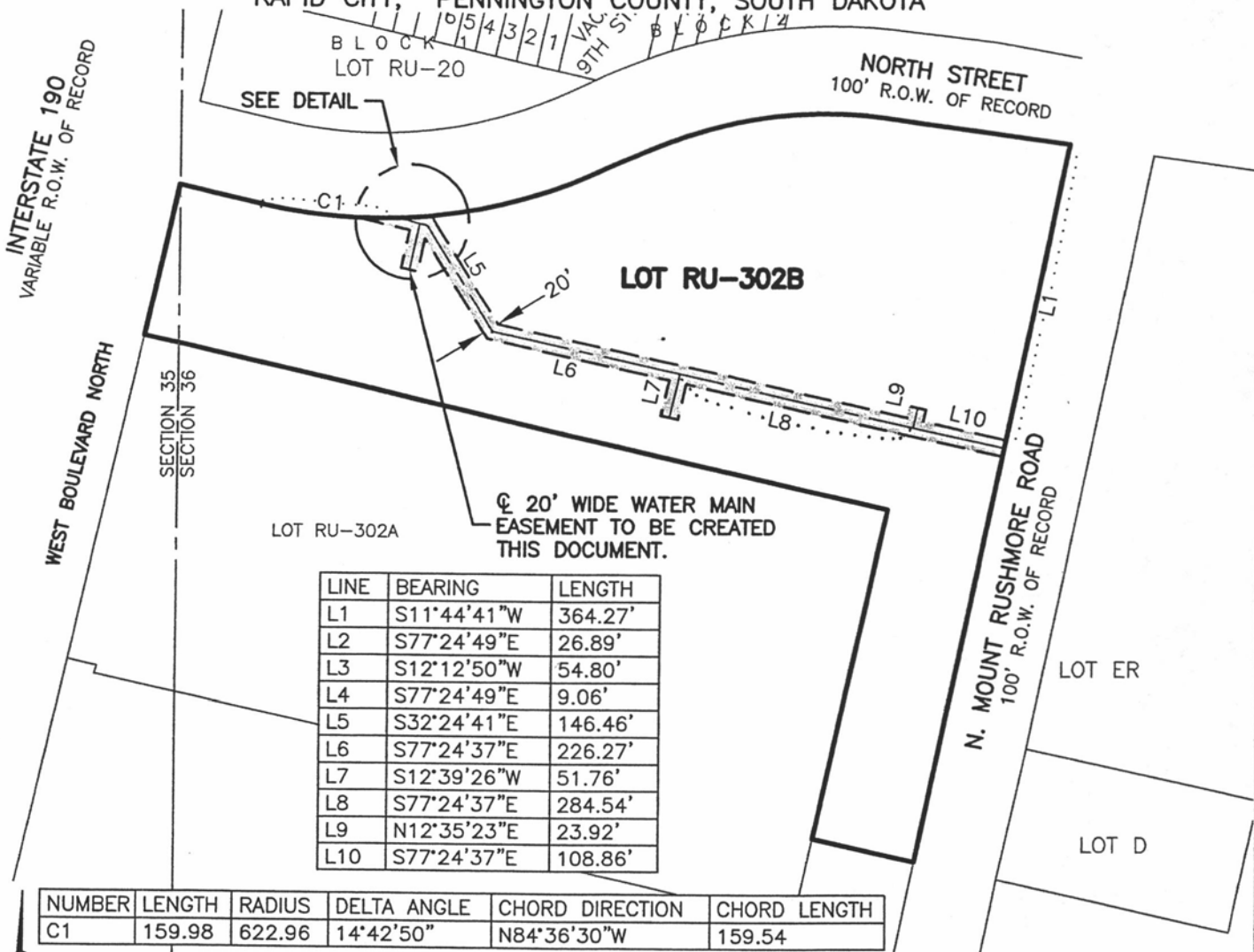


20' WIDE WATER MAIN EASEMENT LOT RU-302B OF THE ORIGINAL TOWNSITE OF RAPID CITY

LOCATED IN THE E1/2 OF SECTION 35 AND IN THE W1/2 OF SECTION 36

ALL IN T2N, R7E, BHM,

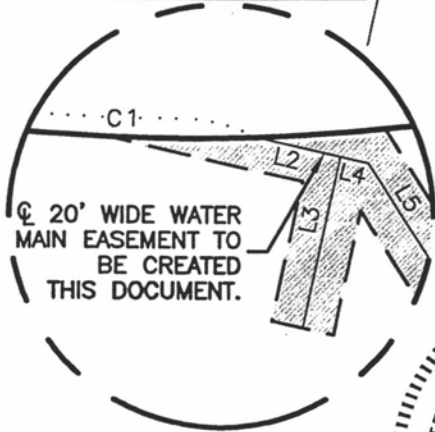
RAPID CITY, PENNINGTON COUNTY, SOUTH DAKOTA



⊙ 20' WIDE WATER MAIN EASEMENT TO BE CREATED THIS DOCUMENT.

LINE	BEARING	LENGTH
L1	S11°44'41"W	364.27'
L2	S77°24'49"E	26.89'
L3	S12°12'50"W	54.80'
L4	S77°24'49"E	9.06'
L5	S32°24'41"E	146.46'
L6	S77°24'37"E	226.27'
L7	S12°39'26"W	51.76'
L8	S77°24'37"E	284.54'
L9	N12°35'23"E	23.92'
L10	S77°24'37"E	108.86'

NUMBER	LENGTH	RADIUS	DELTA ANGLE	CHORD DIRECTION	CHORD LENGTH
C1	159.98	622.96	14°42'50"	N84°36'30"W	159.54



⊙ 20' WIDE WATER MAIN EASEMENT TO BE CREATED THIS DOCUMENT.

DETAIL

SCALE 1" = 60'

RENNER & ASSOCIATES, LLC.

616 SIXTH ST. * RAPID CITY, SD 57701
 PHONE: 605/721-7310 FAX: 605/721-7313
 SPEARFISH OFFICE: 605/717-0016



JANUARY 24, 2010



SCALE 1" = 200'



CITY HALL 1903