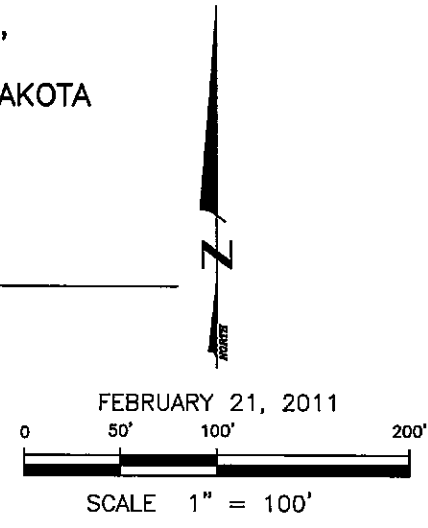
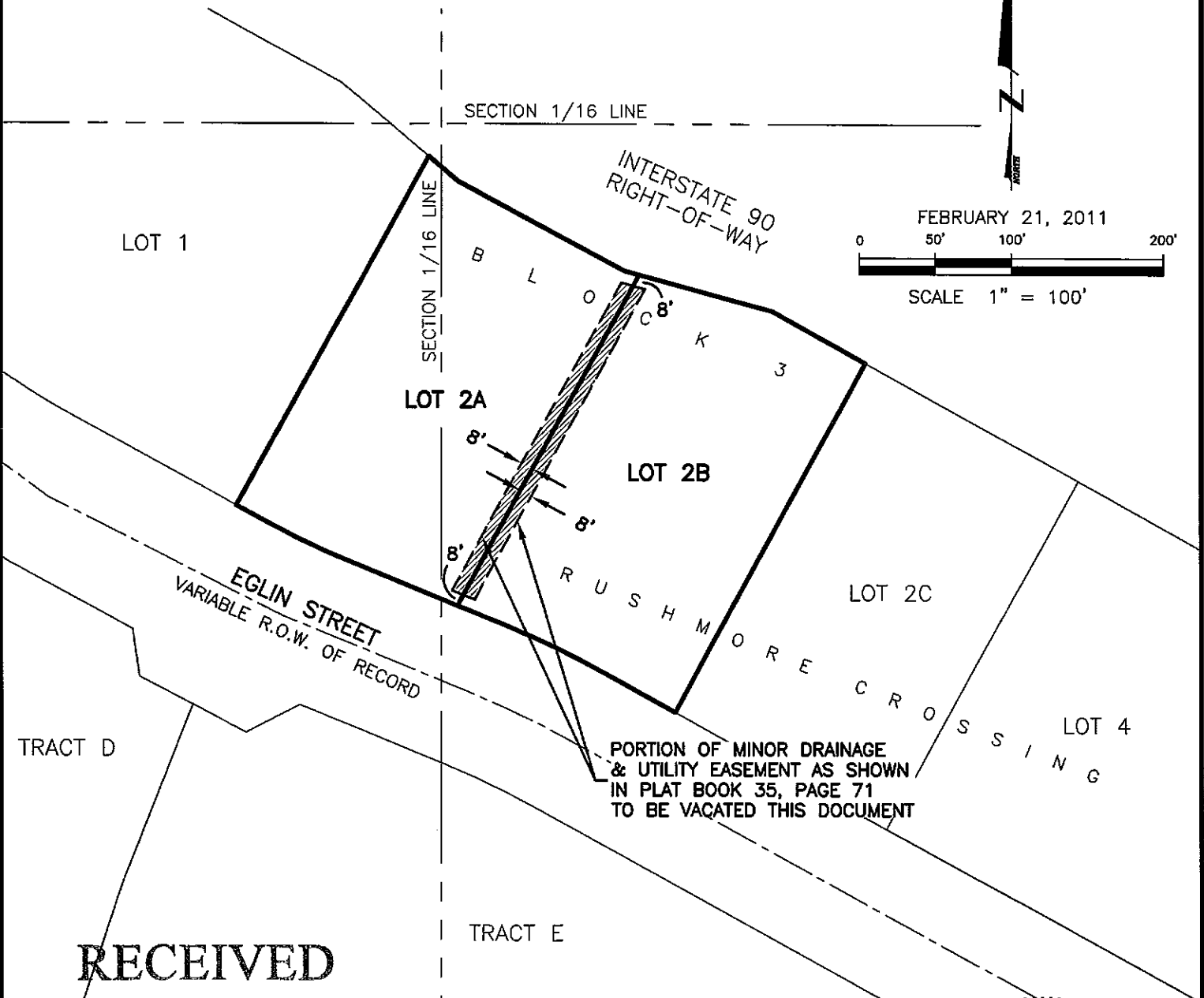


EXHIBIT 'A'

VACATION OF MINOR DRAINAGE AND UTILITY EASEMENT LOTS 2A & 2B, BLOCK 3 RUSHMORE CROSSING

LOCATED IN THE S1/2 OF THE SW1/4,
SECTION 29, T2N, R8E, BHM
RAPID CITY, PENNINGTON COUNTY, SOUTH DAKOTA



RECEIVED

FEB 21 2011

Rapid City Growth
Management Department



CITY HALL 1903

RENNER & ASSOCIATES, LLC.

616 SIXTH ST. * RAPID CITY, SD 57701
PHONE: 605/721-7310 * FAX: 605/721-7313
EMAIL: GARY@RENNERASSOC.COM

