

Southbound motorists have skewed approach angle.

Distance from stop bar through Intersection creates delay for WB drivers

260'

End Reconstruction (40+00.0)

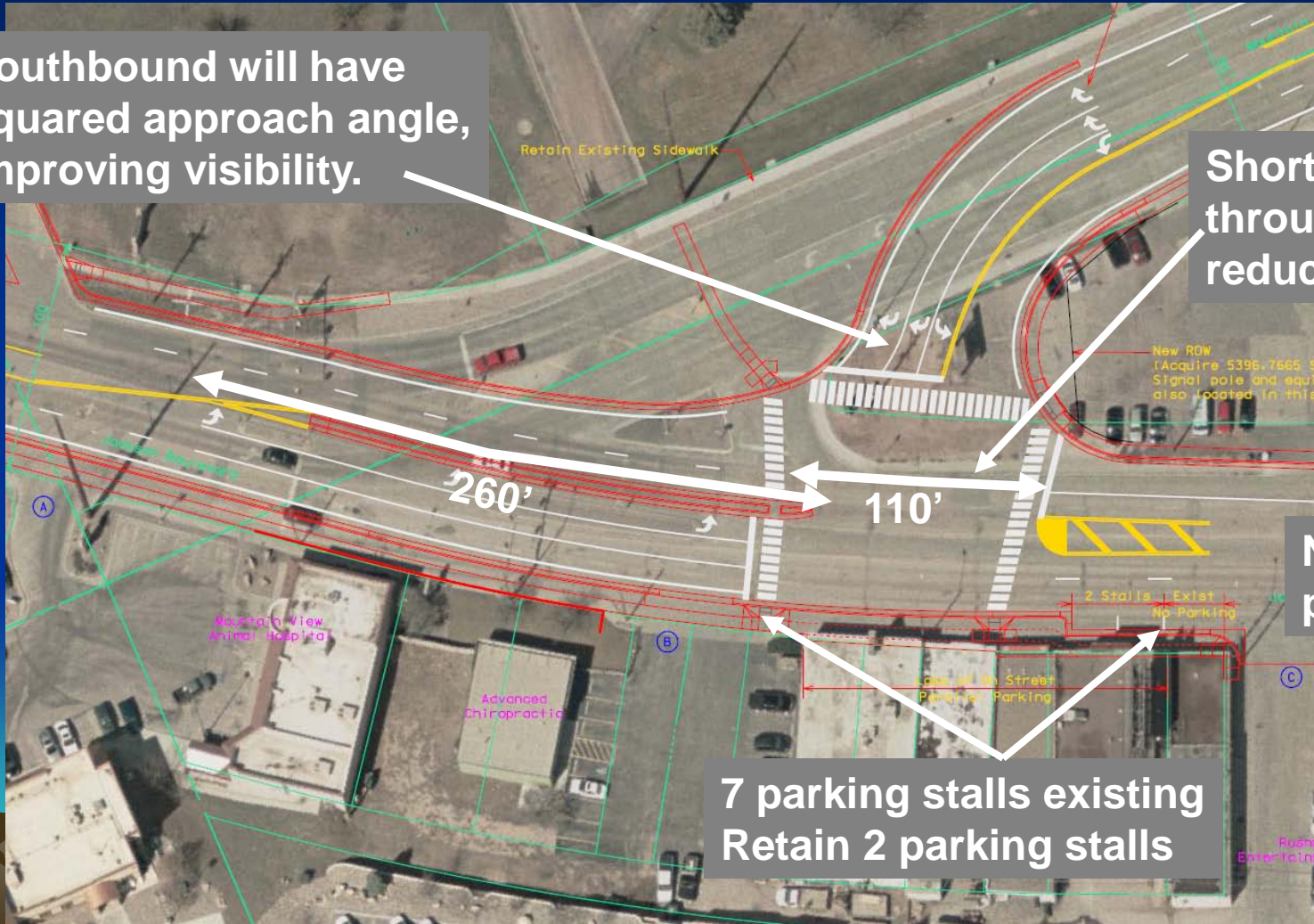
## NEW PROPOSED DESIGN - Intersection with Mountain View Rd.

Southbound will have squared approach angle, improving visibility.

Shorter distance through Intersection reduces driver delay

New design more pedestrian friendly

7 parking stalls existing  
Retain 2 parking stalls





# USER COST COMPARISON FOR NEW INTERSECTION

Item	Original design	New design
Annual User* Cost (\$M)	\$0.443	\$0.303
Construction Cost (\$M)	\$0.243	\$0.491
Years to Recoup Construction \$ via User Cost Savings	NA	1.8
40 Year User Cost (\$M)	\$17.720	\$12.120
40 year User Cost Saving (\$M)	\$0.000	\$5.600

\* User Cost based on avg vehicle delay and DOL costs of \$.20/min (cars) and \$0.27/min (trucks)

## NEW PROPOSED DESIGN Access South of Intersection

