

EXHIBIT A

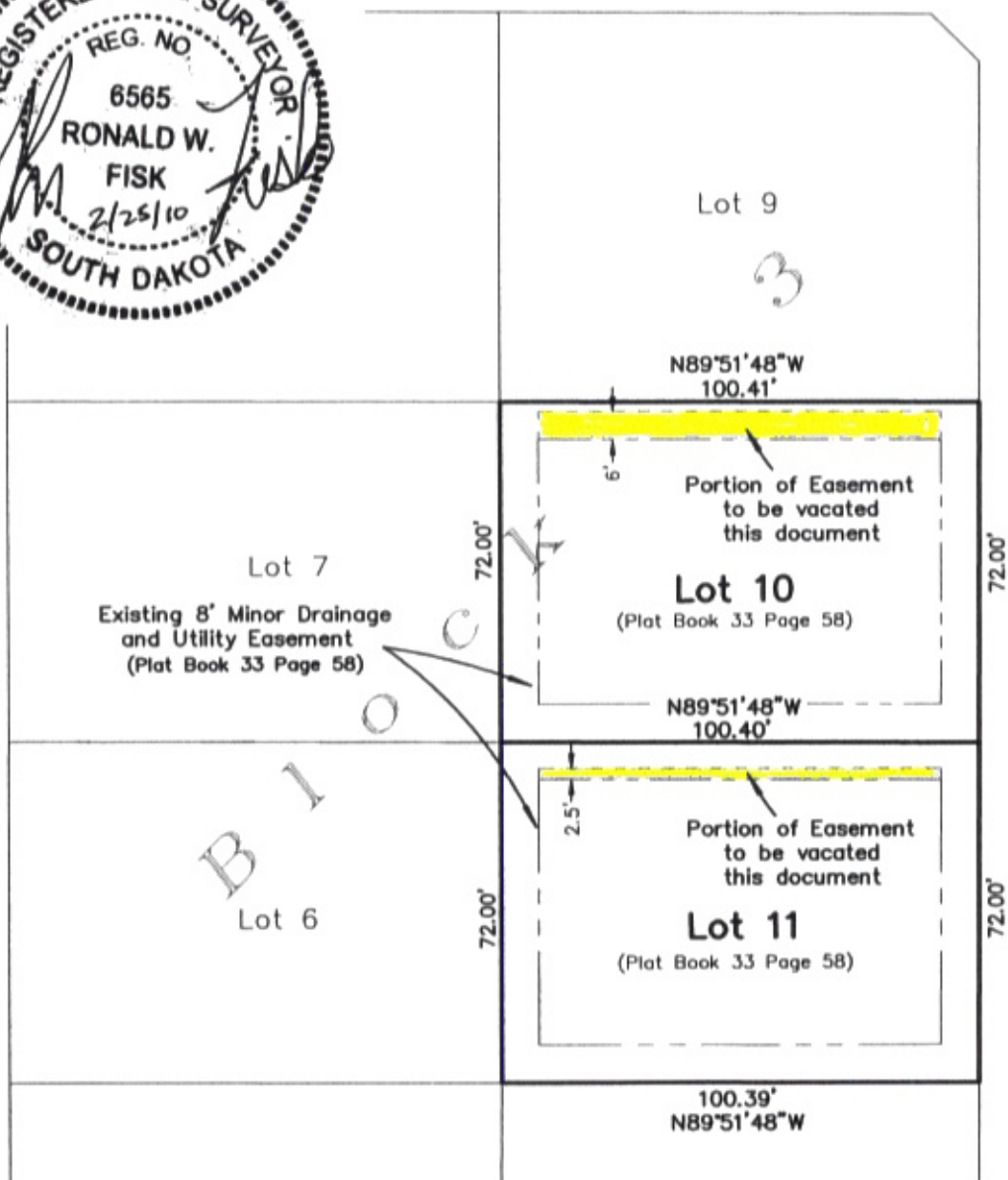
VACATION OF EASEMENT
LOTS 10 AND 11, BLOCK 3, SOUTH POINTE SUBDIVISION
LOCATED IN NE1/4 NE1/4 SECTION 24, T1N, R7E, BHM
RAPID CITY, PENNINGTON COUNTY, SOUTH DAKOTA



Enchanted Pines Drive

S89°37'31"E Previously dedicated
76' ROW

13 18
24 19



Parkview Drive

Previously dedicated
76' ROW

S0°08'32"W