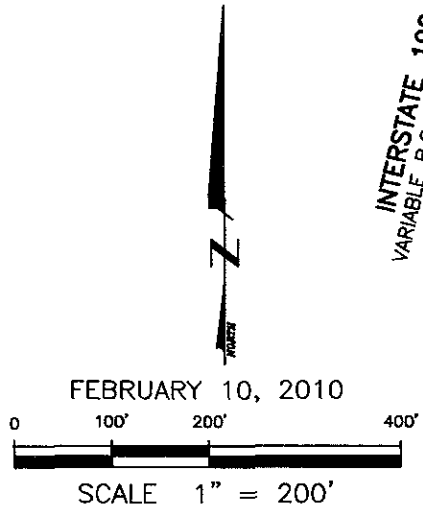
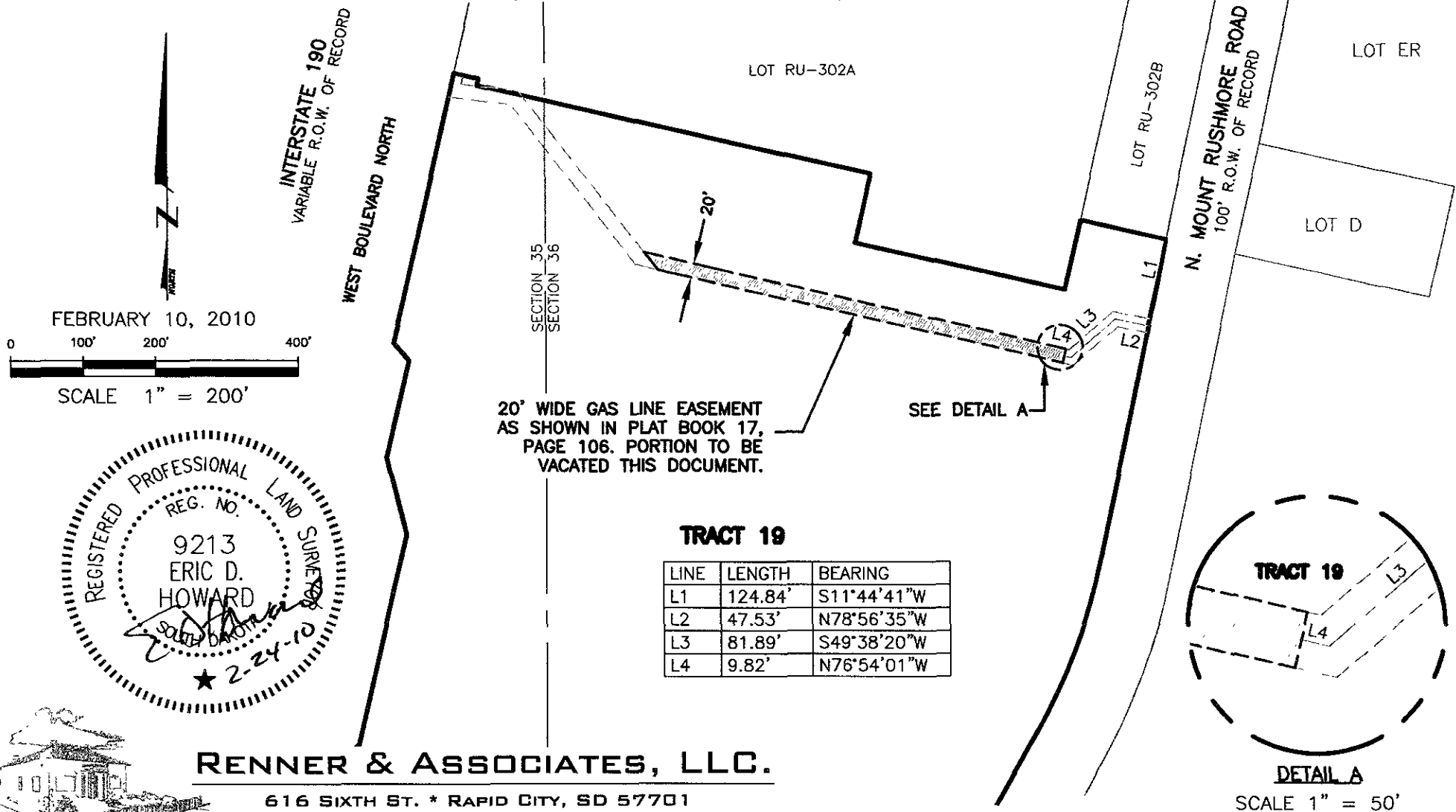


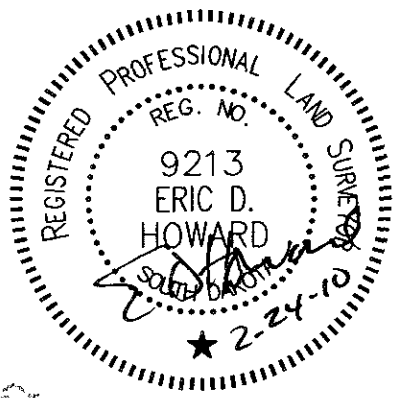
VACATION OF PORTION OF GAS LINE EASEMENT TRACT 19 OF THE ORIGINAL TOWNSITE OF RAPID CITY OF RAPID CITY GREENWAY TRACT

LOCATED IN THE E1/2 OF SECTION 35 AND IN THE W1/2 OF SECTION 36
ALL IN T2N, R7E, BHM,
RAPID CITY, PENNINGTON COUNTY, SOUTH DAKOTA



FEBRUARY 10, 2010

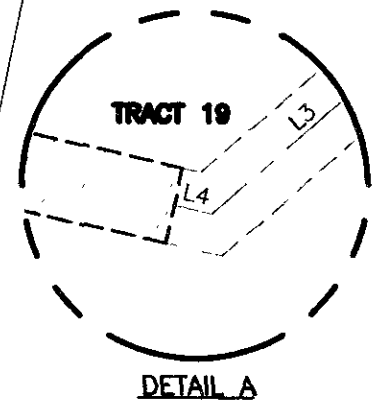
SCALE 1" = 200'



20' WIDE GAS LINE EASEMENT
AS SHOWN IN PLAT BOOK 17,
PAGE 106. PORTION TO BE
VACATED THIS DOCUMENT.

TRACT 19

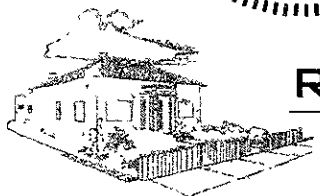
LINE	LENGTH	BEARING
L1	124.84'	S11°44'41"W
L2	47.53'	N78°56'35"W
L3	81.89'	S49°38'20"W
L4	9.82'	N76°54'01"W



SCALE 1" = 50'

RENNER & ASSOCIATES, LLC.

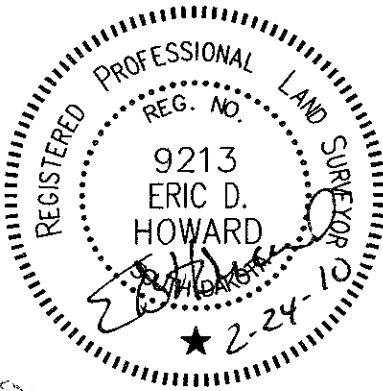
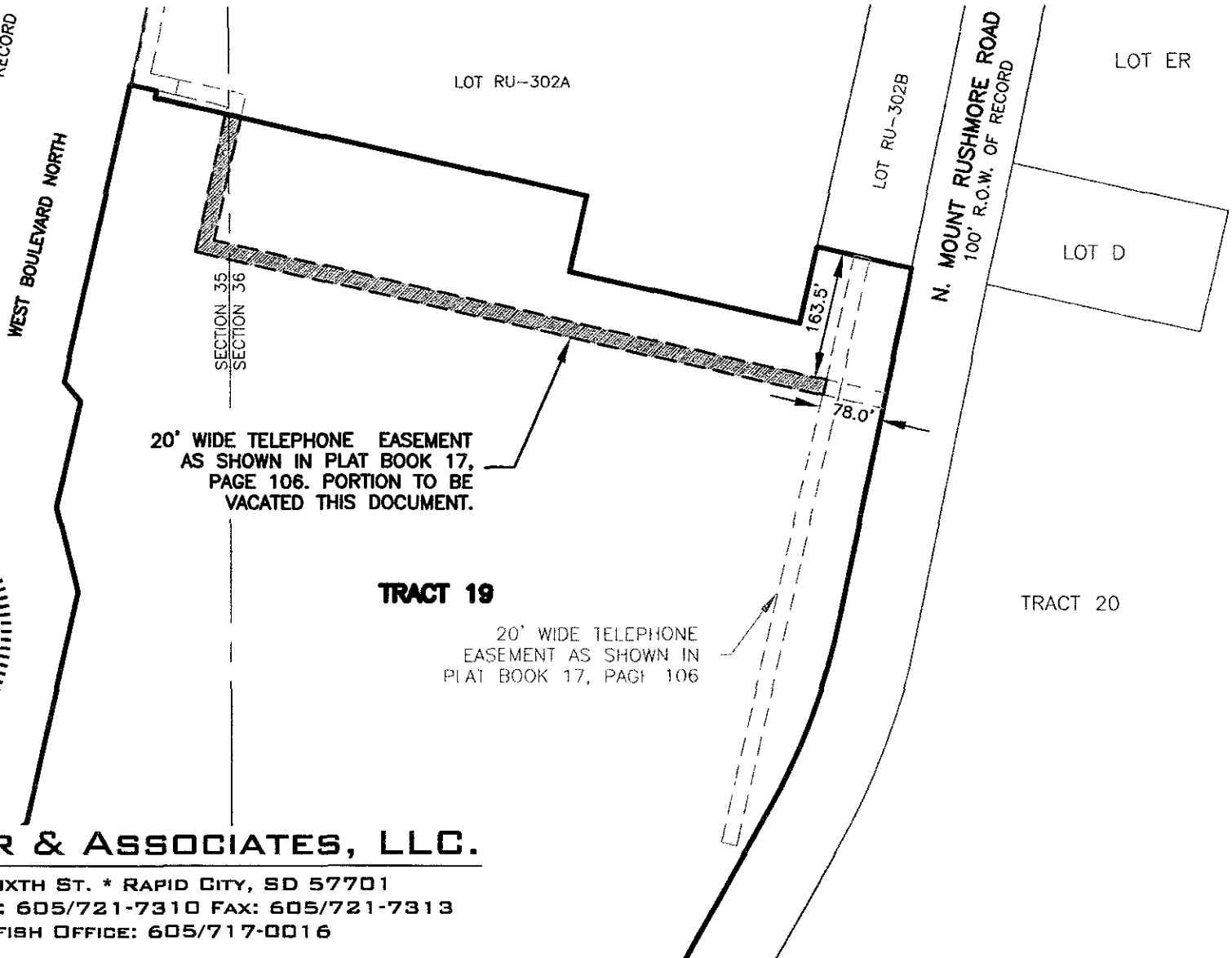
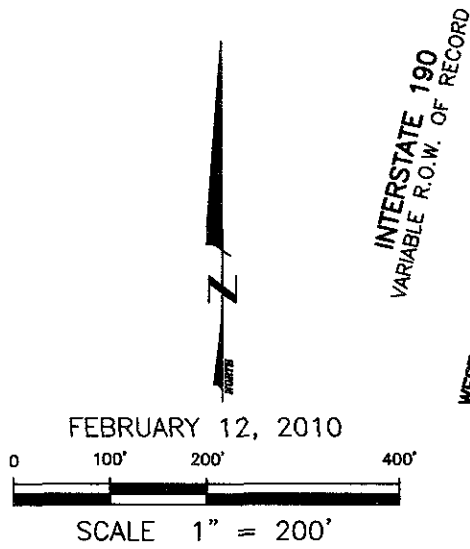
616 SIXTH ST. * RAPID CITY, SD 57701
PHONE: 605/721-7310 FAX: 605/721-7313
SPEARFISH OFFICE: 605/717-0016



CITY HALL 1903

VACATION OF PORTION OF TELEPHONE EASEMENT TRACT 19 OF THE ORIGINAL TOWNSITE OF RAPID CITY OF RAPID CITY GREENWAY TRACT

LOCATED IN THE E1/2 OF SECTION 35 AND IN THE W1/2 OF SECTION 36
ALL IN T2N, R7E, BHM,
RAPID CITY, PENNINGTON COUNTY, SOUTH DAKOTA



RENNER & ASSOCIATES, LLC.

616 SIXTH ST. * RAPID CITY, SD 57701
PHONE: 605/721-7310 FAX: 605/721-7313
SPEARFISH OFFICE: 605/717-0016

