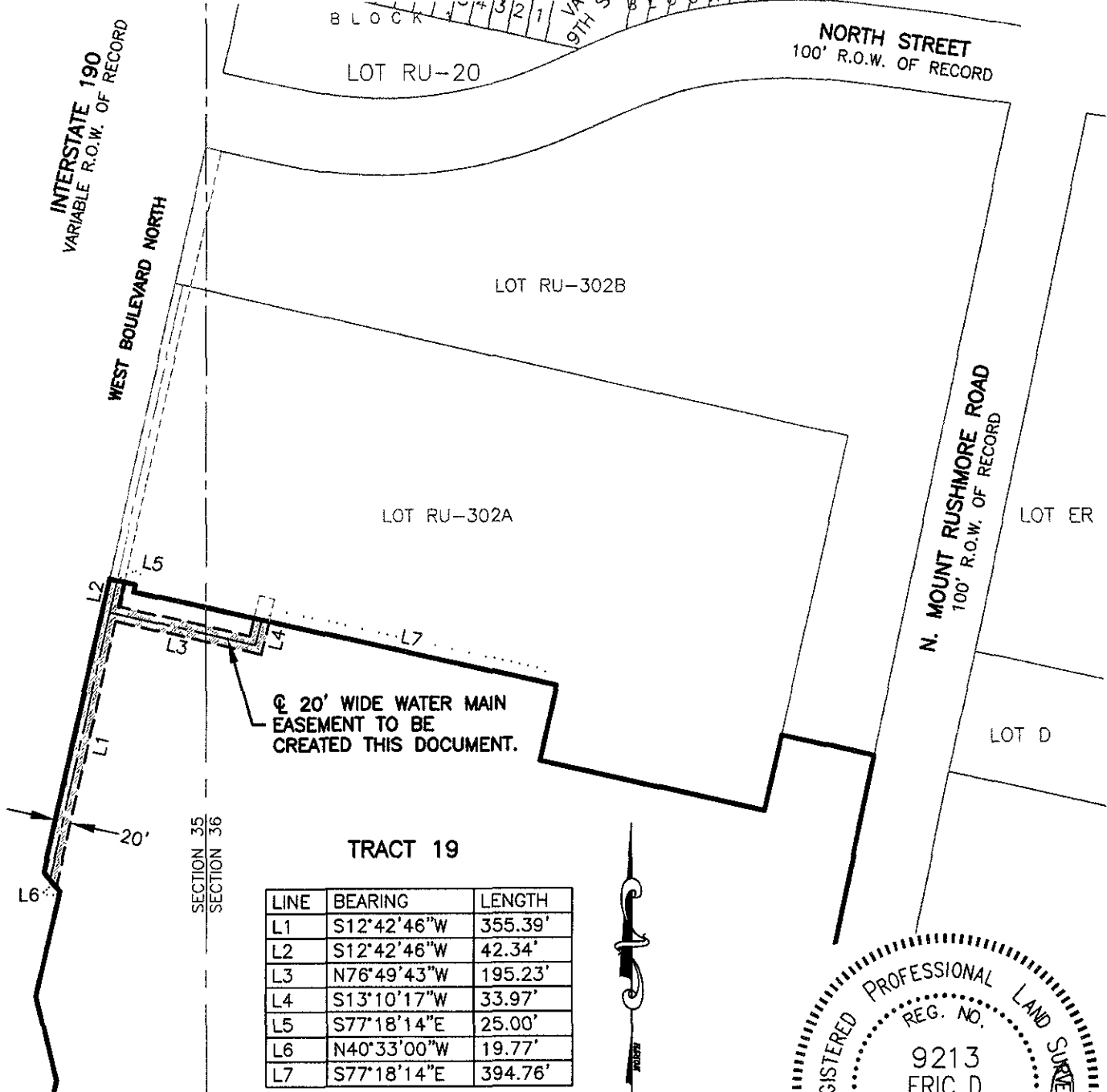


20' WIDE WATER MAIN EASEMENT TRACT 19 OF THE ORIGINAL TOWNSITE OF RAPID CITY OF RAPID CITY GREENWAY TRACT

LOCATED IN THE E1/2 OF SECTION 35 AND IN THE W1/2 OF SECTION 36

ALL IN T2N, R7E, BHM,
RAPID CITY, PENNINGTON COUNTY, SOUTH DAKOTA



The sidelines of easement are to be lengthened or shortened to conform to right-of-way lines and/or property lines.

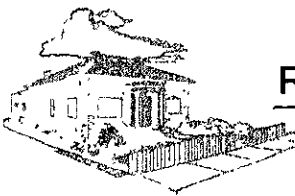
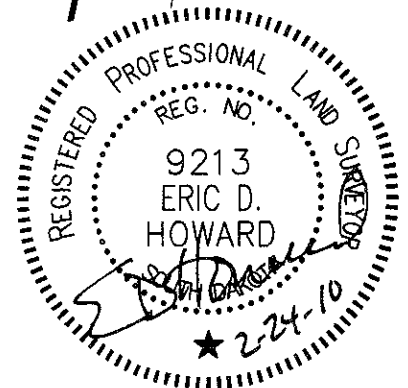
FEBRUARY 13, 2010



SCALE 1" = 200'

RENNER & ASSOCIATES, LLC.

616 SIXTH ST. * RAPID CITY, SD 57701
PHONE: 605/721-7310 FAX: 605/721-7313
SPEARFISH OFFICE: 605/717-0016

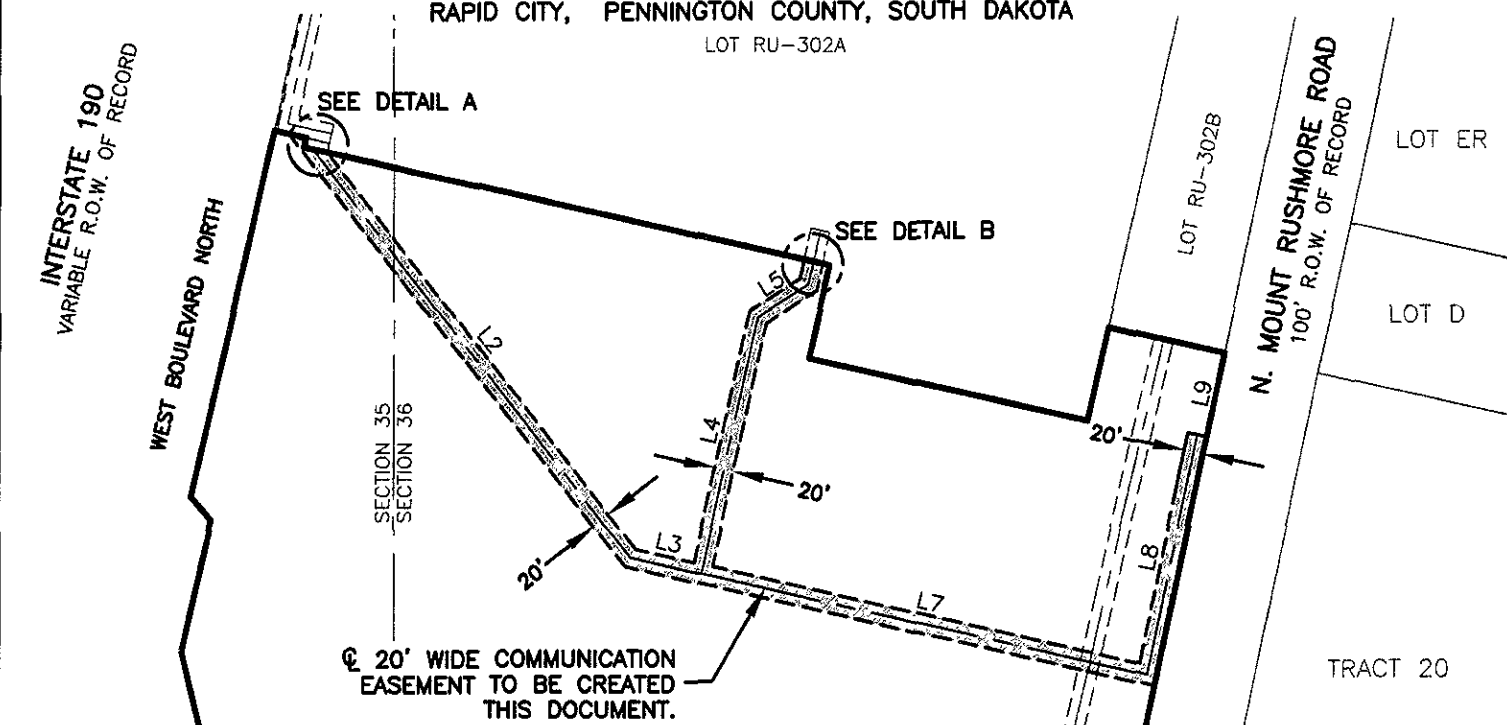


20' WIDE COMMUNICATION EASEMENT TRACT 19 OF THE ORIGINAL TOWNSITE OF RAPID CITY OF RAPID CITY GREENWAY TRACT

LOCATED IN THE E1/2 OF SECTION 35 AND IN THE W1/2 OF SECTION 36

ALL IN T2N, R7E, BHM,
RAPID CITY, PENNINGTON COUNTY, SOUTH DAKOTA

LOT RU-302A

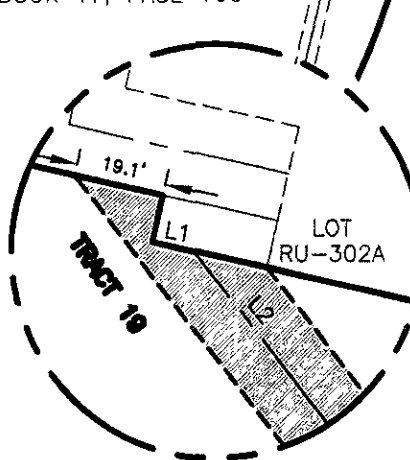


Ⓞ 20' WIDE COMMUNICATION
EASEMENT TO BE CREATED
THIS DOCUMENT.

TRACT 19

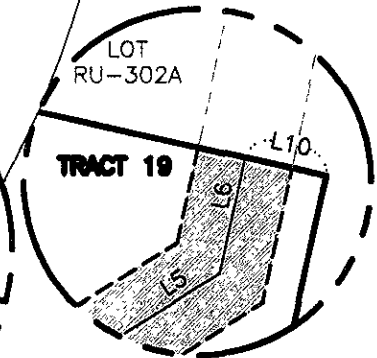
Ⓞ 20' WIDE TELEPHONE
EASEMENT AS SHOWN IN
PLAT BOOK 17, PAGE 106

LINE	LENGTH	BEARING
L1	8.88'	S77°18'14"E
L2	541.69'	N37°56'10"W
L3	76.59'	N77°09'10"W
L4	274.50'	S12°26'45"W
L5	63.56'	S57°45'06"W
L6	24.40'	S12°10'23"W
L7	480.39'	N77°09'10"W
L8	255.41'	S11°44'41"W
L9	89.34'	S11°44'41"W
L10	17.45'	N77°18'14"W



DETAIL A

SCALE 1" = 40'



DETAIL B

SCALE 1" = 40'

The sidelines of easement are to be lengthened or shortened to conform to right-of-way lines and/or property lines.

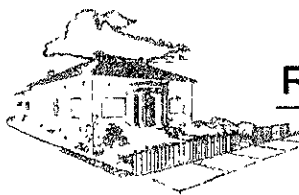
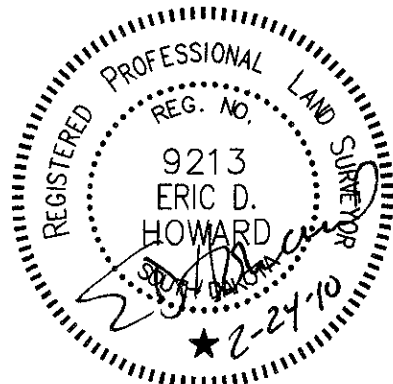
FEBRUARY 17, 2010



SCALE 1" = 200'

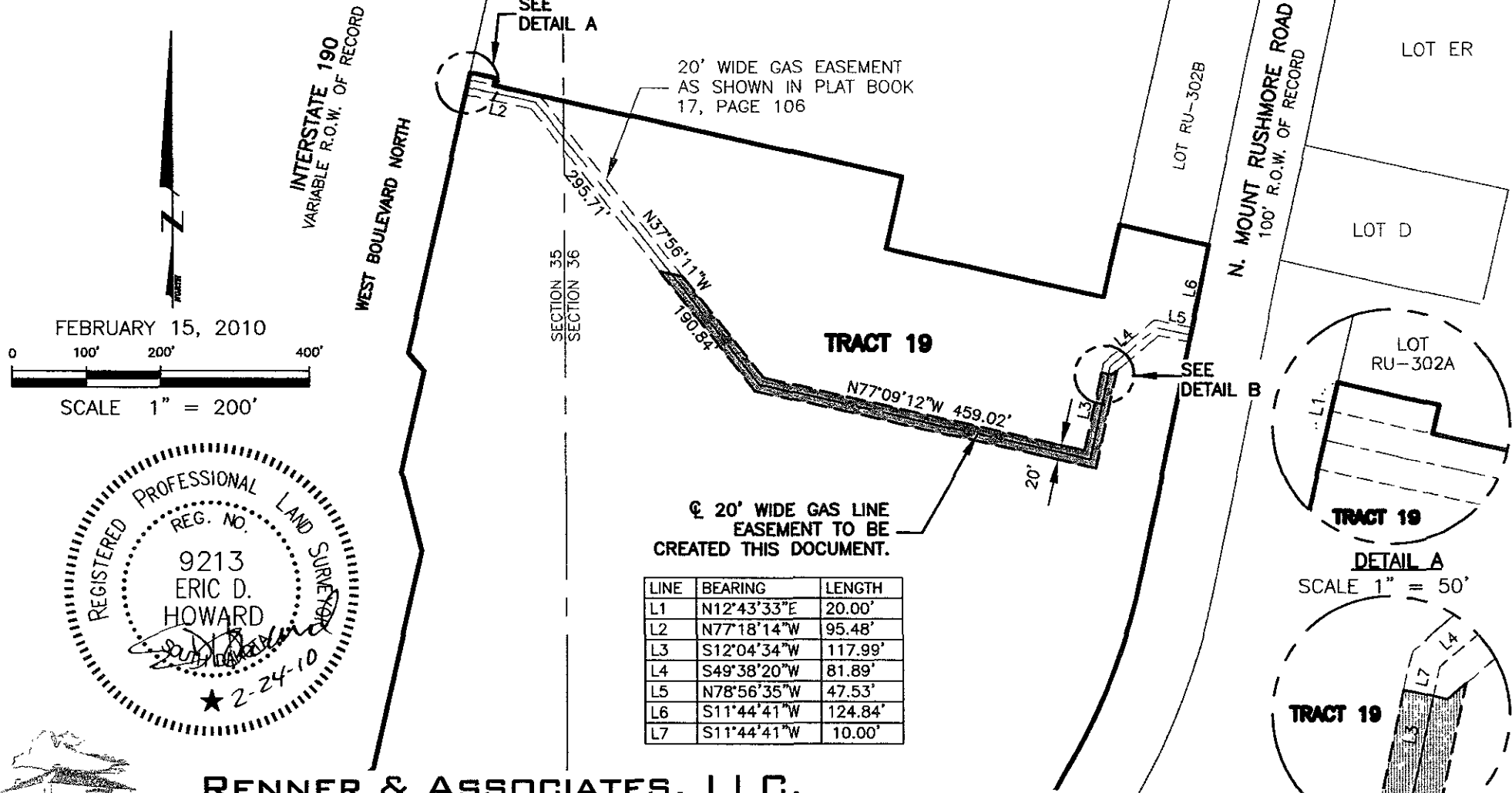
RENNER & ASSOCIATES, LLC.

616 SIXTH ST. * RAPID CITY, SD 57701
PHONE: 605/721-7310 FAX: 605/721-7313
SPEARFISH OFFICE: 605/717-0016

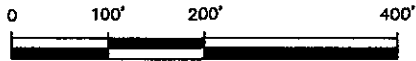


20' WIDE GAS LINE EASEMENT TRACT 19 OF THE ORIGINAL TOWNSITE OF RAPID CITY OF RAPID CITY GREENWAY TRACT

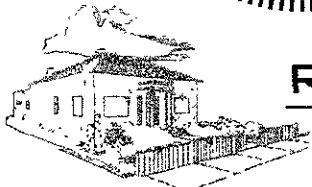
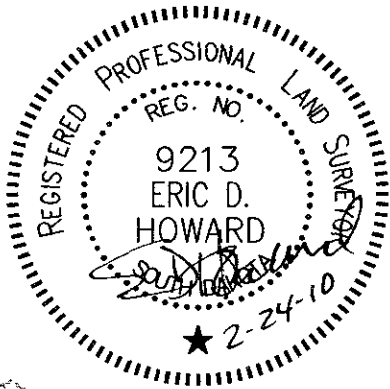
LOCATED IN THE E1/2 OF SECTION 35 AND IN THE W1/2 OF SECTION 36
ALL IN T2N, R7E, BHM,
RAPID CITY, PENNINGTON COUNTY, SOUTH DAKOTA



FEBRUARY 15, 2010



SCALE 1" = 200'



CITY HALL 1903

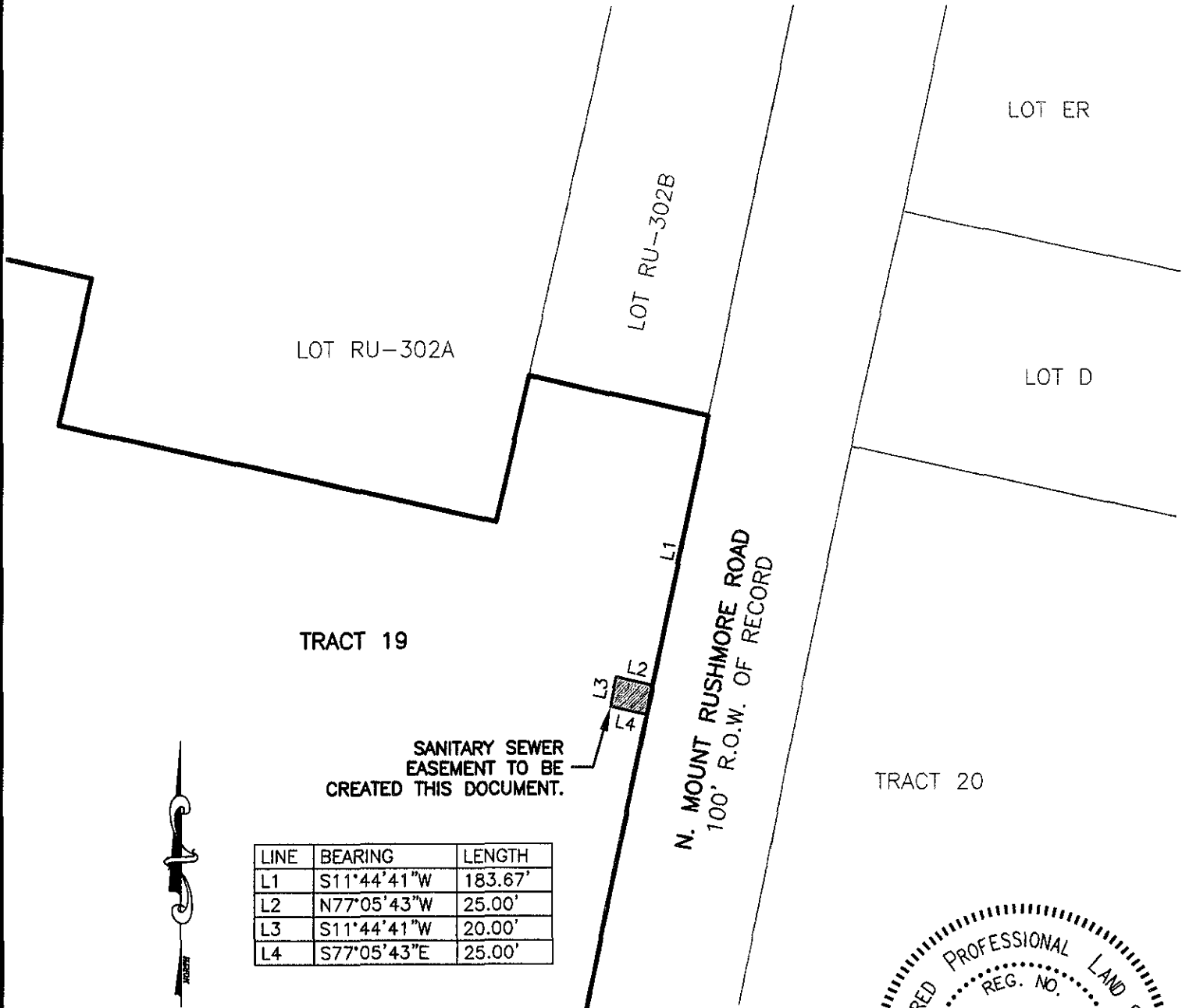
RENNER & ASSOCIATES, LLC.

616 SIXTH ST. * RAPID CITY, SD 57701
PHONE: 605/721-7310 FAX: 605/721-7313
SPEARFISH OFFICE: 605/717-0016

The sidelines of easement are to be lengthened or shortened to conform to right-of-way lines, easement lines and/or property lines.

SANITARY SEWER EASEMENT TRACT 19 OF THE ORIGINAL TOWNSITE OF RAPID CITY OF RAPID CITY GREENWAY TRACT

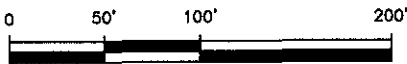
LOCATED IN THE E1/2 OF SECTION 35 AND IN THE W1/2 OF SECTION 36
ALL IN T2N, R7E, BHM,
RAPID CITY, PENNINGTON COUNTY, SOUTH DAKOTA



LINE	BEARING	LENGTH
L1	S11°44'41"W	183.67'
L2	N77°05'43"W	25.00'
L3	S11°44'41"W	20.00'
L4	S77°05'43"E	25.00'

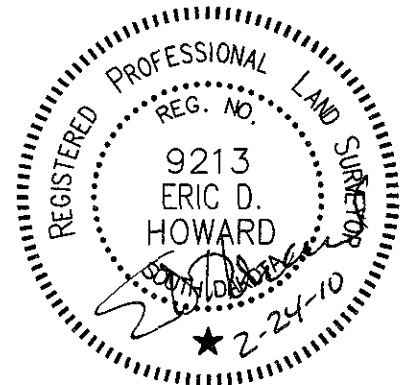


FEBRUARY 13, 2010



SCALE 1" = 100'

The sidelines of easement are to be lengthened or shortened to conform to right-of-way lines and/or property lines.



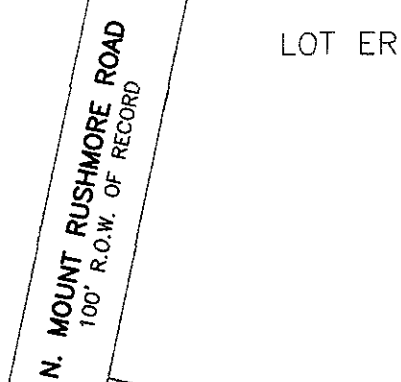
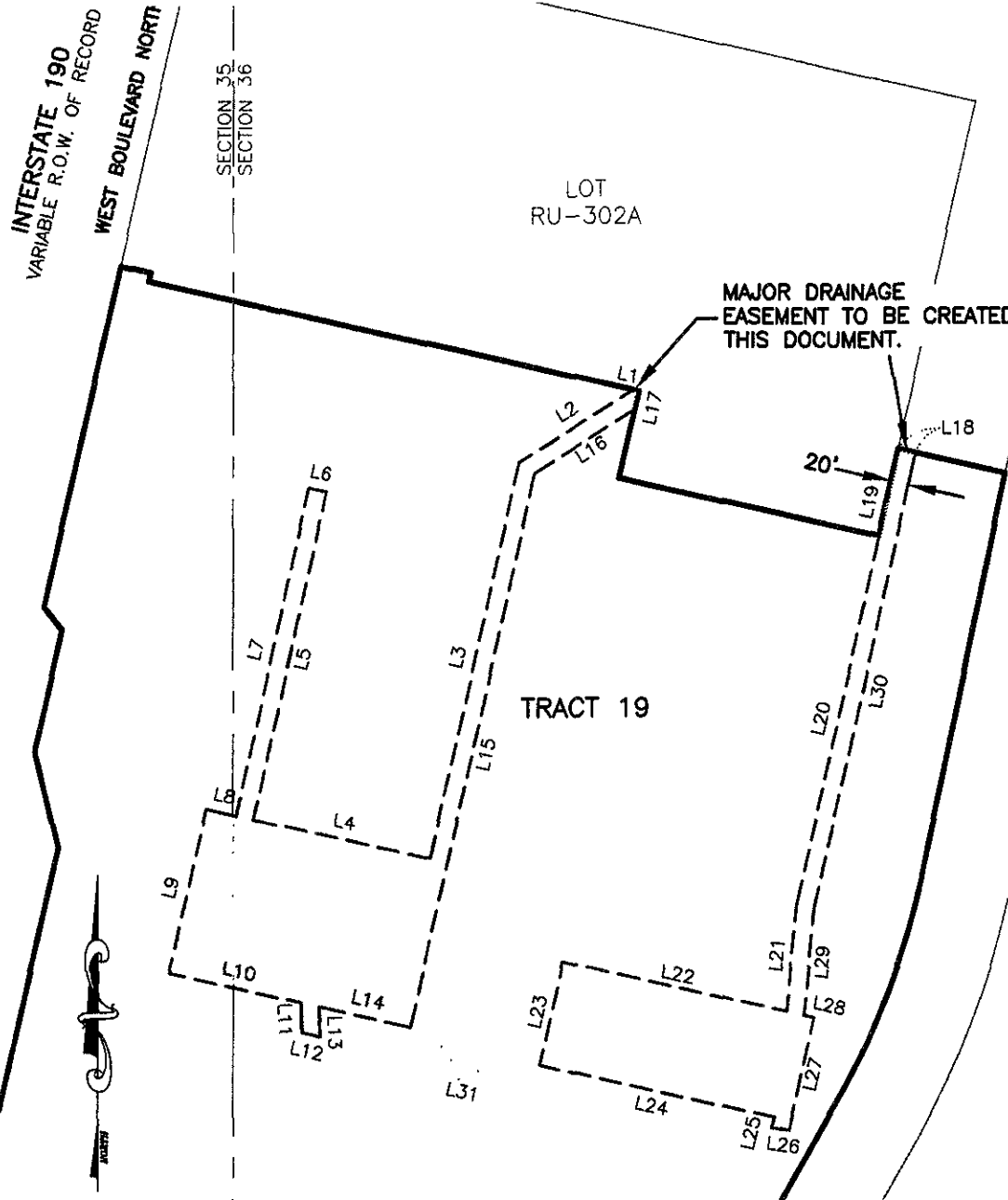
CITY HALL 1903

RENNER & ASSOCIATES, LLC.

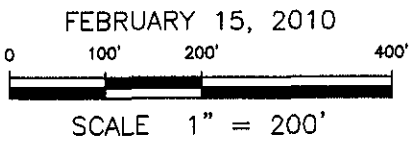
616 SIXTH ST. * RAPID CITY, SD 57701
PHONE: 605/721-7310 FAX: 605/721-7313
SPEARFISH OFFICE: 605/717-0016

MAJOR DRAINAGE EASEMENT TRACT 19 OF THE ORIGINAL TOWNSITE OF RAPID CITY OF RAPID CITY GREENWAY TRACT

LOCATED IN THE E1/2 OF SECTION 35 AND IN THE W1/2 OF SECTION 36
ALL IN T2N, R7E, BHM,
RAPID CITY, PENNINGTON COUNTY, SOUTH DAKOTA



LINE	BEARING	LENGTH
L1	S77°18'13"E	6.93'
L2	N57°45'06"E	151.42'
L3	N12°45'21"E	454.36'
L4	S77°18'14"E	203.85'
L5	S12°42'31"W	375.02'
L6	S77°18'14"E	20.00'
L7	N12°42'31"E	375.02'
L8	S77°18'14"E	34.00'
L9	N12°42'31"E	189.53'
L10	N77°18'14"W	151.42'
L11	N02°16'25"W	33.79'
L12	N76°56'31"W	20.74'
L13	S02°16'25"E	33.93'
L14	N77°18'14"W	105.57'
L15	S12°45'21"W	635.58'
L16	S57°45'06"W	132.97'
L17	S12°41'52"W	21.34'
L18	N77°18'08"W	20.00'
L19	S12°41'52"W	100.00'
L20	S12°41'52"W	423.55'
L21	S05°39'42"W	119.86'
L22	N77°18'14"W	257.65'
L23	S12°41'46"W	118.42'
L24	S77°18'14"E	269.42'
L25	S12°41'46"W	11.89'
L26	S81°48'32"E	20.06'
L27	N12°41'46"E	128.74'
L28	N77°18'14"W	11.62'
L29	N05°39'42"E	121.10'
L30	N12°41'52"E	522.33'
L31	N73°30'29"W	152.32'

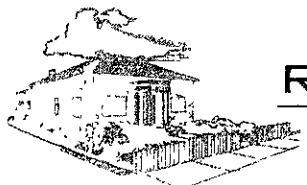


The sidelines of easement are to be lengthened or shortened to conform to right-of-way lines and/or property lines.



RENNER & ASSOCIATES, LLC.

616 SIXTH ST. * RAPID CITY, SD 57701
PHONE: 605/721-7310 FAX: 605/721-7313
SPEARFISH OFFICE: 605/717-0016



CITY HALL 1903