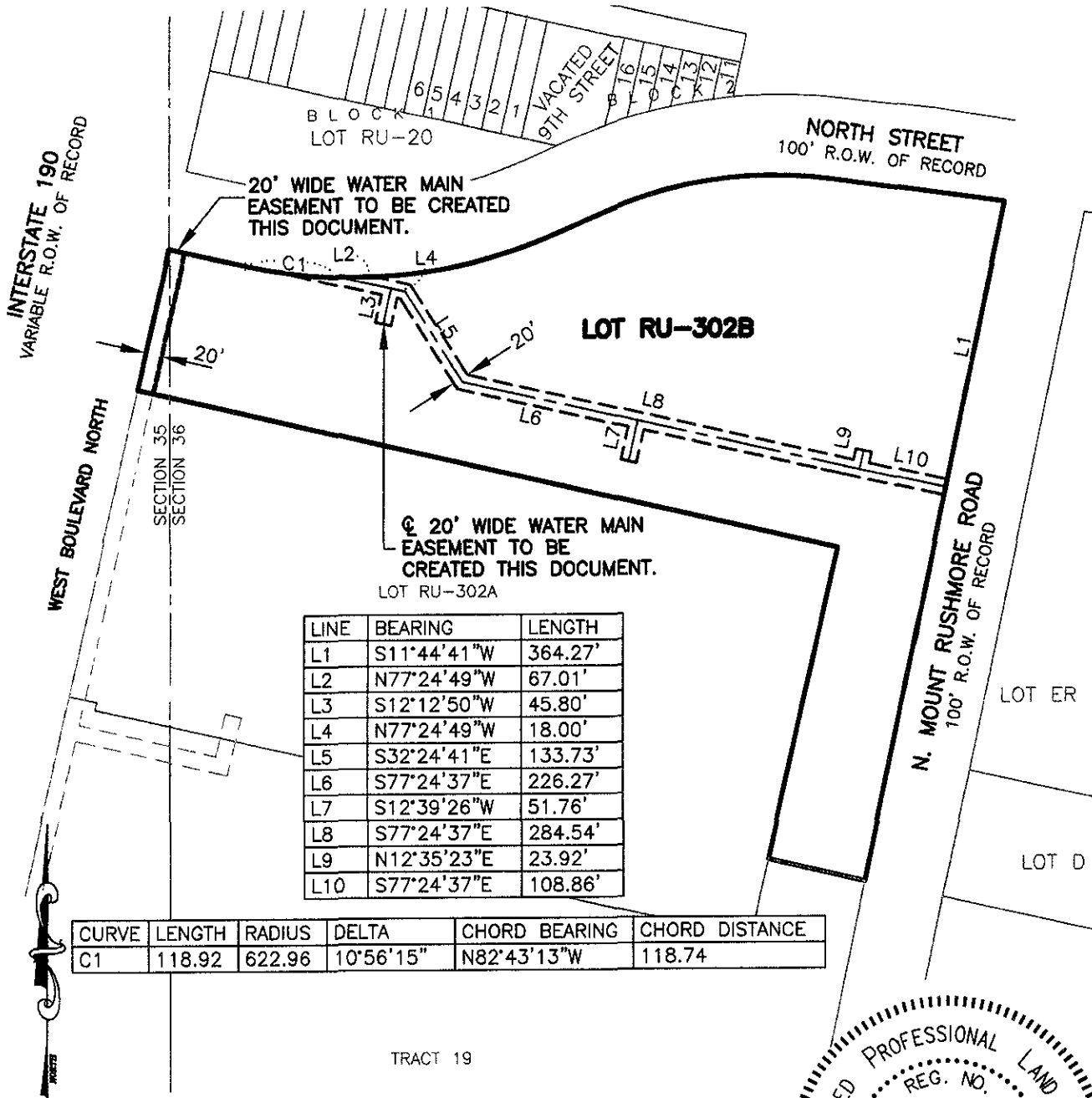


20' WIDE WATER MAIN EASEMENT LOT RU-302B OF THE ORIGINAL TOWNSITE OF RAPID CITY

LOCATED IN THE E1/2 OF SECTION 35 AND IN THE W1/2 OF SECTION 36

ALL IN T2N, R7E, BHM,
RAPID CITY, PENNINGTON COUNTY, SOUTH DAKOTA

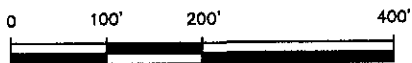


LINE	BEARING	LENGTH
L1	S11°44'41"W	364.27'
L2	N77°24'49"W	67.01'
L3	S12°12'50"W	45.80'
L4	N77°24'49"W	18.00'
L5	S32°24'41"E	133.73'
L6	S77°24'37"E	226.27'
L7	S12°39'26"W	51.76'
L8	S77°24'37"E	284.54'
L9	N12°35'23"E	23.92'
L10	S77°24'37"E	108.86'

CURVE	LENGTH	RADIUS	DELTA	CHORD BEARING	CHORD DISTANCE
C1	118.92	622.96	10°56'15"	N82°43'13"W	118.74

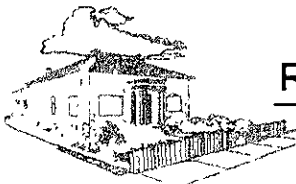
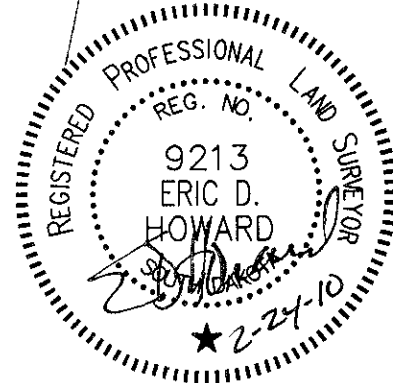
TRACT 19

FEBRUARY 24, 2010



SCALE 1" = 200'

The sidelines of easement are to be lengthened or shortened to conform to right-of-way lines and/or property lines.



CITY HALL 1903

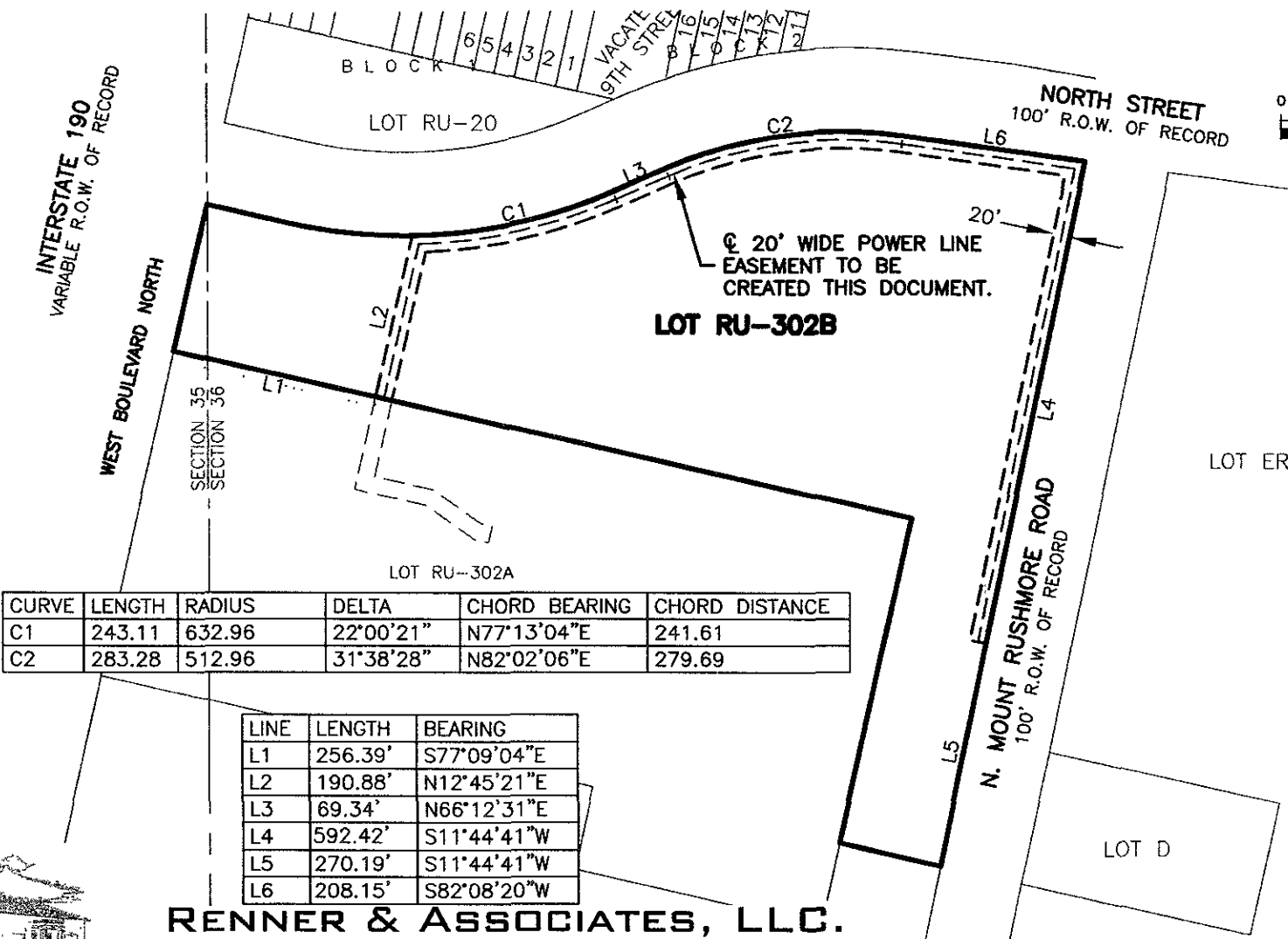
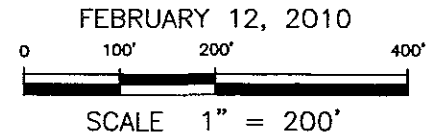
RENNER & ASSOCIATES, LLC.

616 SIXTH ST. * RAPID CITY, SD 57701
PHONE: 605/721-7310 FAX: 605/721-7313
SPEARFISH OFFICE: 605/717-0016

20' WIDE POWER LINE EASEMENT

LOT RU-302B OF THE ORIGINAL TOWNSITE OF RAPID CITY

LOCATED IN THE E1/2 OF SECTION 35 AND IN THE W1/2 OF SECTION 36
 ALL IN T2N, R7E, BHM,
 RAPID CITY, PENNINGTON COUNTY, SOUTH DAKOTA

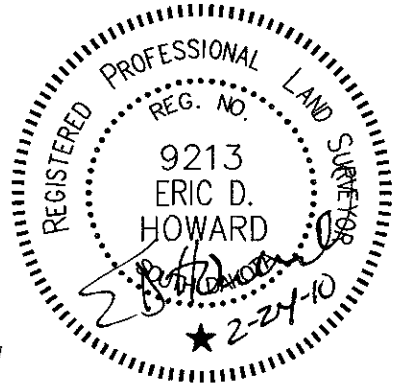


CURVE	LENGTH	RADIUS	DELTA	CHORD BEARING	CHORD DISTANCE
C1	243.11	632.96	22°00'21"	N77°13'04"E	241.61
C2	283.28	512.96	31°38'28"	N82°02'06"E	279.69

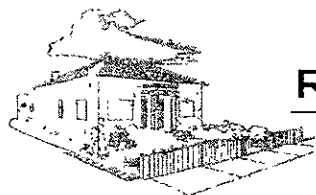
LINE	LENGTH	BEARING
L1	256.39'	S77°09'04"E
L2	190.88'	N12°45'21"E
L3	69.34'	N66°12'31"E
L4	592.42'	S11°44'41"W
L5	270.19'	S11°44'41"W
L6	208.15'	S82°08'20"W

RENNER & ASSOCIATES, LLC.

616 SIXTH ST. * RAPID CITY, SD 57701
 PHONE: 605/721-7310 FAX: 605/721-7313
 SPEARFISH OFFICE: 605/717-0016



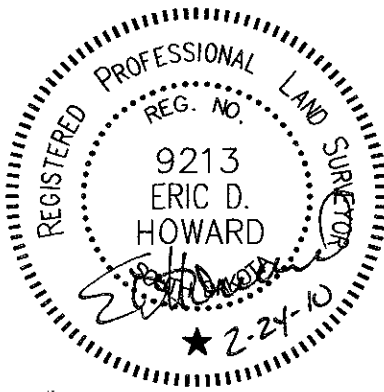
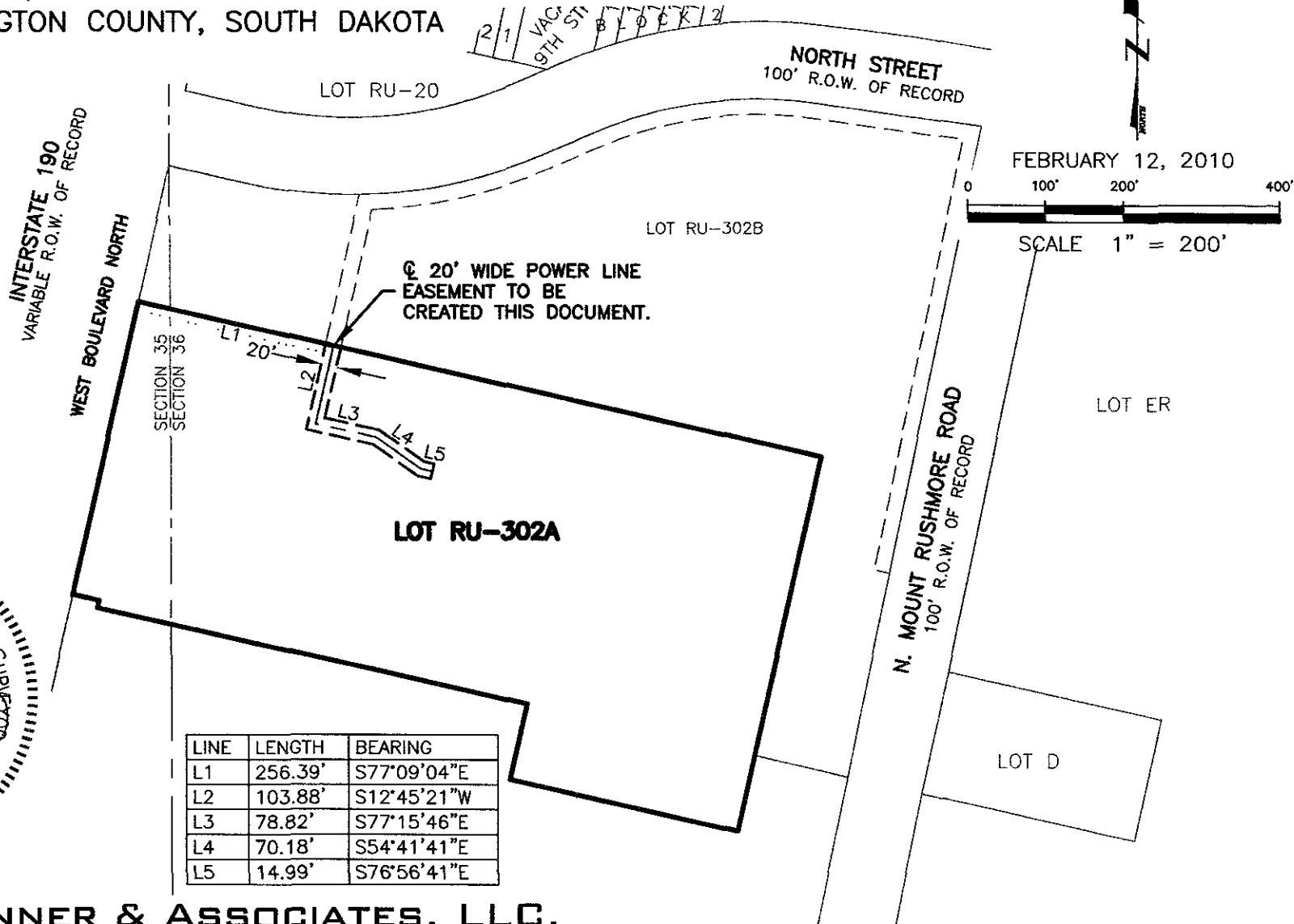
The sidelines of easement are to be lengthened or shortened to conform to right-of-way lines and/or property lines.



CITY HALL 1903

20' WIDE POWER LINE EASEMENT LOT RU-302A OF THE ORIGINAL TOWNSITE OF RAPID CITY

LOCATED IN THE E1/2 OF SECTION 35 AND IN THE W1/2 OF SECTION 36
ALL IN T2N, R7E, BHM,
RAPID CITY, PENNINGTON COUNTY, SOUTH DAKOTA



LINE	LENGTH	BEARING
L1	256.39'	S77°09'04"E
L2	103.88'	S12°45'21"W
L3	78.82'	S77°15'46"E
L4	70.18'	S54°41'41"E
L5	14.99'	S76°56'41"E

RENNER & ASSOCIATES, LLC.

616 SIXTH ST. * RAPID CITY, SD 57701
PHONE: 605/721-7310 FAX: 605/721-7313
SPEARFISH OFFICE: 605/717-0016

The sidelines of easement are to be lengthened or shortened to conform to right-of-way lines and/or property lines.



EXHIBIT 'A'

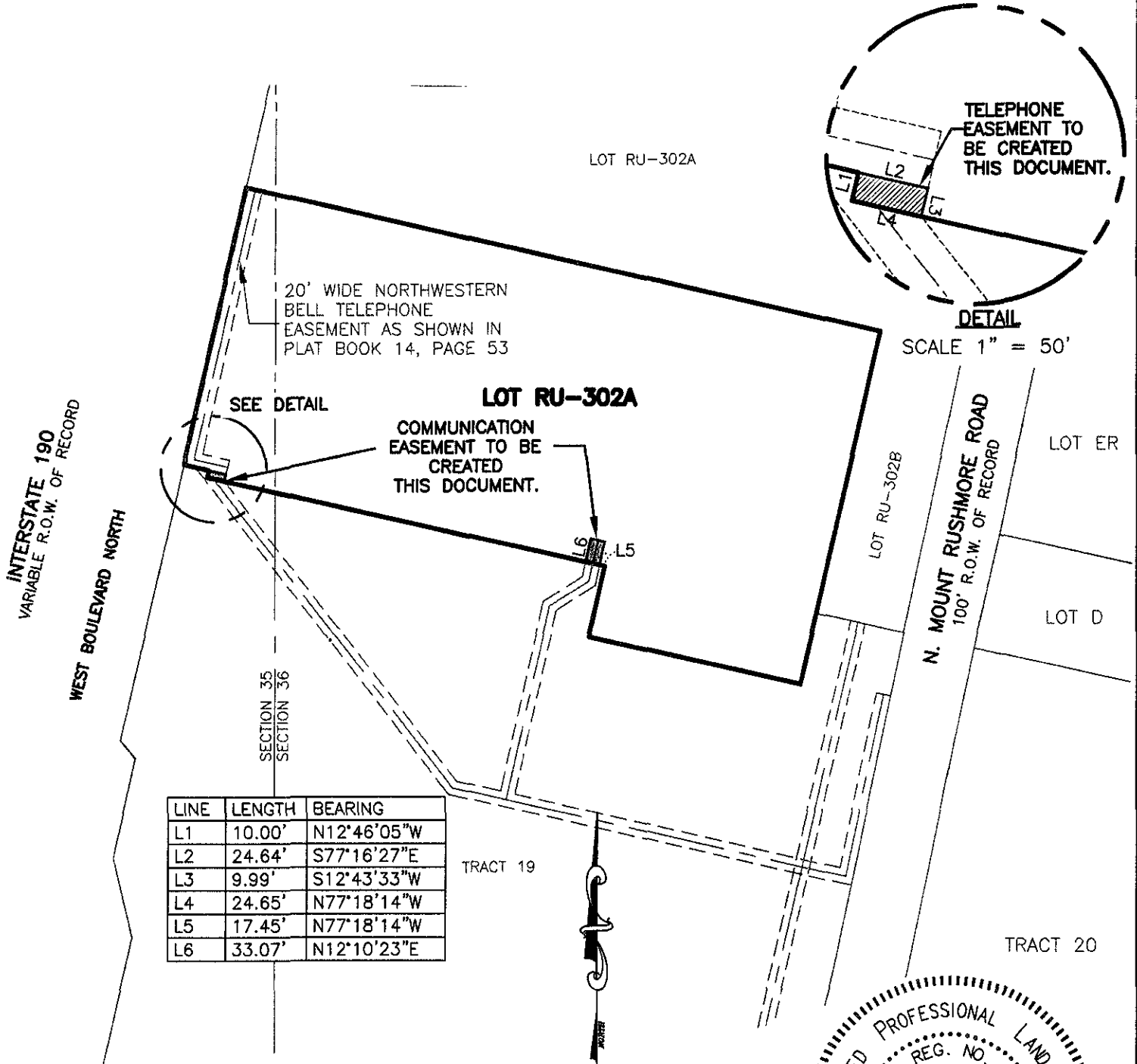
COMMUNICATION EASEMENT

LOT RU-302A OF THE ORIGINAL TOWNSITE OF RAPID CITY

LOCATED IN THE E1/2 OF SECTION 35 AND IN THE W1/2 OF SECTION 36

ALL IN T2N, R7E, BHM,

RAPID CITY, PENNINGTON COUNTY, SOUTH DAKOTA



20' WIDE NORTHWESTERN BELL TELEPHONE EASEMENT AS SHOWN IN PLAT BOOK 14, PAGE 53

TELEPHONE EASEMENT TO BE CREATED THIS DOCUMENT.

DETAIL

SCALE 1" = 50'

LOT RU-302A

COMMUNICATION EASEMENT TO BE CREATED THIS DOCUMENT.

SEE DETAIL

INTERSTATE 190
VARIABLE R.O.W. OF RECORD

WEST BOULEVARD NORTH

SECTION 35
SECTION 36

LOT RU-302B

N. MOUNT RUSHMORE ROAD
100' R.O.W. OF RECORD

LOT ER

LOT D

LINE	LENGTH	BEARING
L1	10.00'	N12°46'05"W
L2	24.64'	S77°16'27"E
L3	9.99'	S12°43'33"W
L4	24.65'	N77°18'14"W
L5	17.45'	N77°18'14"W
L6	33.07'	N12°10'23"E

TRACT 19

TRACT 20

The sidelines of easement are to be lengthened or shortened to conform to right-of-way lines and/or property lines.

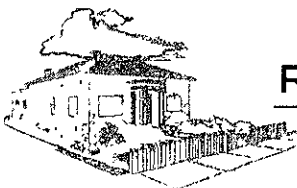
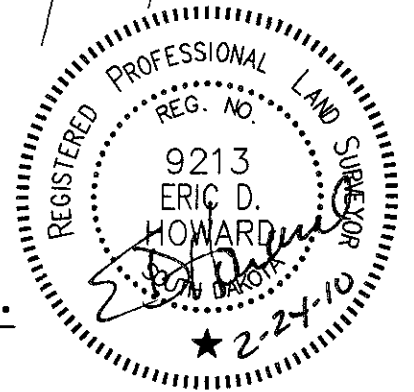
FEBRUARY 17, 2010



SCALE 1" = 200'

RENNER & ASSOCIATES, LLC.

616 SIXTH ST. * RAPID CITY, SD 57701
PHONE: 605/721-7310 FAX: 605/721-7313
SPEARFISH OFFICE: 605/717-0016

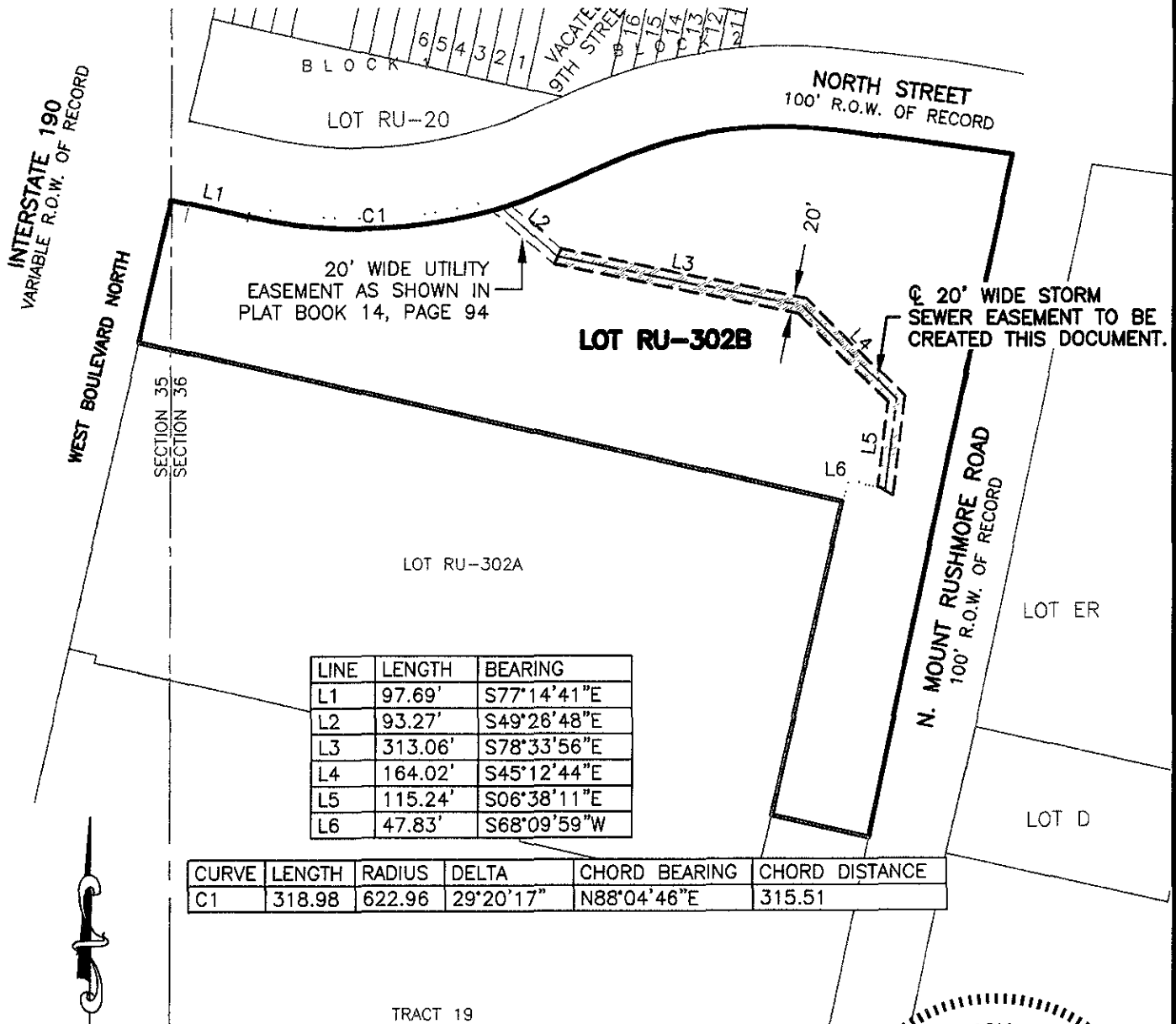


CITY HALL 1903

EXHIBIT 'A'

20' WIDE STORM SEWER EASEMENT LOT RU-302B OF THE ORIGINAL TOWNSITE OF RAPID CITY

LOCATED IN THE E1/2 OF SECTION 35 AND IN THE W1/2 OF SECTION 36
ALL IN T2N, R7E, BHM,
RAPID CITY, PENNINGTON COUNTY, SOUTH DAKOTA

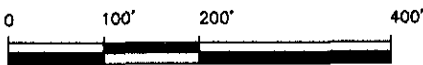


LINE	LENGTH	BEARING
L1	97.69'	S77°14'41"E
L2	93.27'	S49°26'48"E
L3	313.06'	S78°33'56"E
L4	164.02'	S45°12'44"E
L5	115.24'	S06°38'11"E
L6	47.83'	S68°09'59"W

CURVE	LENGTH	RADIUS	DELTA	CHORD BEARING	CHORD DISTANCE
C1	318.98	622.96	29°20'17"	N88°04'46"E	315.51

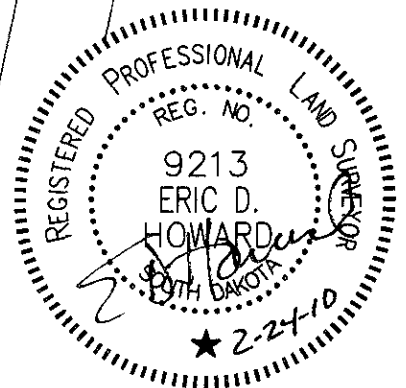


FEBRUARY 13, 2010



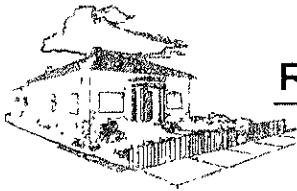
SCALE 1" = 200'

The sidelines of easement are to be lengthened or shortened to conform to right-of-way lines and/or property lines.



RENNER & ASSOCIATES, LLC.

616 SIXTH ST. * RAPID CITY, SD 57701
PHONE: 605/721-7310 FAX: 605/721-7313
SPEARFISH OFFICE: 605/717-0016



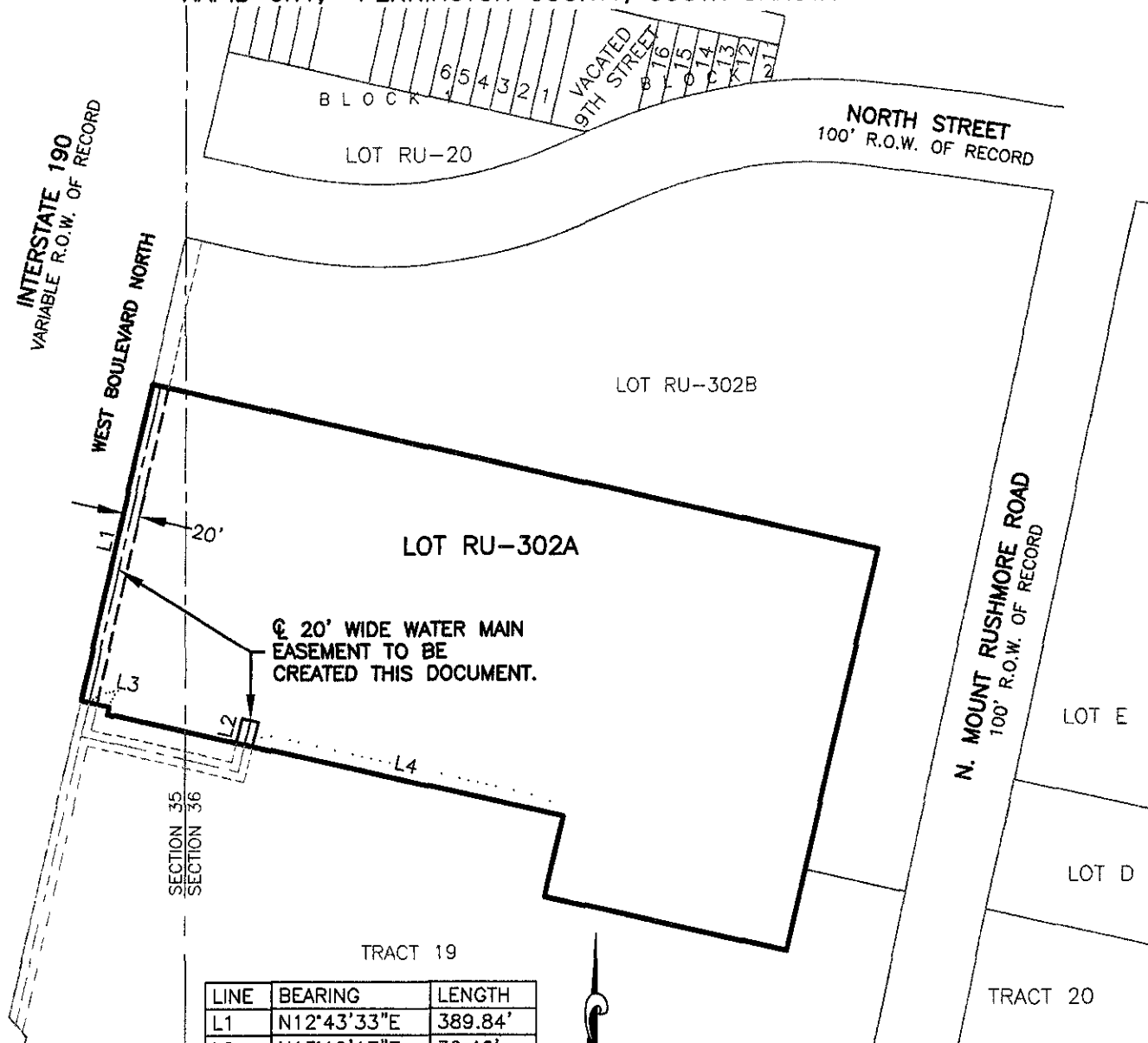
CITY HALL 1903

EXHIBIT 'A'

20' WIDE WATER MAIN EASEMENT

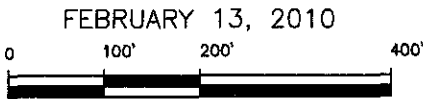
LOT RU-302A OF THE ORIGINAL TOWNSITE OF RAPID CITY

LOCATED IN THE E1/2 OF SECTION 35 AND IN THE W1/2 OF SECTION 36
 ALL IN T2N, R7E, BHM,
 RAPID CITY, PENNINGTON COUNTY, SOUTH DAKOTA

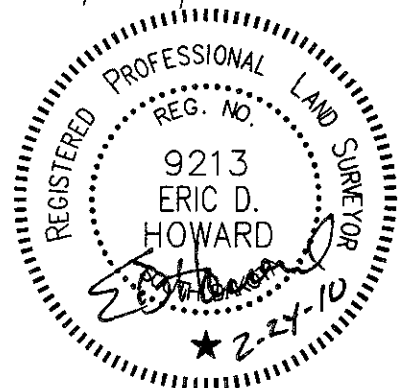


LINE	BEARING	LENGTH
L1	N12°43'33"E	389.84'
L2	N13°10'17"E	30.46'
L3	N77°18'14"W	25.00'
L4	N77°18'14"W	394.76'

The sidelines of easement are to be lengthened or shortened to conform to right-of-way lines and/or property lines.

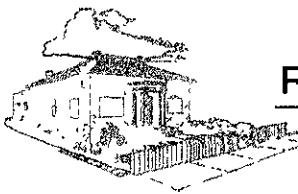


FEBRUARY 13, 2010



RENNER & ASSOCIATES, LLC.

616 SIXTH ST. * RAPID CITY, SD 57701
 PHONE: 605/721-7310 FAX: 605/721-7313
 SPEARFISH OFFICE: 605/717-0016



CITY HALL 1903