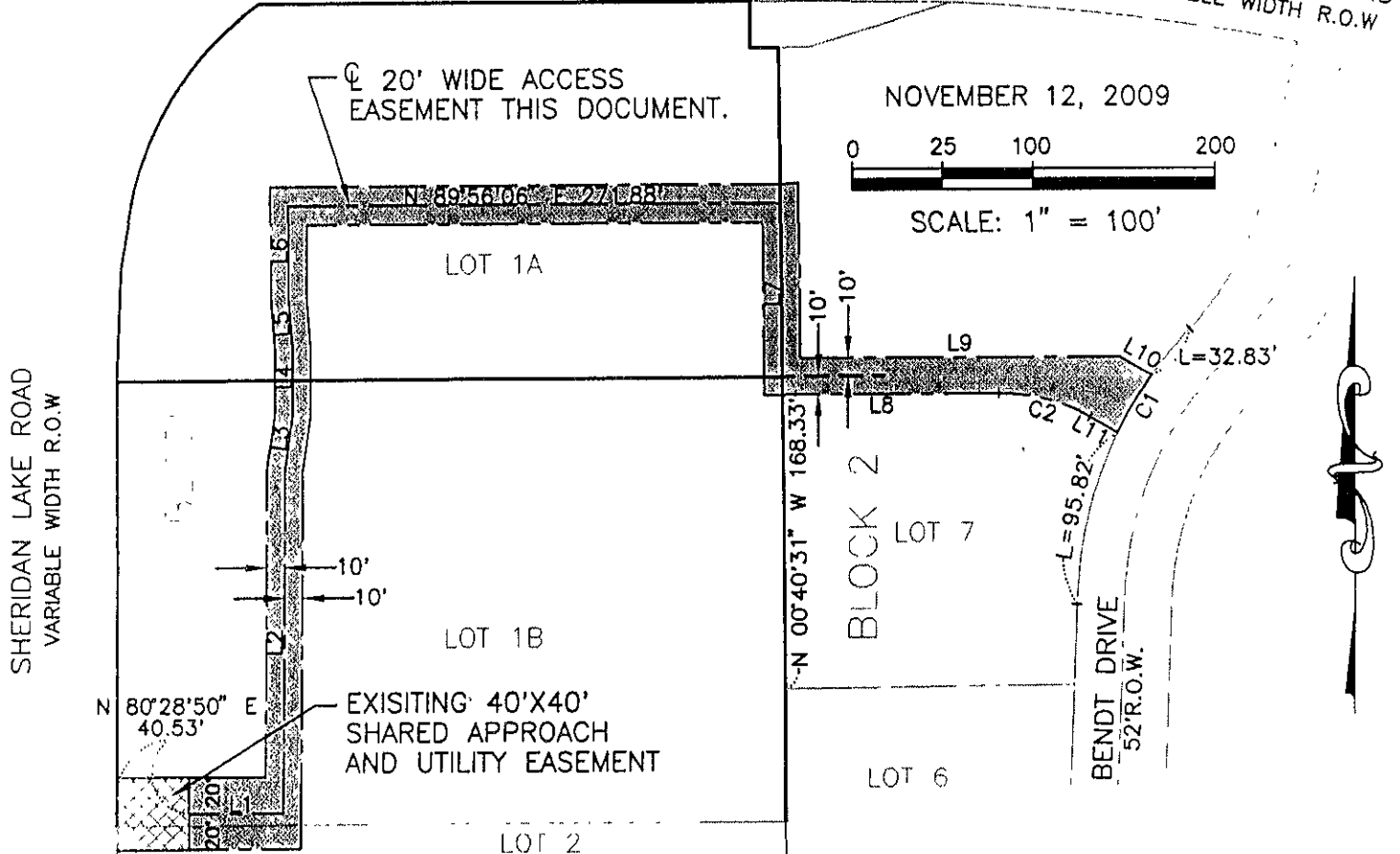


ACCESS EASEMENT LOTS 1A, 1B, AND LOT 2 OF BLOCK 1, AND LOT 7 OF BLOCK 2, STONEY CREEK SOUTH SUBDIVISION

LOCATED IN THE NW¹/₄ OF THE SW¹/₄,
SECTION 22, T1N, R7E, BHM,
RAPID CITY, PENNINGTON COUNTY, SOUTH DAKOTA

CATRON BOULEVARD
VARIABLE WIDTH R.O.W.



NUMBER	DIRECTION	DISTANCE
L1	N 89°54'34" E	52.52'
L2	N 00°00'05" E	183.61'
L3	N 08°38'36" E	30.83'
L4	N 00°04'10" W	36.00'
L5	N 05°01'16" W	28.96'
L6	N 00°04'10" W	47.74'
L7	S 00°40'21" E	92.98'
L8	N 90°00'00" E	129.59'
L9	N 90°00'00" E	176.10'
L10	S 60°05'01" E	20.38'
L11	S 60°05'02" E	17.58'

NOTE: THE SIDELINES OF THE ACCESS EASEMENT SHOWN HEREON ARE TO BE LENGTHENED OR SHORTENED TO CONFORM TO EASEMENT LINES, RIGHT-OF-WAY LINES AND/OR PROPERTY LINES.

MINOR DRAINAGE AND UTILITY EASEMENTS:
8' ON THE INTERIOR SIDE OF ALL LOT LINES
AS STATED IN PREVIOUS PLATS.

FILE COPY

NUMBER	LENGTH	RADIUS	DELTA	CHORD BEARING	CHORD
C1	37.11'	226.00'	09°24'30"	S 30°32'20" W	37.07'
C2	52.21'	100.00'	29°54'58"	S 75°02'31" E	51.62'

