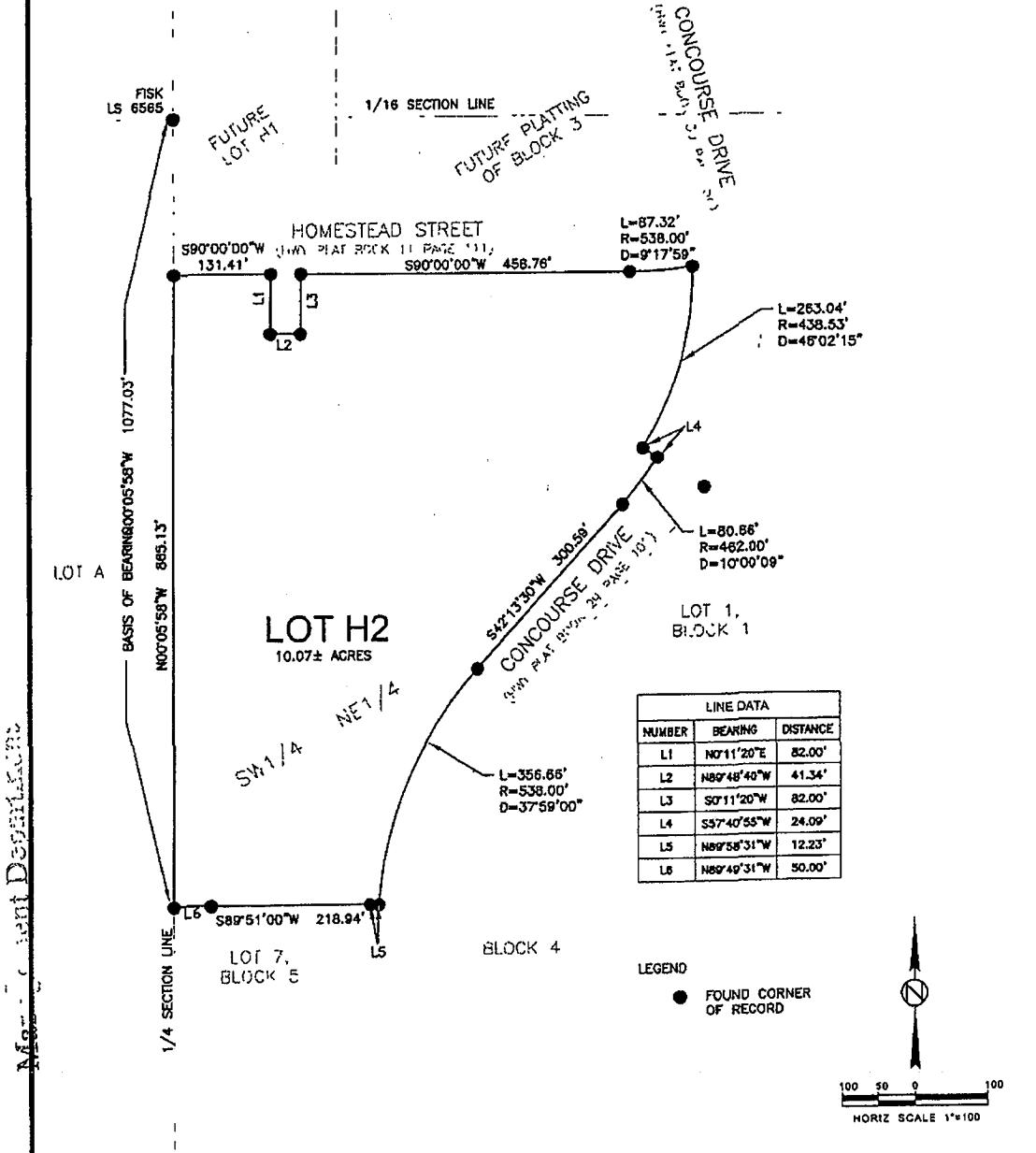


10SR005

### PLAT OF LOT H2

LOCATED IN THE UNPLATTED BALANCE OF SW1/4NE1/4 OF SECTION 4, T.1N., R.8E., B.H.M., PENNINGTON COUNTY, SOUTH DAKOTA



PREPARED BY FOURFRONT DESIGN INC. DATE 1-22-10  
 CHECKED BY RLD DATE 1-22-10

#### SURVEYOR'S CERTIFICATE

I, RANDY L. DEIBERT, REGISTERED LAND SURVEYOR, IN AND FOR THE STATE OF SOUTH DAKOTA, DO HEREBY CERTIFY THAT AS ORDERED BY THE CITY OF RAPID CITY & RAPID CITY ECONOMIC DEVELOPMENT CORPORATION THE PARCEL OF LAND AS SHOWN ON THIS PLAT HAS BEEN SURVEYED AT MY DIRECTION AND UNDER MY CONTROL, AND SUCH TRACT OF LAND SHALL BE HEREAFTER KNOWN BY THE LOT NUMBER DESIGNATED HEREIN, THE LOCATION AND DIMENSIONS OF THE TRACT ARE SHOWN ON THIS PLAT.

IN WITNESS WHEREOF, I HAVE SET MY HAND AND SEAL THIS \_\_\_\_\_ DAY OF \_\_\_\_\_ A.D., 20\_\_\_\_ REGISTERED LAND SURVEYOR  
 REGISTRATION NO. 5086

PREPARED BY: FOURFRONT DESIGN INC  
 517 7TH STREET RAPID CITY SD 57701  
 TELEPHONE (605)342-9470

#### OFFICE OF REGISTER OF DEEDS

STATE OF SOUTH DAKOTA  
 COUNTY OF BUTTE  
 FILED FOR RECORD THE \_\_\_\_\_ DAY OF \_\_\_\_\_ A.D., 20\_\_\_\_ AT \_\_\_\_\_ M., AND RECORDED  
 IN BOOKS OF PLATS \_\_\_\_\_ ON PAGE \_\_\_\_\_ THEREIN.

REGISTER OF DEEDS BY \_\_\_\_\_ DEPUTY

Map - 10 SR 005