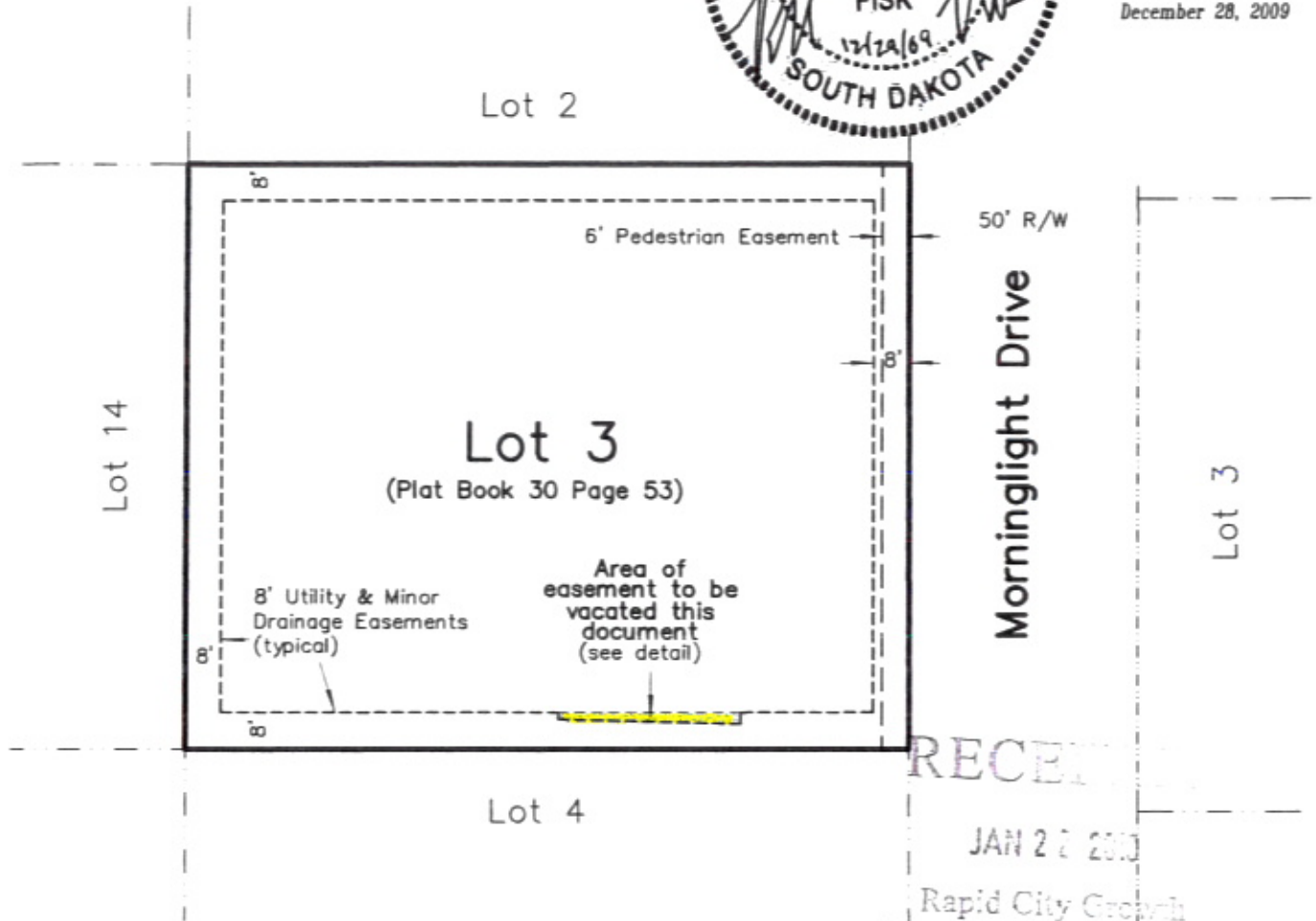
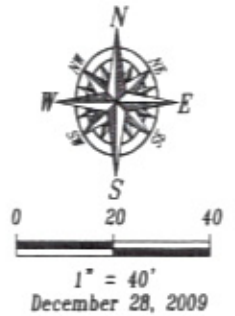


EXHIBIT A

10VE002

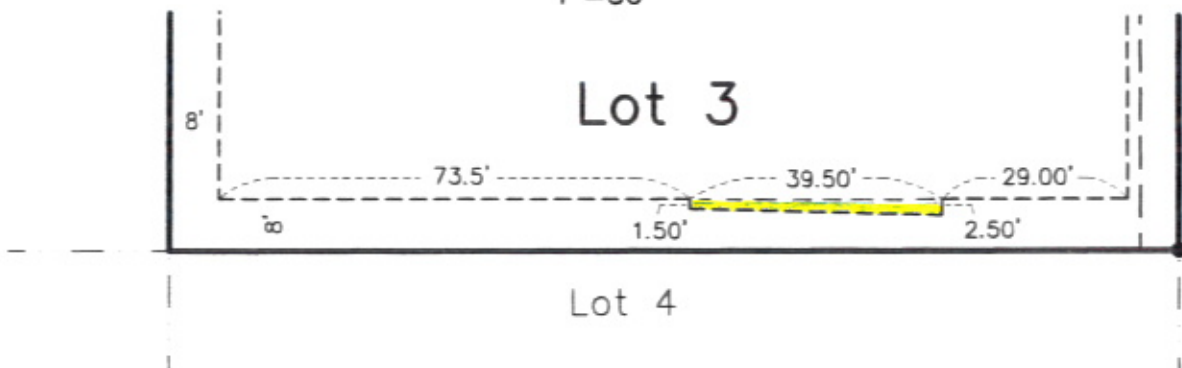
EASEMENT VACATION

located in Lot 3 of Block 17,
Valley Heights Estates Subdivision
Pennington County, South Dakota



RECEIVED
JAN 27 2010
Rapid City Growth
Management Department

DETAIL 1"=30'

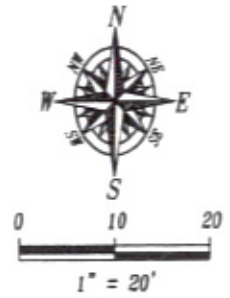
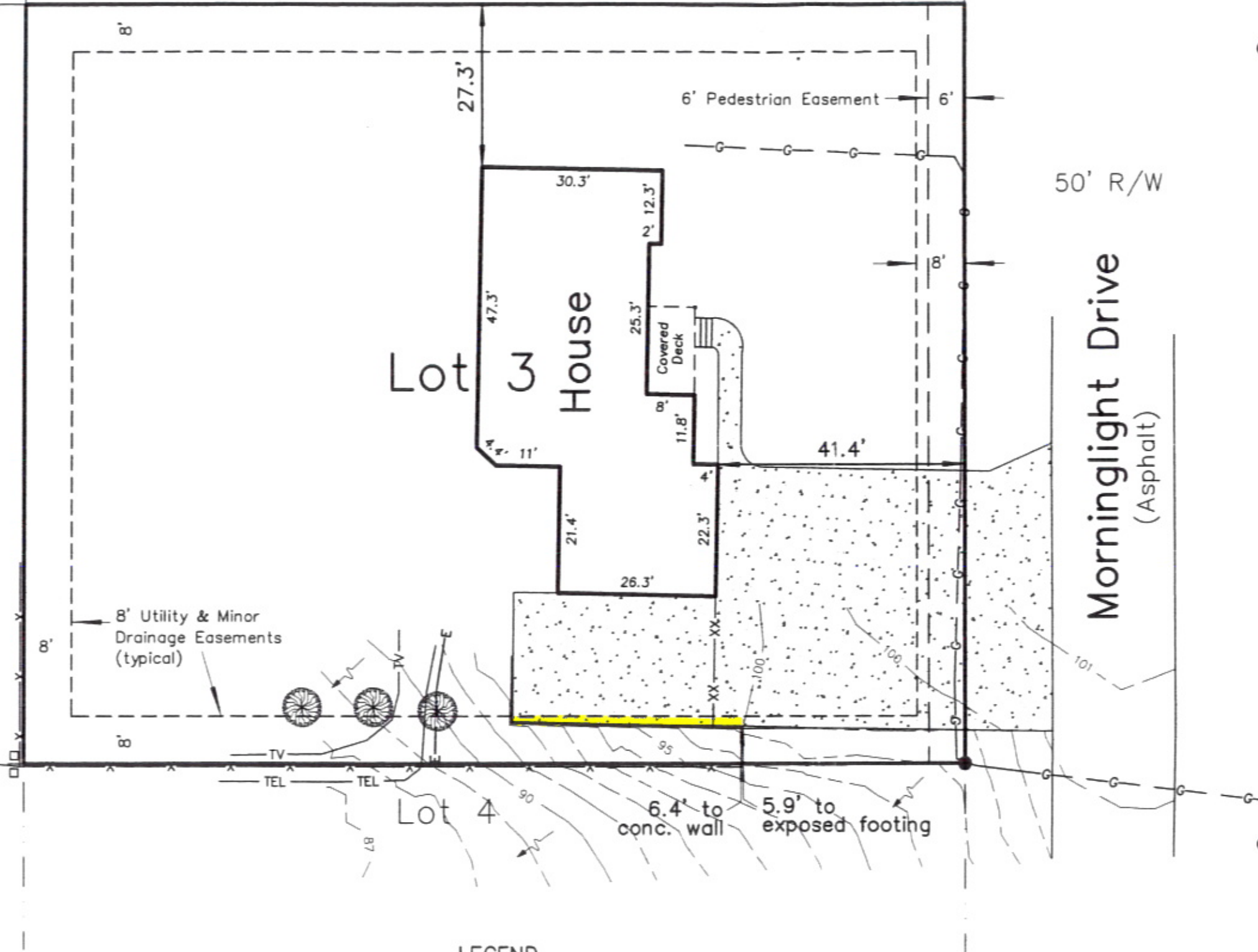


Lot 14

Lot 2

Lot 3
House

Lot 4



December 28, 2009
Assumed Datum
Basis of Bearings
South Line of
Subject Lot
as platted

RECEIVED
JAN 21 2010
Rapid City Growth
Management Dept.

Morninglight Drive
(Asphalt)



LEGEND

- = Telecommunications Pedestal
- xx — = Fence Line (chain link)
- X — = Fence Line (wood privacy fence)
- E — = Underground Electric
- T — = Underground Telephone
- TV — = Underground Television
- G — = Natural Gas Line
- = Found Survey Monument LS 4224
- △ = Control Point
- ⊙ = Tree (Deciduous)

SURVEYOR'S NOTES

Utilities shown are from visual inspection, sketches provided by individual service providers and Utility Locates performed by South Dakota One Call, Ticket Number 093 430 006. The actual location of utilities and service lines may vary from the information shown hereon. We assume no liability for utilities and services that are not marked or are incorrectly defined by utility locators.

Fisk Land Surveying & Consulting, Inc.
1022 Main Street (P.O. Box 8194)
Rapid City, South Dakota 57709
(605) 346-1538
(605) 341-1112 (fx)

Easement Vacation Exhibit
Lot 3 Block 17, Valley Heights Estates Subdivision
Sections 1 and 12, T1n, R8E, BHM.,
Pennington County, South Dakota

Surveyed by:
ML, BL
Date
12/3/09
Drawn by:
BL, RWF
Checked by:
JF

Revisions

Vacation Exhibit

1
of
1

Project No.
09-12-08