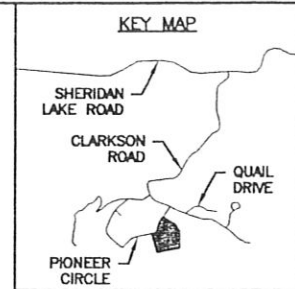


09EX139



PRELIMINARY FOR REVIEW ONLY

CITY OF RAPID CITY
GROWTH MANAGEMENT DEPT.
DEVELOPMENT SERVICES

Plans are reviewed for general conformance with applicable governmental regulations, stipulations, design criteria and engineering standards. The City of Rapid City does not certify the suitability, adequacy or completeness of the plans or design, which are the responsibility of the engineer of record. All necessary permits shall be obtained prior to construction of the proposed public improvements.

Engineering Reviewer: _____ Date: _____

COMMENTS

Internal Job No: 09-0554 Designed By: HS Drawn By: PMW

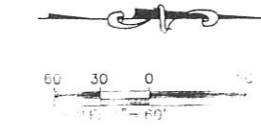
Surveyed By: HEALD LAND SURVEYING Survey Date: 12/1995

Submittals

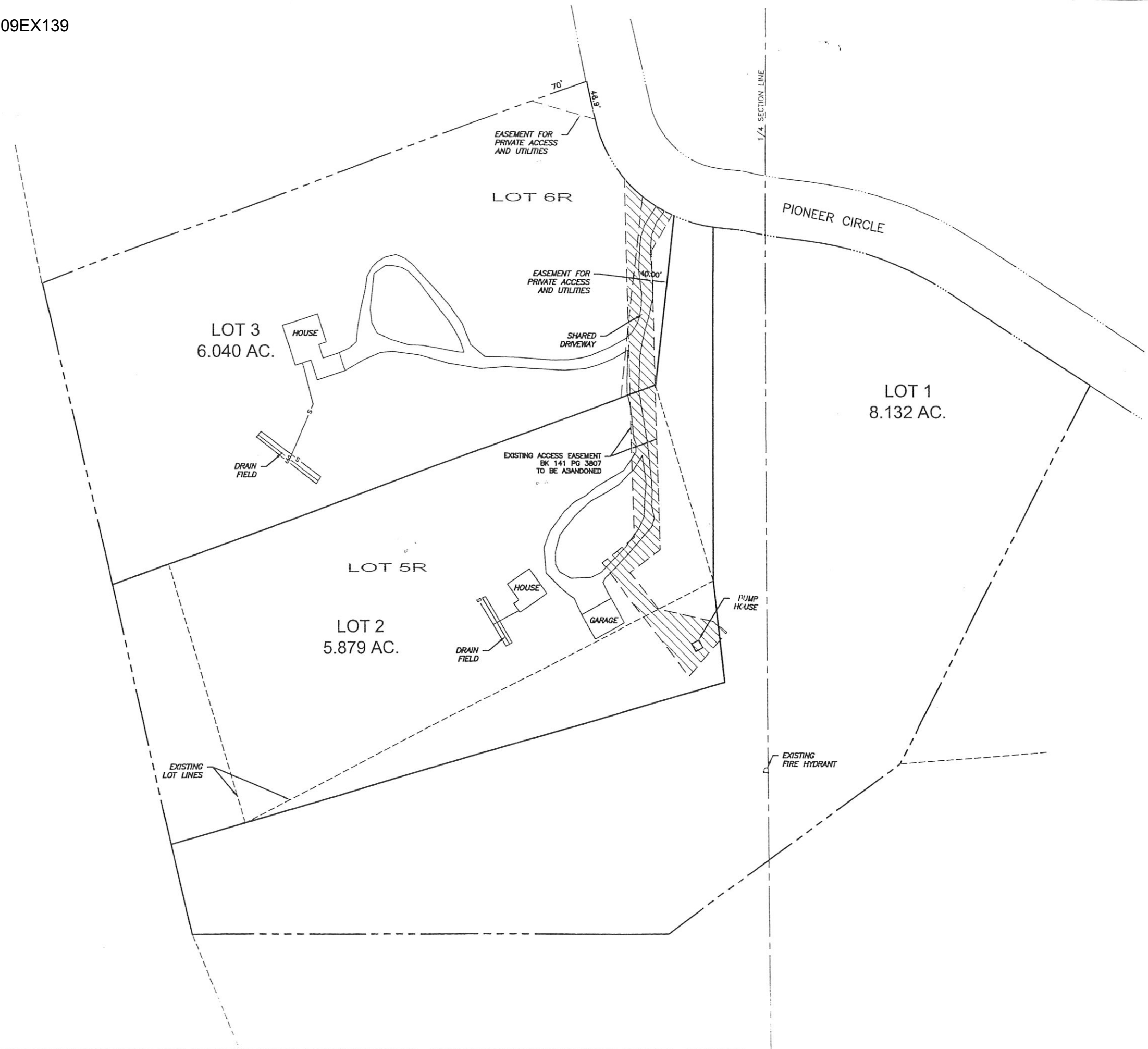
Revisions

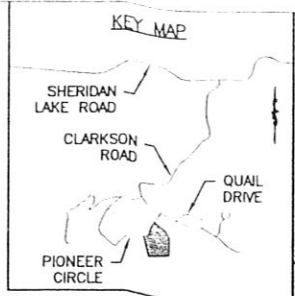
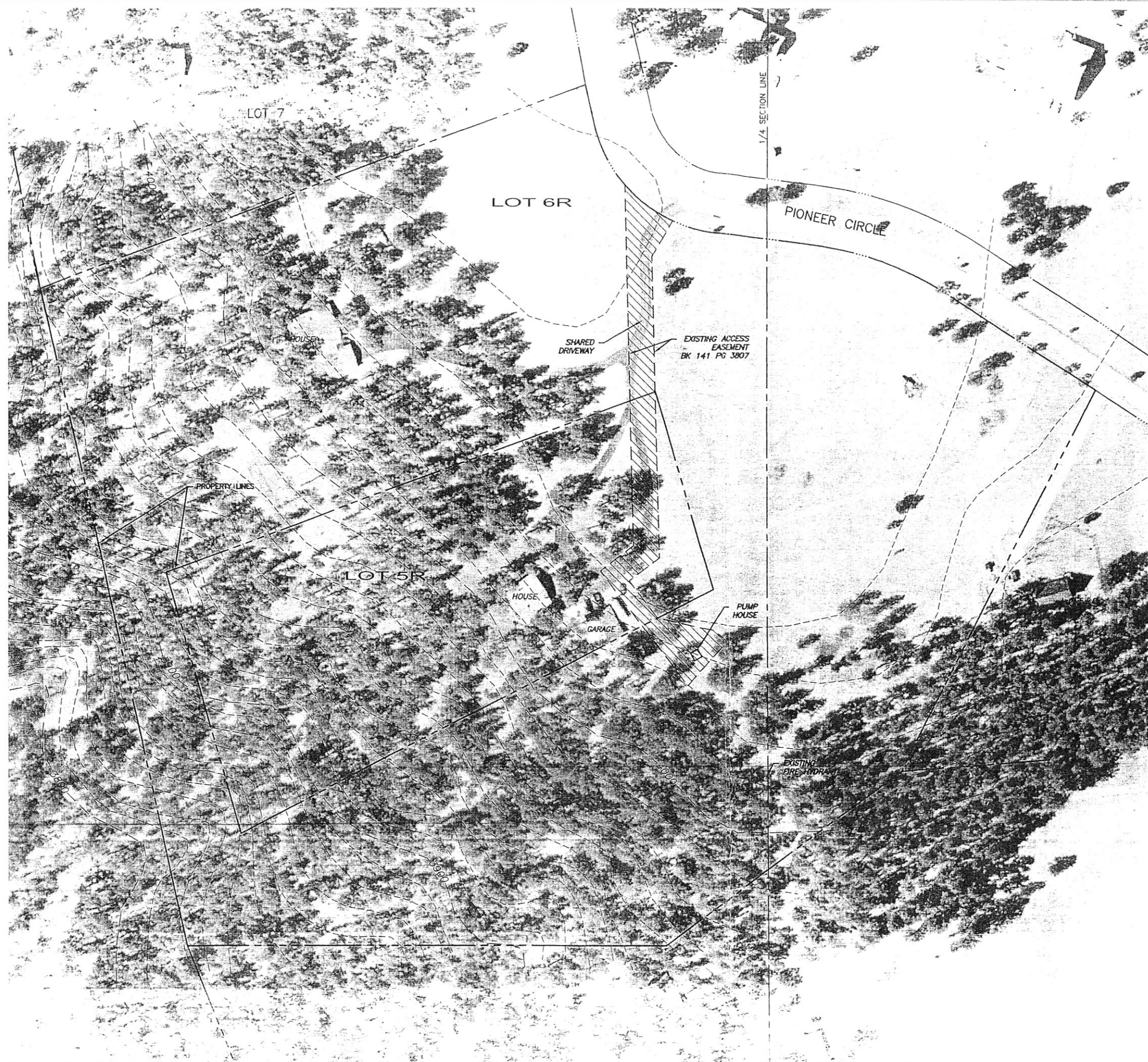
RECEIVED
DEC 11 2009
Rapid City Growth
Management Department

LOTS 1, 2 & 3 OF
LOT 6R OF BLOCK 1 OF
SPRING CANYON ESTATES



X:\9560_9560\354\Drawings\PLATS\0564_LAYOUT PLAT 1.dwg_LAYOUT PLAT 1 12/22/2009 3:33:32 PM





PRELIMINARY FOR REVIEW ONLY

CITY OF RAPID CITY
GROWTH MANAGEMENT DEPT.
DEVELOPMENT SERVICES

Plans are reviewed for general conformance with applicable governmental regulations, stipulations, design criteria and engineering standards. The City of Rapid City does not certify the suitability, adequacy or completeness of the plans or design, which are the responsibility of the engineer of record. All necessary permits shall be obtained prior to construction of the proposed public improvements.

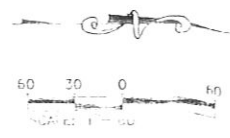
Engineering Reviewer: _____ Date: _____
COMMENTS

Internal Job No: 09-0554
Designed By: HS
Drawn By: PMW
Surveyed By: HEALD LAND SURVEYING
Survey Date: 12/1995
Submittals:

Revisions

LOTS 1, 2 & 3 OF
LOT 6R OF BLOCK 1 OF
SPRING CANYON ESTATES

RECEIVED
DEC 11 2009
Rapid City Growth
Management Department



LAYOUT PL
EXISTING CONDITIONS

C:\550-399554\Drawings\PLATS\0554 condition exhibits.dwg, existing, 11/17/2009 3:14:25 PM