

# CITY OF RAPID CITY



## Engineering Services

300 Sixth Street  
Rapid City, SD 57701-5035

Telephone: (605) 394-4154

FAX: (605) 394-6636

E-mail: [dale.tech@rcgov.org](mailto:dale.tech@rcgov.org)

October 19, 2009

Public Works Committee/Common Council

RE: Request Authorization to Seek Proposals for Engineering Services for  
Levee Certification Project DR09-1840 CIP # 50756

The City's three levees at Sioux Park, Omaha Street, and Saint Patrick Street are shown on the current Flood Insurance Maps (FIRM). The Federal Emergency Management Agency (FEMA) is in the process of producing a new Digital Flood Insurance Map (DFIRM) for Pennington County, South Dakota.

For FEMA to continue to accredit the identified levees with providing protection from the base flood, the levees must meet the requirements of the Code of Federal Regulations, Title 44, Section 65.10, entitled "Mapping of Areas Protected by Levee Systems".

Staff proposes to hire a Consultant to provide the data defined and outlined within the regulation to maintain the levees certification and thereby their designation on the DFIRM.

The project is funded from the Drainage fund. The project budget is \$50,000. Staff proposes to bid the project in 2010.

Dale Tech, PE  
City Engineer

Cc: Robert Ellis, Public Works Director



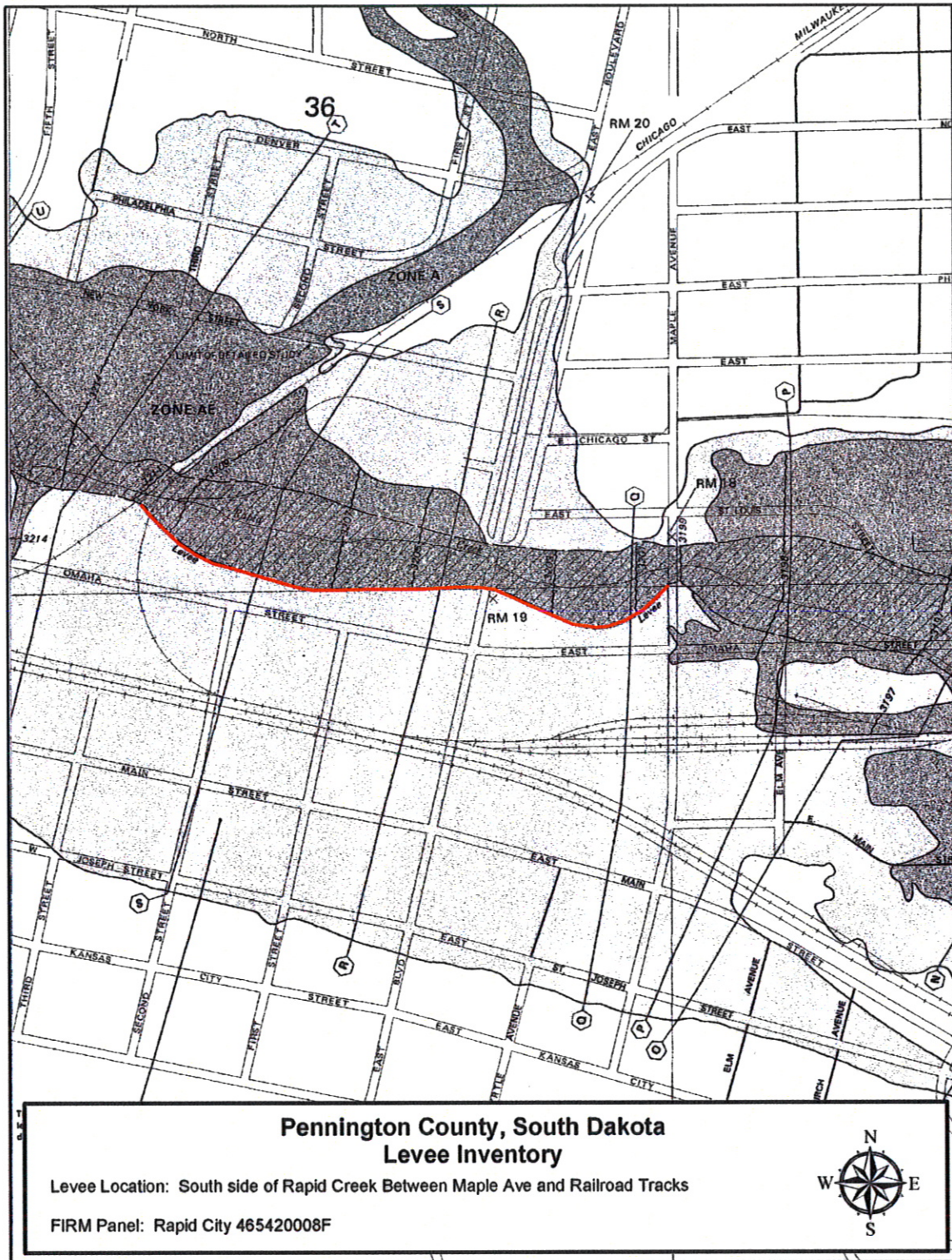


Figure 1: Railroad-Maple Street Levee







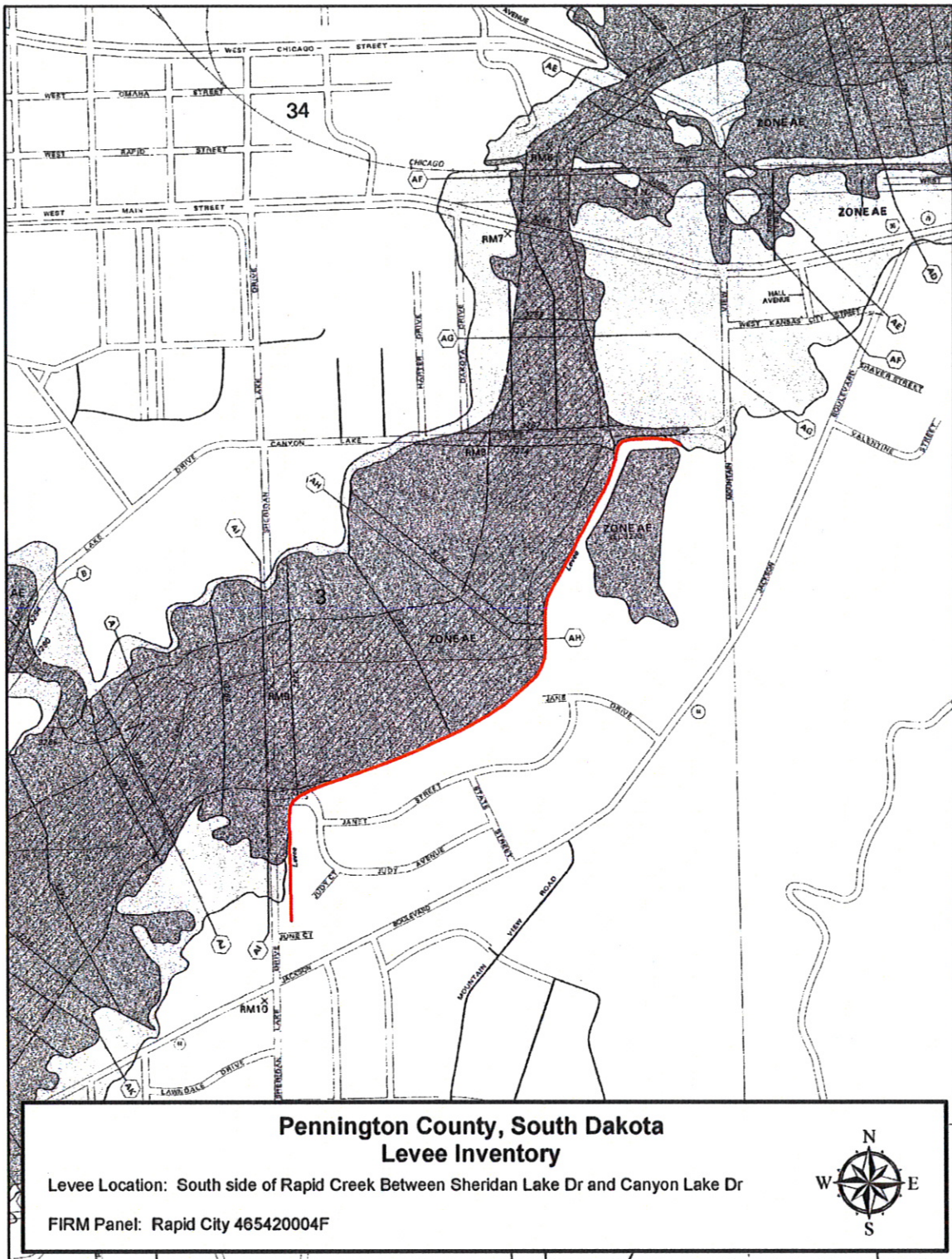


Figure 1: Sheridan Lake Drive Levee