

**CITY OF RAPID CITY
CONSTRUCTION CHANGE ORDER**

PROJECT NAME: ELK VALE LOW LEVEL RESERVOIR

PROJECT NO: W07-1638

CONTRACTOR: NATGUN CORPORATION

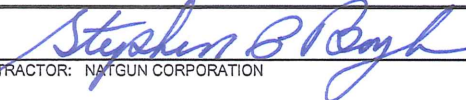
ORIGINAL CONTRACT AMOUNT: \$5,931,271.20

CHANGE ORDER NO.: 4

DATE: August 17, 2009

ITEM	DESCRIPTION	UNIT	CONTRACT QUANTITY	UNIT PRICE	EXTENDED PRICE	INSTALLED QUANTITY	INSTALLED PRICE	INCREASE/ (DECREASE)
1	Elk Vale Landscaping Plan (PCO #26)	LS	1	\$17,849.86	\$17,849.86			\$17,849.86
2	Signal Hill Road Improvements (PCO #29)	LS	1	\$19,925.04	\$19,925.04			\$19,925.04
Total								\$37,774.90

C.C.O. HISTORY INCREASE/(DECREASE)	PRIOR ADJUSTED CONTRACT PRICE :	\$5,718,601.34
CCO #1 (\$65,149.60)	NET INCREASE/(DECREASE):	\$37,774.90
CCO #2 \$2,110.22		
CCO #3 (\$149,630.48)	ADJUSTED CONTRACT PRICE:	\$5,756,376.24
PRIOR TOTAL (\$212,669.86)	CHANGE TO DATE:	(\$174,894.96)

	8/25/09
CONTRACTOR: NATGUN CORPORATION	DATE
PROJECT MANAGER: DAN COON	DATE
CITY ENGINEER: DALE TECH	DATE
MAYOR: ALAN HANKS	DATE
FINANCE: JAMES PRESTON	DATE
SIGNAL HILL SUBSTANTIAL COMPLETION TIME CHANGE +/-: 0	SIGNAL HILL SUBSTANTIAL COMPLETION: June 26, 2009
SUBSTANTIAL COMPLETION TIME CHANGE +/-: 0	PROJECT SUBSTANTIAL COMPLETION: September 3, 2009
READY FOR FINAL PAYMENT TIME CHANGE +/-: 0	READY FOR FINAL PAYMENT: October 19, 2009

City Staff recommends approval of this Change Order #4 to Natgun Corporation for an increase of \$37,774.90 based on unit pricing with the following appropriation:

Initial Funding	\$5,931,271.20
Fund Type	Water Enterprise
Department	0934
Line Item	4381
Fund	0602
CCO #1	(\$65,149.60)
CCO #2	\$2,110.22
CCO#3	(\$149,630.48)
CCO#4	\$37,774.90
Adjusted Funding	\$5,756,376.24

CITY OF RAPID CITY
CONSTRUCTION CHANGE ORDER

PROJECT NAME: ELK VALE LOW LEVEL RESERVOIR

PROJECT NO. W07-1638

CONTRACTOR: NATGUN CORPORATION

ORIGINAL CONTRACT AMOUNT: \$5,931,271.20

CHANGE ORDER NO.: 4

DATE: August 17, 2009

ITEM	DESCRIPTION	REASON FOR CHANGE
1	Elk Vale Landscaping Plan (PCO #26)	Additional cost to add landscaping measures at the Elk Vale site as required by a stipulation of approval of the associated Fence Height Exception.
2	Signal Hill Road Improvements (PCO #29)	Additional cost for paving and parking improvements at the Signal Hill site as required by the Planning Commission during the SDCL 11-6-19 Review.

PREPARED BY:


Laith Hintz, AE2S

DATE:

8/17/09

PLANT SCHEDULE

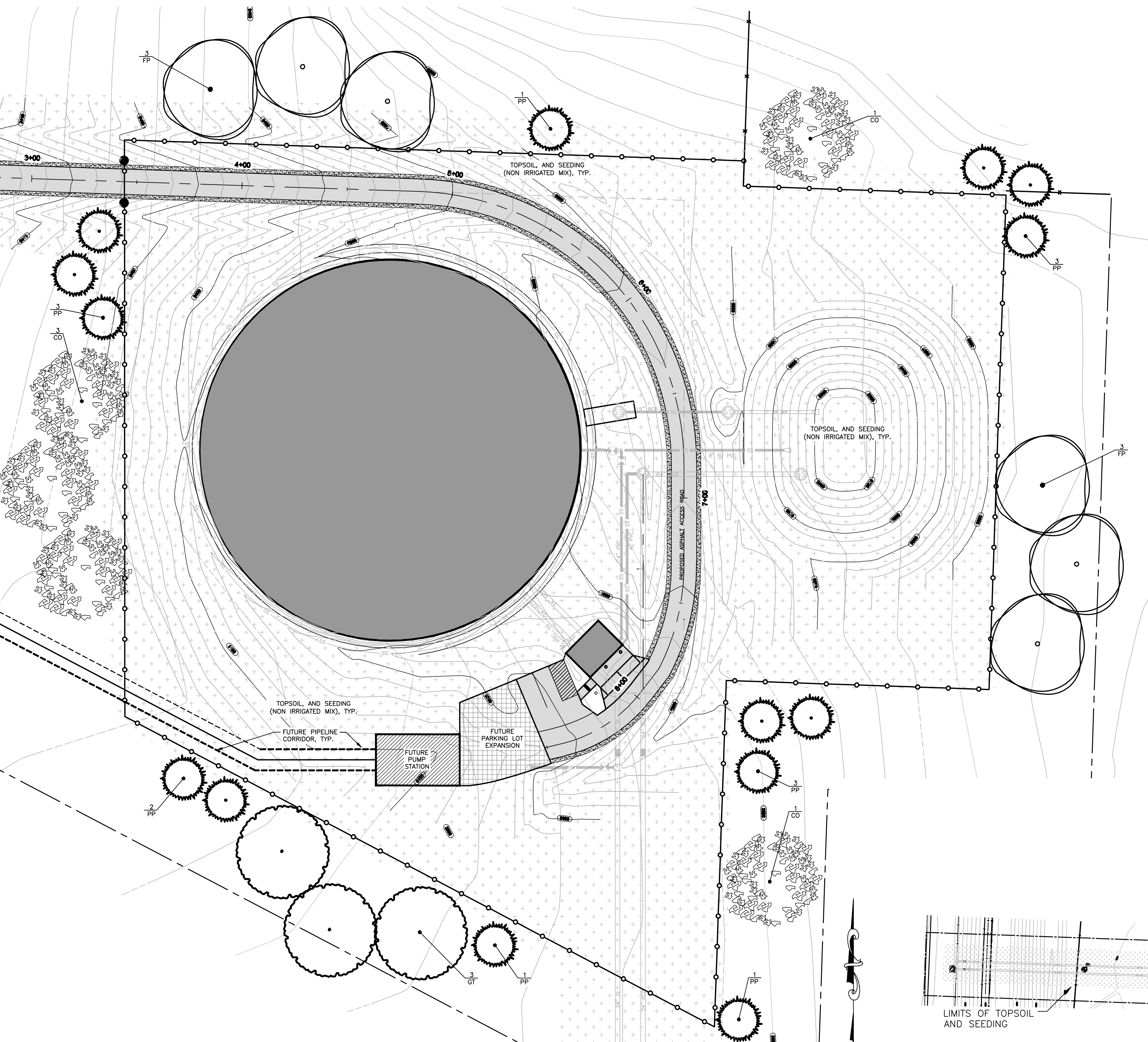
SYMBOL	QNTY	COMMON NAME	BOTANICAL NAME	SIZE
CONIFEROUS TREES				
PP	14	PONDEROSA PINE	Pinus ponderosa	6-7 foot
DECIDUOUS TREES				
CO	5	COMMON HACKBERRY	Celtis occidentalis	2" caliper
GT	3	SHADEMASTER HONEYLOCUST	Gleditsia triacanthos var. inermis 'Shademaster'	2" caliper
FP	6	PATMORE GREEN ASH	Fraxinus pennsylvanica 'Patmore'	2" caliper
SEEDING				
+	4,600	NON-IRRIGATED SEED MIX	PER CITY SPECIFICATIONS	

GENERAL NOTES

1. THE CONTRACTOR SHALL REFER TO THE CITY OF RAPID CITY STANDARD SPECIFICATIONS FOR PUBLIC WORKS CONSTRUCTION, 2007 EDITION FOR ADDITIONAL REQUIREMENTS.
2. ALL PLANTS SHALL BE INSTALLED PER THE CITY OF RAPID CITY STANDARD SPECIFICATIONS FOR PUBLIC WORKS CONSTRUCTION, 2007 EDITION.
3. CONTRACTOR SHALL TOPSOIL AND SEED ALL AREAS DISTURBED DURING CONSTRUCTION.

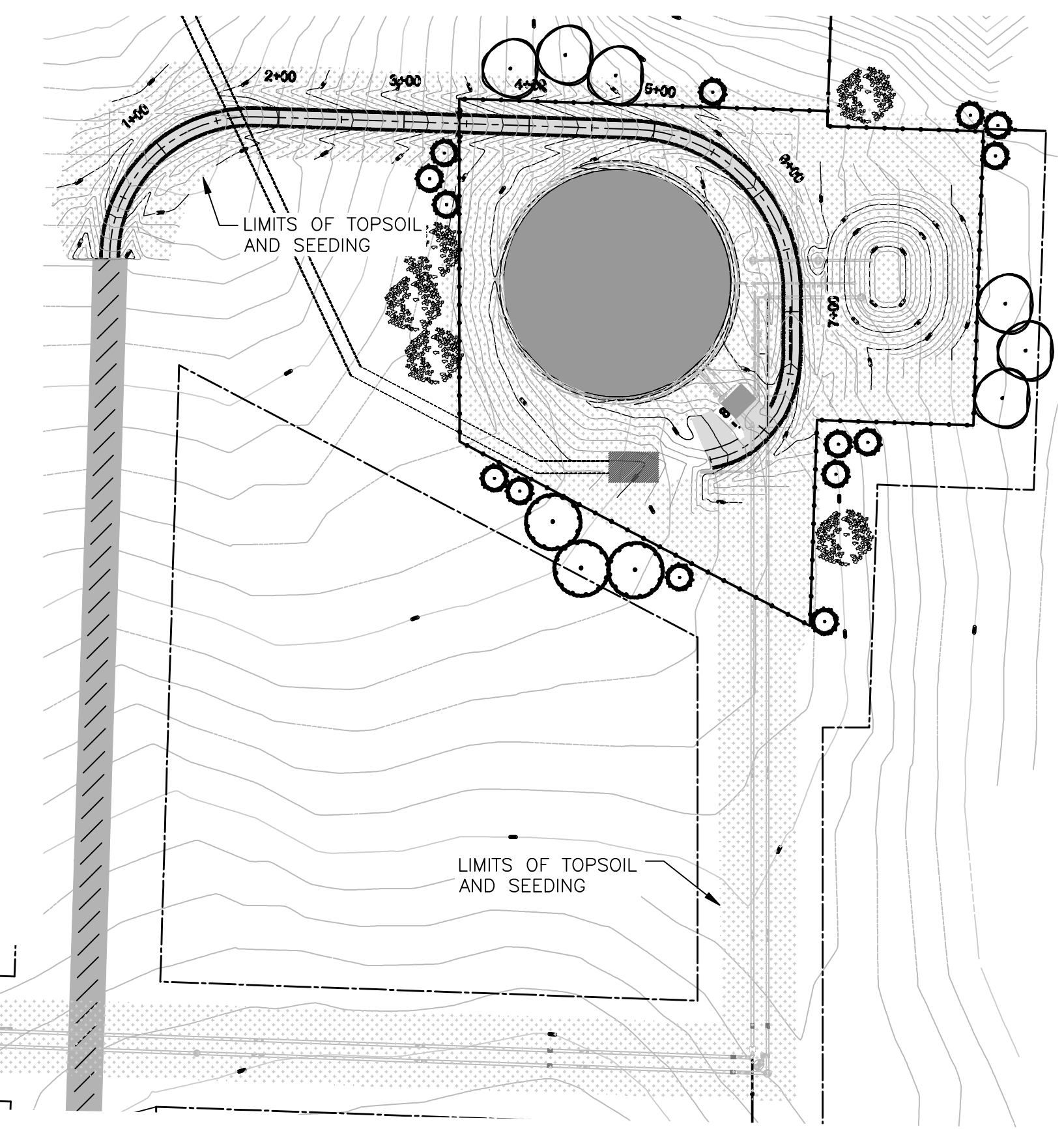
LEGEND	
---	EXISTING CONTOUR MINOR
- - -	EXISTING CONTOUR MAJOR
---	PROPOSED CONTOUR MINOR
- - -	PROPOSED CONTOUR MAJOR
+	TOPSOIL AND SEED

LANDSCAPE REQUIREMENTS	
ITEM	POINTS
TOTAL SITE AREA	128,380
BUILDING/ STRUCTURE AREA	25,447
REQUIRED POINTS	102,583



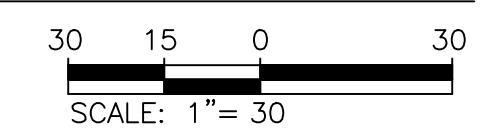
LANDSCAPE PROVIDED		
ITEM	AREA / PLANTS	POINTS
REQUIRED POINTS		102,583
GRASS (10 points per SF)	10,308 SF	103,080*
LARGE TREES (2000 points EACH)	14	28,000
MEDIUM TREES (1000 points EACH)	14	14,000
TOTAL POINTS		145,080

*Note: Landscaping Points do not take into consideration the seeding along the pipeline easements.



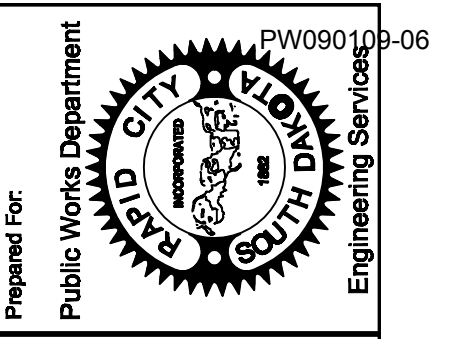
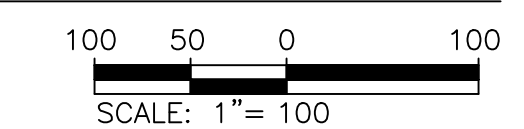
PLANTING PLAN

811 - ONE CALL
CALL BEFORE YOU DIG!



SEEDING AREA OVERVIEW MAP

LIMITS OF TOPSOIL AND SEEDING



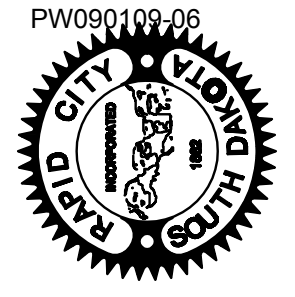
Prepared For:
CITY OF RAPID CITY
LANDSCAPE ARCHITECTURE
PARKS & RECREATION

Scale: AS SHOWN
Designed By: Grth Mngmnt
Design Date: Oct - 2008
Internal Job No:
Drawn By: RLL
Print Date:
Surveyed By: KLJ
Survey Date: 11/19/07
Revisions:

**ELK VALE
LOW LEVEL RESERVOIR**

Enhanced
LANDSCAPE PLAN

CITY OF RAPID CITY PROJECT NO. W07-1638



Prepared By:

Scale: 1" = 20'

Designed By: Drawn By:

Design Date: Print Date:

Internal Job No: W07-1638

Surveyed By: Survey Date:

Revisions:

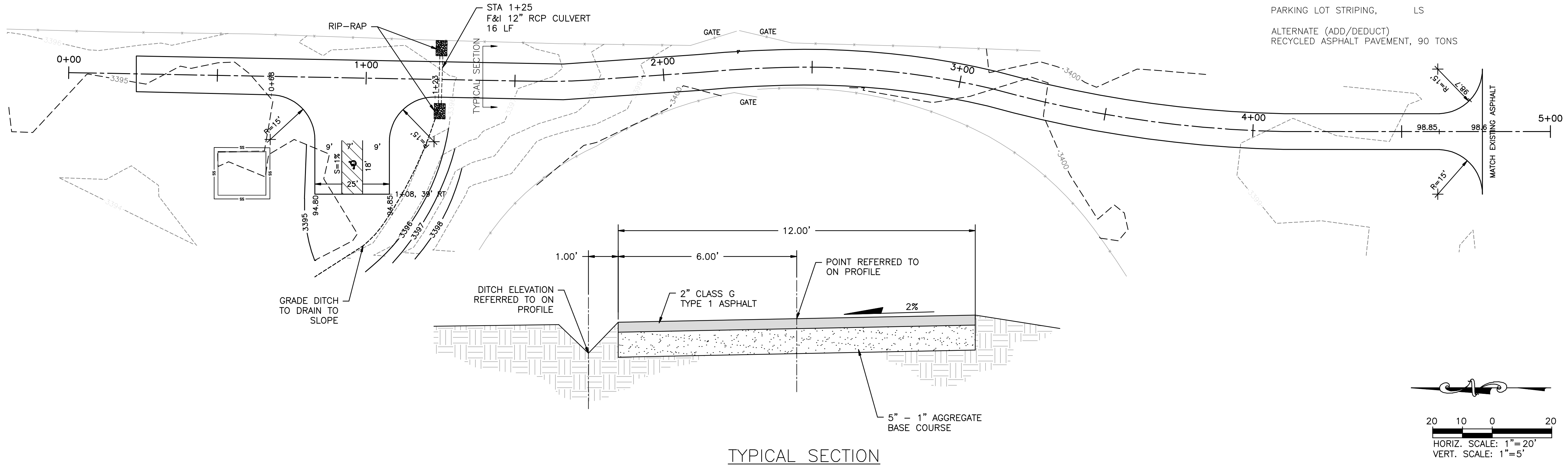
ELK VALE WATER RESERVOIR
ROAD PAVING

CITY OF RAPID CITY PROJECT NO. W07-1638

SIGNAL HILL
SITE
ROAD

QUANTITIES

UNCLASSIFIED EXCAVATION, (ALL WASTE) (IN CURRENT CONTRACT)	150 CY
12" RCP,	16 LF
AGGREGATE BASE COURSE, (IN CURRENT CONTRACT)	230 TONS
CLASS G, TYPE 1 ASPHALT,	90 TONS
PARKING LOT STRIPING,	LS
ALTERNATE (ADD/DEDUCT) RECYCLED ASPHALT PAVEMENT,	90 TONS



TYPICAL SECTION

