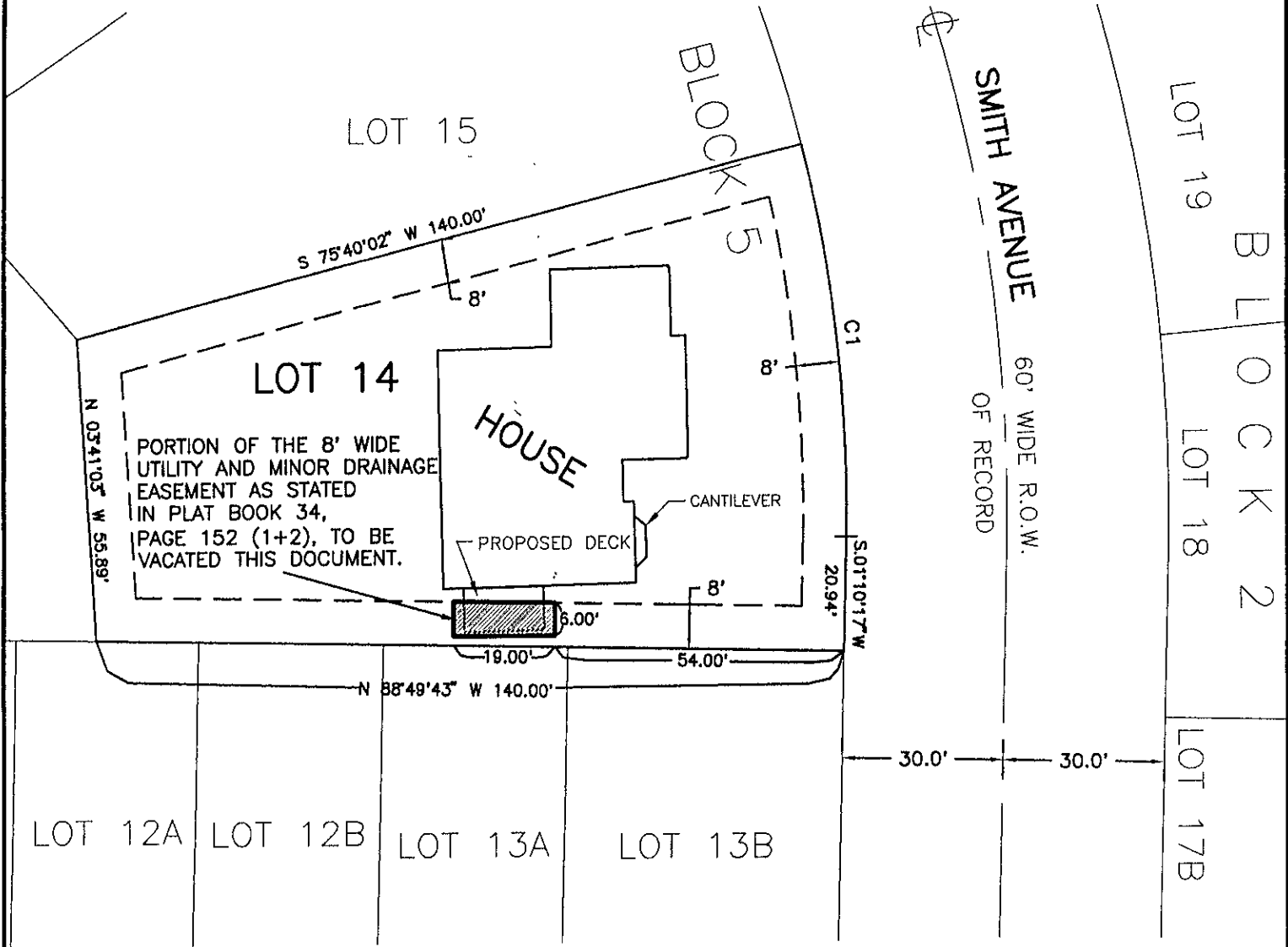


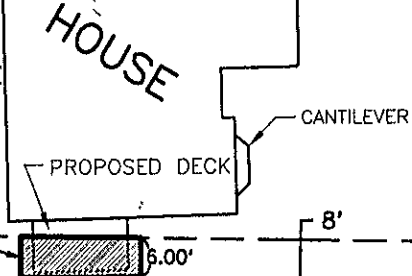
"EXHIBIT A"

VACATION OF A PORTION OF THE 8' WIDE UTILITY AND MINOR DRAINAGE EASEMENT,
 LOT 14 OF BLOCK 5, PARK MEADOWS SUBDIVISION

LOCATED IN THE SE1/4 OF THE NE1/4,
 SECTION 7, T1N, R8E, B.H.M.,
 RAPID CITY, PENNINGTON COUNTY, SOUTH DAKOTA



PORTION OF THE 8' WIDE UTILITY AND MINOR DRAINAGE EASEMENT AS STATED IN PLAT BOOK 34, PAGE 152 (1+2), TO BE VACATED THIS DOCUMENT.



CURVE	LENGTH	RADIUS	DELTA ANGLE	CHORD BEARING	CHORD DISTANCE
C1	73.06	270.00	15°30'15"	S 06°34'51" E	72.84

